



# 15 TORONTO STREET

 CUSHMAN & WAKEFIELD

 MADISON  
COMMERCIAL REAL ESTATE

# ELEVATE YOUR WORKSPACE AT 15 TORONTO

Located on Toronto Street - two blocks east of Yonge Street and one block north of King Street - sits 15 Toronto, a boutique gem nestled in the heart of Toronto's financial core. 15 Toronto offers the perfect blend of connectivity and convenience, catering to the urban professional. Moreover, its central location, places it amidst an array of amenities including the best restaurants, cafes, shops and hotels Toronto has to offer. Boasting a perfect transit and walk score, getting where you need to go is a breeze, whether you are walking or taking transit. With availabilities to suit all tenants and attractive deal terms, 15 Toronto marks the next chapter in your workplace journey.

---

**SUITE 400 | 2,948 SF**  
AVAILABLE IMMEDIATELY

---

**SUITE 500 | 1,922 SF**  
AVAILABLE JANUARY 1, 2025  
\*CAN BE MADE CONTIGUOUS WITH SUITE 501 FOR A TOTAL OF 3,871 SF

---

**SUITE 501 | 1,949 SF**  
AVAILABLE IMMEDIATELY  
\*CAN BE MADE CONTIGUOUS WITH SUITE 500 FOR A TOTAL OF 3,871 SF

---

**SUITE 1000 | 5,102 SF**  
AVAILABLE IMMEDIATELY

---

**ASKING RATE:** Contact Listing Agents  
**ADDITIONAL RENT:** \$25.27 (2024.est) Includes in-suite janitorial and hydro  
**COMMISSION:** \$2.00 psf/Annum



**11-STOREY**  
OFFICE BUILDING

**APPROX. 50,000 SF**  
OF RENTABLE  
OFFICE SPACE

**GROUND FLOOR**  
RETAIL TENANTS

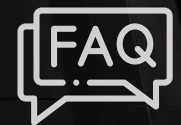
**5,000 SF**  
FLOOR PLATE

**BUILT OUT SUITES**  
AVAILABLE IMMEDIATELY

**RENOVATED LOBBY**  
& COMMON FACILITIES

**MADISON**  
GROUP

**SUPER**  
**BROKER**



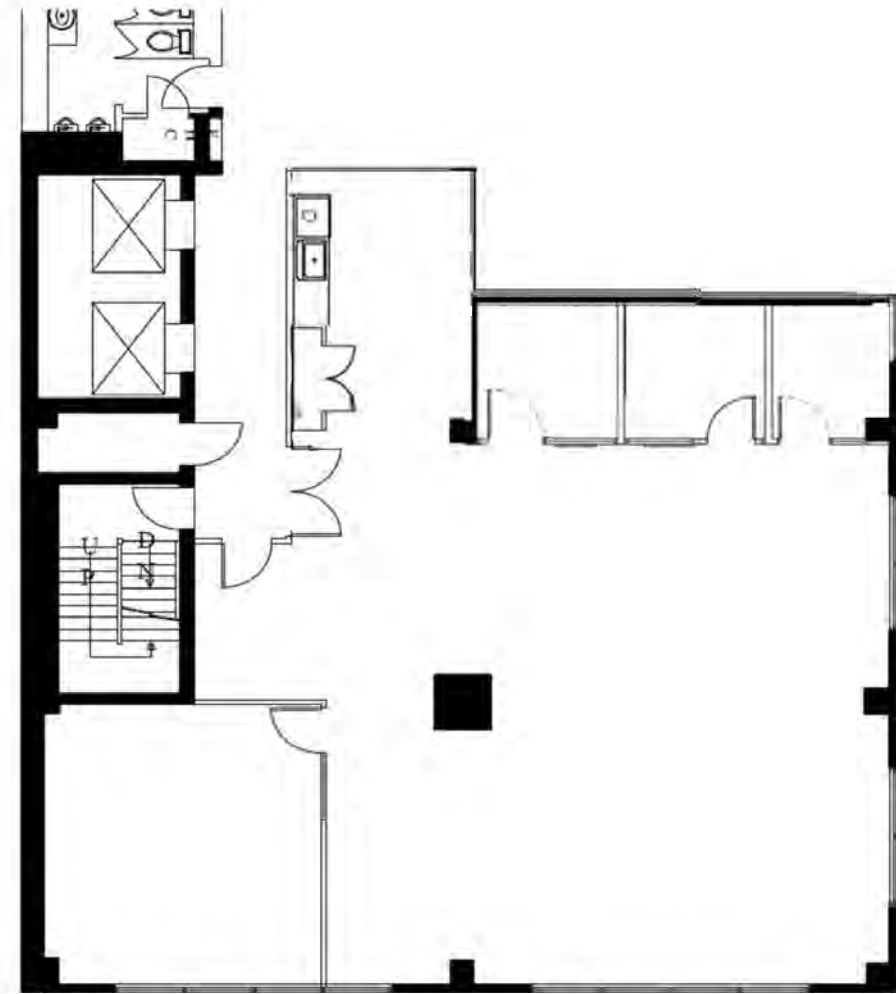
**CLICK HERE FOR**  
PROGRAM FAQ



**CLICK HERE FOR**  
PRIZE LIST

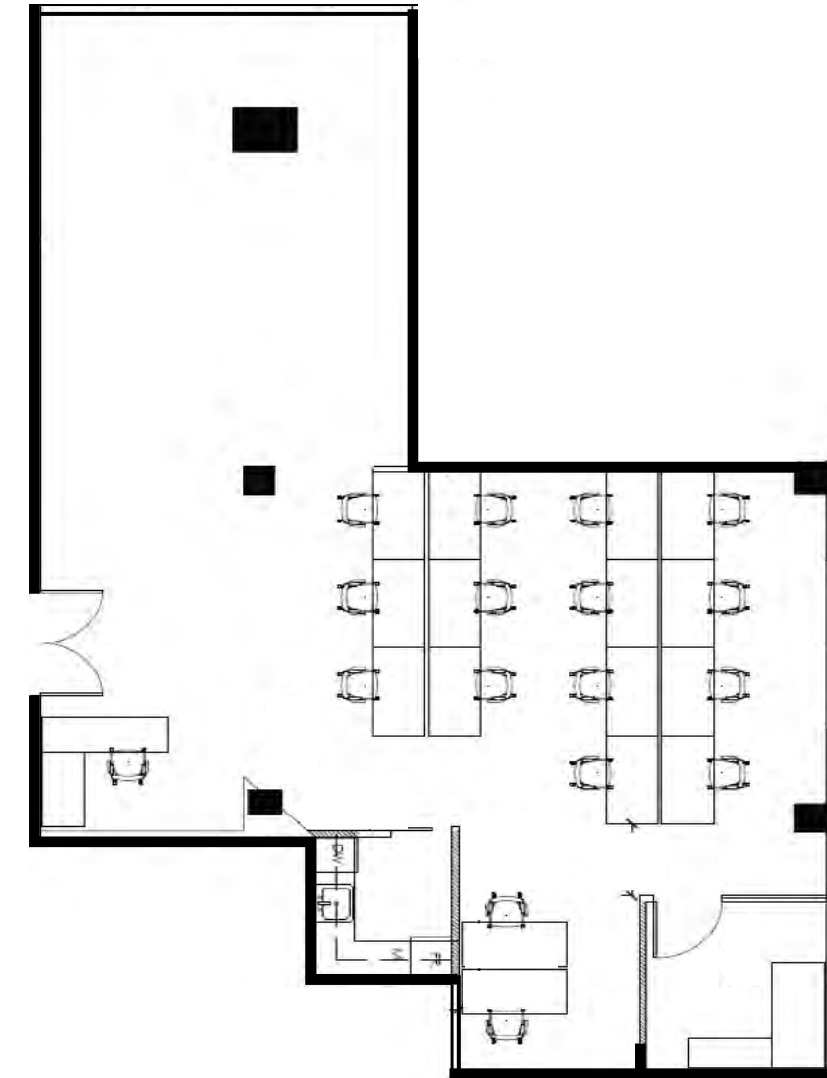
# SUITE 400 | 2,938 SF

[View pictures online](#)



<b>Asking Rate</b>	Contact Listing Agents
<b>Additional Rent</b>	\$25.27 (2024 est.) Includes in-suite janitorial and hydro
<b>Term</b>	Flexible (1-10 years)
<b>Availability</b>	Available Immediately
<b>Suite Description</b>	Freshly painted and carpeted unit built out with three offices, boardroom, open area, and kitchenette

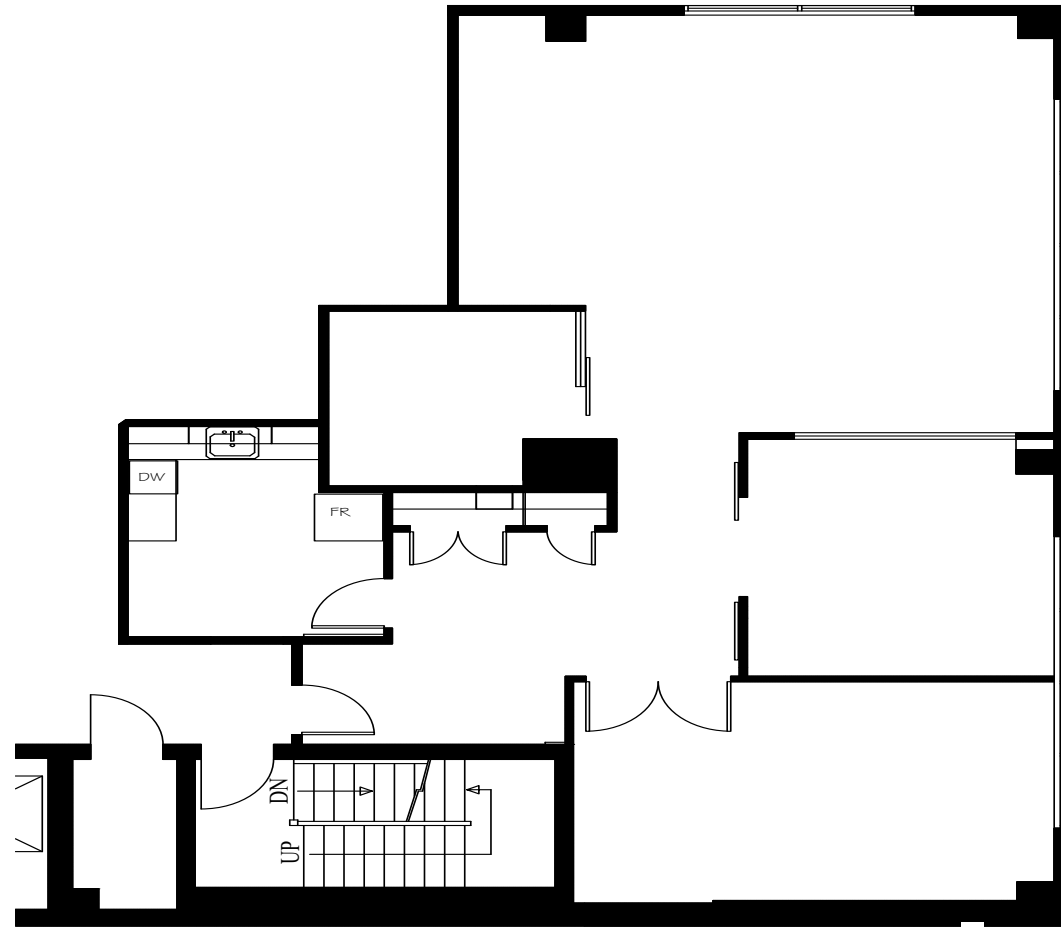
# SUITE 500 | 1,922 SF



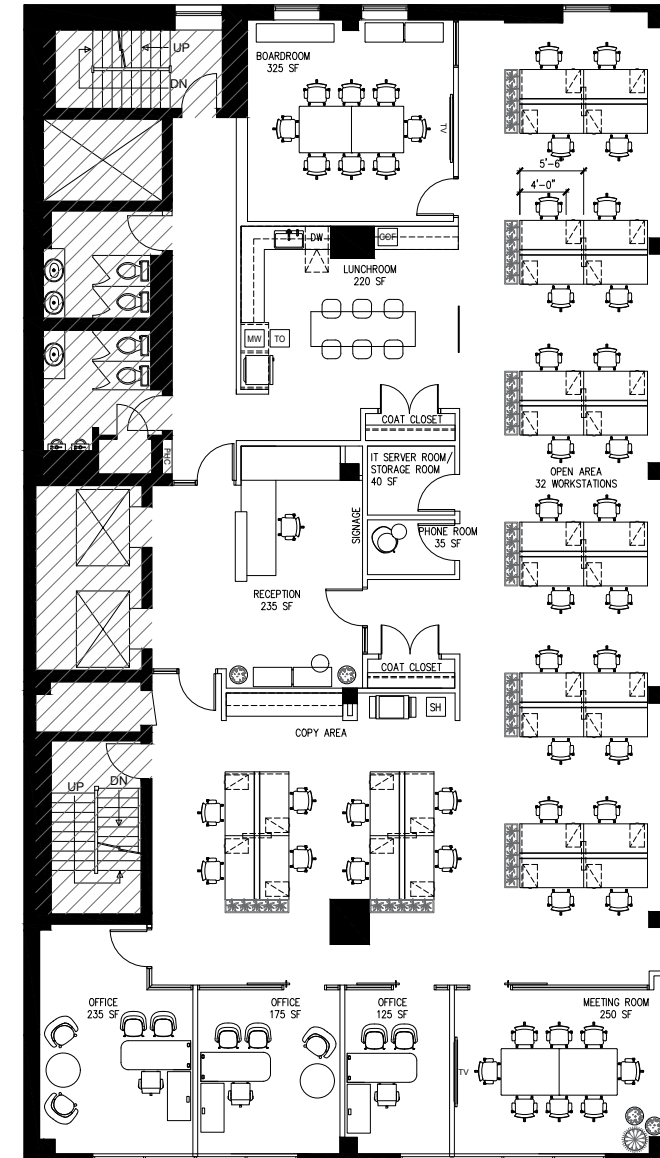
<b>Asking Rate</b>	Contact Listing Agents
<b>Additional Rent</b>	\$25.27 (2024 est.) Includes in-suite janitorial and hydro
<b>Term</b>	Flexible (1-10 years)
<b>Availability</b>	January 1, 2025
<b>Suite Description</b>	Built out with open area, 1 office, and kitchenette *Can be made contiguous with suite 501 for a total of 3,871 SF

# SUITE 501 | 1,949 SF

[View pictures online](#)



# SUITE 1000 | 5,102 SF



## Asking Rate

Contact Listing Agents

## Additional Rent

\$25.27 (2024 est.) Includes in-suite janitorial and hydro

## Term

Flexible (1-10 years)

## Availability

Immediately

## Suite Description

Built out with two offices, boardroom and open area

\*Can be made contiguous with suite 500 for a total of 3,871 SF

## Asking Rate

Contact Listing Agents

## Additional Rent

\$25.27 (2024 est.) Includes in-suite janitorial and hydro

## Term

Flexible (1-10 years)

## Availability

Immediately

## Suite Description

Full floor model suite built out with 3 offices, 1 meeting room, a boardroom, call room, lunchroom, reception, private in-suite washrooms, and space for 32 workstations

\*Suite does not come furnished

# CONCEPT PHOTOS FOR MODEL SUITE DESIGN









# EFFORTLESSLY CONNECTED FOR CONVENIENCE

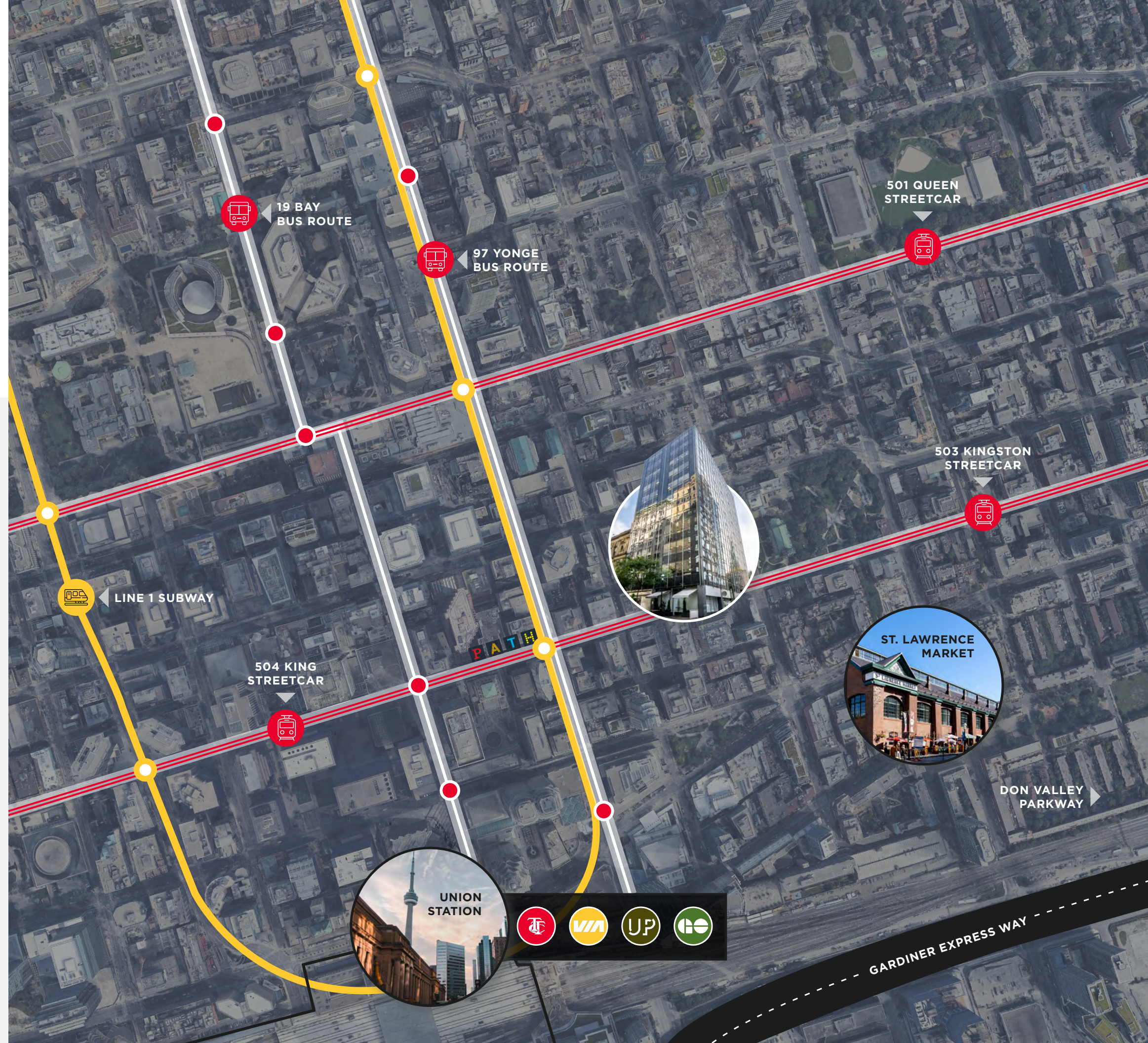
Steps to the PATH network, TTC subway and streetcar and minutes from both the Gardiner Expressway and DVP, get where you need to go quickly and easily from 15 Toronto.

 WALK SCORE **100**

 BIKE SCORE **100**

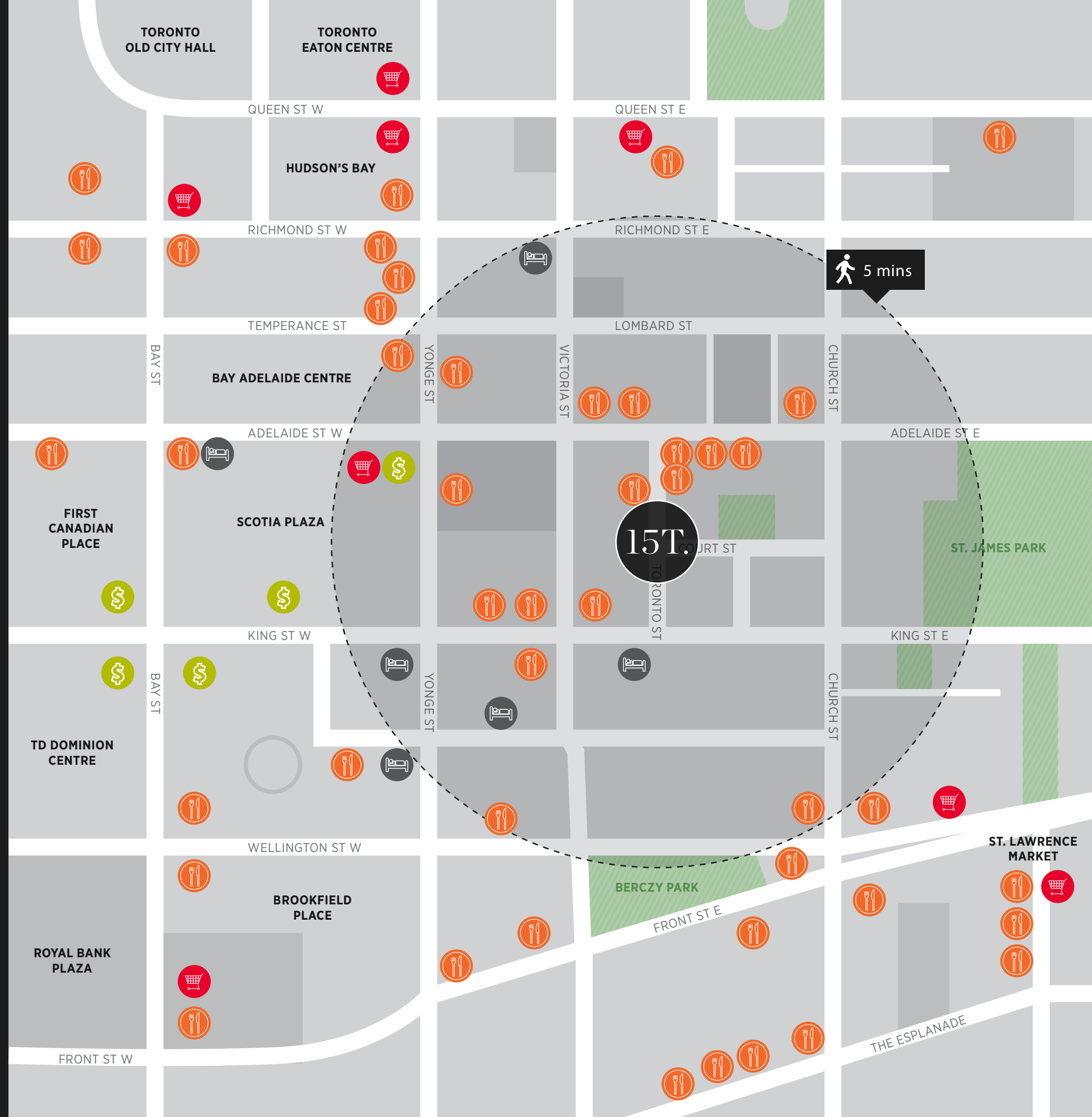
 TRANSIT SCORE **93**

-  → King Subway Station & 504 King Streetcar 2 mins
-  → PATH 3 mins
-  → St. Lawrence Market 8 mins
-  → Union Station 8 mins
-  → Don Valley Parkway 7 mins
-  → Gardiner Expressway 9 mins



# INFUSE EXCITEMENT INTO YOUR WORKDAY & BEYOND

15 Toronto is located at the centre of everything Toronto has to offer. Countless restaurants, cafes, bars, shops and entertainment options are at your fingertips - all within walking distance - making it easy to grab a coffee heading into the office, a bite to eat at lunch or a cocktail after work with friends.



**Mike Scace\***

**Vice Chair**

+1 416 359 2456

michael.scace@cushwake.com

**Alan Rawn\***

**Senior Vice President**

+1 416 359 2440

alan.rawn@cushwake.com

**Lauren Luchini\***

**Associate Vice President**

+1 416 359 2553

lauren.luchini@cushwake.com

**Brendan Shea\***

**Senior Associate**

+1 905 501 6426

brendan.shea@cushwake.com



\*Sales Representative

**Cushman & Wakefield ULC, Brokerage**

161 Bay Street, Suite 1500

Toronto, ON M5J 2S1

©2024 Cushman & Wakefield ULC, Brokerage. All rights reserved. The information contained in this communication is strictly confidential. This information has been obtained from sources believed to be reliable but has not been verified. NO WARRANTY OR REPRESENTATION, EXPRESS OR IMPLIED, IS MADE AS TO THE CONDITION OF THE PROPERTY (OR PROPERTIES) REFERENCED HEREIN OR AS TO THE ACCURACY OR COMPLETENESS OF THE INFORMATION CONTAINED HEREIN, AND SAME IS SUBMITTED SUBJECT TO ERRORS, OMISSIONS, CHANGE OF PRICE, RENTAL OR OTHER CONDITIONS, WITHDRAWAL WITHOUT NOTICE, AND TO ANY SPECIAL LISTING CONDITIONS IMPOSED BY THE PROPERTY OWNER(S). ANY PROJECTIONS, OPINIONS OR ESTIMATES ARE SUBJECT TO UNCERTAINTY AND DO NOT SIGNIFY CURRENT OR FUTURE PROPERTY PERFORMANCE. \*Sales Representative \*\*Broker