



CENTENE PLAZA C

+/- 39,080 SF

Available in the Heart of Downtown Clayton

A WORLD CLASS EXPERIENCE

Unmatched Amenities

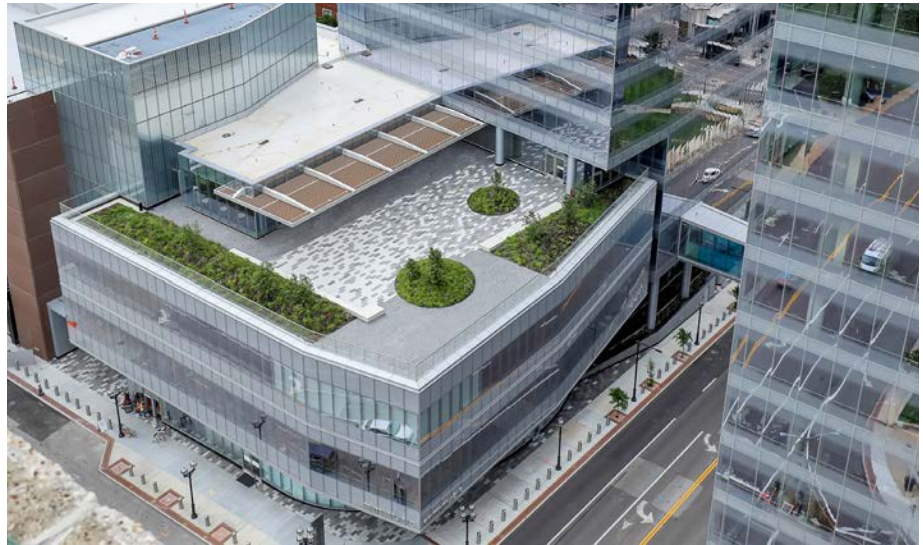
From terrace dining to world-class facilities, wellness and cuisine, the LEED certified Centene Plaza C puts everything your workforce needs within convenient reach.





Superior Design

Designed with innovation in mind, Centene Plaza C is the seamless fusion of the most cutting-edge architectural achievements in sustainability, technology, and engineering.



Premier Location

Ideally located in the heart of vibrant downtown Clayton, Centene Plaza C offers unparalleled access to St. Louis' top chefs, hotels, businesses, and neighborhoods.





RHINO PERK
COFFEE FOR GOOD





redefining workplace environment

Up to +/- 20,000 Contiguous SF Available (2nd floor)

Up to 19,080 SF (5th floor) Now Available

32,000 SF State-of-the-Art Café

Outdoor Terrace Dining

4 X 1000 Attached Covered Tenant & Visitor Parking

24/7/365 Security

Car Wash Services

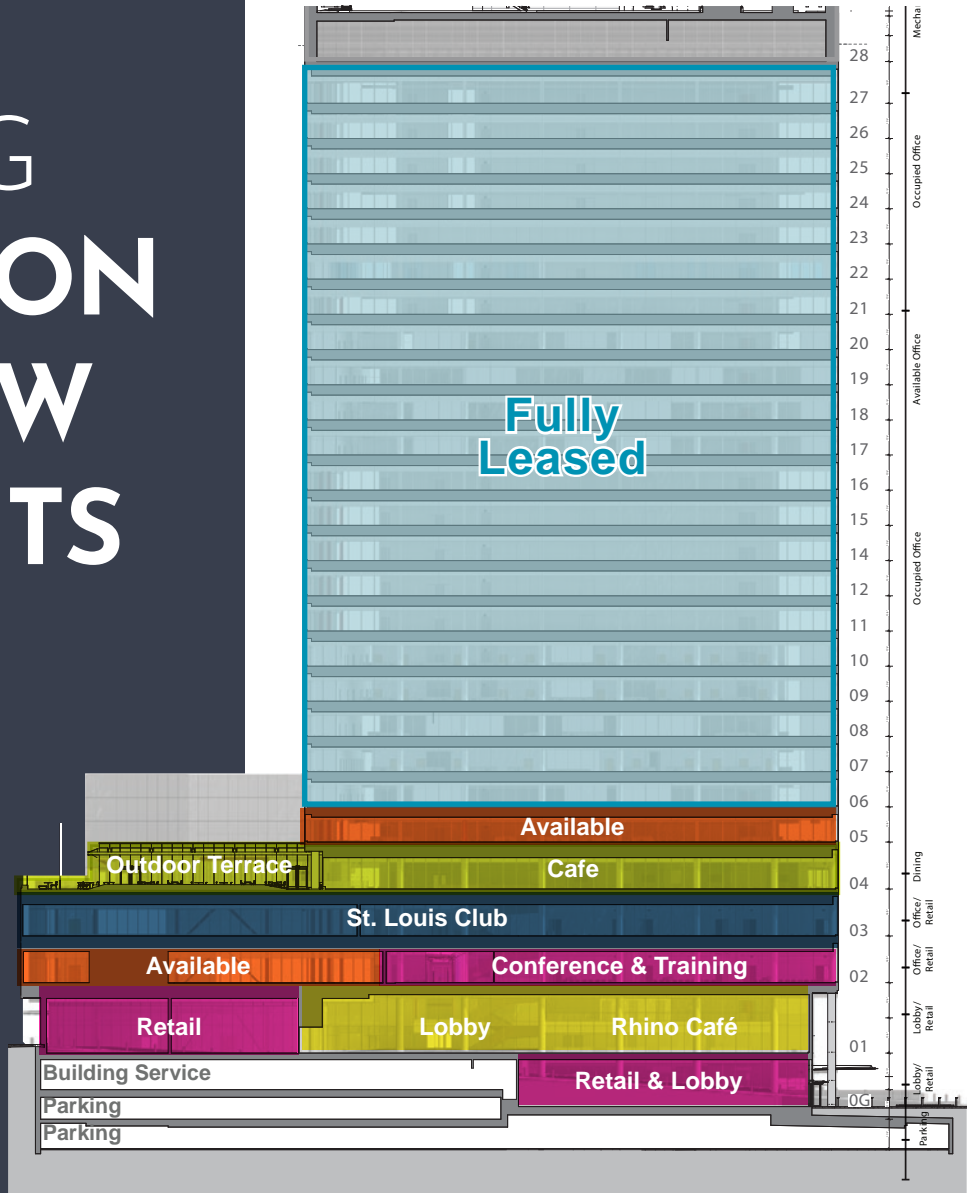
Energy Efficient LEED Design

Rhino Café (Full Barista Service)

Conference & Training Facilities

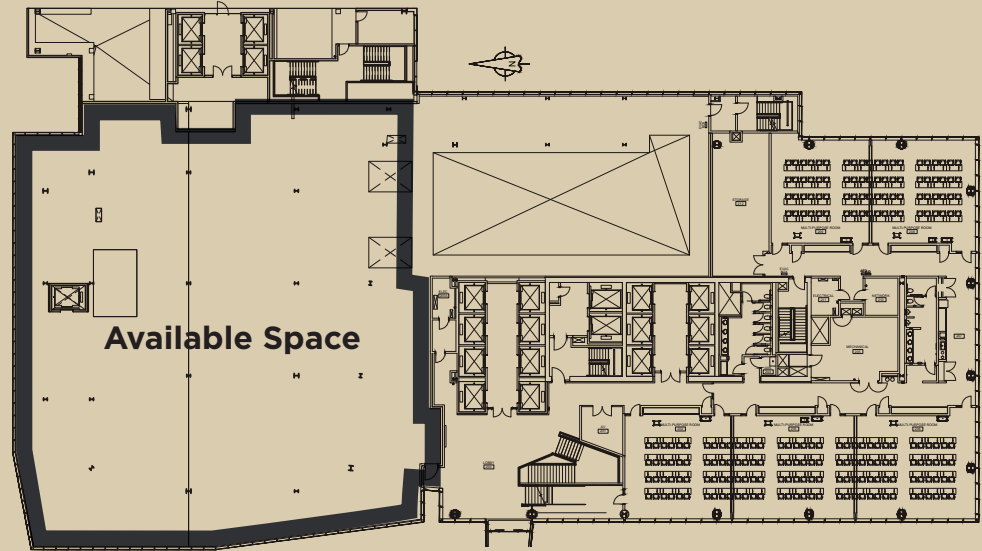
ASKING RATE: \$45.00/SF

TAKING CLAYTON TO NEW HEIGHTS

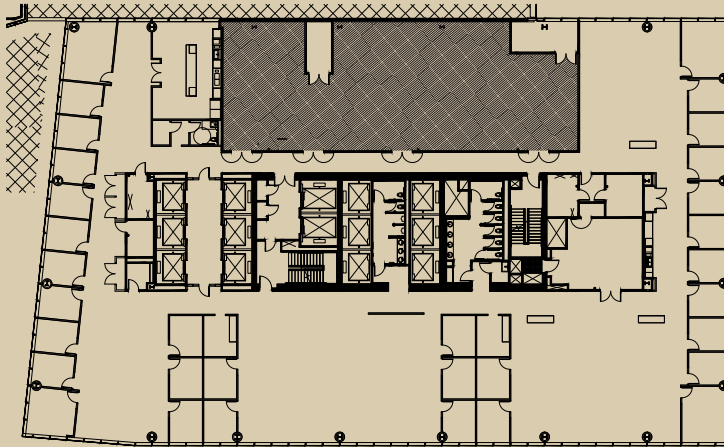


2ND FLOOR

+/- 20,000 SF



Forsyth Boulevard



Carondelet Plaza

5TH FLOOR

+/- 19,080 SF

EXCEPTIONAL RETAIL EXPERIENCE

Centene Plaza Campus features a pedestrian-friendly business district with open, public green spaces. Retail shops and innovative architecture and artwork create a unique setting in the heart of Clayton.





Nearby Retail



discover what it's like at the center of it all



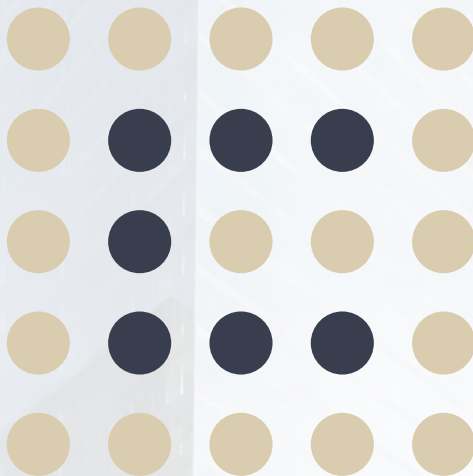


32 nearby
restaurants

6 nearby exercise
facilities & gyms

15 minutes to
airport

4 hotels in
walking distance



Jim Mosby
Vice Chair
314 746 0316
jim.mosby@cushwake.com

Danielle Grubbs
Senior Director
314 925 3175
danielle.grubbs@cushwake.com

Paddy Mullen
Senior Director
314 925 3178
paddy.mullen@cushwake.com



7700 Forsyth Blvd., Suite 1210
St. Louis, MO 63105
314 862 7100
cushmanwakefield.com