

# 19,500 SF

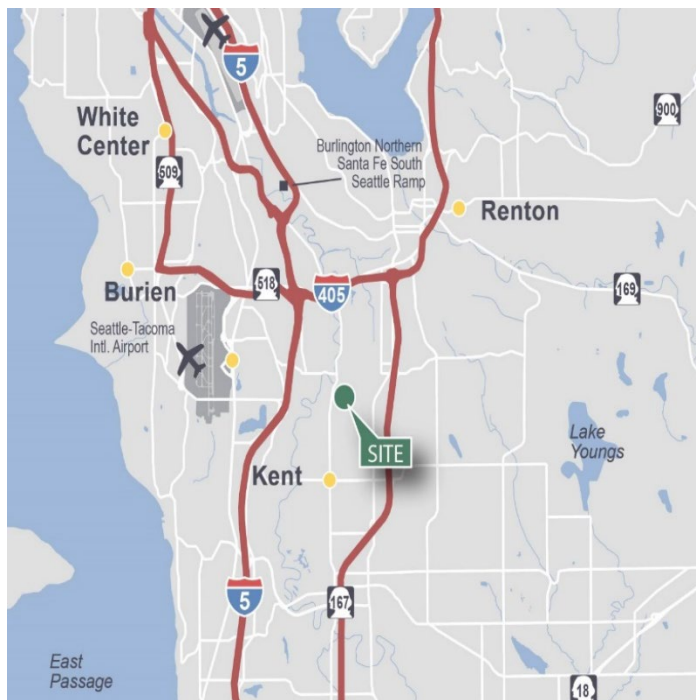
Industrial Space For Lease



## Prologis Park Kent 49



6858 S 190<sup>th</sup> St  
Kent, WA 98032 USA



### LOCATION

- Centrally Located in Kent
- Strong Corporate Image
- Easy Access to I-5 and SR-167

### FACILITY

- 19,500 SF Shell
- 2,724 SF Office
- 2 Dock High Doors with Levelers
- 2 Rail Doors
- 22' x 49'6" Typical Column Spacing
- 24' Clear Height
- Available 2/1/2025
- Can be Combined with Suite Next Door for 48,750 SF Total

### ADVANTAGES AND AMENITIES

- Access to the Prologis Essentials platform, which includes:
  - [Operations Essentials](#)
  - [Energy Essentials](#)
  - [Workforce Essentials](#)
  - [Mobility Essentials](#)
  - [Digital Essentials](#)

**Your single-source service for efficient move-in and operations: [prologisessentials.com](https://www.prologisessentials.com)**

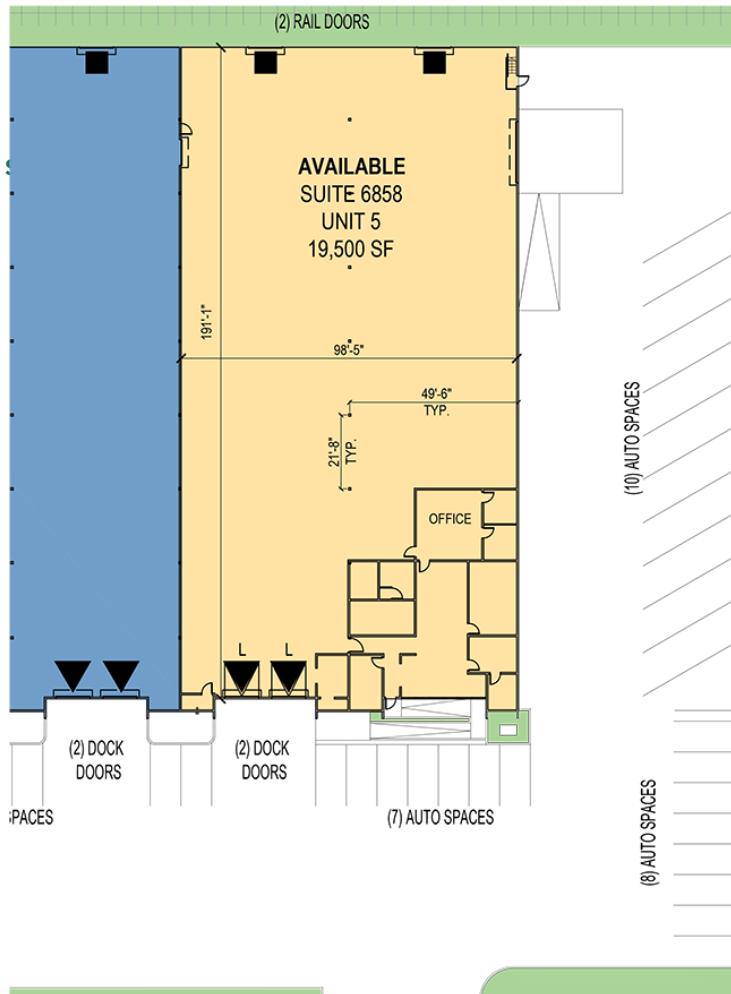
# 19,500 SF

## Industrial Space For Lease

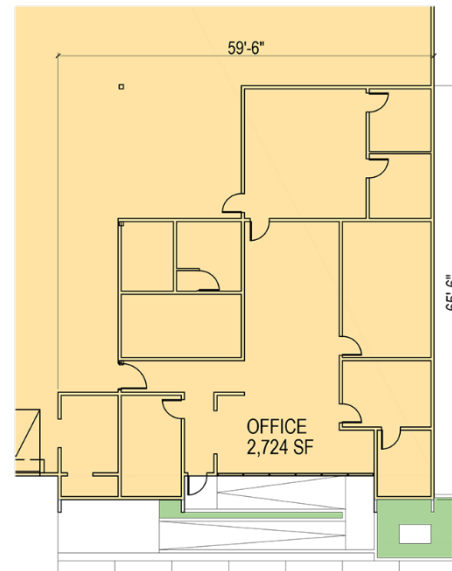


# Prologis Park Kent 49

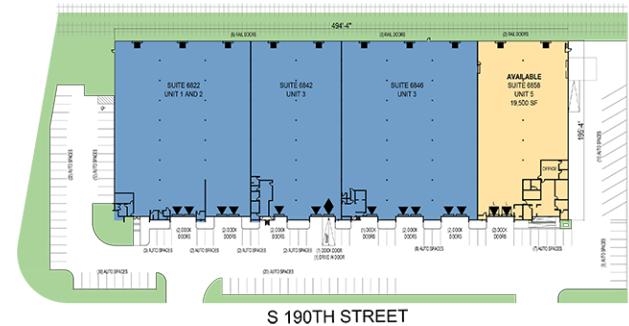
### FLOOR PLAN



### OFFICE PLAN



### SITE PLAN



### Cushman & Wakefield

Patrick Mullin  
patrick.mullin@cushwake.com  
ph +1 206 521 0265  
cell +1 206 518 8117  
601 Union Street  
Suite 1100  
Seattle, WA 98101 USA

### Cushman & Wakefield

Scott Alan, SIOR  
scott.alan@cushwake.com  
ph +1 206 521 0236  
cell +1 206 605 2396  
601 Union Street  
Suite 1100  
Seattle, WA 98101 USA

### Prologis

Lucca Merlino  
lmerlino@prologis.com  
ph +1 206 414 7621  
cell +1 206 498 6511  
33930 Weyerhaeuser Way S  
Suite 100  
Federal Way, WA 98001 USA