

101 JFK BLVD

SHORT HILLS, NEW JERSEY



*The Collection at
Short Hills*

Class A Building

Available for Sublease | 3,161 & 17,189 RSF

101 JFK Parkway is located in Short Hills, NJ. The property features a recently renovated lobby with high-end wood, glass, granite finishes, and media screens. Amenities at the property include a full-service cafe, a state-of-the-art conference center, a new fitness center with locker and shower accommodations. The property is within close proximity to the Summit Train Station, offering an easy commute to Manhattan via the Midtown Direct train line.

**PREMISES Up
to 20,350 SF**



**AVAILABILITY
60 - 90 Days**



**TERM
Thru July 31, 2031**



**ASKING RENT
Upon Request**



BUILDING HIGHLIGHTS & FEATURES

PROPERTY FEATURES

- 197,196 SF Building
- Built 1980 Renovated 2003
- 6 Stories
- 3,161 & 17,189 RSF available
- 250 Covered Parking
- On-Site Property Manager
- 24/7 On-Site Security

ACCESS

- Located in the business area of Short Hills
- 10 minutes from Millburn-Short Hills train station
- Easy access to Route 78 and Garden State Parkway
- Newark Airport: 20-minute drive

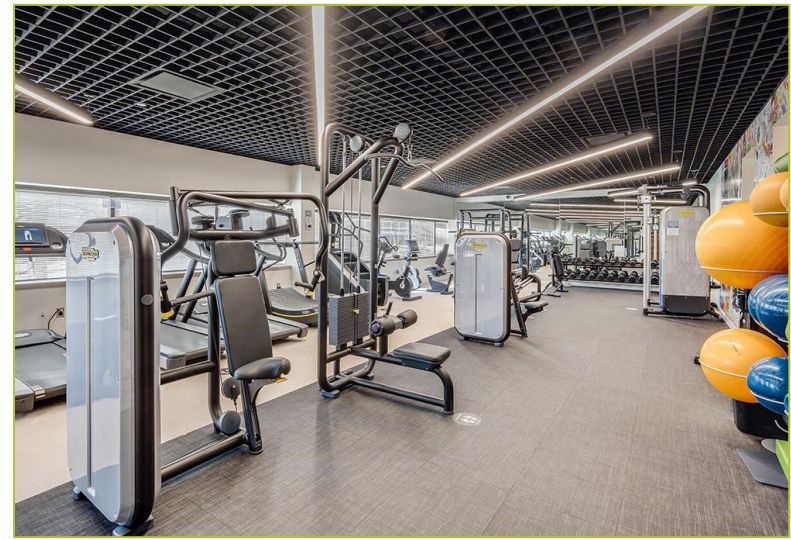
AMENITIES

- Full-service café
- Full-service fitness center
- Conference Center
- Nearby Short Hills Mall
- 24-hour access

AVAILABILITY	FLOOR	SIZE
Total Available	1st Floor	17,189 SF
	3rd Floor	3,161 RSF

Lease Rate

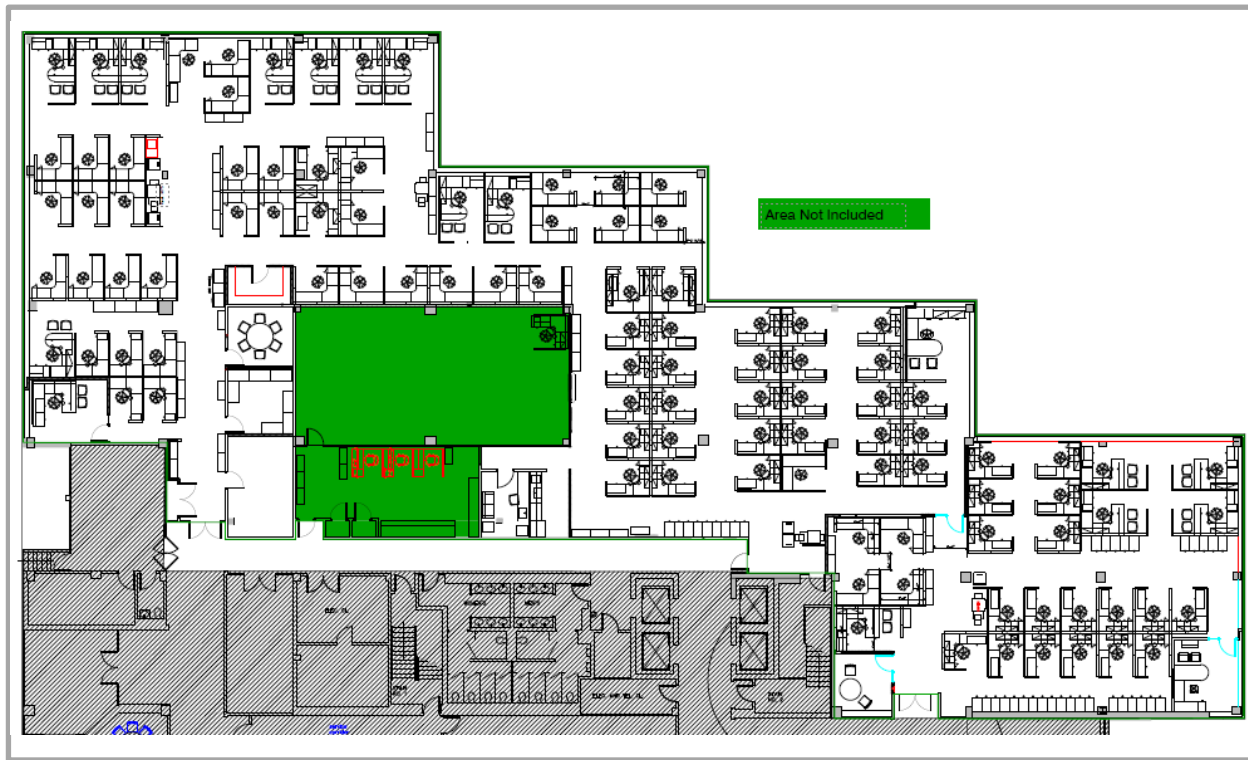
Call for More Information



BUILDING AVAILABILITY

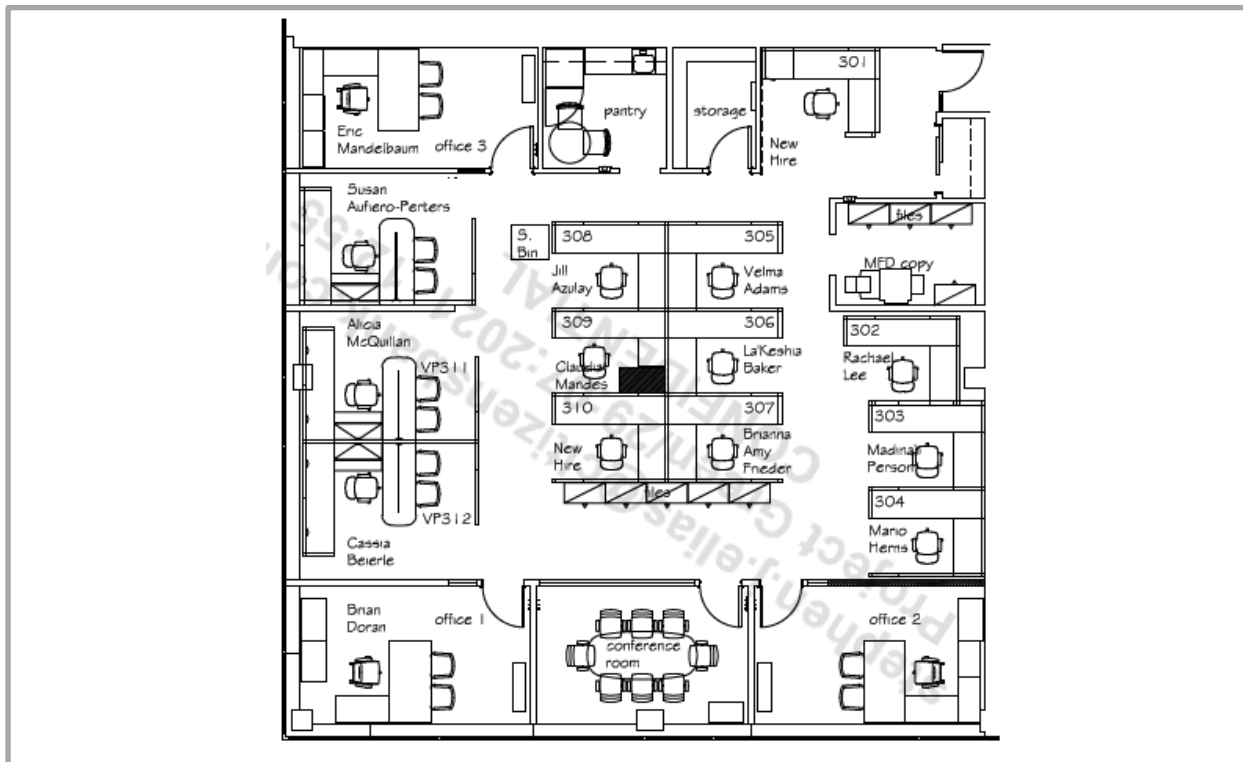
1st FLOOR

17,189 SF



3RD FLOOR

3,161 RSF



SPACE PHOTOS



LOCATION



101 JFK Blvd is in close proximity to Downtown Morristown, Madison and Summit and within close proximity to affluent neighborhoods, The Collection at Short Hills is just minutes to Route 24, I-78, GSP & NJ Turnpike, and 15 minutes to Newark Liberty International Airport and offers an easy commute to Manhattan via the Midtown Direct train line.

For more information, please contact:

WILLIAM O'KEEFE

Managing Director
+1 973 908 6101

william.okeefe@cushwake.com

RAYMOND P. TREVISAN, CRE

Executive Managing Director
+1 973 214 4893

raymond.trevisan@cushwake.com

