

FOR LEASE

161 DYCKMAN STREET
INWOOD, NY 10040



Great Location Near Public Transportation



Property Highlights

- All glass store front
- Situated between Chase Bank and Burger King / Popeyes
- Located between the **A** and **1** Dyckman Street Subway Station
- **M100** Bus stop steps from storefront

Neighboring Tenants

- Chase Bank
- Duane Reade
- CVS
- MedRite Urgent Care
- Planet Fitness
- Burger King
- Footlocker
- Sneaker Lounge
- European Wax Center
- Subway
- Popeyes
- Footlocker Kids
- Taco Bell
- GNC
- Starbucks

For further information, please contact:

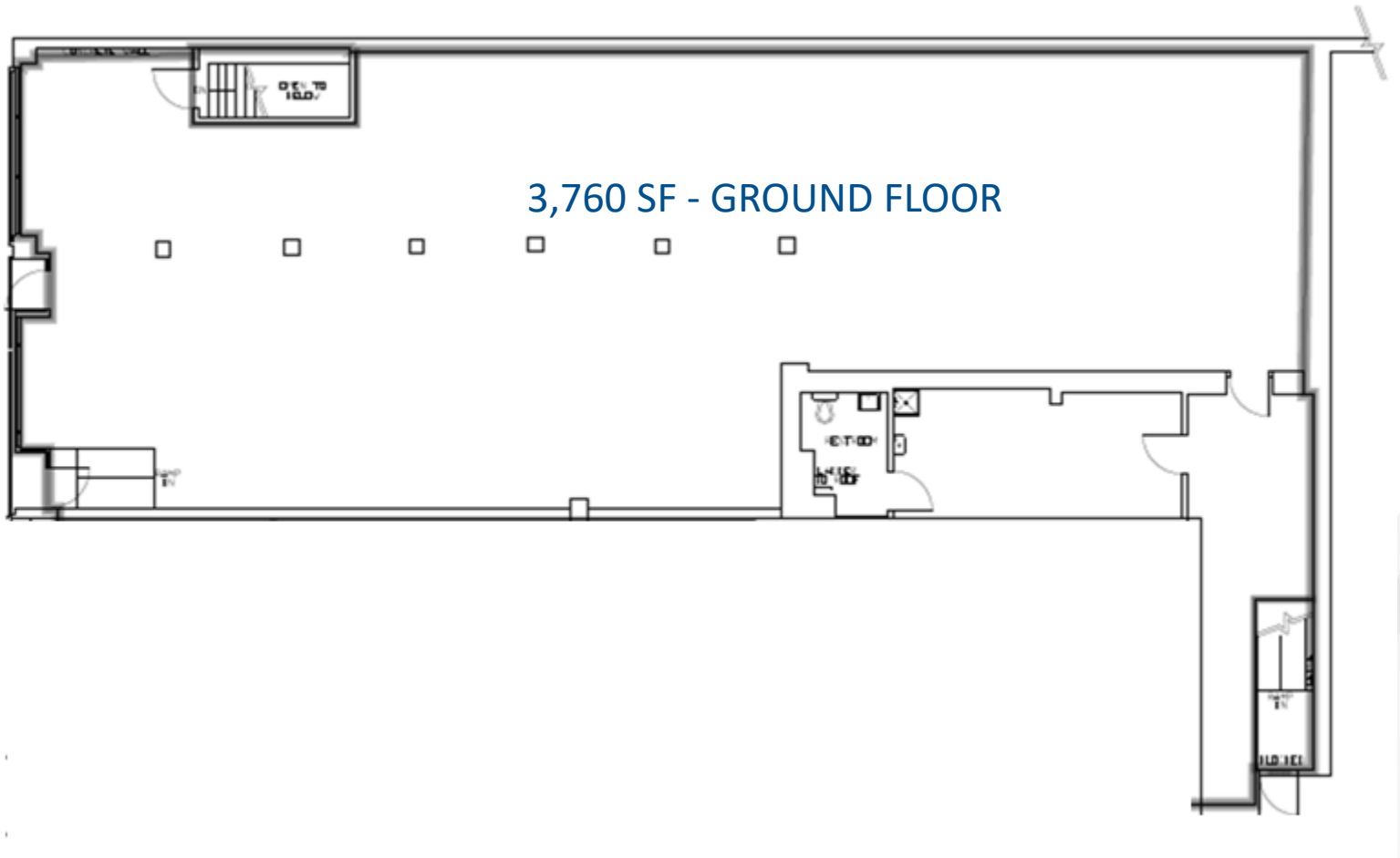
CARL WUNDERLICH
+1 203 326 5894
carl.wunderlich@cushwake.com

Building Features

Size:	3,760 SF – Ground Floor 6,270 SF – Basement
Rent:	Upon Request
Possession:	Immediate
Frontage:	42 Feet

Cushman & Wakefield of Connecticut, Inc.
107 Elm Street, 8th Floor
Four Stamford Plaza
Stamford, CT 06902
cushmanwakefield.com

1st FLOOR

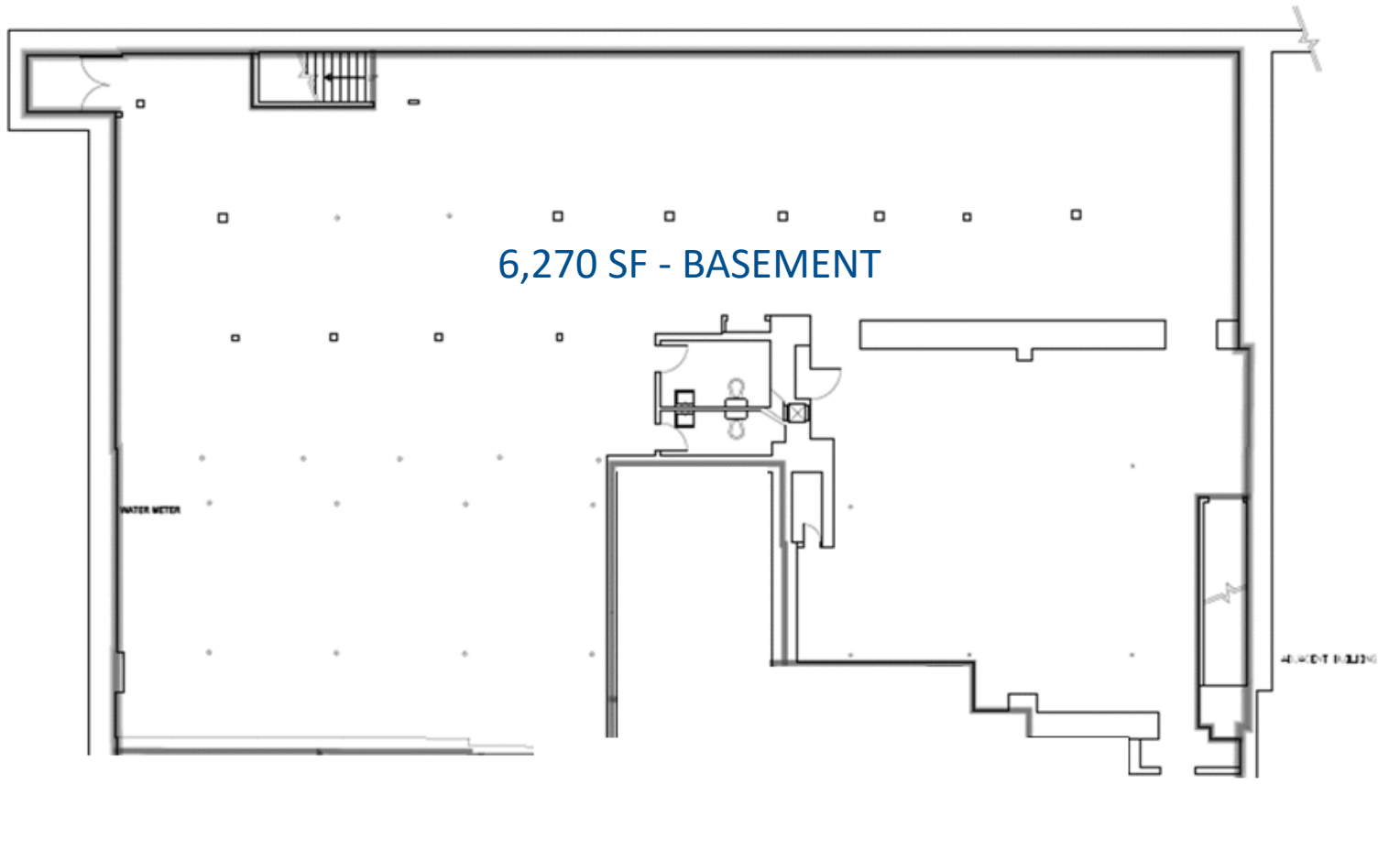


For further information, please contact:

CARL WUNDERLICH
+1 203 326 5894
carl.wunderlich@cushwake.com

Cushman & Wakefield of Connecticut, Inc.
107 Elm Street, 8th Floor
Four Stamford Plaza
Stamford, CT 06902
cushmanwakefield.com

BASEMENT



For further information, please contact:

CARL WUNDERLICH
+1 203 326 5894
carl.wunderlich@cushwake.com

Cushman & Wakefield of Connecticut, Inc.
107 Elm Street, 8th Floor
Four Stamford Plaza
Stamford, CT 06902
cushmanwakefield.com