

311,608 SF

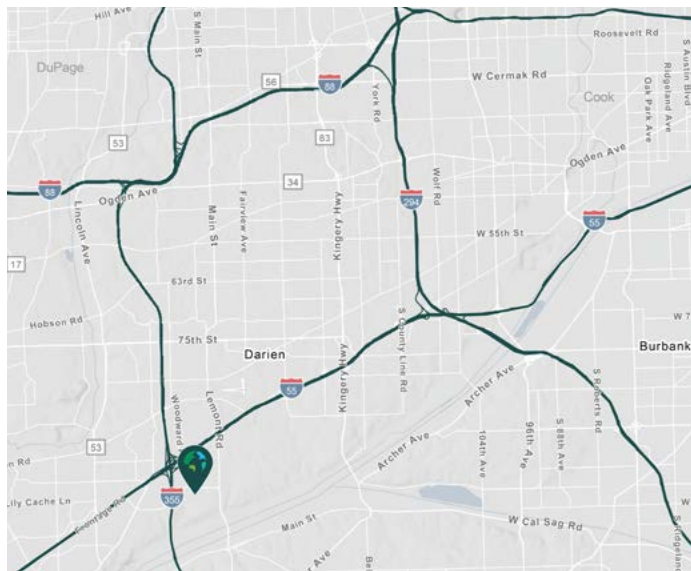
Industrial Space For Lease



Prologis Woodridge



1433 Internationale Parkway
Woodridge, IL 60517 USA



LOCATION

- Located in prestigious Internationale Centre Business Park
- Easy access to I-55 & I-355

FACILITY

- 311,608 sf available
- 35,887 sf of office
- 33,658 sf of mezzanine office
- 3,136 sf of warehouse office
- 31' clear height
- 20 dock doors, 2 drive-in-doors
- 425 car stalls
- LED lighting in the warehouse
- ESFR sprinkler system
- 53' x 50' typical column spacing with 49'8" speed bays

ADVANTAGES AND AMENITIES

- Low DuPage County taxes
- Centrally located with efficient access to metropolitan Chicago, Wisconsin and Indiana

Prologis Essentials: your single-source service for efficient move-in and operations at prologisessentials.com

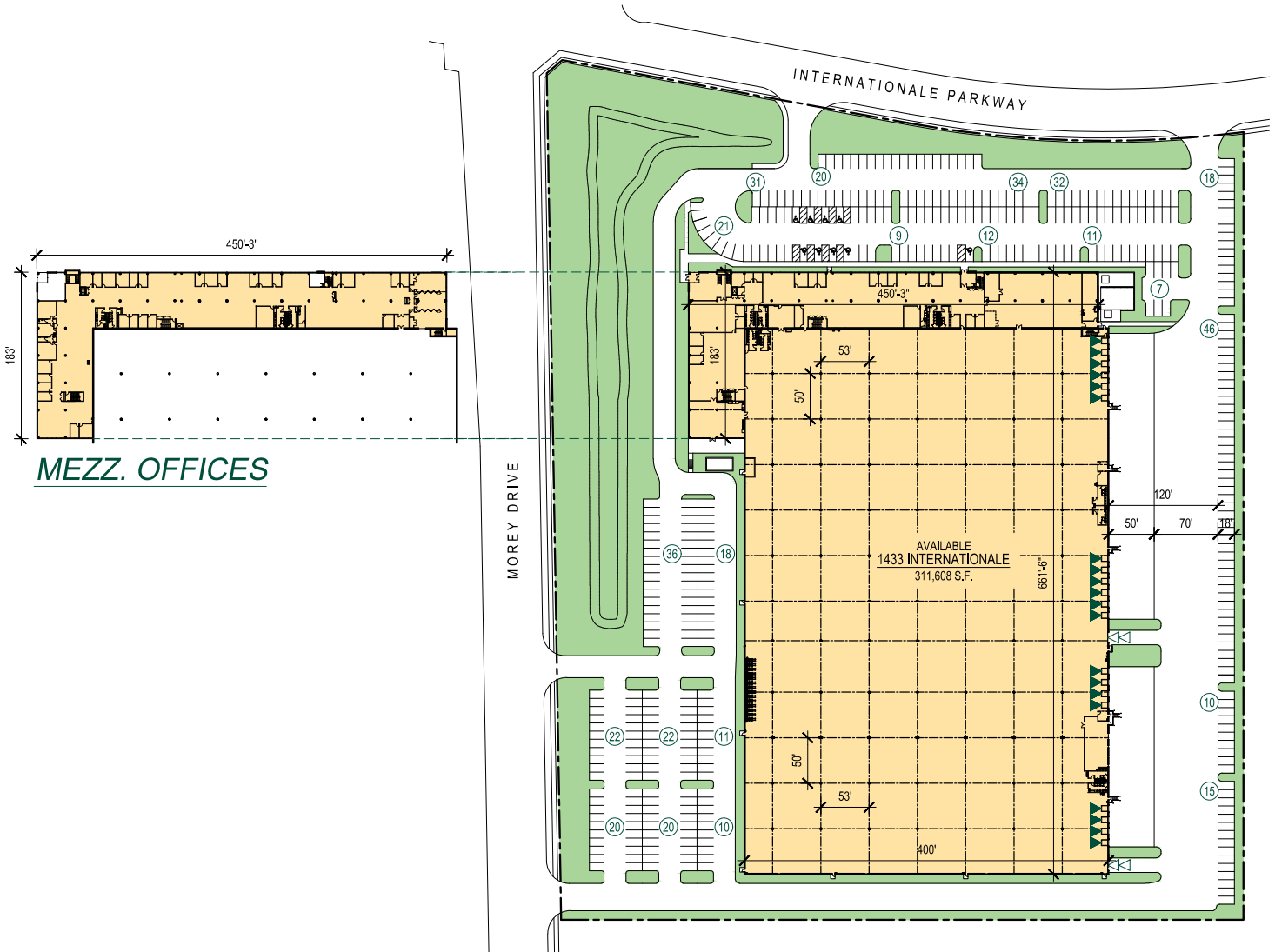
www.prologis.com

311,608 SF

Industrial Space For Lease



Prologis Woodridge



Cushman & Wakefield

Jason West, SIOR
jason.west@cushwake.com
ph +1 847 518 3210
cell +1 630 363 4395
9500 W. Bryn Mawr
Suite 600
Rosemont, IL 60018 USA

Cushman & Wakefield

Sean Henrick, SIOR, CCIM
sean.henrick@cushwake.com
ph +1 847 518 3215
cell +1 847 571 2080
9500 W. Bryn Mawr
Suite 600
Rosemont, IL 60018 USA

Cushman & Wakefield

Ryan Klink
ryan.klink@cushwake.com
ph +1 847 518 3211
cell +1 815 997 2144
9500 W. Bryn Mawr
Suite 600
Rosemont, IL 60018 USA

Prologis

Trevor Jeske
tjeske@prologis.com
ph +1 847 292 3866
cell +1 248 212 9014
6250 N. River Road
Suite 1100
Rosemont, IL 60018 USA

Prologis Essentials: your single-source service for efficient move-in and operations at prologisessentials.com

No warranty or representation, expressed or implied, is made as to the accuracy of the information contained herein, and same is submitted subject to error and omissions.