



**CUSHMAN &
WAKEFIELD**
Atlantic



FOR LEASE

**50 DRISCOLL CRESCENT
MONCTON, NB**

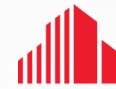
+/- 593 SF

**SECOND FLOOR
PROFESSIONAL OFFICE
SUITE**

77 Vaughan Harvey Blvd
Suite 402
Moncton, NB
Main +1 506 387 6925
cwatlantic.com

FOR LEASE

50 Driscoll Crescent
Moncton, New Brunswick



CUSHMAN &
WAKEFIELD
Atlantic



2ND FLOOR PROFESSIONAL OFFICE SUITE

Property Highlights

Ideal opportunity for office tenant in central location in the Moncton Industrial Park.

- 2 storey professional office building
- Natural light throughout
- Excellent street frontage
- Site visibility
- Pylon sign signage options
- Ample on-site parking
- Easy access to nearby bus route
- Heat/power is included; tenant is responsible for suite cleaning

Contact

DONNA GREEN
Vice President
+1 506 387 6930
dgreen@cwatlantic.com





Location Information

50 Driscoll is a two storey professional building in the heart of the Moncton Industrial Park with convenient access to major arteries throughout the city and nearby all amenities. The central location is ideal for many business uses including professional office, service commercial, and many other businesses.



Located in the
Moncton
Industrial Park



5km to
Downtown
Moncton



Turnkey Spaces



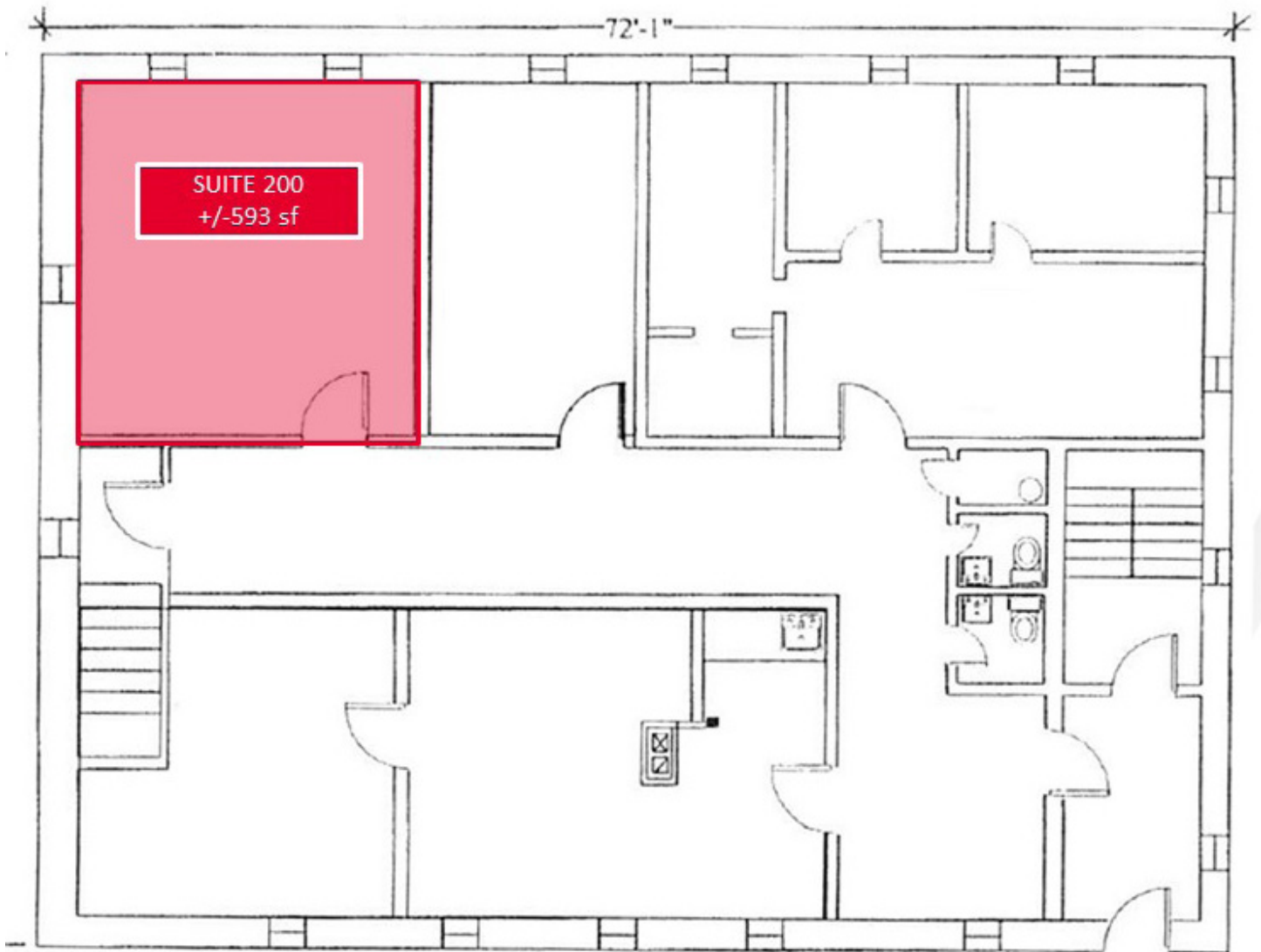
Ample onsite
parking



Easy access to
major roads

Contact

DONNA GREEN
Vice President
+1 506 387 6930
dgreen@cwatlantic.com



Contact

DONNA GREEN
Vice President
+1 506 387 6930
dgreen@cwatlantic.com

FOR LEASE
50 Driscoll Crescent | Moncton, NB



Available Suite

SECOND FLOOR

Suite 200 | +/- 593 sf | \$925 Monthly*

2nd floor corner suite featuring an open concept area, one private office, and small meeting room.

*Net lease structure. Additional rent subject to annual adjustments



Contact

DONNA GREEN
Vice President
+1 506 387 6930
dgreen@cwatlantic.com