

# LAST REMAINING SPACE FOR LEASE

 CUSHMAN &  
WAKEFIELD

GRAHAM STREET REALTY  
REAL ESTATE INVESTMENTS



UP TO ±3,200 SF  
OFFICE | R&D | LAB

[CUSHMANWAKEFIELD.COM](https://www.cushmanwakefield.com)

For More Information, Please Contact:

**Steven Leonard**  
Managing Director  
+1 415 722 1080  
[steven.leonard@cushwake.com](mailto:steven.leonard@cushwake.com)  
Lic #: 00909604

**Brian Foster**  
Executive Director  
+1 415 451 2437  
[brian.foster@cushwake.com](mailto:brian.foster@cushwake.com)  
Lic #: 01393059

**Drew Soltis**  
Associate  
+1 415 451 2415  
[drew.soltis@cushwake.com](mailto:drew.soltis@cushwake.com)  
Lic #: 02163430

1345 REDWOOD WAY

THE REDWOODS

...  
PETALUMA, CA



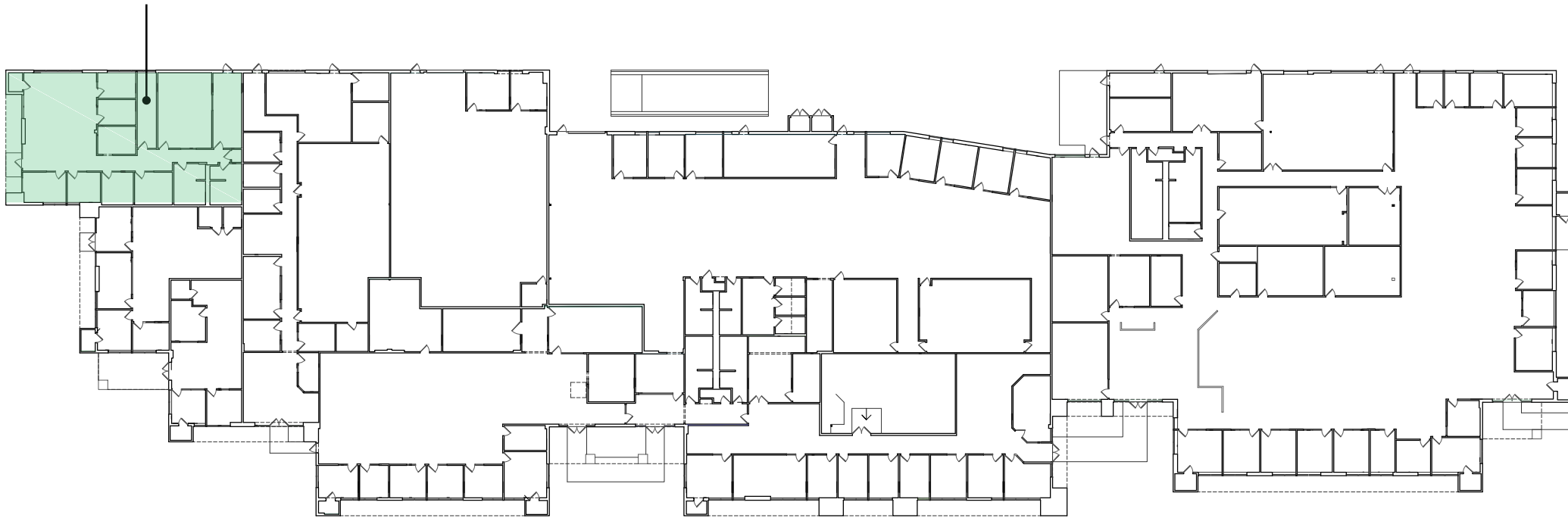
## PROPERTY HIGHLIGHTS

- Excellent Office/R&D/Lab Space
- Park-like setting surrounded by mature redwood trees
- ± 3,200 SF available
- North Petaluma location near the intersection of North McDowell Blvd and Old Redwood Highway
- \$1.25 NNN
- Approximately 242 parking spaces



# AVAILABILITIES

**±3,200 SF  
Available**



For More Information, Please Contact:

**Steven Leonard**  
Managing Director

+1 415 722 1080

[steven.leonard@cushwake.com](mailto:steven.leonard@cushwake.com)

Lic #: 00909604

**Brian Foster**  
Executive Director

+1 415 451 2437

[brian.foster@cushwake.com](mailto:brian.foster@cushwake.com)

Lic #: 01393059

**Drew Soltis**

Associate

+1 415 451 2415

[drew.soltis@cushwake.com](mailto:drew.soltis@cushwake.com)

Lic #: 02163430

1345 REDWOOD WAY

# THE REDWOODS

...

PETALUMA, CA



UP TO ±3,200 SF  
OFFICE | R&D | LAB

[CUSHMANWAKEFIELD.COM](https://www.cushmanwakefield.com)

For More Information, Please Contact:

**Steven Leonard**

Managing Director

+1 415 722 1080

[steven.leonard@cushwake.com](mailto:steven.leonard@cushwake.com)

Lic #: 00909604

**Brian Foster**

Executive Director

+1 415 451 2437

[brian.foster@cushwake.com](mailto:brian.foster@cushwake.com)

Lic #: 01393059

**Drew Soltis**

Associate

+1 415 451 2415

[drew.soltis@cushwake.com](mailto:drew.soltis@cushwake.com)

Lic #: 02163430

1345 REDWOOD WAY

THE REDWOODS

...

PETALUMA, CA