



1341 REDWOOD WAY

THE REDWOODS

...

PETALUMA, CA

LAST REMAINING SPACE FOR LEASE
UP TO ±3,200 SF WAREHOUSE AVAILABLE

Steven Leonard

Managing Director
+1 415 722 1080
steven.leonard@cushwake.com
Lic #: 00909604

Brian Foster

Executive Director
+1 415 451 2437
brian.foster@cushwake.com
Lic #: 01393059

Drew Soltis

Associate
+1 415 451 2415
drew.soltis@cushwake.com
Lic #: 02163430



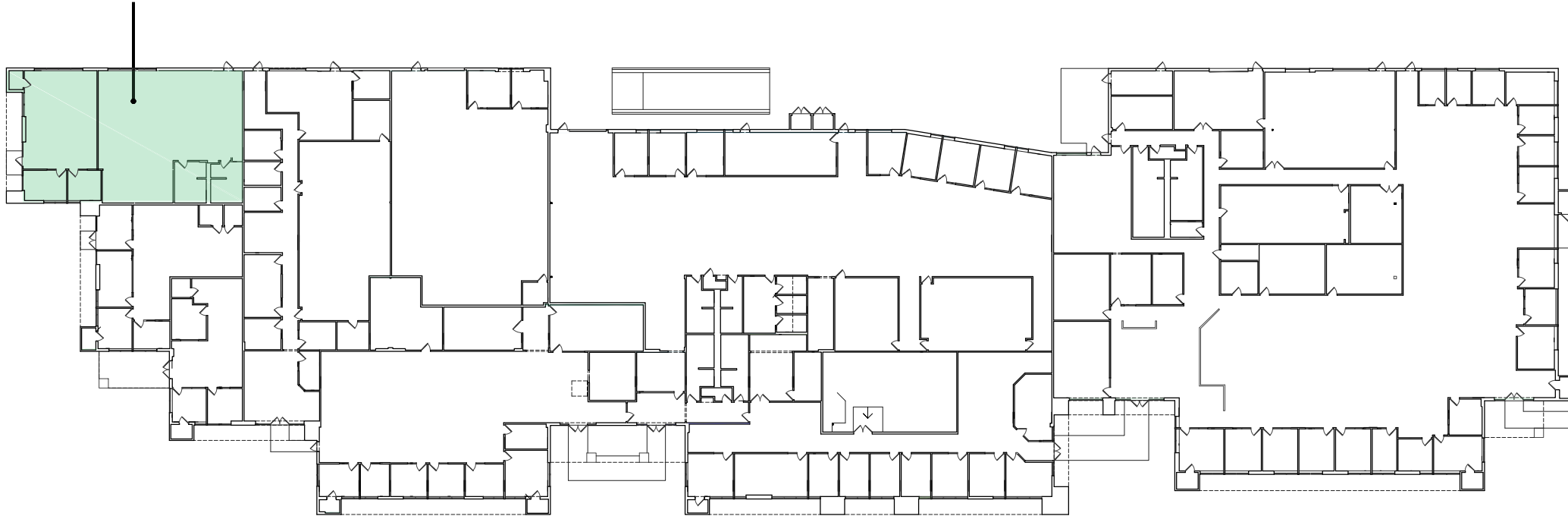
PROPERTY HIGHLIGHTS

- Excellent warehouse space
- ± 3,200 SF available
- \$1.25 NNN
- Approximately 242 parking spaces
- Park-like setting surrounded by mature redwood trees
- North Petaluma location near the intersection of North McDowell Blvd and Old Redwood Highway





Suite 1341
±3,200 RSF



1341 REDWOOD WAY

THE REDWOODS

...

PETALUMA, CA

LAST REMAINING SPACE FOR LEASE
UP TO ±3,200 SF WAREHOUSE AVAILABLE

Steven Leonard
Managing Director
+1 415 722 1080
steven.leonard@cushwake.com
Lic #: 00909604

Brian Foster
Executive Director
+1 415 451 2437
brian.foster@cushwake.com
Lic #: 01393059

Drew Soltis
Associate
+1 415 451 2415
drew.soltis@cushwake.com
Lic #: 02163430





1341 REDWOOD WAY

THE REDWOODS

...

PETALUMA, CA

LAST REMAINING SPACE FOR LEASE
UP TO ±3,200 SF WAREHOUSE AVAILABLE

Steven Leonard
Managing Director
+1 415 722 1080
steven.leonard@cushwake.com
Lic #: 00909604

Brian Foster
Executive Director
+1 415 451 2437
brian.foster@cushwake.com
Lic #: 01393059

Drew Soltis
Associate
+1 415 451 2415
drew.soltis@cushwake.com
Lic #: 02163430