



TURNKEY OFFICE FOR SUBLEASE

# 250 YONGE STREET

28<sup>TH</sup> FLOOR - 22,935 SF





# TURNKEY OFFICE FOR SUBLEASE

# 250 YONGE STREET

## DETAILS

Availability:	28 <sup>th</sup> Floor - 22,935 SF
Asking Rate:	Call Listing Agents
Additional Rent:	\$25.15 PSF (2021 est.)
Occupancy:	30 - 60 Days
Term Expiry:	March 30, 2024

## HIGHLIGHTS

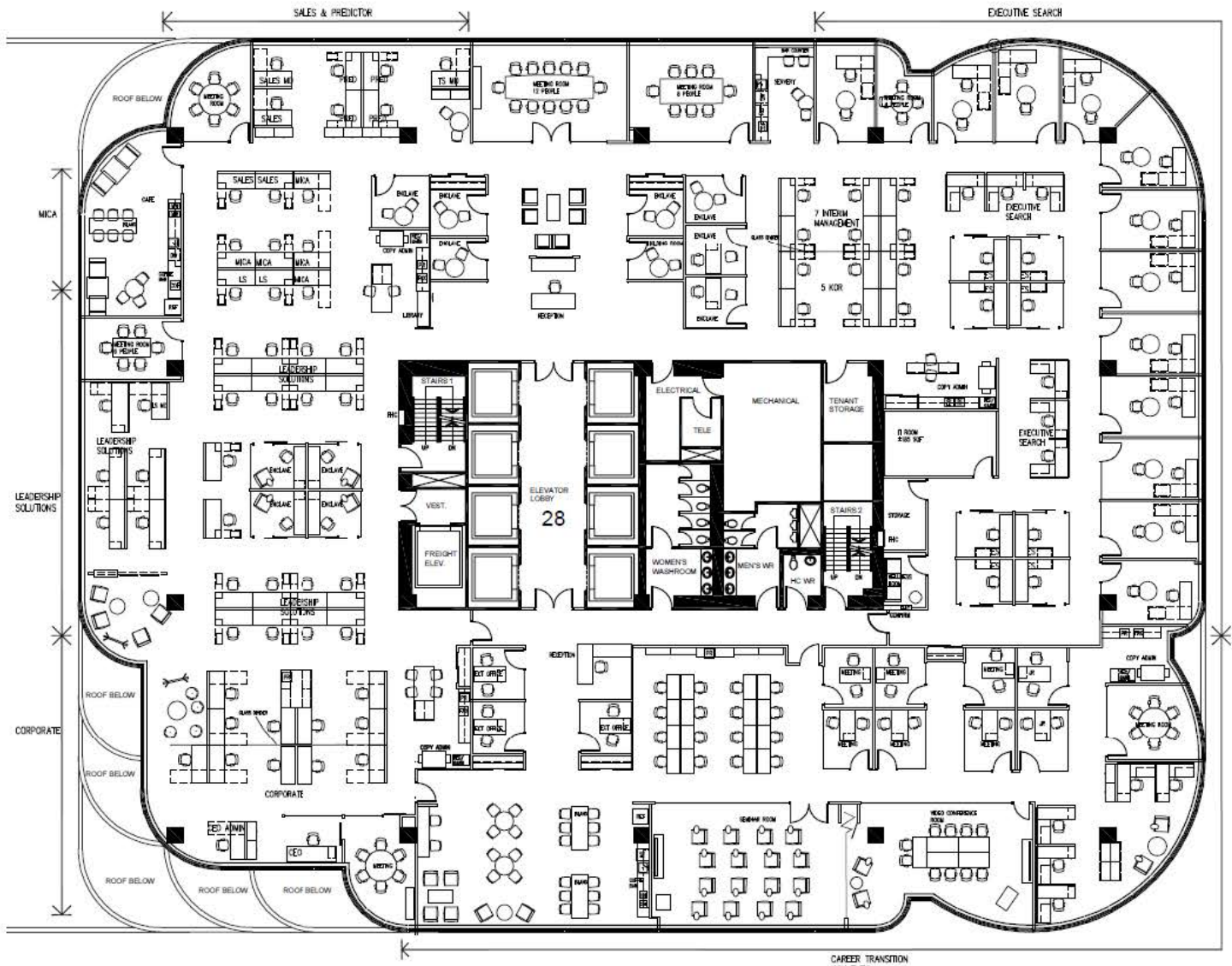
- Completely 'turnkey' sublease opportunity
- Built out space with high-end leasehold improvements
- Full floor opportunity - built out with a mix of offices, multiple meeting rooms, 2 kitchenettes, café, open area workstations and reception area
- Furniture potentially available
- Abundance of underground parking, 1: 3,500 sf Leased
- Direct connection to Toronto Eaton Centre mall
- Direct TTC subway access to Queen Station and Dundas Station



[CLICK HERE FOR VIRTUAL TOUR](#)

# FLOORPLAN

28<sup>th</sup> Floor - 22,935 SF



CLICK HERE FOR VIRTUAL TOUR

28<sup>TH</sup> FLOOR  
22,935 SF



28<sup>TH</sup> FLOOR  
22,935 SF





# CONTACT



**Andrea Sujer\***  
 Senior Client Coordinator  
 416 642 5372  
 andrea.sujer@cushwake.com

**Eric Shaw\***  
 Executive Vice President  
 416 359 2425  
 eric.shaw@cushwake.com

**Cushman & Wakefield ULC, Brokerage**  
 161 Bay Street, Suite 1500  
 Toronto, ON M5J 2S1  
 416 862 0611

**Cushman & Wakefield ULC, Brokerage**  
 No warranty or representation, expressed or implied, is made as to the accuracy of the information contained herein, and same is submitted subject to errors, omissions, change of price, rental or other conditions, withdrawal without notice, and to any specific listing condition, imposed by our principals. \*Sales Representative