



# Towers OF LAKEWAY



**TOWER 1**

**1,860 - 4,167 RSF  
AVAILABLE**



**TOWER 2**

**KEVIN GRANGER**  
kevin.granger@cushwake.com  
(512) 814 3403

**HOLMES ONWUKAIFE**  
holmes.onwukaife@cushwake.com  
(512) 439 6717

**OFFICE FOR LEASE**

## ADDRESS

### TOWER 1

1927 Lohmans Crossing | Lakeway, TX 78734

### TOWER 2

1921 Lohmans Crossing | Lakeway, TX 78734

## SITE INFORMATION

**Tower 1** - 1.52 Acres | **Tower 2** - 3.19 Acres

## YEAR BUILT

**Tower 1** - 2000 | **Tower 2** - 2008

## BUILDING SF

**Tower 1** - 25,331 SF

**Tower 2** - 29,333 SF

Total - 54,664 SF

## AVAILABILITIES

### Tower 1

Suite 202 - 2,993 SF

Suite 204 - 1,860 SF

### Tower 2

Suite 2206 - 4,167 SF

Suite 2204 - 1,877 SF







## DETAILS

**Buildings:** 54,664 SF two-building office project

**Parking:** 4.7:1,000; Building 1 - surface; Building 2 - reserved structured and surface

**Submarket:** Southwest

- ★ Class A finish-out
- ★ Covered parking available
- ★ Numerous amenities next door at the Oaks at Lakeway
- ★ 3 miles to the Hill Country Galleria
- ★ Exterior signage available
- ★ Convenient ingress and egress
- ★ Direct exterior access to suites
- ★ No add-on factor
- ★ Panoramic views of the Hill Country and Lake Travis









SUITE 202  
2,993 SF

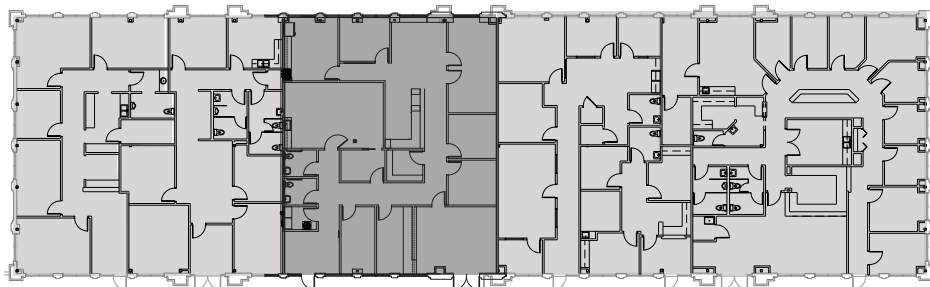


TOWER 1, FLOOR 2

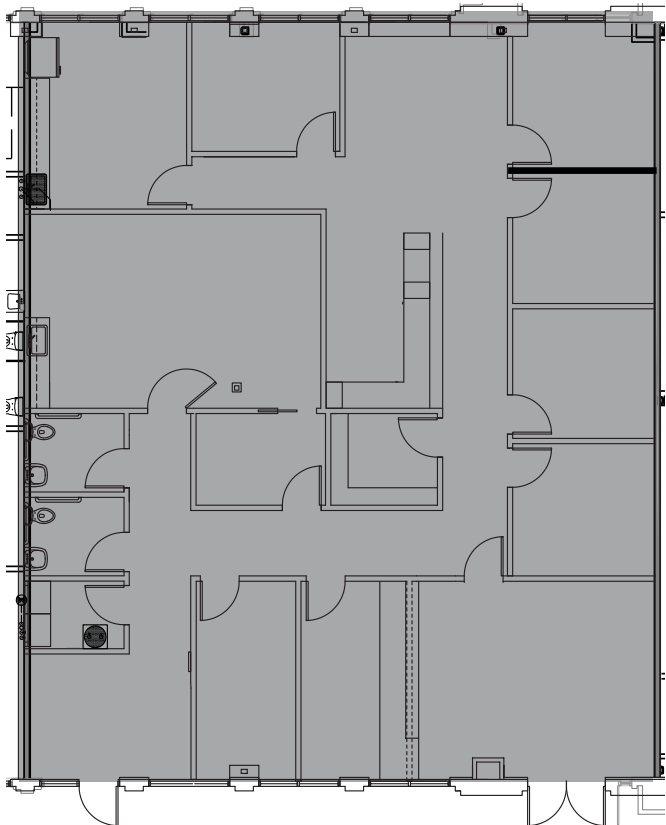
SUITE 202  
2,993 SF\*

CLICK FOR VIRTUAL TOUR

*\*Available within 60 days*



FULLY BUILT-OUT  
MEDICAL SUITE



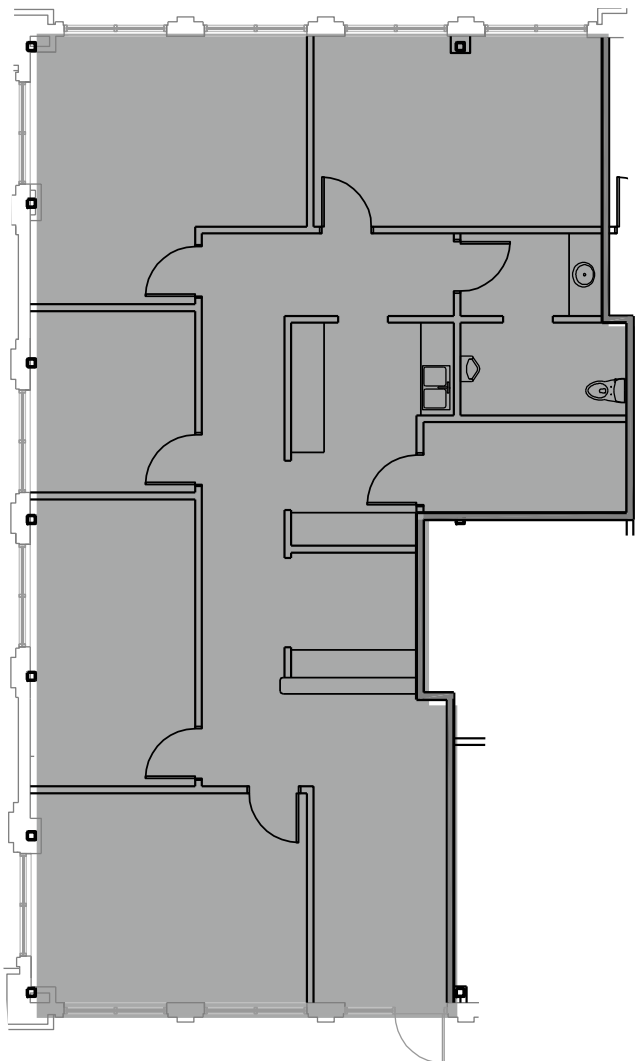
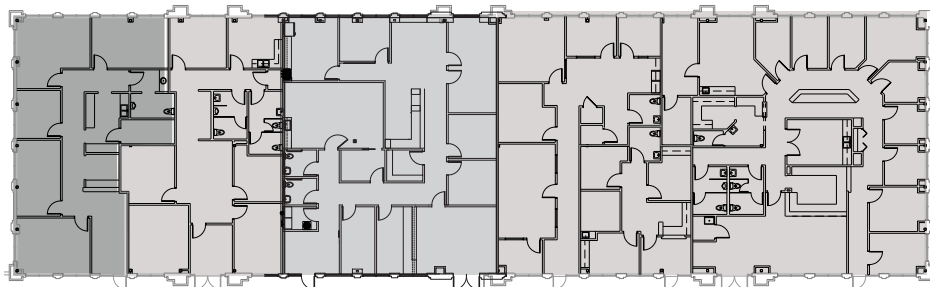
SUITE 202  
2,993 SF



TOWER 1, FLOOR 2

SUITE 204  
1,860 SF\*

*\*Available within 30 days*



Towers  
OF  
LAKEWAY

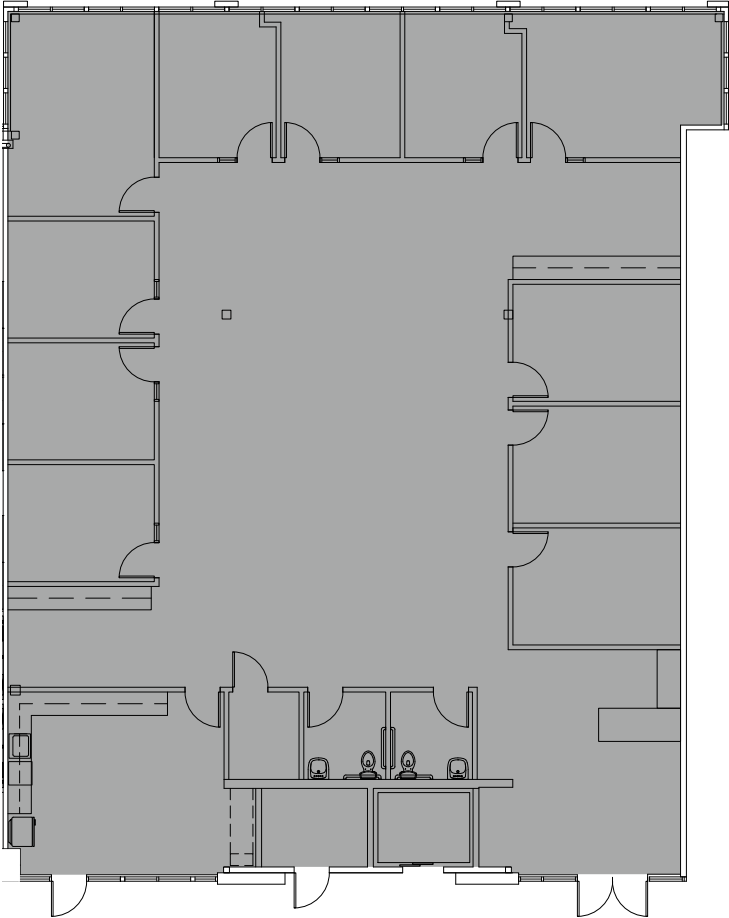
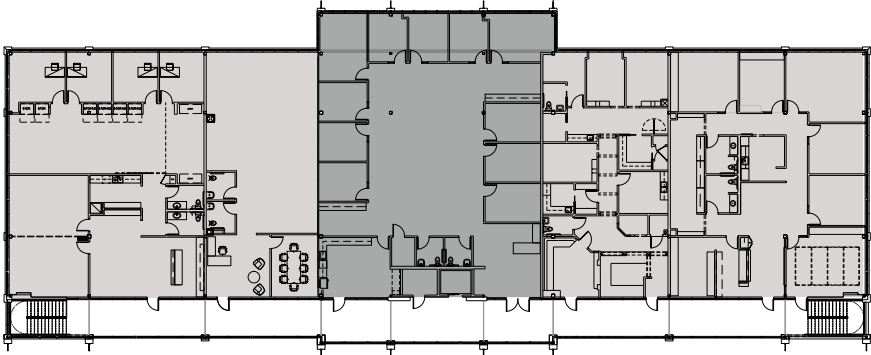
SUITE 2206  
4,167 SF



**TOWER 2, FLOOR 2**

SUITE 2206  
4,167 SF

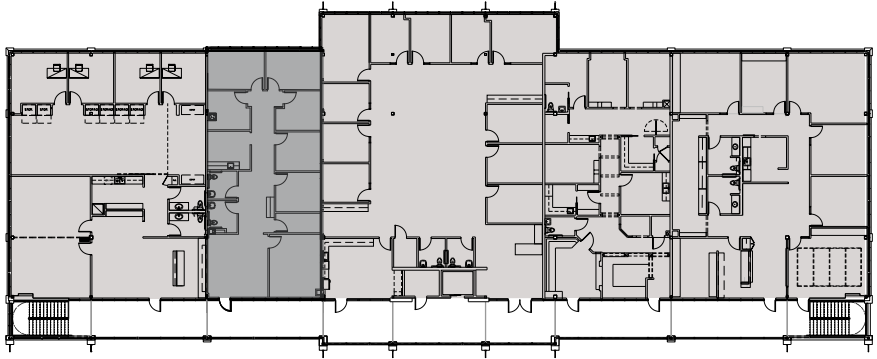
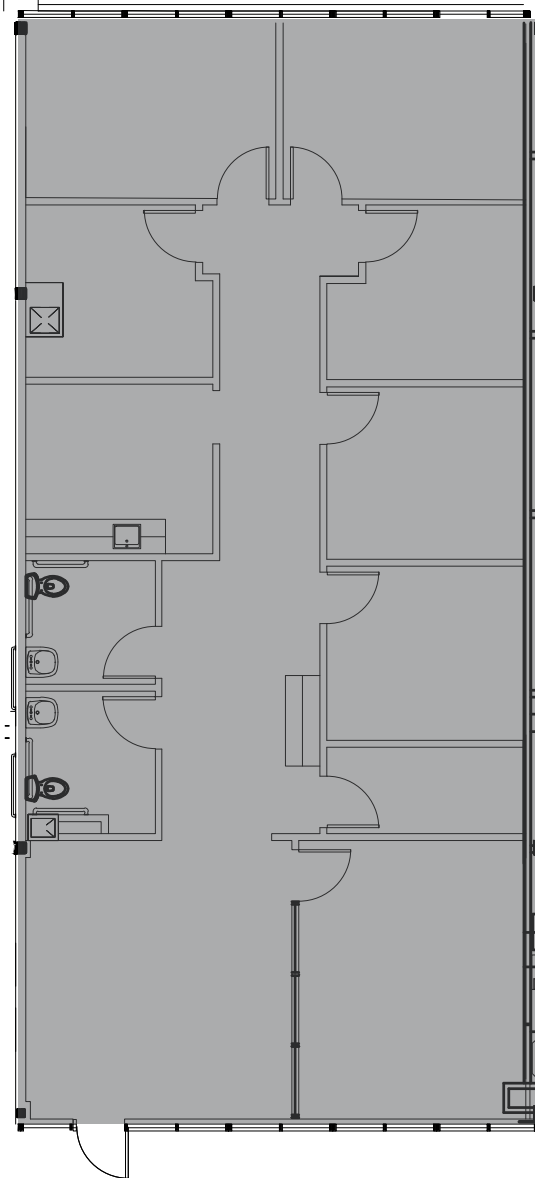
[CLICK FOR VIRTUAL TOUR](#) 



SUITE 2204  
1,877 SF

TOWER 2, FLOOR 2

SUITE 2204  
1,877 SF





Towers  
OF  
LAKEWAY

CONTACT



**KEVIN GRANGER**  
kevin.granger@cushwake.com  
(512) 814 3403

**HOLMES ONWUKAIFE**  
holmes.onwukaife@cushwake.com  
(512) 439 6717