

FOR LEASE – Medical Space

Palms of Pasadena Medical Plaza

1615 Pasadena Avenue South
St. Petersburg, Florida 33707



Property Highlights

- A four story, 45,548 RSF medical office building in South Pasadena with easy access to the beaches and downtown St. Petersburg
- From 1,219 to 9,634 RSF available
- Fully renovated lobby & restrooms
- Covered patient drop-off area
- Beautiful intercoastal waterway views from many suites
- Parking: 4.39/1,000 RSF; garage & surface
- Contiguous to HCA/Palms of Pasadena Hospital; a full service and emergency care hospital with over 300 beds and 350 physicians



Fully Renovated Lobby

Contact:
Wendy Giffin
Senior Director
+1 727 599 3799
wendy.giffin@cushwake.com

200 Central, Suite 805
St. Petersburg, FL 33701



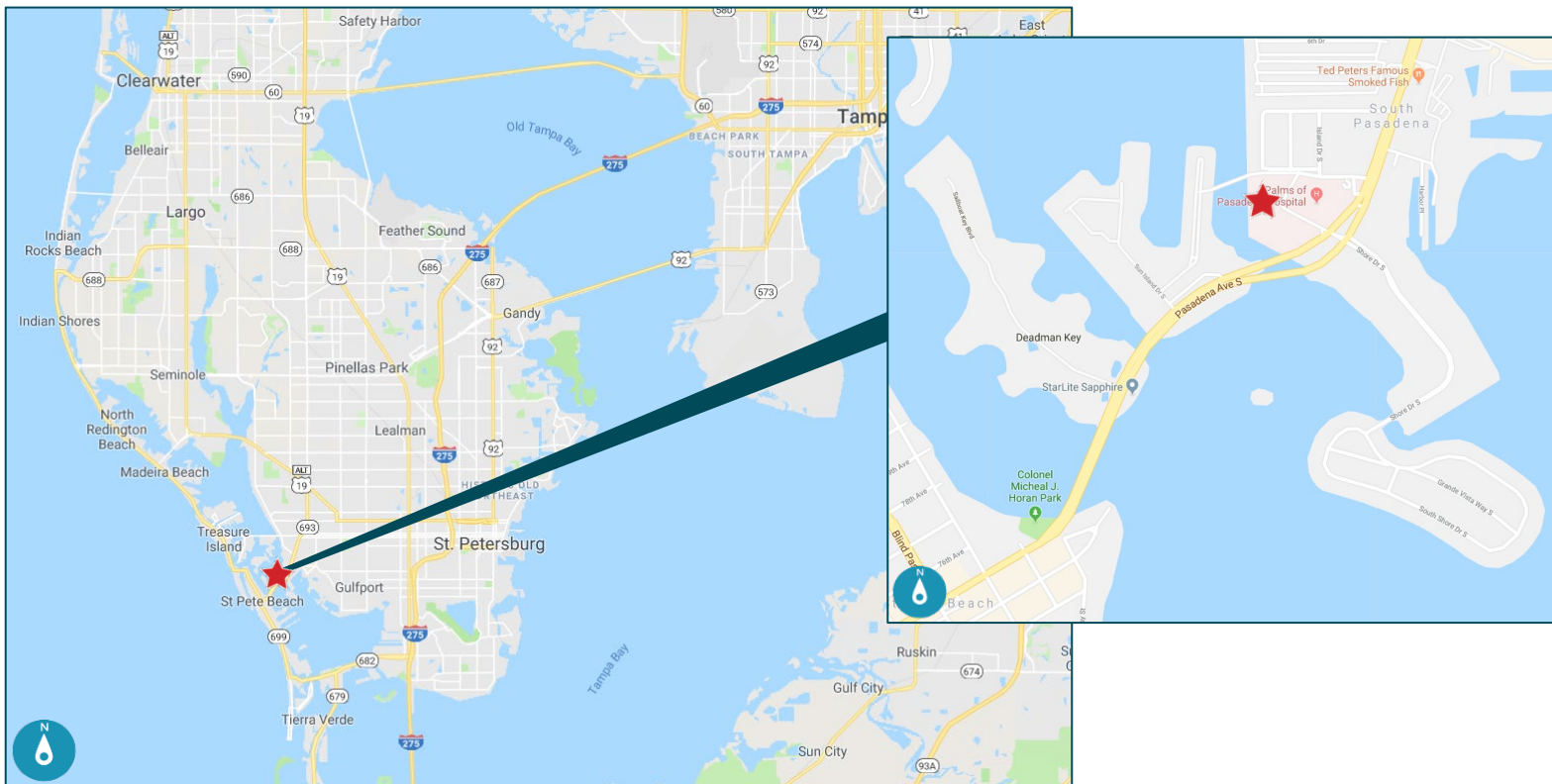
FOR LEASE – Medical Space

Palms of Pasadena Medical Plaza

1615 Pasadena Avenue South
St. Petersburg, Florida 33707

Location

- Located on the HCA/Palms of Pasadena Hospital campus
- Other area hospitals within an easy drive include:
 - St. Petersburg General Hospital
 - Northside Hospital
 - St. Anthony's Hospital
 - Bayfront Health/Orlando Health St. Petersburg Hospital
 - Johns Hopkins All Children's Hospital
- Situated on Boca Ciega Bay, an intercoastal waterway on the west side of Pinellas County with excellent views toward the east and west
- Easy access to beaches, downtown St. Petersburg, and Tyrone retail area

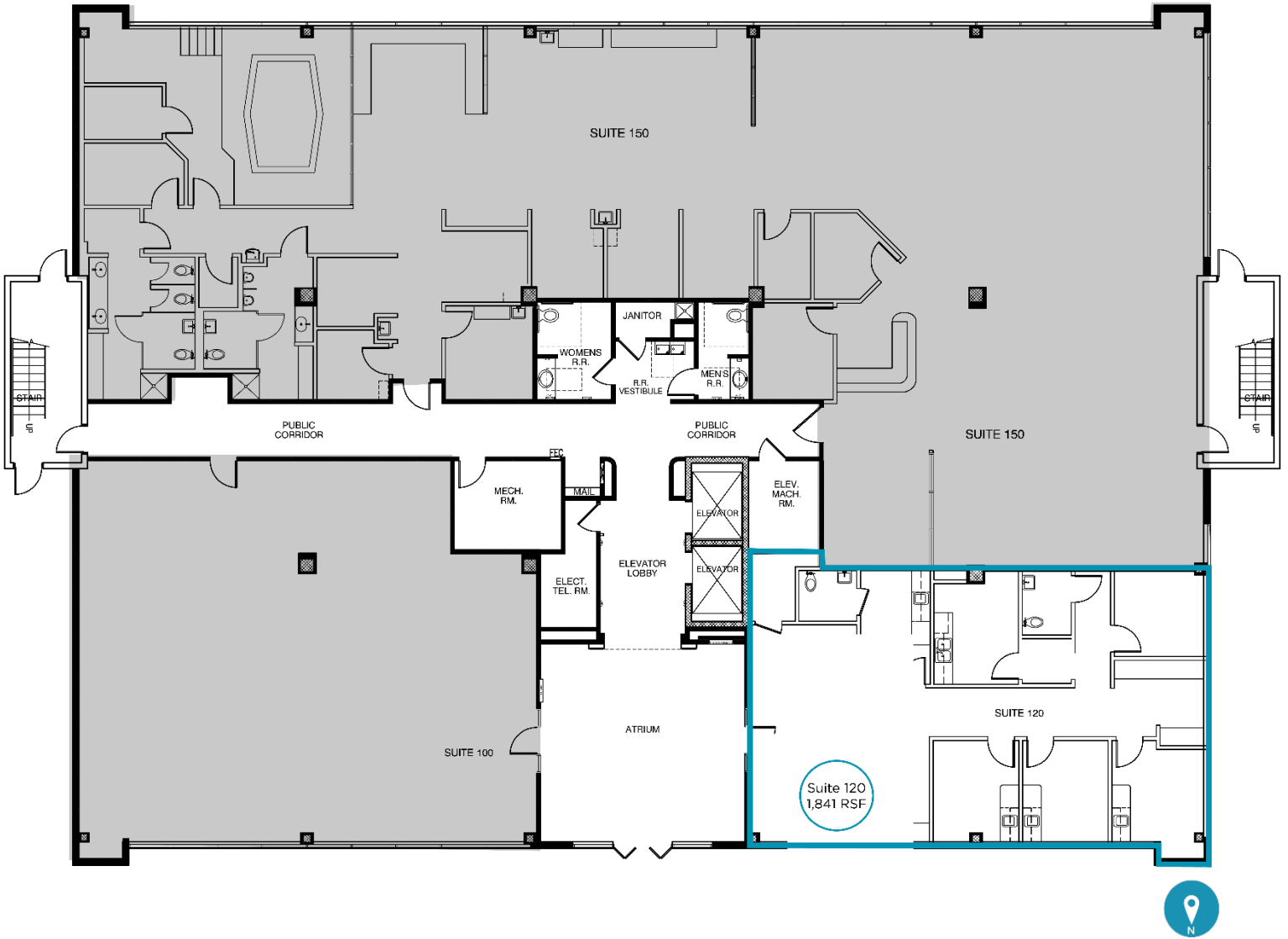


Contact:
Wendy Giffin
Senior Director
+1 727 599 3799
wendy.giffin@cushwake.com

200 Central, Suite 805
St. Petersburg, FL 33701



1st Floor Availabilities

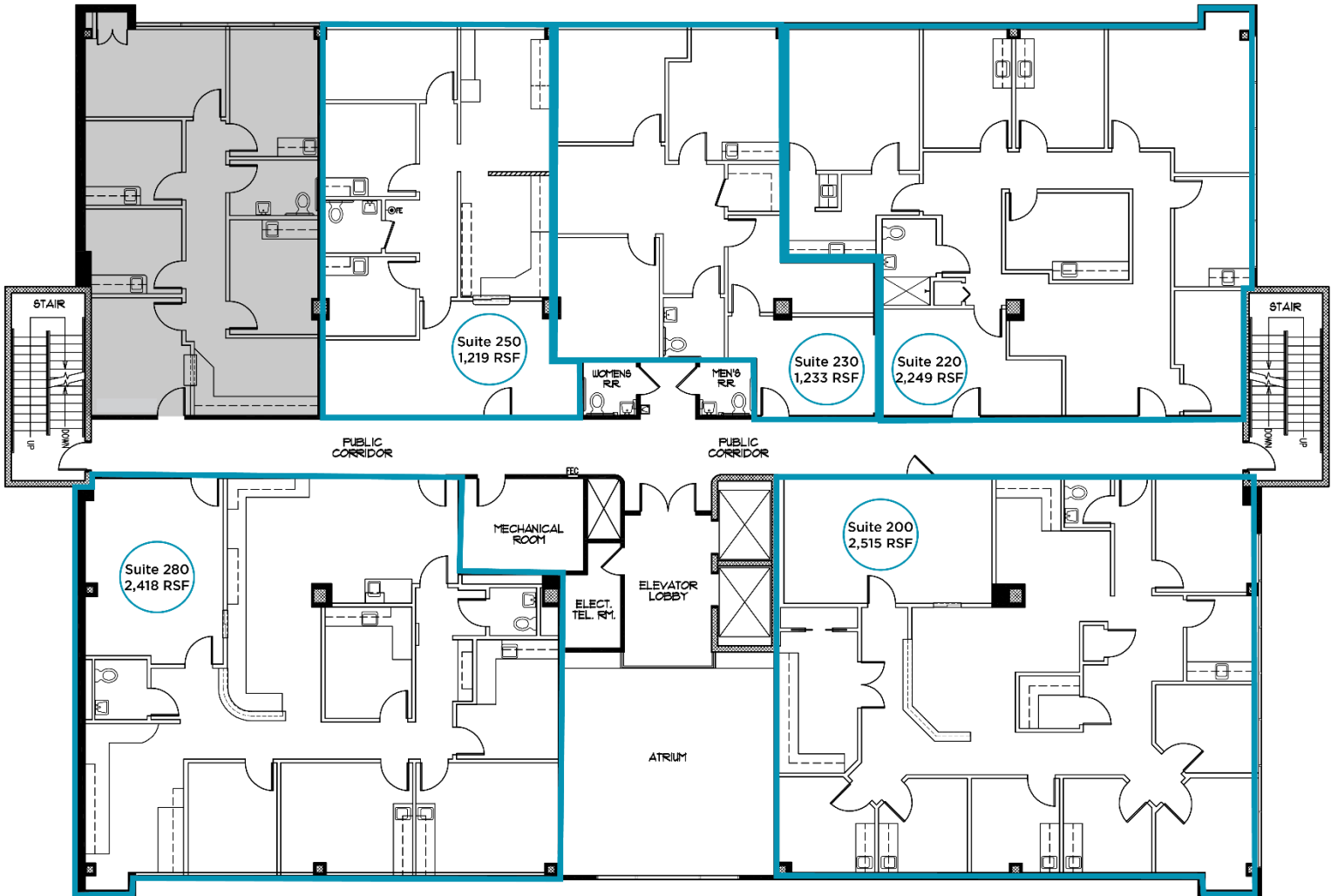


Contact:
Wendy Giffin
Senior Director
+1 727 599 3799
wendy.giffin@cushwake.com

200 Central, Suite 805
St. Petersburg, FL 33701



2nd Floor Availabilities



Suite	SF	Virtual Tour
200	2,515	LINK
220	2,249	LINK
230	1,233	LINK
250	1,219	LINK
280	2,418	LINK

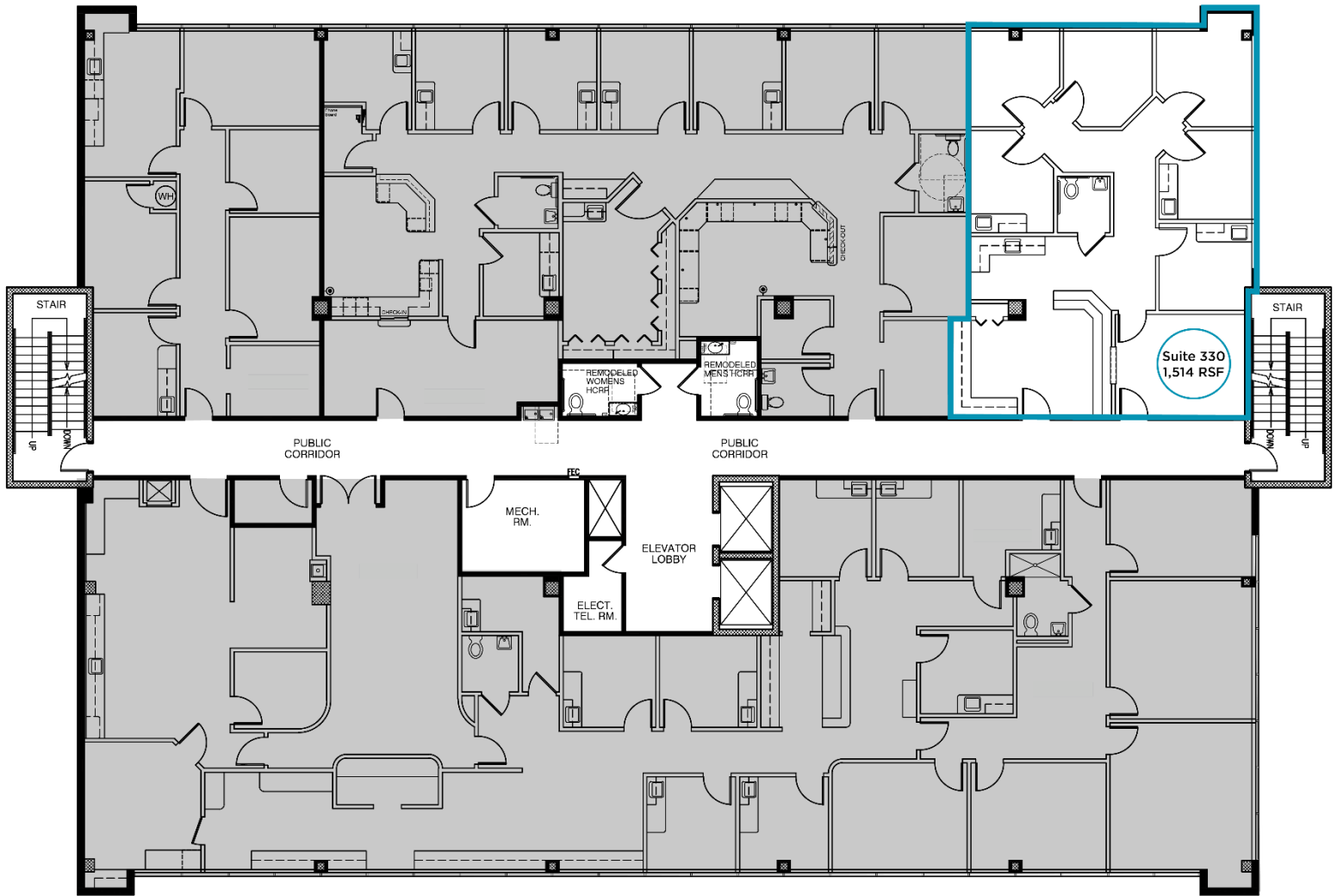
- 9,634 RSF currently available on 2nd floor
- 4,701 RSF contiguous available
- Full floor containing ±12,000 RSF could be made available

Contact:
Wendy Giffin
 Senior Director
 +1 727 599 3799
 wendy.giffin@cushwake.com

200 Central, Suite 805
 St. Petersburg, FL 33701



3rd Floor Availabilities

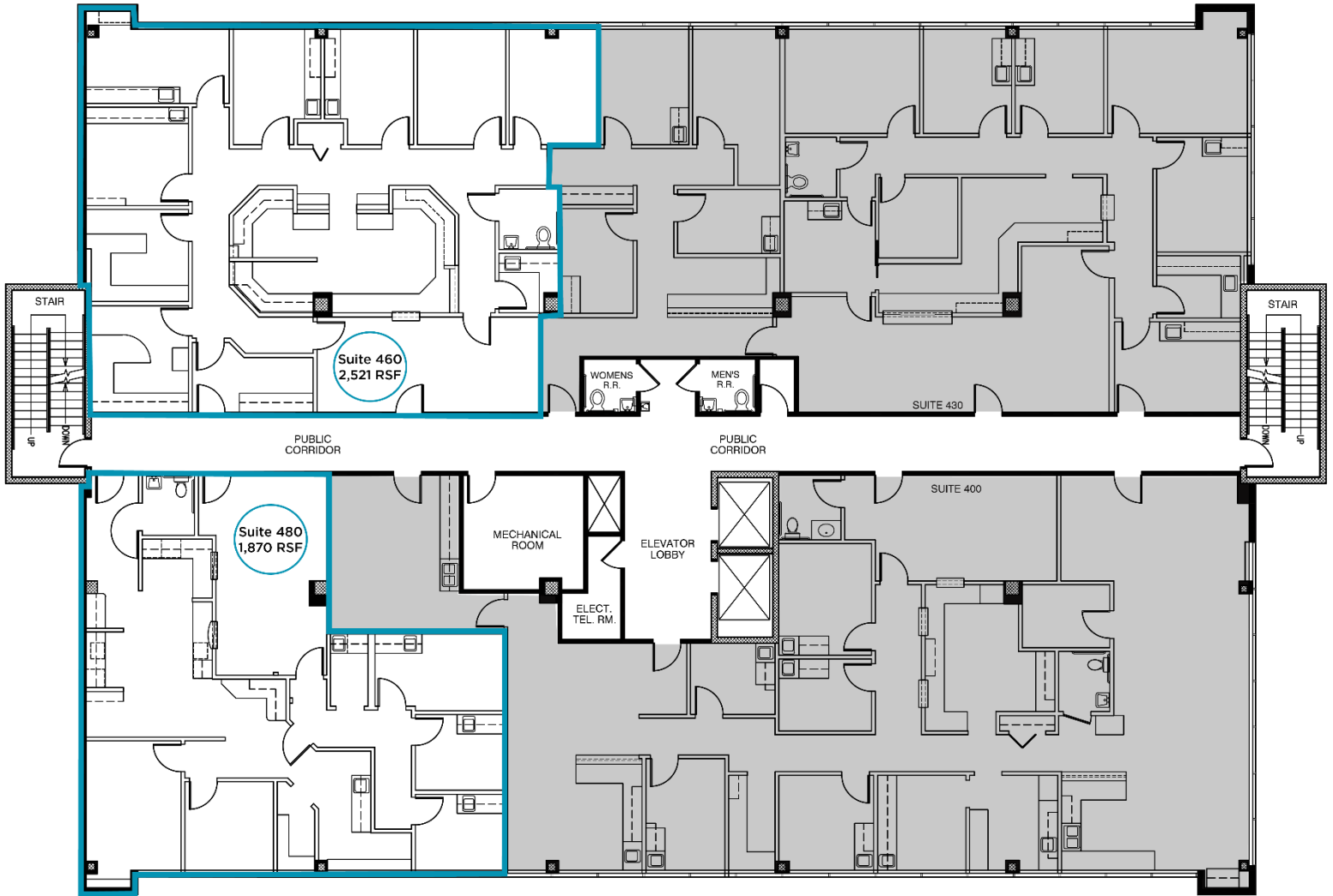


Contact:
Wendy Giffin
Senior Director
+1 727 599 3799
wendy.giffin@cushwake.com

200 Central, Suite 805
St. Petersburg, FL 33701



4th Floor Availabilities



Suite	SF	Virtual Tour
480	1,870	LINK

Contact:
Wendy Giffin
 Senior Director
 +1 727 599 3799
 wendy.giffin@cushwake.com

200 Central, Suite 805
 St. Petersburg, FL 33701

