

BLOCKS REMAINING:

3rd Floor - 15,000 - 18,118 RSF

4th Floor - 4,066 RSF (Corner Suite)

4th Floor - 2,120 RSF (Renovated)

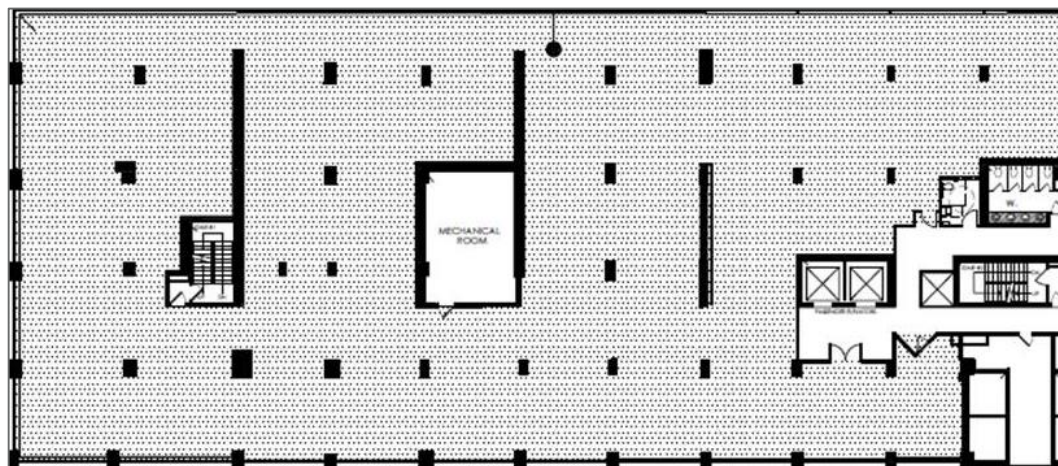
PROPERTY FEATURES

- Conveniently located in the heart of Center City
- Upgraded retail amenities
- Next to new Comcast Technology Center
- One block from Suburban Station
- High density area with excellent demographics
- Enclosed parking spaces
- New 40,000 SF City Fitness now open



OFFICE AVAILABILITIES

3rd Floor Vacancy



For more information, please contact:

Jason Bernardi
Director

+1 215 963 4005

jason.bernardi@cushwake.com

Cushman & Wakefield of Pennsylvania, LLC
One Liberty Place
1650 Market Street – 33rd Floor
Philadelphia, PA 19103

www.cushmanwakefield.com