

EXCELLENT DUMBO OPPORTUNITY

EMPIRE
STORES
DUMBO BROOKLYN

MIDTOWN
EQUITIES

CUSHMAN &
WAKEFIELD



EMPIRE STORES OFFERS VISITORS AN ALL-IN-ONE EXPERIENCE: TO RELAX, SHOP, DINE, AND TAKE IN THE VIEW.

EMPIRE
STORES
DUMBO BROOKLYN

- PRIME 2ND GENERATION RESTAURANT & BAR
- POPULAR DUMBO LOCATION WITH OUTSTANDING FOOT TRAFFIC
- UNBEATABLE VIEWS OF MANHATTAN

NEIGHBORING RETAILERS INCLUDE

Cecconi's, Dumbo House, West Elm, Feed, Time Out Market, Janes Carousel, Jacques Torres, Equinox, AIR Gallery, Etsy, Westville, Grimaldis Pizzeria

SPACE DETAILS

GROUND LEVEL 10,000 SF

FRONTAGE: 75 Feet

POSSESSION: IMMEDIATE

TERM: LONG TERM

LEASE TYPE: DIRECT

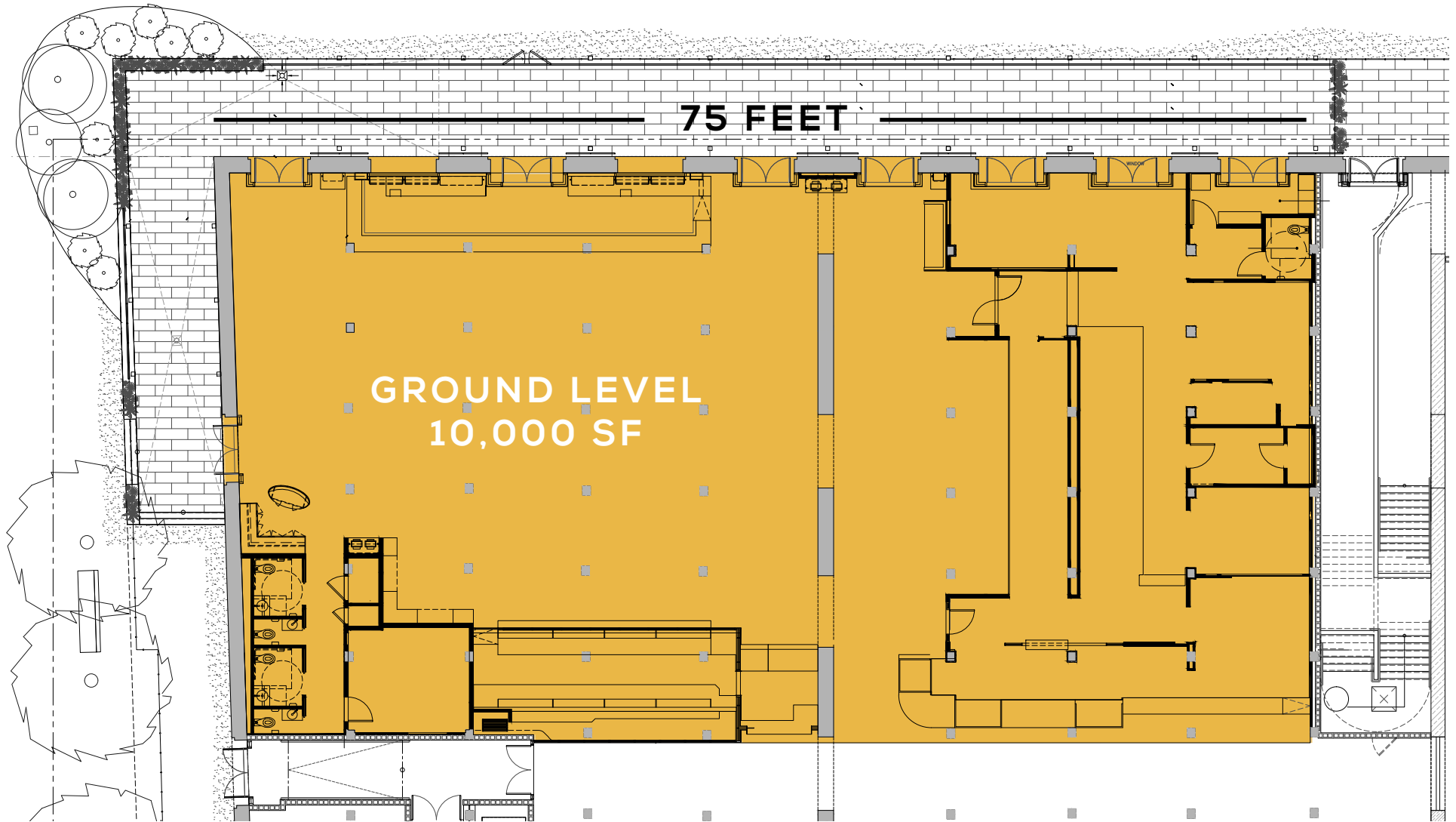
ASKING RENT: UPON REQUEST



EMPIRE
STARS
STORES
DUMBO BROOKLYN



FLOOR PLAN



LOCATION

CONVENIENTLY LOCATED IN DUMBO
WITHIN DOWNTOWN BROOKLYN
ADJACENT TO THE BROOKLYN
NAVY YARD, COBBLE HILL AND
MANHATTAN



MANHATTAN

FIDI

DUMBO



DOWNTOWN
BROOKLYN

BOERUM
HILL

BROOKLYN

PROSPECT
HEIGHTS

EMPIRE
STORES

DUMBO BROOKLYN

ADJACENT NEIGHBORS

INCLUDE

BROOKLYN
BRIDGE PARK

west elm

TimeOut
MARKET



sweetgreen

BROOKLYN
NAVY YARD

STEINER
STUDIOS

TRANSPORTATION



LEASING

FOR MORE INFORMATION,
PLEASE CONTACT:

IAN LERNER

212.841.5948

IAN.LERNER@CUSHWAKE.COM



©2022 Cushman & Wakefield. All rights reserved. The information contained in this communication is strictly confidential. This information has been obtained from sources believed to be reliable but has not been verified. NO WARRANTY OR REPRESENTATION, EXPRESS OR IMPLIED, IS MADE AS TO THE CONDITION OF THE PROPERTY (OR PROPERTIES) REFERENCED HEREIN OR AS TO THE ACCURACY OR COMPLETENESS OF THE INFORMATION CONTAINED HEREIN, AND SAME IS SUBMITTED SUBJECT TO ERRORS, OMISSIONS, CHANGE OF PRICE, RENTAL OR OTHER CONDITIONS, WITHDRAWAL WITHOUT NOTICE, AND TO ANY SPECIAL LISTING CONDITIONS IMPOSED BY THE PROPERTY OWNER(S). ANY PROJECTIONS, OPINIONS OR ESTIMATES ARE SUBJECT TO UNCERTAINTY AND DO NOT SIGNIFY CURRENT OR FUTURE PROPERTY PERFORMANCE.



EMPIRE
★ ★ ★ ★ ★
STORES
DUMBO BROOKLYN

