

240 EAST
54TH STREET

SOULCYCLE

Skin Laundry

Skin Laundry



COFFEE



EXCELLENT
SUTTON PLACE
OPPORTUNITY





240 EAST 54TH STREET

- PRIME 2ND GENERATION FITNESS SPACE
- PERFECT FOR ALL FITNESS USE
- GREAT SIGNAGE AND COTENANCY

NEIGHBORING RETAILERS INCLUDE

Equinox, Blink Fitness, Juice Press,
Wolfgang's Steakhouse, Rosa Mexicana,
Whole Foods, Clean Market, Morton Willams

SPACE DETAILS

GROUND LEVEL

3,850 SF

FRONTAGE:

20 Feet

POSSESSION:

Arranged

TERM:

Long Term

LEASE TYPE:

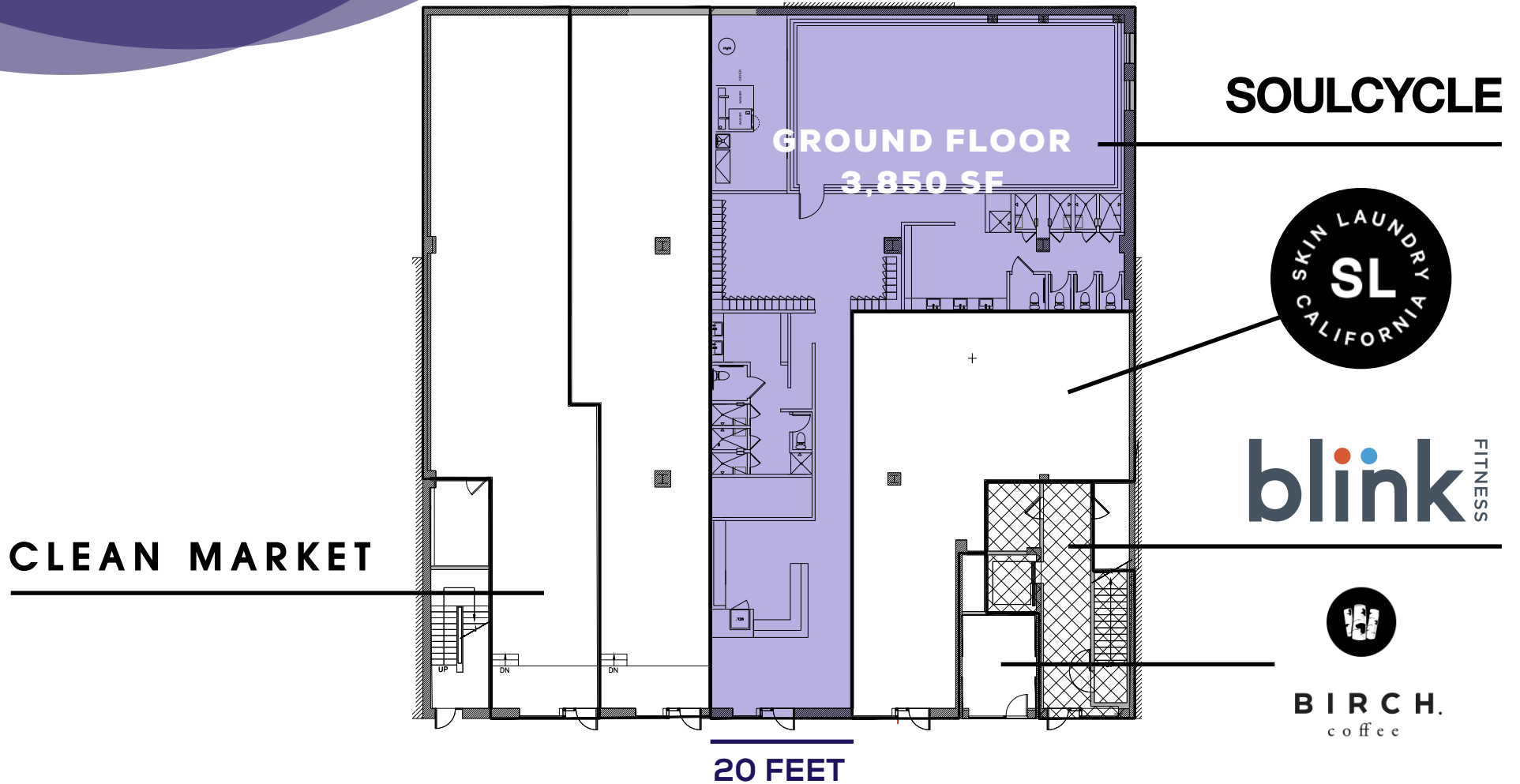
Direct

ASKING RENT:

Upon Request



FLOOR PLAN



54TH STREET

LOCATION

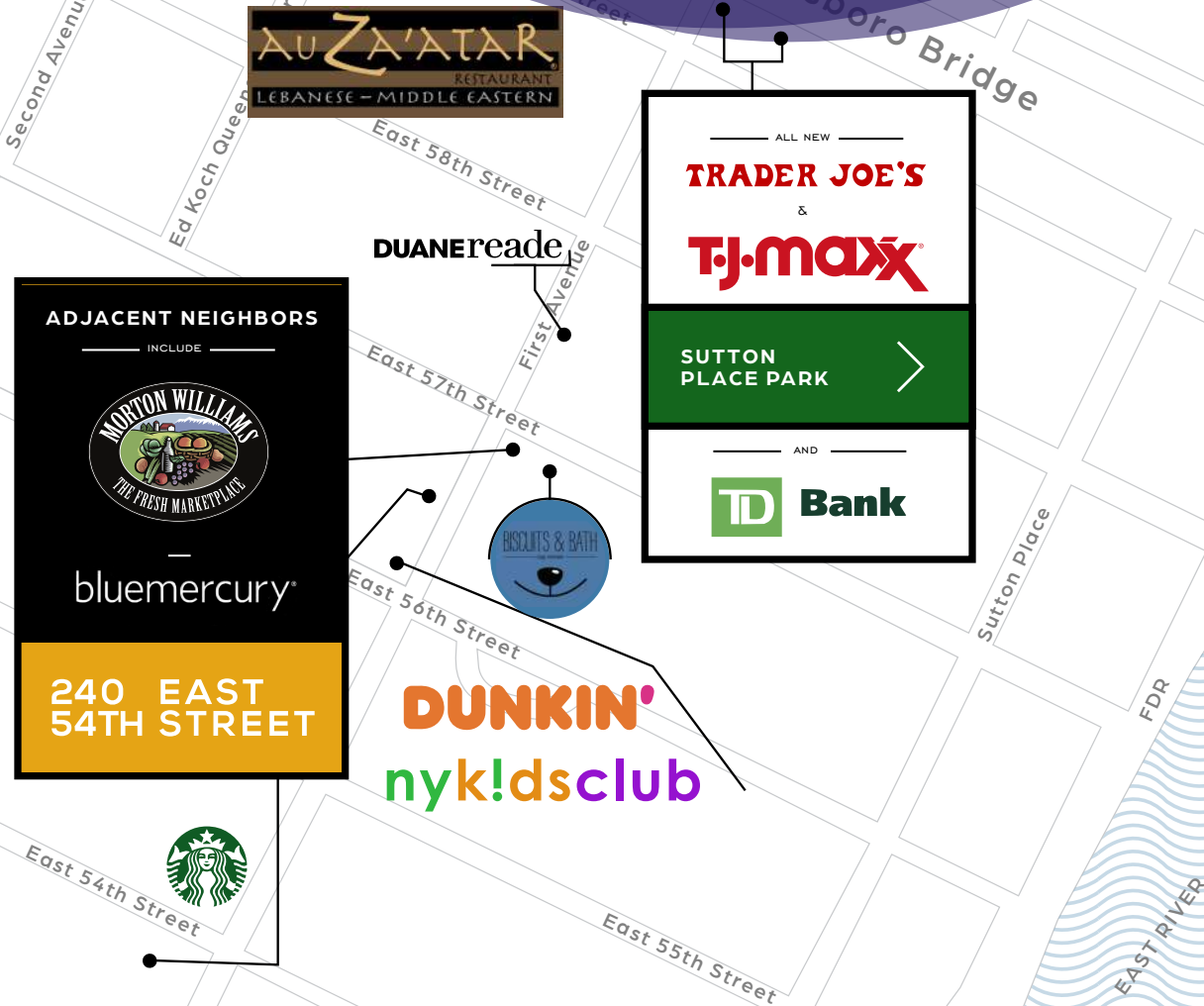
Conveniently located in popular Sutton Place neighborhood within Midtown East — adjacent to the UES and Murray Hill



DEMOGRAPHICS

Within 1/2 Mile Radius of Site

POPULATION	59,433
DAYTIME POPULATION	136,932
TOTAL HOUSING UNITS	42,648
MEDIAN AGE	43
HOUSEHOLD INCOME	\$218,422



TRANSPORTATION



LEASING

FOR MORE INFORMATION,
PLEASE CONTACT:

IAN LERNER

212.841.5948

IAN.LERNER@CUSHWAKE.COM



©2022 Cushman & Wakefield. All rights reserved. The information contained in this communication is strictly confidential. This information has been obtained from sources believed to be reliable but has not been verified. NO WARRANTY OR REPRESENTATION, EXPRESS OR IMPLIED, IS MADE AS TO THE CONDITION OF THE PROPERTY (OR PROPERTIES) REFERENCED HEREIN OR AS TO THE ACCURACY OR COMPLETENESS OF THE INFORMATION CONTAINED HEREIN, AND SAME IS SUBMITTED SUBJECT TO ERRORS, OMISSIONS, CHANGE OF PRICE, RENTAL OR OTHER CONDITIONS, WITHDRAWAL WITHOUT NOTICE, AND TO ANY SPECIAL LISTING CONDITIONS IMPOSED BY THE PROPERTY OWNER(S). ANY PROJECTIONS, OPINIONS OR ESTIMATES ARE SUBJECT TO UNCERTAINTY AND DO NOT SIGNIFY CURRENT OR FUTURE PROPERTY PERFORMANCE.

