

207
WEST
25TH
STREET

EXCELLENT LARGE-FORMAT CHELSEA RETAIL/OFFICE OPPORTUNITY

55 FT OF FRONTAGE ON NORTH SIDE OF W. 25TH STREET BETWEEN SEVENTH AND EIGHTH AVENUES



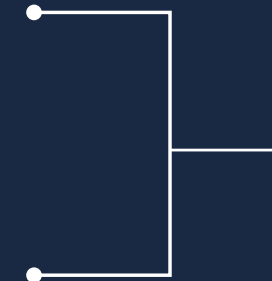
SPACE DETAILS

Comments

- Prime location in the epicenter of Chelsea shopping district, across the street from Whole Foods
- Formerly Stickley Furniture; all dry uses considered including office, medical and school
- Extensive loading dock access
- Excellent signage opportunity including: four flag signs; lettering on the building facade; entrance awning; and window signage.

Second Level:
13,307 SF

Ground Floor:
7,012 SF



Total:
20,319 SF

Frontage:
55'

Ceiling Ht:
±12'4" Second Level
±15' Ground Floor

Possession:
Immediate

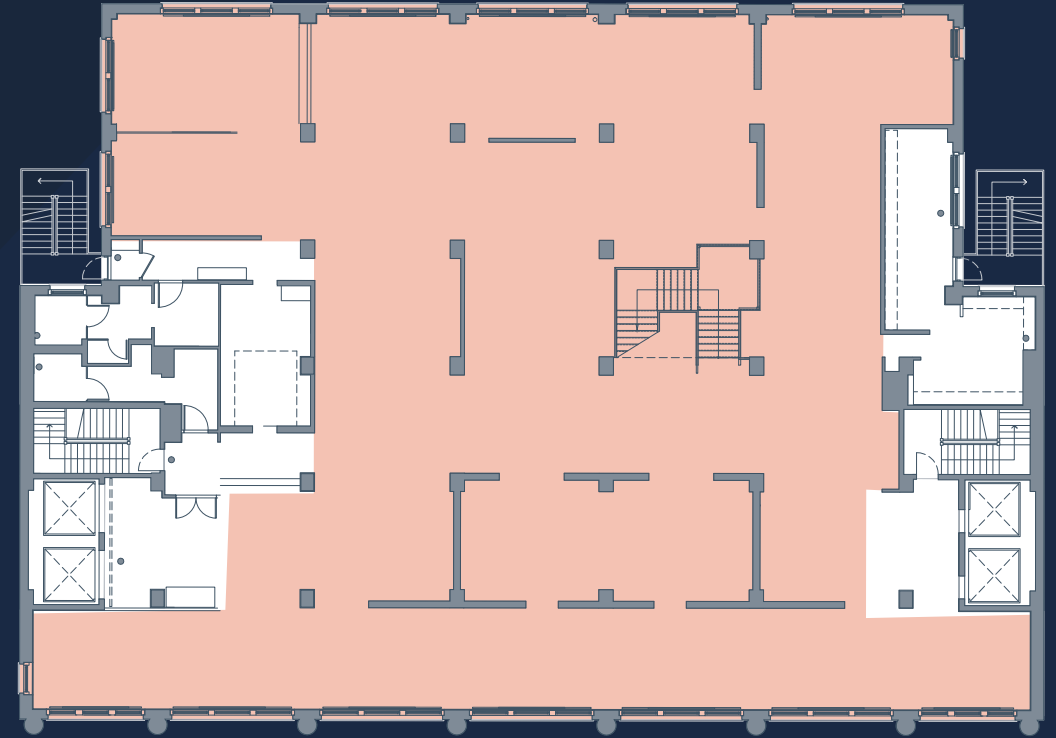
Lease Type:
Direct

FLOOR PLANS

GROUND FLOOR
7,012 SF



SECOND LEVEL
13,307 SF



WEST 25TH STREET

NEIGHBORING RETAILERS INCLUDE:

BUY BUY BABY

WHOLE FOODS

BLINK

BEAN & BEAN COFFEE ROASTERS

7-ELEVEN

BLOOMIE NAILS

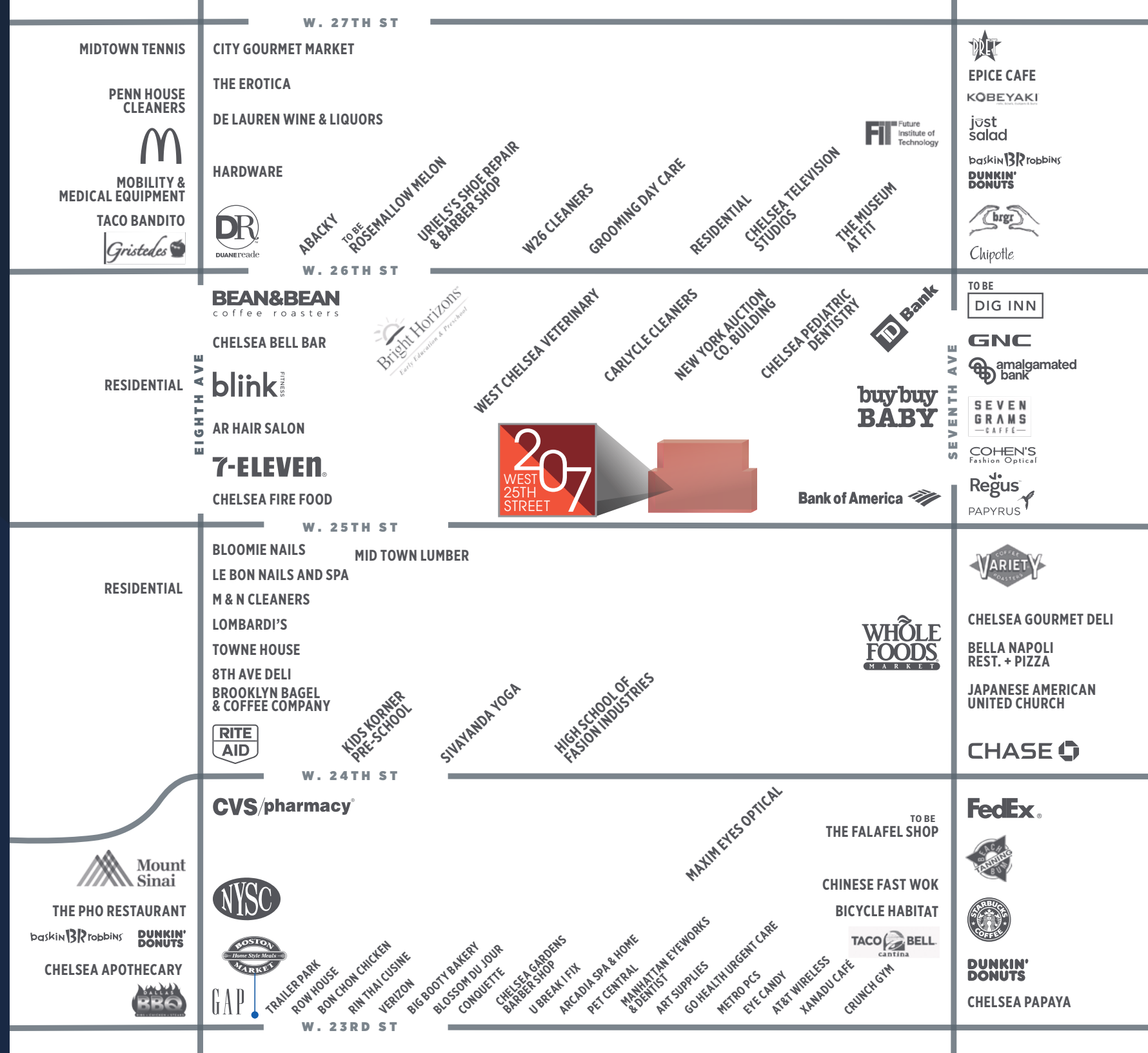
CVS

STARBUCKS

DIG INN

GNC

PAPYRUS





PLEASE CONTACT US FOR LEASING INQUIRIES:

RETAIL LEASING

STEVEN SOUTENDIJK

212 713 6845

STEVEN.SOUTENDIJK@CUSHWAKE.COM

SEAN MORAN

212 841 7668

SEAN.MORAN@CUSHWAKE.COM

PATRICK O'ROURKE

212 660 7777

PATRICK.OROURKE@CUSHWAKE.COM

OFFICE LEASING

MARK MANDELL

212 841 7890

MARK.MANDELL@CUSHWAKE.COM

GREG KUHLMAN

212 841 7959

GREG.KUHLMAN@CUSHWAKE.COM

CAROLINE COLLINS

212 318 9745

CAROLINE.COLLINS@CUSHWAKE.COM

