



FOR SUBLEASE

**20 CHURCH STREET
HARTFORD, CT**



**CUSHMAN &
WAKEFIELD**

2 Suites Available

12,348 RSF – 19th Floor

3,491 RSF – 15th Floor

\$18.00 Gross

280 Trumbull Street, 21st Floor
Hartford, CT 06103
Main +1 860 249 0900
cushmanwakefield.com



Highlights

- Furniture can be included
- Kitchenette in both suites
- Attached parking garage
- On-site Grab-n-Go food service
- On-site security
- On-site fitness center with lockers and showers
- On-site conference center



Space Available

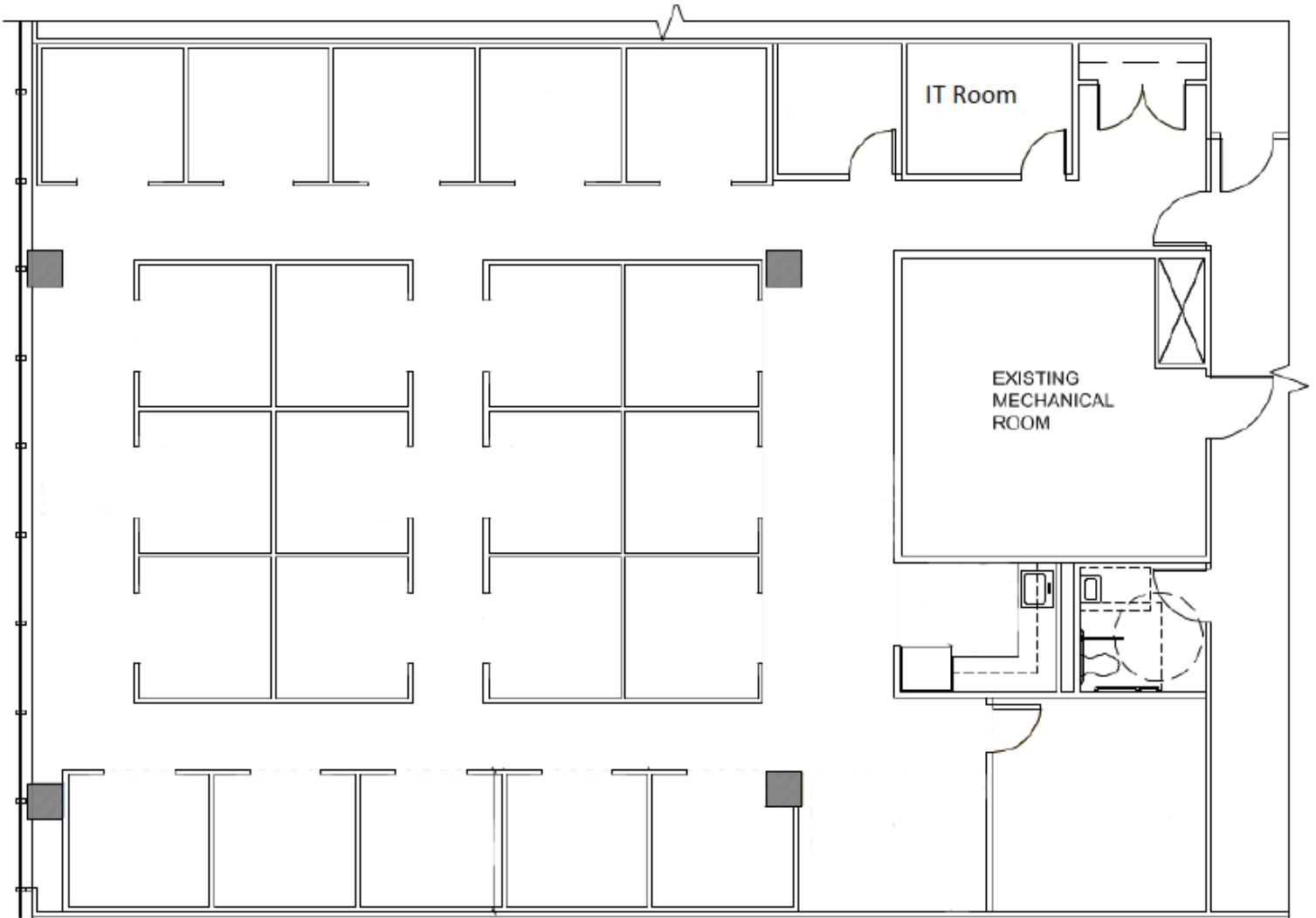
Floor Number	Square Footage	Price	Lease End Date
15	3,491	\$18.00 FSG	12/31/2025
19	12,348	\$18.00 FSG	12/31/2025

Contact

JOEL GRIECO
Executive Director
+1 860 616 1443
Joel.Grieco@cushwake.com

280 Trumbull Street, 21st Floor
Hartford, CT 06103
Main +1 860 249 0900
cushmanwakefield.com

Floor 15
3,491 SF



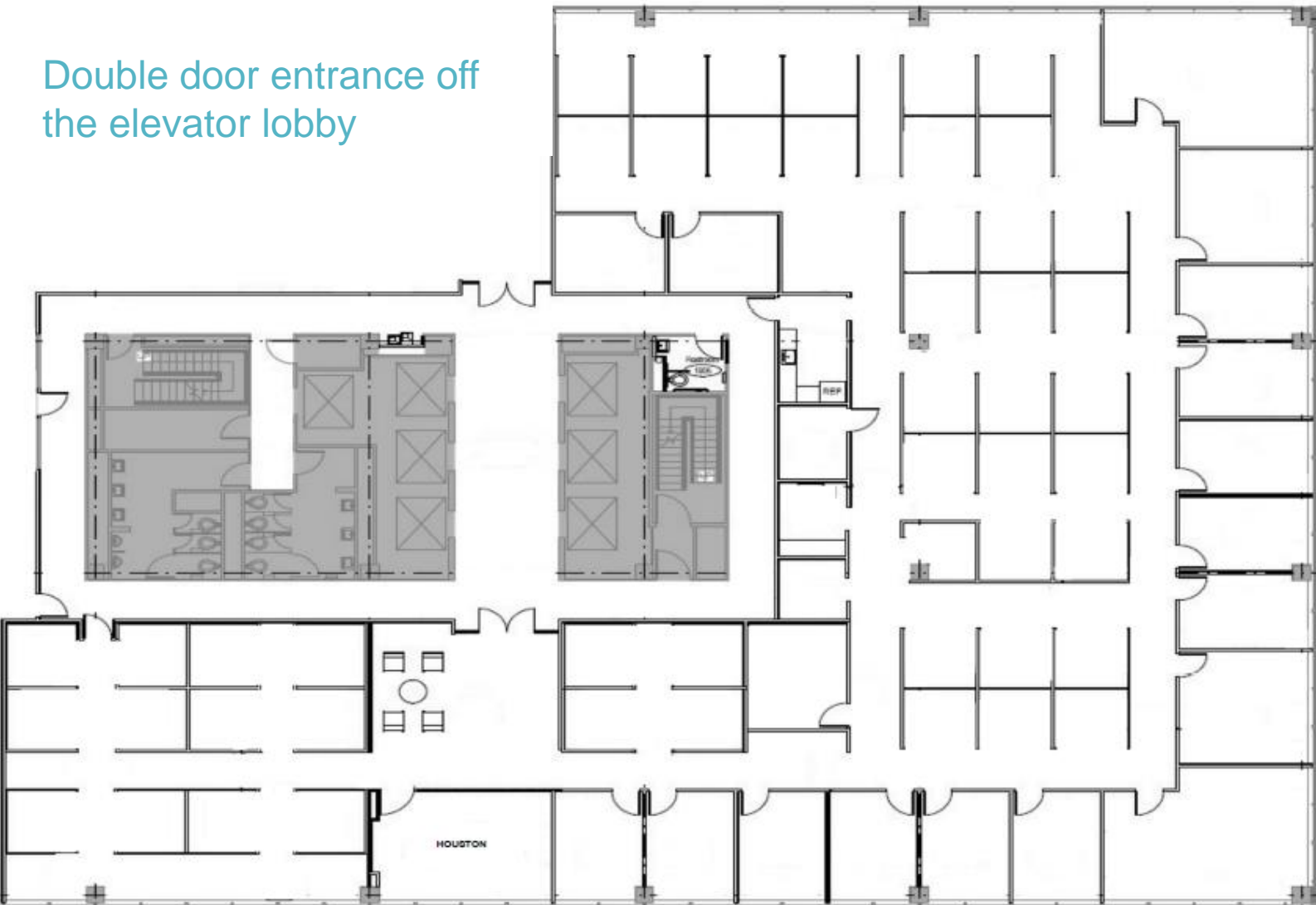
Contact

JOEL GRIECO
Executive Director
+1 860 616 1443
first.last@cushwake.com

280 Trumbull Street, 21st Floor
Hartford, CT 06103
Main +1 860 249 0900
cushmanwakefield.com

Floor 19
12,348 SF

Double door entrance off
the elevator lobby



Contact

JOEL GRIECO
Executive Director
+1 860 616 1443
first.last@cushwake.com

280 Trumbull Street, 21st Floor
Hartford, CT 06103
Main +1 860 249 0900
cushmanwakefield.com