

AVAILABLE FOR LEASE

REDLANDS EAST

PERRIS, CALIFORNIA



255,171 SF Industrial Building

For more Information, please contact:



TAL SIGLAR, CCIM
909.942.4680
tal.siglar@cushwake.com
License 01229412

DANIEL WAHL
909.942.4651
daniel.wahl@cushwake.com
License 02053165

Proudly Owned by a Joint Venture Between

LAKE CREEK INDUSTRIAL LLC



AVAILABLE FOR LEASE

REDLANDS EAST

PERRIS, CALIFORNIA

255,171 SF Industrial Building

BUILDING FEATURES



255,171 SF Building



31 Dock High Doors (9'x10')



9,626 SF Deluxe Office Area



2 Ground Level Doors (12'X14')



40' Minimum Clear Height



60'x56' Column Spacing



ESFR Sprinkler System (K-25@45 psi)



101 Auto Parking Stalls



1,200 Amps (4,000 UGPS)



2% Acrylic Dome Skylight



LED Warehouse Lights



47 Trailer Stalls



185' Secured & Gated Concrete Truck Court



White Scrim Ceiling Foil



TAL SIGLAR, CCIM
909.942.4680
tal.siglar@cushwake.com
License 01229412

DANIEL WAHL
909.942.4651
daniel.wahl@cushwake.com
License 02053165

Proudly Owned by a Joint Venture Between

LAKE CREEK INDUSTRIAL LLC

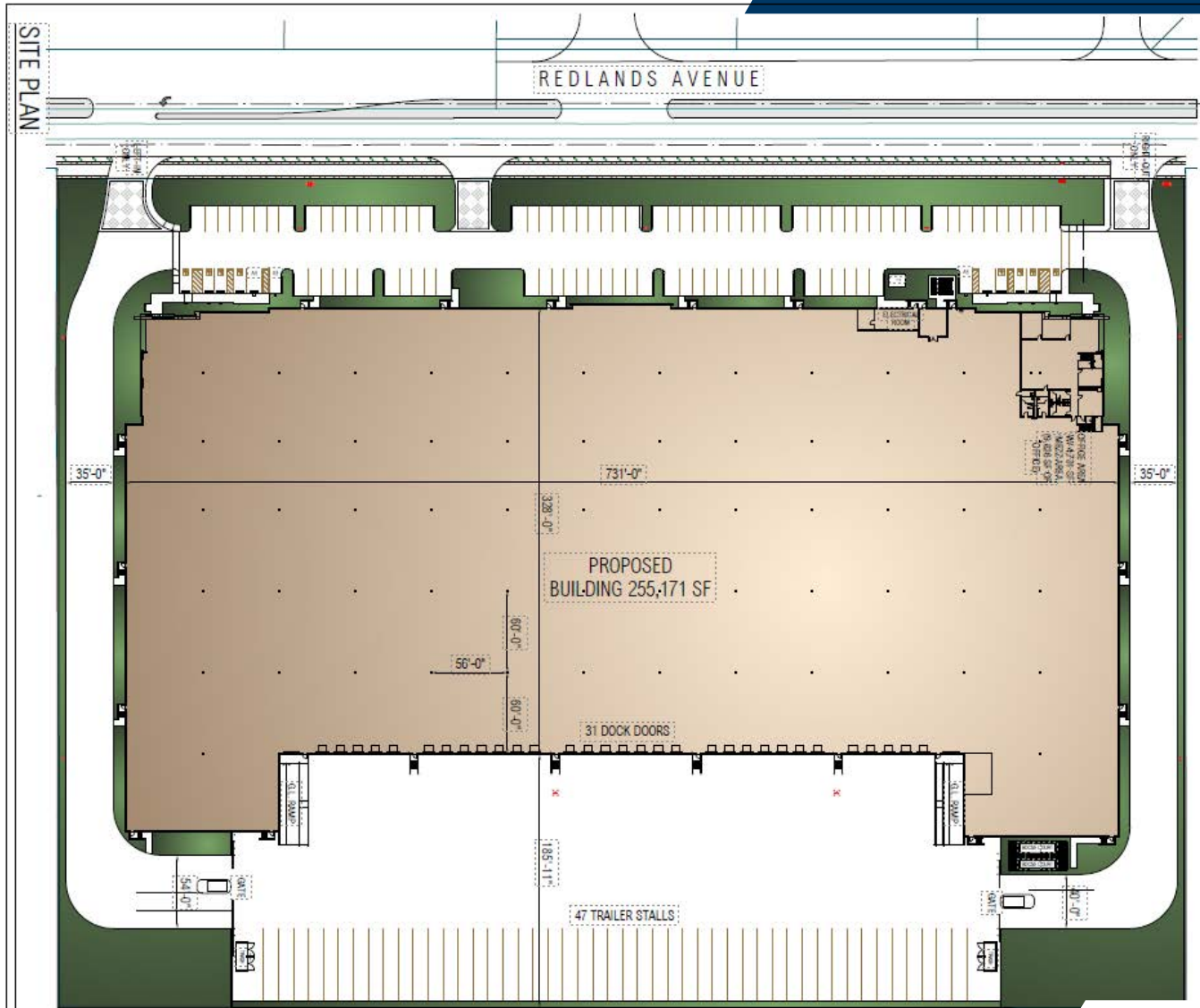


AVAILABLE FOR LEASE

REDLANDS EAST

PERRIS, CALIFORNIA

SITE PLAN



TAL SIGLAR, CCIM
909.942.4680
tal.siglar@cushwake.com
License 01229412

DANIEL WAHL
909.942.4651
daniel.wahl@cushwake.com
License 02053165

Proudly Owned by a Joint Venture Between

LAKE CREEK INDUSTRIAL LLC

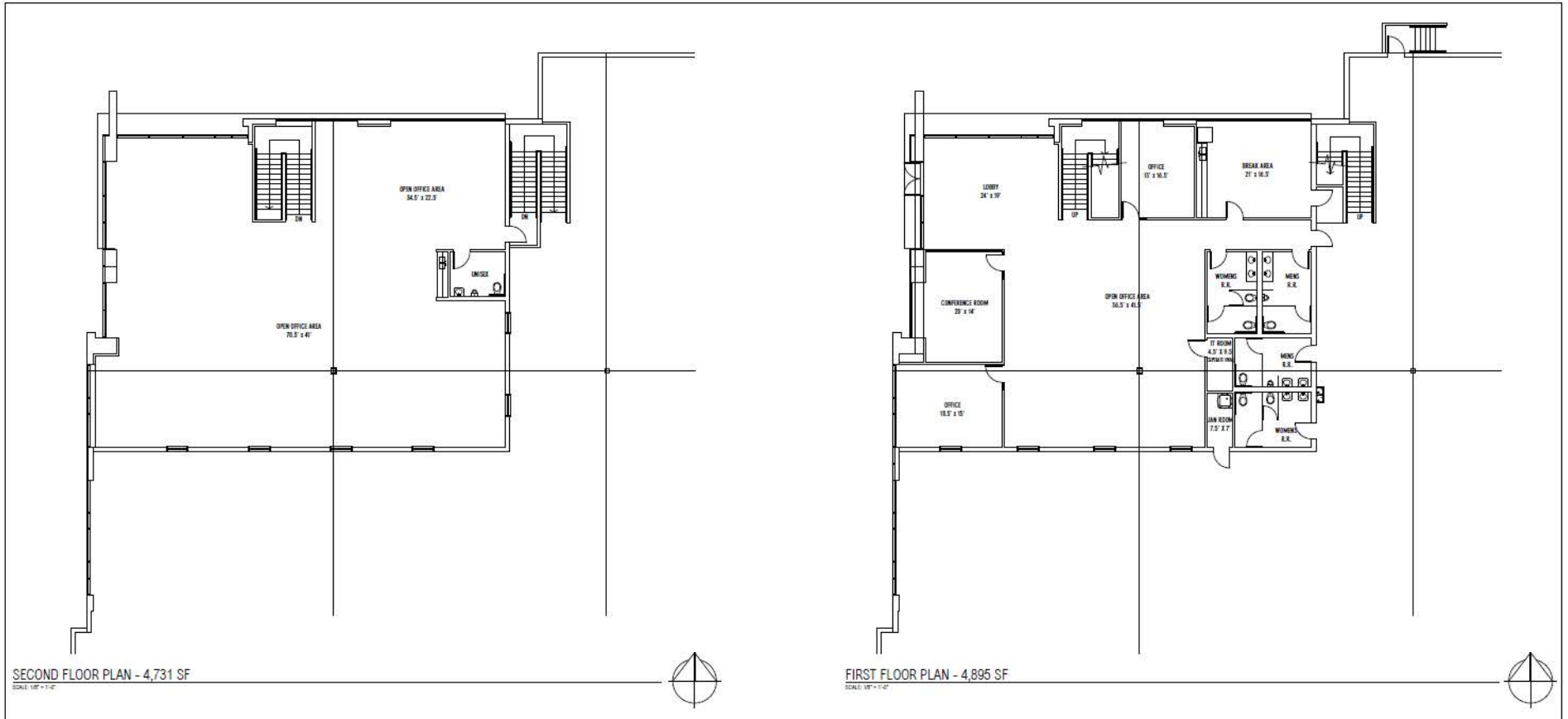


AVAILABLE FOR LEASE

REDLANDS EAST

PERRIS, CALIFORNIA

OFFICE PLAN



TAL SIGLAR, CCIM
909.942.4680
tal.siglar@cushwake.com
License 01229412

DANIEL WAHL
909.942.4651
daniel.wahl@cushwake.com
License 02053165

Proudly Owned by a Joint Venture Between

LAKE CREEK INDUSTRIAL LLC



AVAILABLE FOR LEASE

REDLANDS EAST

PERRIS, CALIFORNIA

SURROUNDING PROJECTS



TAL SIGLAR, CCIM
909.942.4680
tal.siglar@cushwake.com
License 01229412

DANIEL WAHL
909.942.4651
daniel.wahl@cushwake.com
License 02053165

Proudly Owned by a Joint Venture Between

LAKE CREEK INDUSTRIAL LLC

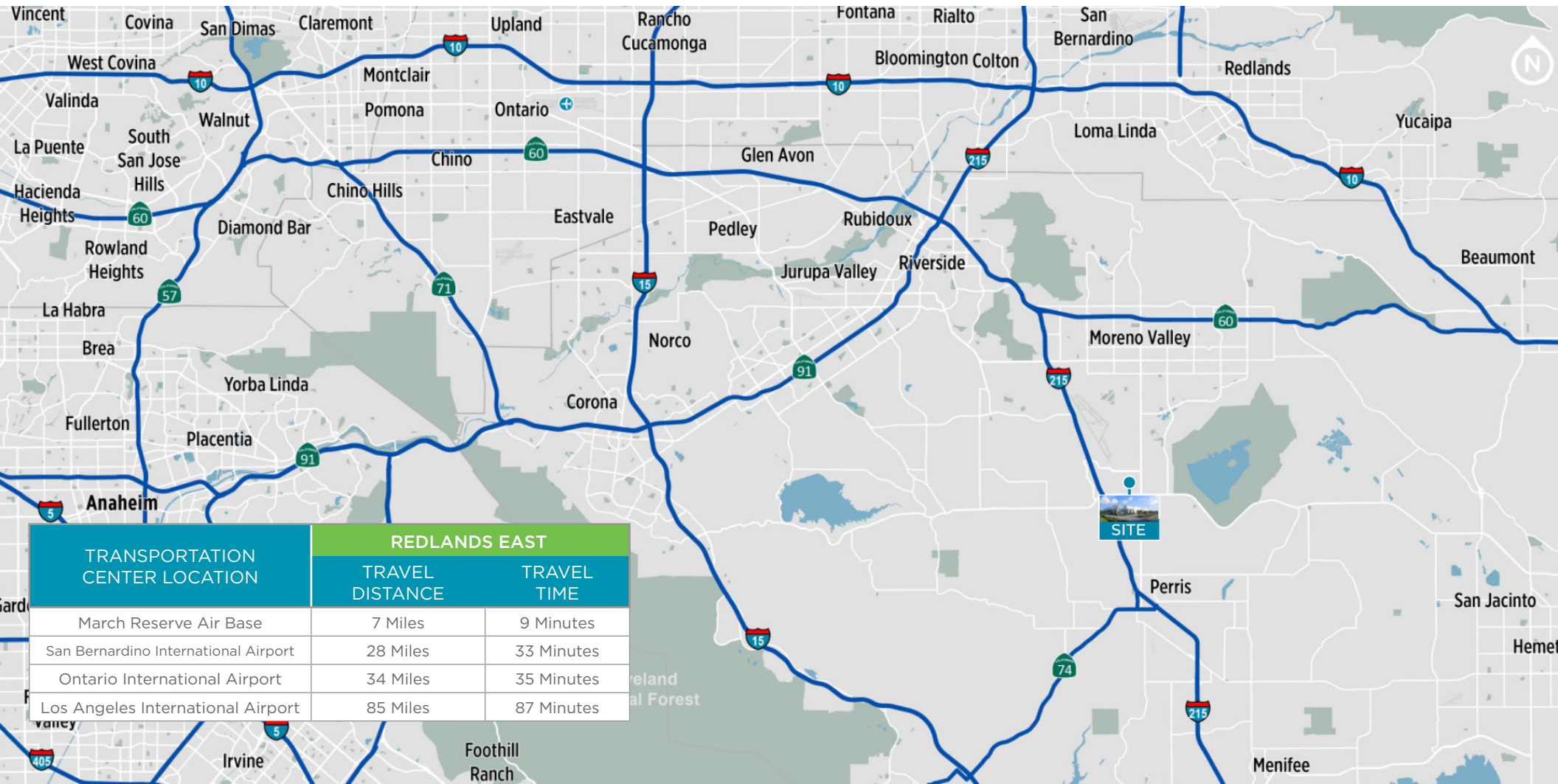


AVAILABLE FOR LEASE

REDLANDS EAST

PERRIS, CALIFORNIA

255,171 SF Industrial Building



TAL SIGLAR, CCIM
909.942.4680
tal.siglar@cushwake.com
License 01229412

DANIEL WAHL
909.942.4651
daniel.wahl@cushwake.com
License 02053165

Proudly Owned by a Joint Venture Between

LAKE CREEK INDUSTRIAL LLC

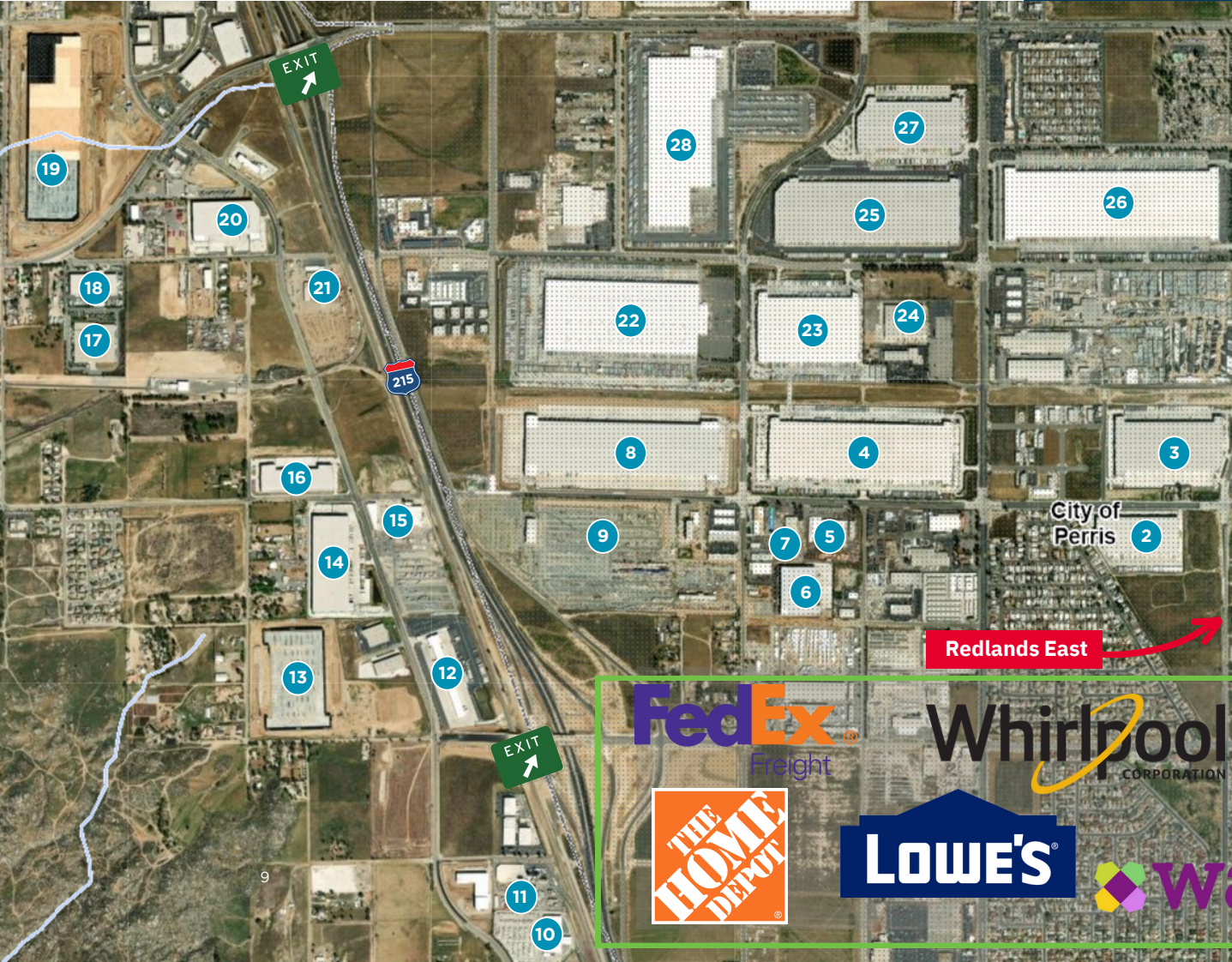


AVAILABLE FOR LEASE

REDLANDS EAST

PERRIS, CALIFORNIA

255,171 SF Industrial Building



Corporate Neighbors

| | | | |
|----|--------------------------|----|--------------------------------|
| 1 | NewAge Products | 11 | Star Milling Company |
| 2 | IDC Logistics | 12 | FedEx Freight |
| 3 | Sketchers | 13 | NFI Industries |
| 4 | Wayfair | 14 | American Standard |
| 5 | Inland Empire Truss | 15 | JM Eagle |
| 6 | GPA Logistics | 16 | KPower Global Logistics |
| 7 | J&B Materials | 17 | National Archives |
| 8 | Lecangs | 18 | Genesis Supreme RV |
| 9 | Ritchie Bros Auctioneers | 19 | Home Depot |
| 10 | El Dorado Stone | 20 | Zodiac Pool Systems |
| | | 21 | Builders First Source |
| | | 22 | Ross Stores |
| | | 23 | Wayfair |
| | | 24 | Building Material Distributors |
| | | 25 | NFI Industries |
| | | 26 | Whirlpool Corporation |
| | | 27 | Kenco Group |
| | | 28 | Lowe's Home Improvement |



TAL SIGLAR, CCIM
 909.942.4680
 tal.siglar@cushwake.com
 License 01229412

DANIEL WAHL
 909.942.4651
 daniel.wahl@cushwake.com
 License 02053165

Proudly Owned by a Joint Venture Between

LAKE CREEK INDUSTRIAL LLC





TAL SIGLAR, CCIM
909.942.4680
tal.siglar@cushwake.com
License 01229412

DANIEL WAHL
909.942.4651
daniel.wahl@cushwake.com
License 02053165

Proudly Owned by a Joint Venture Between



©2022 Cushman & Wakefield. All rights reserved. The information contained in this communication is strictly confidential. This information has been obtained from sources believed to be reliable but has not been verified. NO WARRANTY OR REPRESENTATION, EXPRESS OR IMPLIED, IS MADE AS TO THE CONDITION OF THE PROPERTY (OR PROPERTIES) REFERENCED HEREIN OR AS TO THE ACCURACY OR COMPLETENESS OF THE INFORMATION CONTAINED HEREIN, AND SAME IS SUBMITTED SUBJECT TO ERRORS, OMISSIONS, CHANGE OF PRICE, RENTAL OR OTHER CONDITIONS, WITHDRAWAL WITHOUT NOTICE, AND TO ANY SPECIAL LISTING CONDITIONS IMPOSED BY THE PROPERTY OWNER(S). ANY PROJECTIONS, OPINIONS OR ESTIMATES ARE SUBJECT TO UNCERTAINTY AND DO NOT SIGNIFY CURRENT OR FUTURE PROPERTY PERFORMANCE.