

# 6450 BINGLE ROAD

Single Tenant Building in Northwest Houston



FOR SUBLEASE

**60,486 SF**



**CUSHMAN &  
WAKEFIELD**



## PROPERTY FEATURES



60,486 SF



±10,000 SF



2,600 Amps



7 Dock-High Doors  
3 Semi-Dock Doors | 3 Ramps



Natural Gas



Sublease Expires  
December 2024



Sprinklered



Fenced Truck Court



Loading on Both Sides



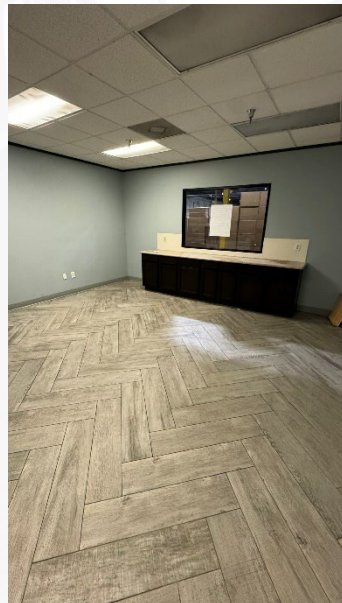
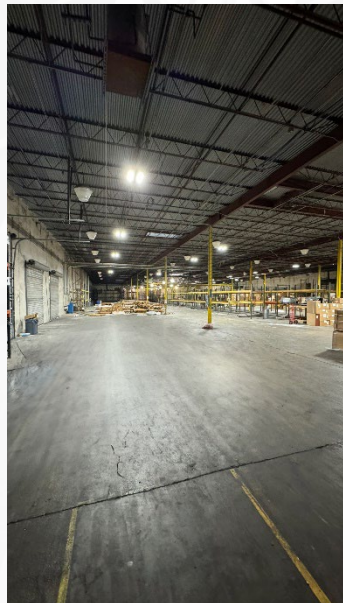
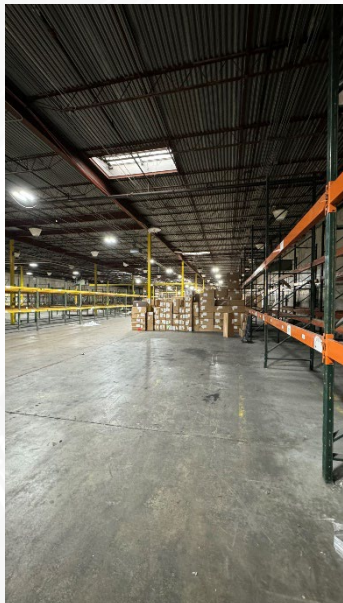
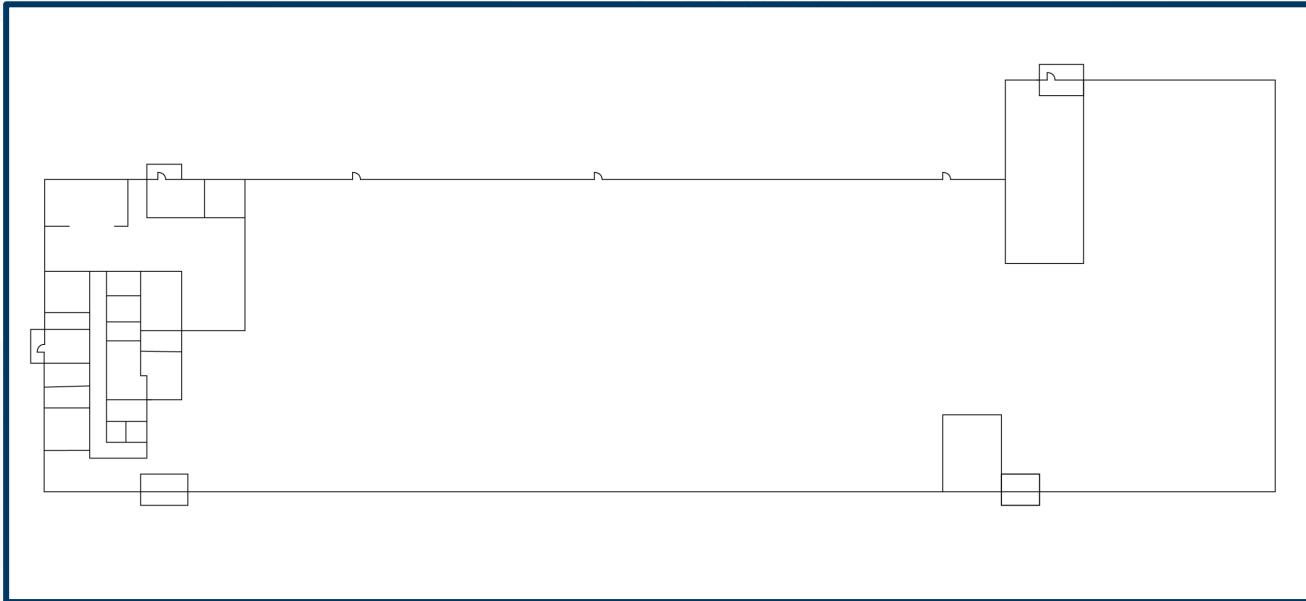
18' Clear



3.6 Acre Site

TOTAL SPACE

60,486 SF



# 6450 BINGLE ROAD

Single Tenant Building in Northwest Houston



// FOR MORE INFORMATION, PLEASE CONTACT:

**BEAU KALEEL**

Executive Managing Director

+1 713 963 2844

[beau.kaleel@cushwake.com](mailto:beau.kaleel@cushwake.com)

**IRYNA FALYK**

Senior Transaction Manager

+1 713 260 0226

[iryna.falyk@cushwake.com](mailto:iryna.falyk@cushwake.com)

