



DOWNTOWN BOISE OFFICES FOR LEASE



THE EAGLES CENTER BLDG.

223 North 6th Street
Boise, Idaho 83702

1,064 SF AVAILABLE

PROPERTY HIGHLIGHTS

Suite 428	1,064 SF - \$1,350/Month
Lease Type	Full Service Including Janitorial & Utilities
Building Size	30,000 SF ±
Parking	Surrounded by Street Parking & Public Garages
Zoning	City of Boise-C-5/HD/C
Parcel #	R1013002810
Lock Box	No, Spaces Shown by Appointment Only



JENNIFER MCENTEE

Senior Director
Office | Capital Markets
+1 208 287 9495
jennifer.mcentee@cushwake.com

BREE WELLS

Director
Office | Capital Markets
+1 208 287 9492
bree.wells@cushwake.com

BRAYDON TORRES

Associate
Office | Capital Markets
+1 208 207 9485
braydon.torres@cushwake.com

999 W MAN ST. SUITE 1300, BOISE, IDAHO 83702
WWW.CUSHWAKE.COM

©2024 Cushman & Wakefield. All rights reserved. The information contained in this communication is strictly confidential. This information has been obtained from sources believed to be reliable but has not been verified. No warranty or representation, express or implied, is made as to the condition of the property (or properties) referenced herein or as to the accuracy or completeness of the information contained herein, and same is submitted subject to errors, omissions, change of price, rental or other conditions, withdrawal without notice, and to any special listing conditions imposed by the property owner(s). Any projections, opinions or estimates are subject to uncertainty and do not signify current or future property performance.



THE EAGLES CENTER BLDG.

223 North 6th Street, Boise, Idaho 83702

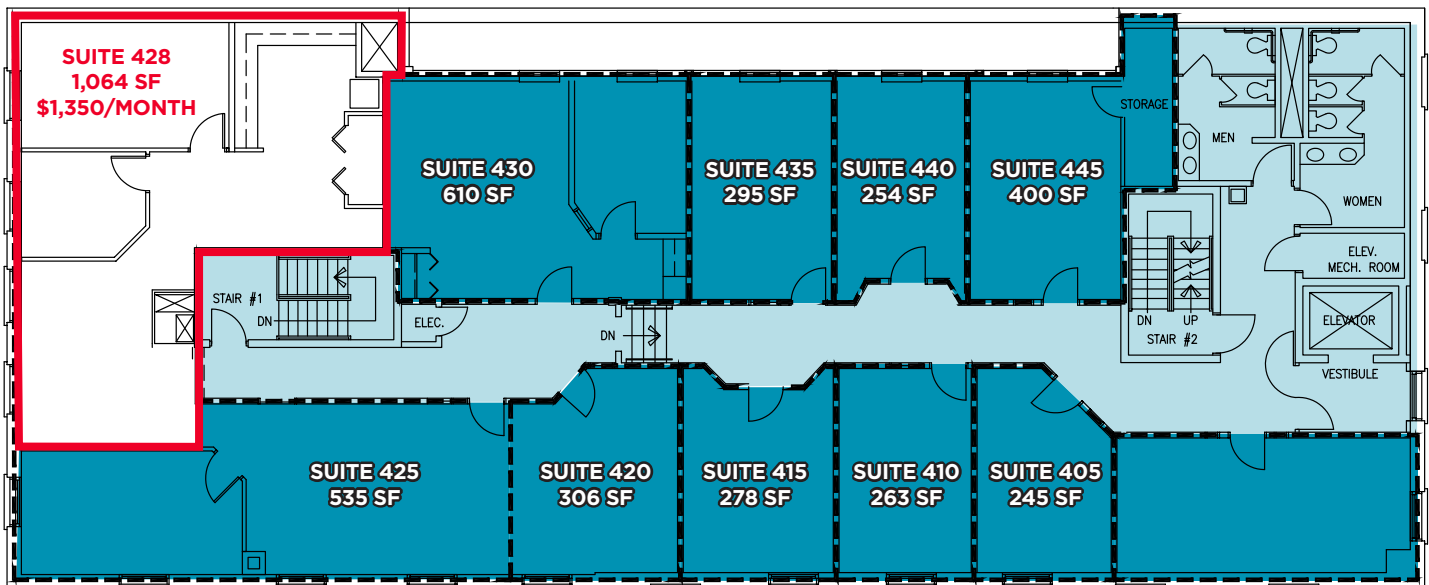
FOR LEASE - 1,064 SF



LISTING FEATURES

- Prime Downtown Boise Location at the Corner of 6th & Idaho
- Beautiful Historic Landmark Building
- Short Term Leases Available, Contact Agent for Details
- Existing Tenants Include Java Coffee & Spa Urbana
- Spaces & Lobby Area are Newly Remodeled
- Secure Building with After Hours Access
- Full Service Lease Including Janitorial & Utilities
- Tenants are Allowed Access to a Shared Conference Room
- Space Showings By Appointment Only, Contact Agent: Jennifer McEntee

FOURTH FLOOR

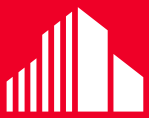


JENNIFER MCENTEE
Senior Director
Office | Capital Markets
+1 208 287 9495
jennifer.mcentee@cushwake.com

BREE WELLS
Director
Office | Capital Markets
+1 208 287 9492
bree.wells@cushwake.com

BRAYDON TORRES
Associate
Office | Capital Markets
+1 208 207 9485
braydon.torres@cushwake.com

999 W Main Street, Ste 1300
Boise, Idaho 83702
Main +1 208 287 9500
Fax +1 208 287 9501
cushmanwakefield.com



**CUSHMAN &
WAKEFIELD**

THE EAGLES CENTER BLDG.

223 North 6th Street, Boise, Idaho 83702

FOR LEASE - 1,064 SF



LISTING PHOTOS



JENNIFER MCENTEE

Senior Director
Office | Capital Markets
+1 208 287 9495
jennifer.mcentee@cushwake.com

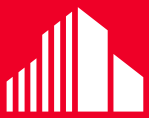
BREE WELLS

Director
Office | Capital Markets
+1 208 287 9492
bree.wells@cushwake.com

BRAYDON TORRES

Associate
Office | Capital Markets
+1 208 207 9485
braydon.torres@cushwake.com

999 W Main Street, Ste 1300
Boise, Idaho 83702
Main +1 208 287 9500
Fax +1 208 287 9501
cushmanwakefield.com



**CUSHMAN &
WAKEFIELD**

THE EAGLES CENTER BLDG.

223 North 6th Street, Boise, Idaho 83702

FOR LEASE - 1,064 SF



SURROUNDING AMENITIES



Restaurants in Close Proximity

- The Melting Pot
- Flatbread Pizzeria
- Jimmy John's Sandwiches
- Fork
- Bardenay
- Reef

JENNIFER MCENTEE

Senior Director
Office | Capital Markets
+1 208 287 9495
jennifer.mcentee@cushwake.com

BREE WELLS

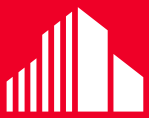
Director
Office | Capital Markets
+1 208 287 9492
bree.wells@cushwake.com

BRAYDON TORRES

Associate
Office | Capital Markets
+1 208 207 9485
braydon.torres@cushwake.com

999 W Main Street, Ste 1300

Boise, Idaho 83702
Main +1 208 287 9500
Fax +1 208 287 9501
cushmanwakefield.com



**CUSHMAN &
WAKEFIELD**

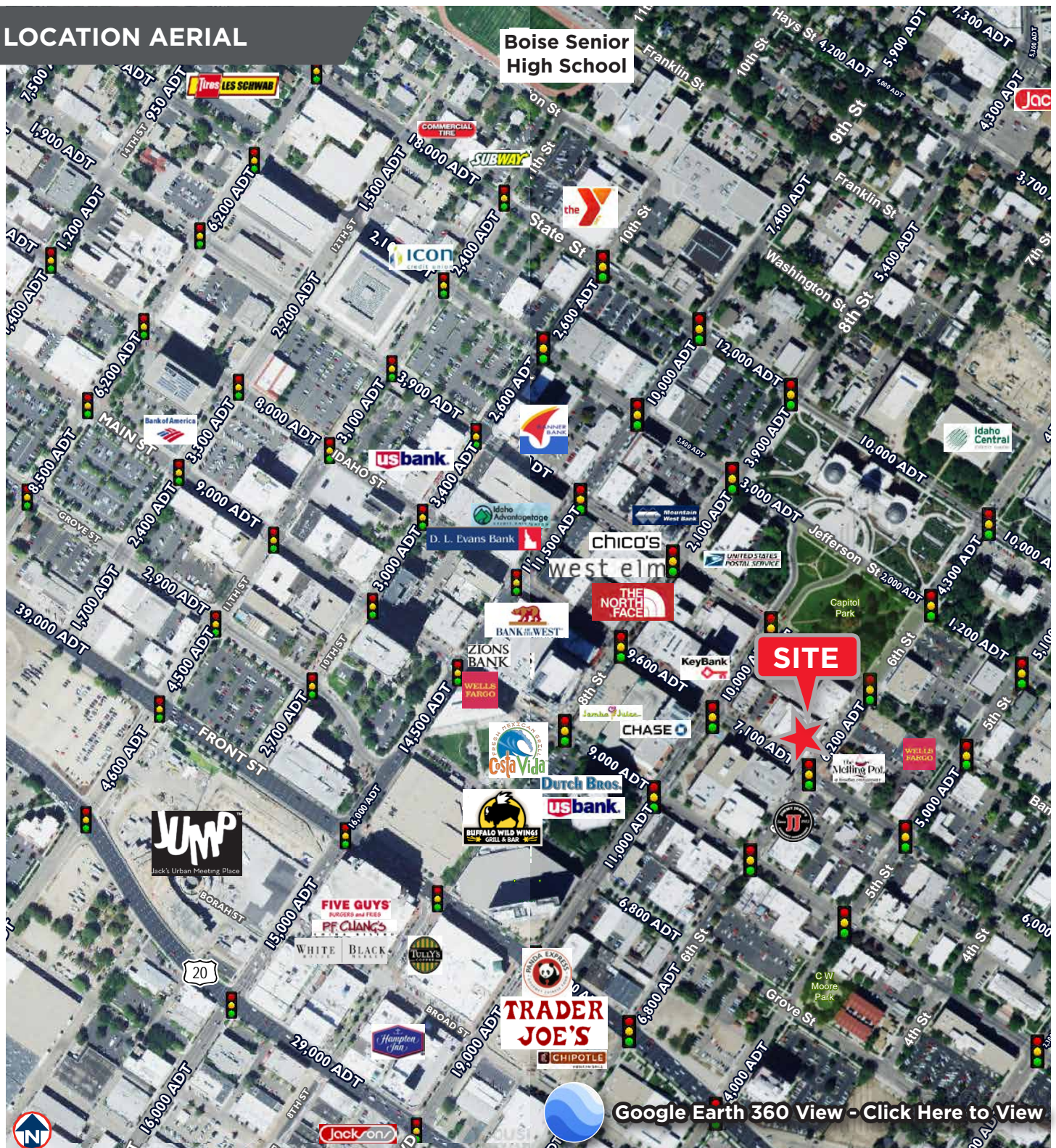
THE EAGLES CENTER BLDG.

223 North 6th Street, Boise, Idaho 83702

FOR LEASE - 1,064 SF



LOCATION AERIAL



THE EAGLES CENTER BUILDING

223 North 6th Street, Boise, Idaho 83702

FOR LEASE - 1,064 SF

