

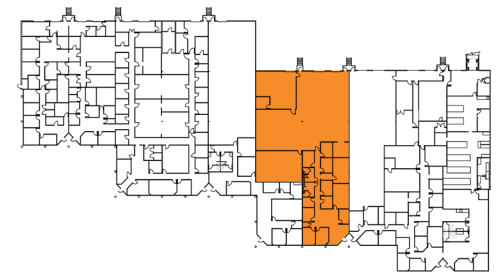
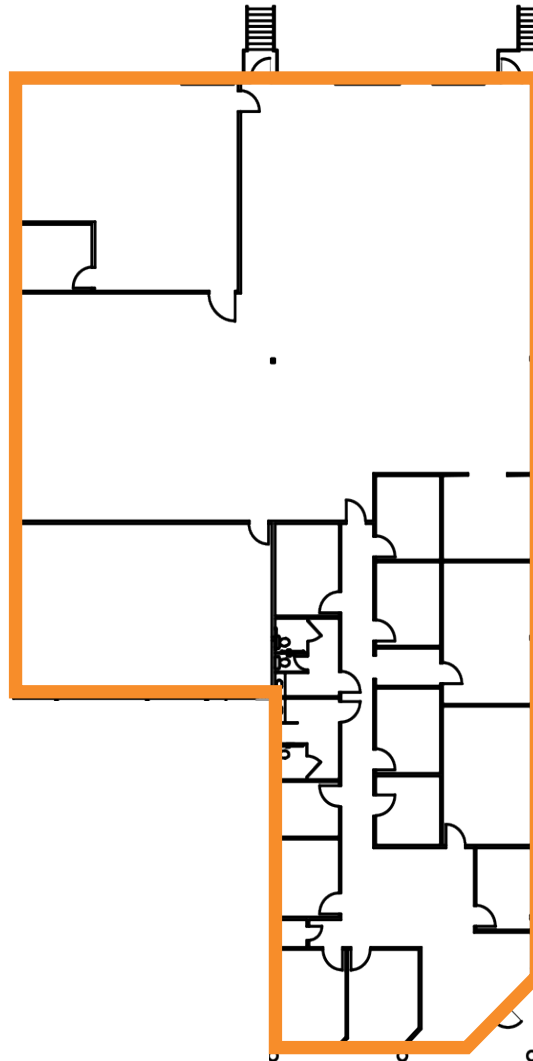


**BUILDING 3**  
120 Southcenter Court, Morrisville

**9,195 SF | Suite 400**

**SPECIFICATIONS**

Building Size	80,390 SF
Clear Height	18'
Disconnect Amp	200.00
Existing Usage	57.76 kVA
HVAC	4 units totaling 20 tons



©2022 Cushman & Wakefield. All rights reserved. The information contained in this communication is strictly confidential. This information has been obtained from sources believed to be reliable but has not been verified. NO WARRANTY OR REPRESENTATION, EXPRESS OR IMPLIED, IS MADE AS TO THE CONDITION OF THE PROPERTY (OR PROPERTIES) REFERENCED HEREIN OR AS TO THE ACCURACY OR COMPLETENESS OF THE INFORMATION CONTAINED HEREIN, AND SAME IS SUBMITTED SUBJECT TO ERRORS, OMISSIONS, CHANGE OF PRICE, RENTAL OR OTHER CONDITIONS, WITHDRAWAL WITHOUT NOTICE, AND TO ANY SPECIAL LISTING CONDITIONS IMPOSED BY THE PROPERTY OWNER(S). ANY PROJECTIONS, OPINIONS OR ESTIMATES ARE SUBJECT TO UNCERTAINTY AND DO NOT SIGNIFY CURRENT OR FUTURE PROPERTY PERFORMANCE.

**DOUG COOK**  
Senior Director  
doug.cook@cushwake.com  
+1 919 439 5158

**SUZANNA NICHOLS**  
Associate  
suzanna.nichols@cushwake.com  
+1 919 306 2275