

125 E SIR FRANCIS DRAKE

CREATIVE OFFICE SPACE FOR SUBLEASE

± 8,415 RSF AVAILABLE



Trevor Buck
Executive Managing Director
+1 415 451 2436
trevor.buck@cushwake.com
Lic #: 01255462

Whitney Strotz
Executive Managing Director
+1 415 451 2406
whitney.strotz@cushwake.com
Lic #: 01351397

900 Larkspur Circle
Suite 295
Larkspur, CA 94939
cushmanwakefield.com



Views of Mt. Tam
and The Bay



Walking distance
to SMART train,
ferry, and Marin
Country Mart



On-site parking



Easy access to
580 and 101



Waterfront
location



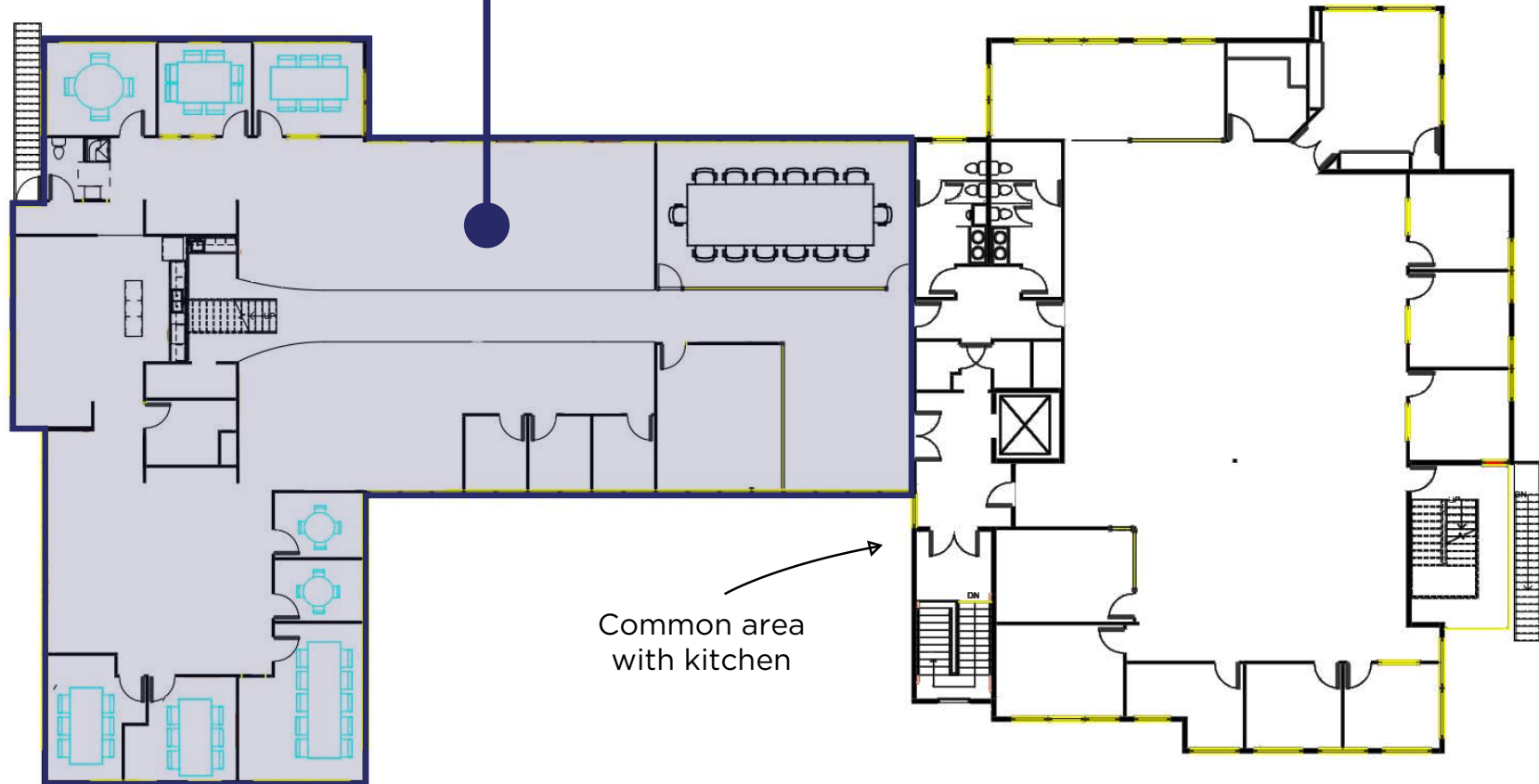
Exterior
event/tenant
space

Trevor Buck
Executive Managing Director
+1 415 451 2436
trevor.buck@cushwake.com
Lic #: 01255462

Whitney Strotz
Executive Managing Director
+1 415 451 2406
whitney.strotz@cushwake.com
Lic #: 01351397

900 Larkspur Circle
Suite 295
Larkspur, CA 94939
cushmanwakefield.com

SUITE 300:
± 8,415 SF



- Sublease term until 11/30/2026
- Mix of private offices, conference rooms, open work area
- 3rd Floor with elevator and stair access

- For sublease- flexible term, ready to go
- Professional finishes
- Views of Mt. Tam and Bay

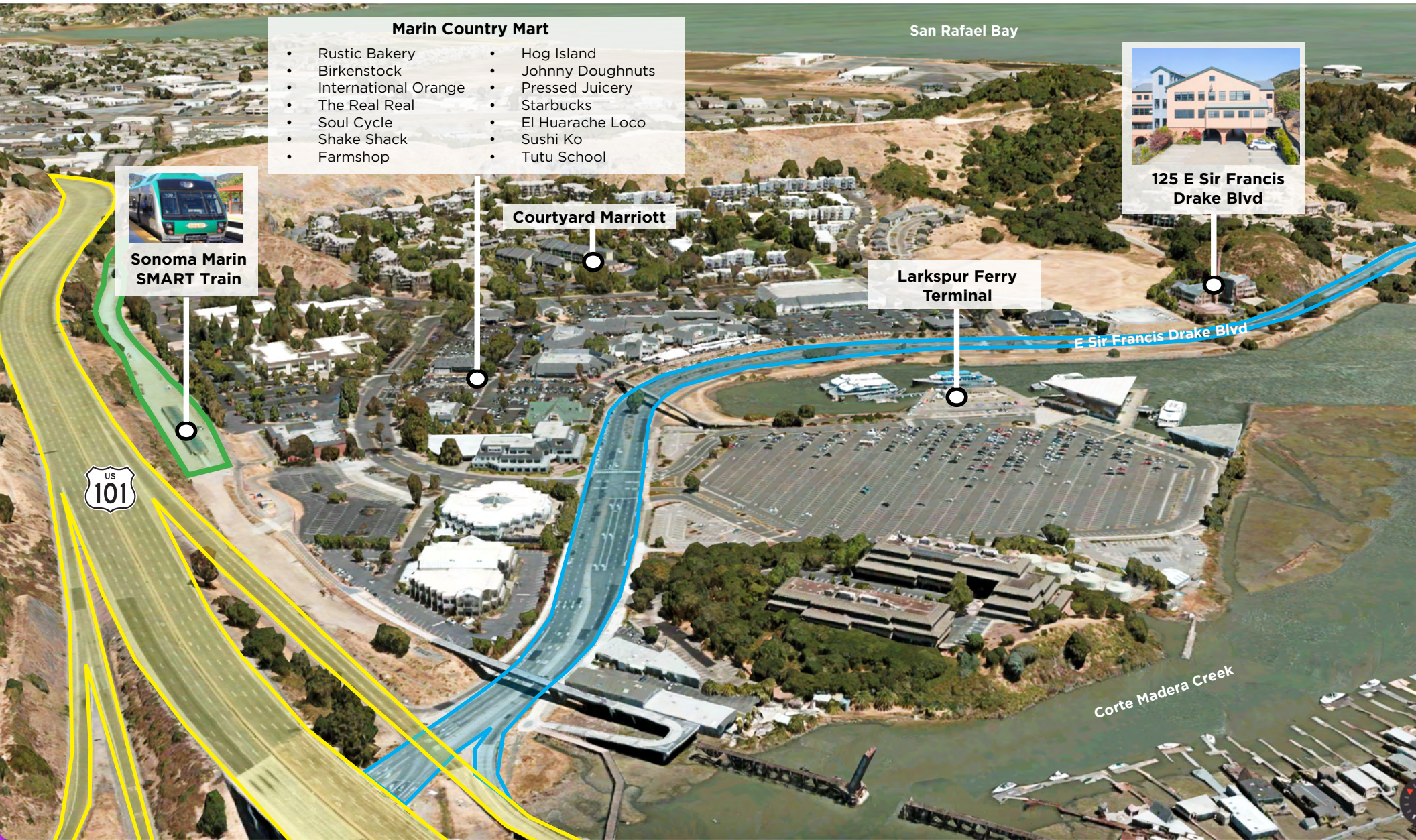
SUITE 300



Loft Area



Full Kitchen



Marin Country Mart

- Rustic Bakery
- Birkenstock
- International Orange
- The Real Real
- Soul Cycle
- Shake Shack
- Farmshop
- Hog Island
- Johnny Doughnuts
- Pressed Juicery
- Starbucks
- El Huarache Loco
- Sushi Ko
- Tutu School

San Rafael Bay



125 E Sir Francis
Drake Blvd



Sonoma Marin
SMART Train

Courtyard Marriott

Larkspur Ferry
Terminal

E Sir Francis Drake Blvd



Corte Madera Creek

Trevor Buck
Executive Managing Director
+1 415 451 2436
trevor.buck@cushwake.com
Lic #: 01255462

Whitney Strotz
Executive Managing Director
+1 415 451 2406
whitney.strotz@cushwake.com
Lic #: 01351397

900 Larkspur Circle
Suite 295
Larkspur, CA 94939
cushmanwakefield.com

USABLE OUTDOOR TENANT SPACE



Larkspur Ferry
Terminal

Shared Outdoor
Deck Space

Trevor Buck
Executive Managing Director
+1 415 451 2436
trevor.buck@cushwake.com
Lic #: 01255462

Whitney Strotz
Executive Managing Director
+1 415 451 2406
whitney.strotz@cushwake.com
Lic #: 01351397

900 Larkspur Circle
Suite 295
Larkspur, CA 94939
cushmanwakefield.com

125 E SIR FRANCIS DRAKE FOR SUBLEASE



Trevor Buck
Executive Managing Director
+1 415 451 2436
trevor.buck@cushwake.com
Lic #: 01255462

Whitney Strotz
Executive Managing Director
+1 415 451 2406
whitney.strotz@cushwake.com
Lic #: 01351397

900 Larkspur Circle
Suite 295
Larkspur, CA 94939
cushmanwakefield.com