



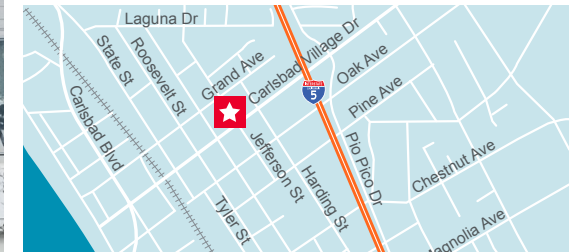
FOR LEASE

Jefferson Professional Building

2910 Jefferson Street, Carlsbad, CA 92008

Property Highlights

- 10,904 SF Professional Office Building
- Located in Downtown Carlsbad with very strong population and economic demographics
- Two-story, elevator served building
- On-street and subterranean parking
- Located west of Interstate 5 in the heart of Carlsbad Village
 - Walking distance to the village businesses, restaurants, shops, and the beach



For more information:

Owen Curry

+1 760 431 3830

owen.curry@cushwake.com

LIC #01972528

Peter Curry

+1 760 431 4238

peter.curry@cushwake.com

LIC #01241186

12830 El Camino Real, Suite 100

San Diego, CA 92130

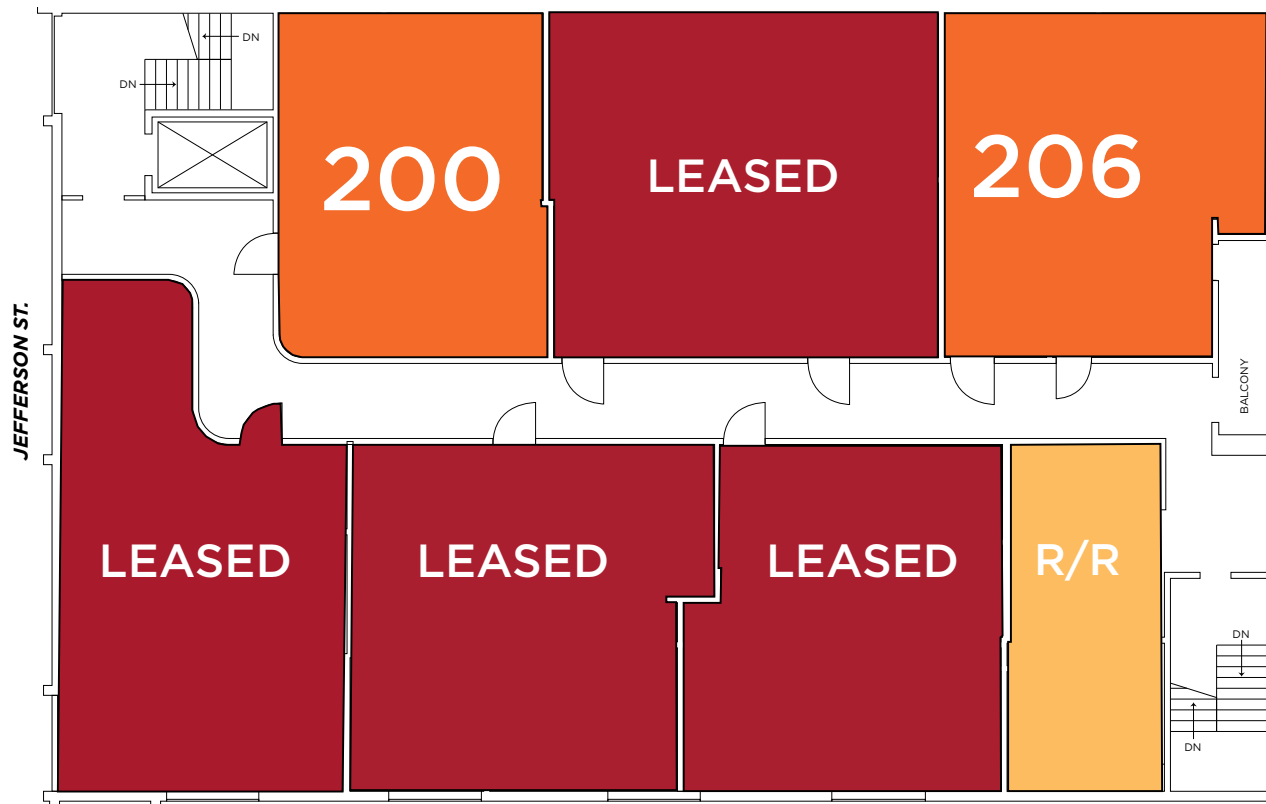
Tel +1 858 452 6500

cushmanwakefield.com

Jefferson Professional Building

2910 Jefferson Street, Carlsbad, CA 92008

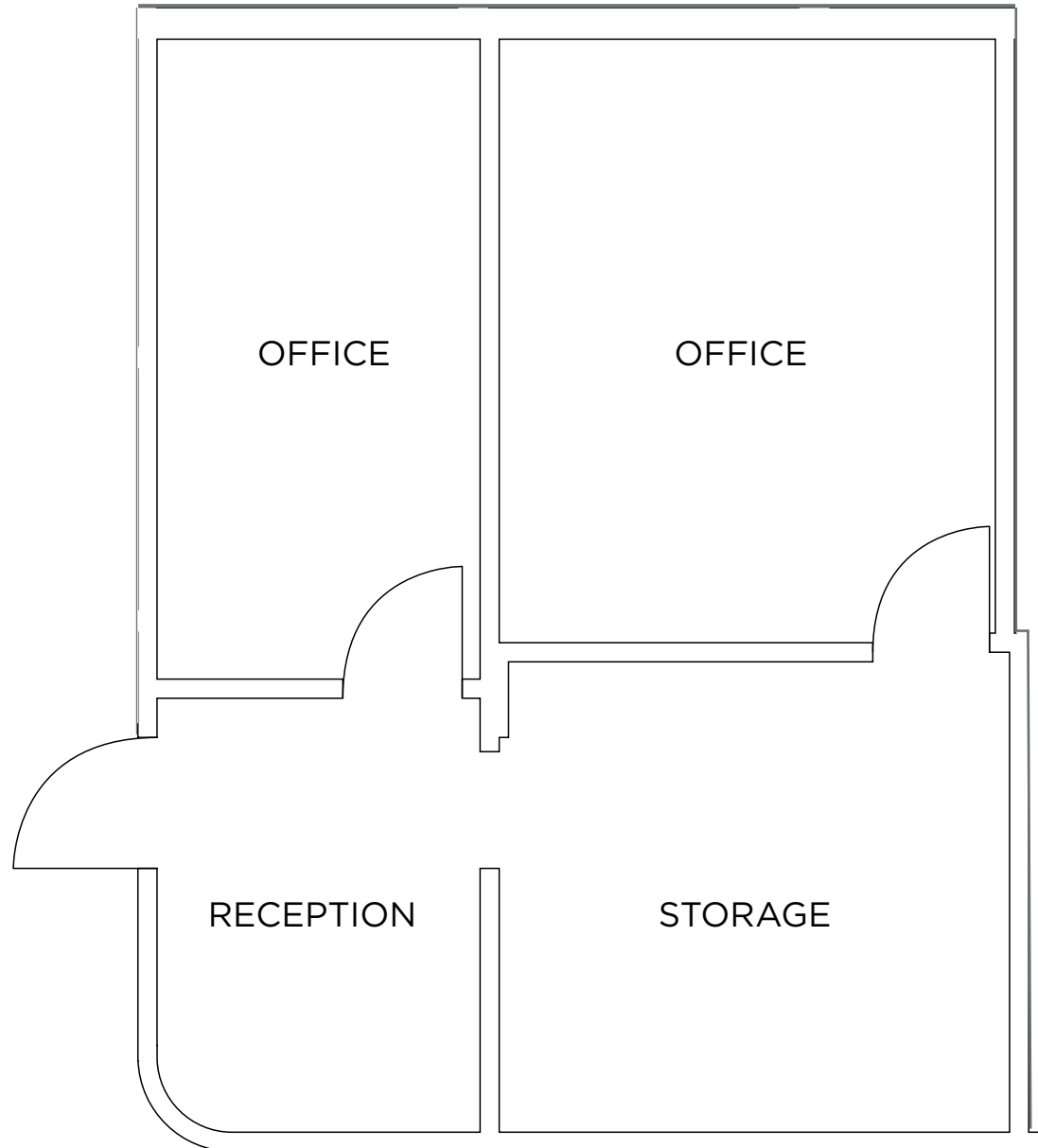
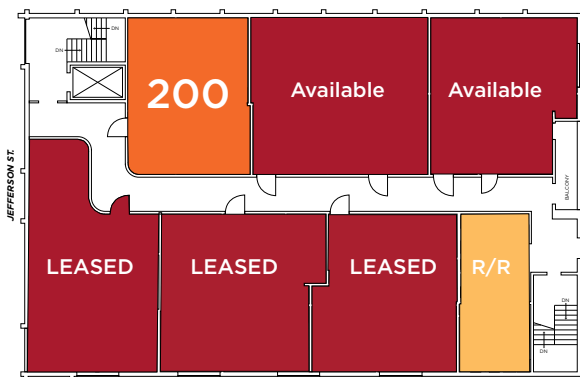
Suite	Size (RSF)	Date Available	Comments
200	816 - 1,031	Now	2 Private Offices, Reception Area, Storage Room, Kitchen with Dishwasher, Private Bathroom with shower
206	929	Now	2 Private Offices, Conference Room, Reception Area, Server Room, Small Kitchenette



Suite 200 (816 - 1,013 RSF)

Available Now

- 2 Private Offices
- Reception Area
- Storage Room
- Kitchen with Dishwasher
- Private bathroom with shower





FOR LEASE

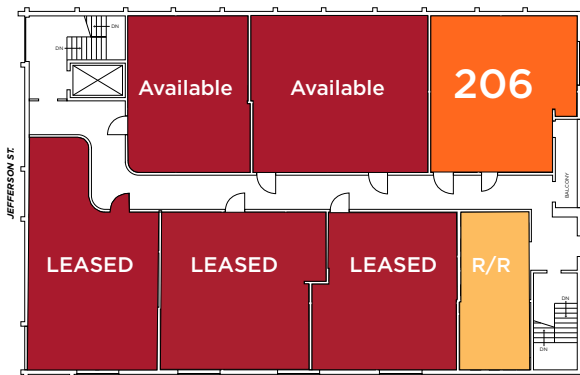
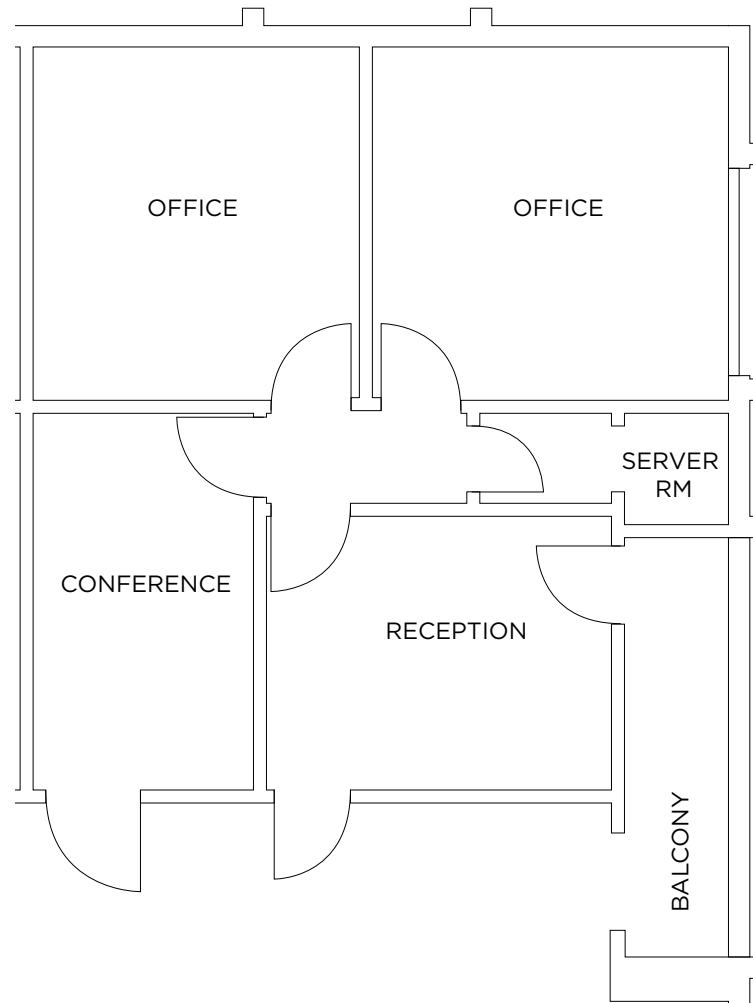
Jefferson Professional Building

2910 Jefferson Street, Carlsbad, CA 92008

Suite 206 (929 RSF)

Available Now

- 2 Private Offices
- Conference Room
- Reception Area
- Server Room
- Small Kitchenette





FOR LEASE

Jefferson Professional Building

2910 Jefferson Street, Carlsbad, CA 92008



Jefferson Professional Building

2910 Jefferson Street, Carlsbad, CA 92008

AMENITIES AERIAL

