

1190 SARATOGA AVENUE

±3,529 SF - ±9,204 SF FOR LEASE | FURNISHED OFFICE & LABS

Retirement
CAPITAL STRATEGIES

STEVE PACE
408.482.7037
steve.pace@cushwake.com
LIC #00817396

DAN HOLLINGSWORTH
408.615.3431
dan.hollingsworth@cushwake.com
LIC #01117716

TIANA DAMPIER
408.436.3680
tiana.dampier@cushwake.com
LIC #02191012



1190 SARATOGA AVENUE

±3,529 SF - ±9,204 SF

AVAILABLE NOW:

SUITE 200 ±9,204 SF (Divisible to ±3,529 SF)

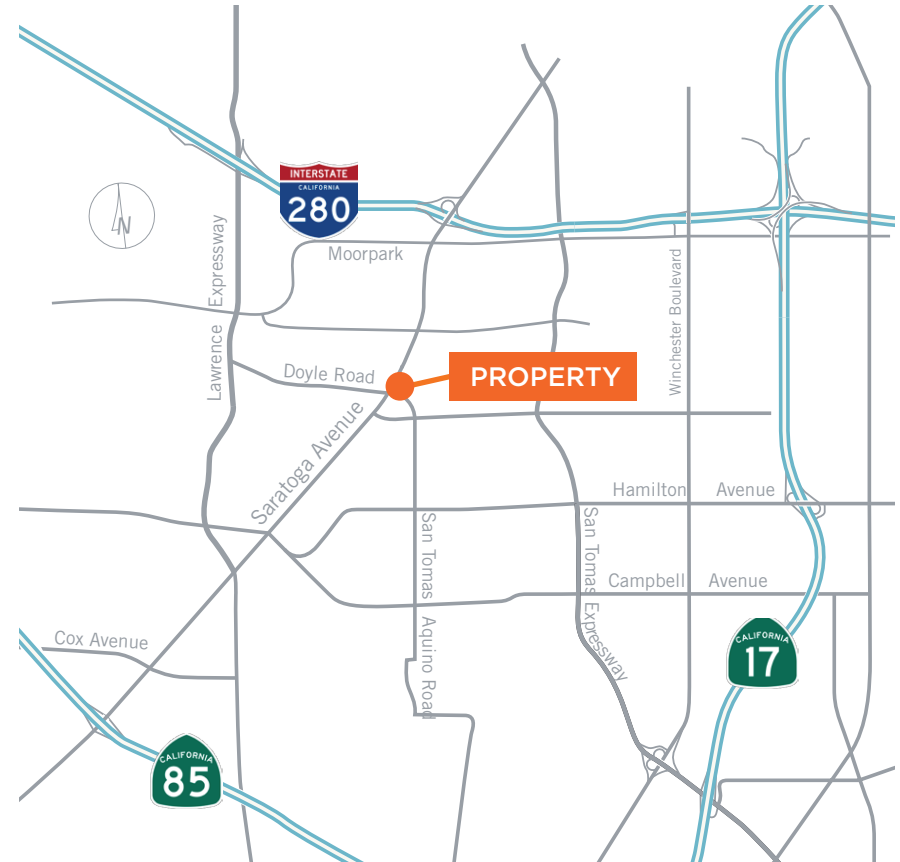
SUITE 210 ±6,893 SF Furnished Office & Labs

LOCATION HIGHLIGHTS

- Prominent Location with Excellent Identity
- Close Proximity to Restaurants / Hotels / Retail
- Immediate Access to Hwys. 280 & 85
- Conveniently Located Near Cupertino, Campbell & Saratoga

BUILDING HIGHLIGHTS

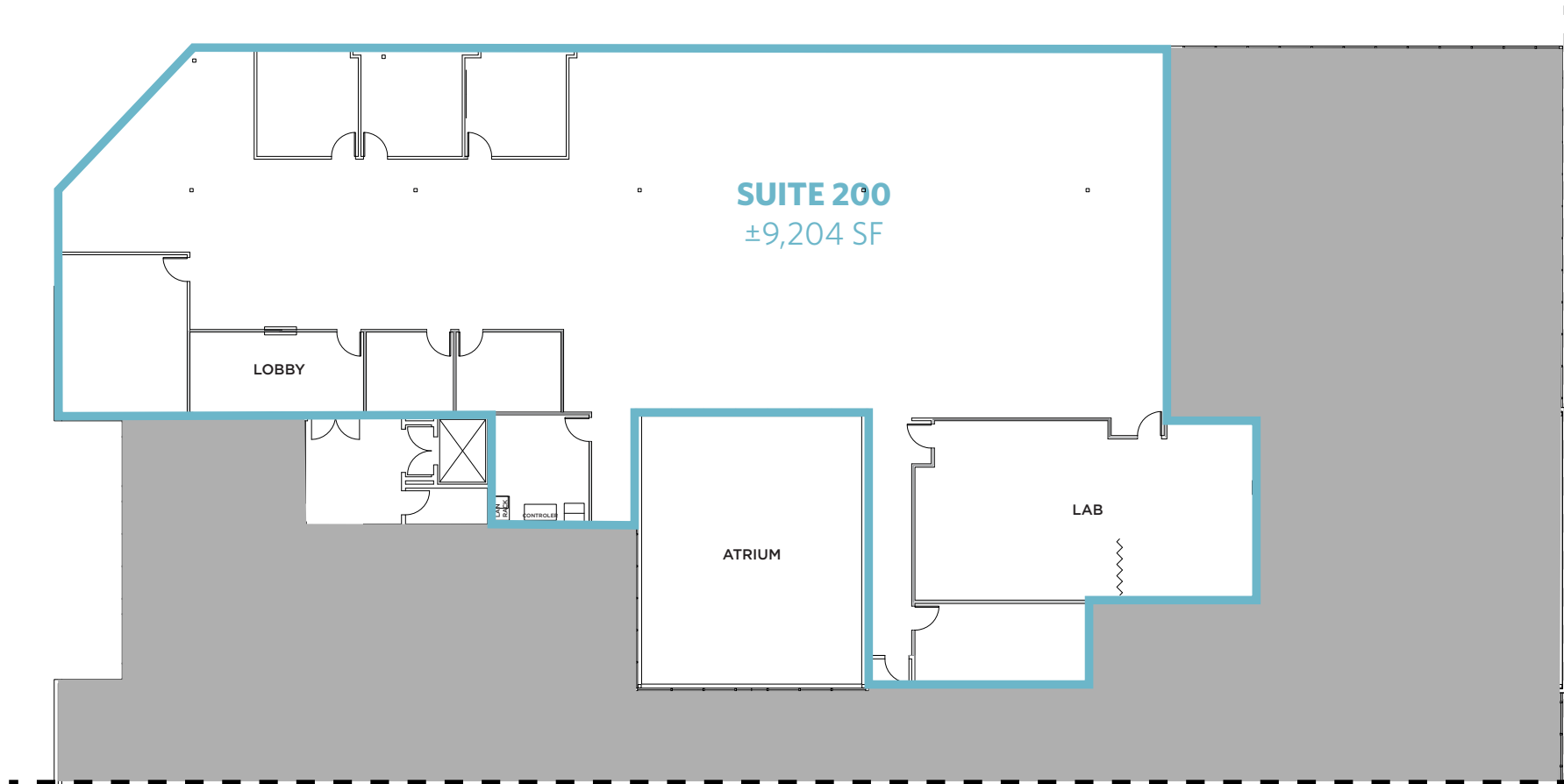
- Furnished Plug & Play
- Expansive Window Line
- Private & Open Offices, Conference Rooms & Labs
- Secure 4/1,000 Parking Directly Under Building
- Charming Atrium in Common Area



1190 SARATOGA AVENUE

SUITE 200 | $\pm 9,204$ SF (DIVISIBLE TO $\pm 3,529$ SF)

SECOND FLOOR

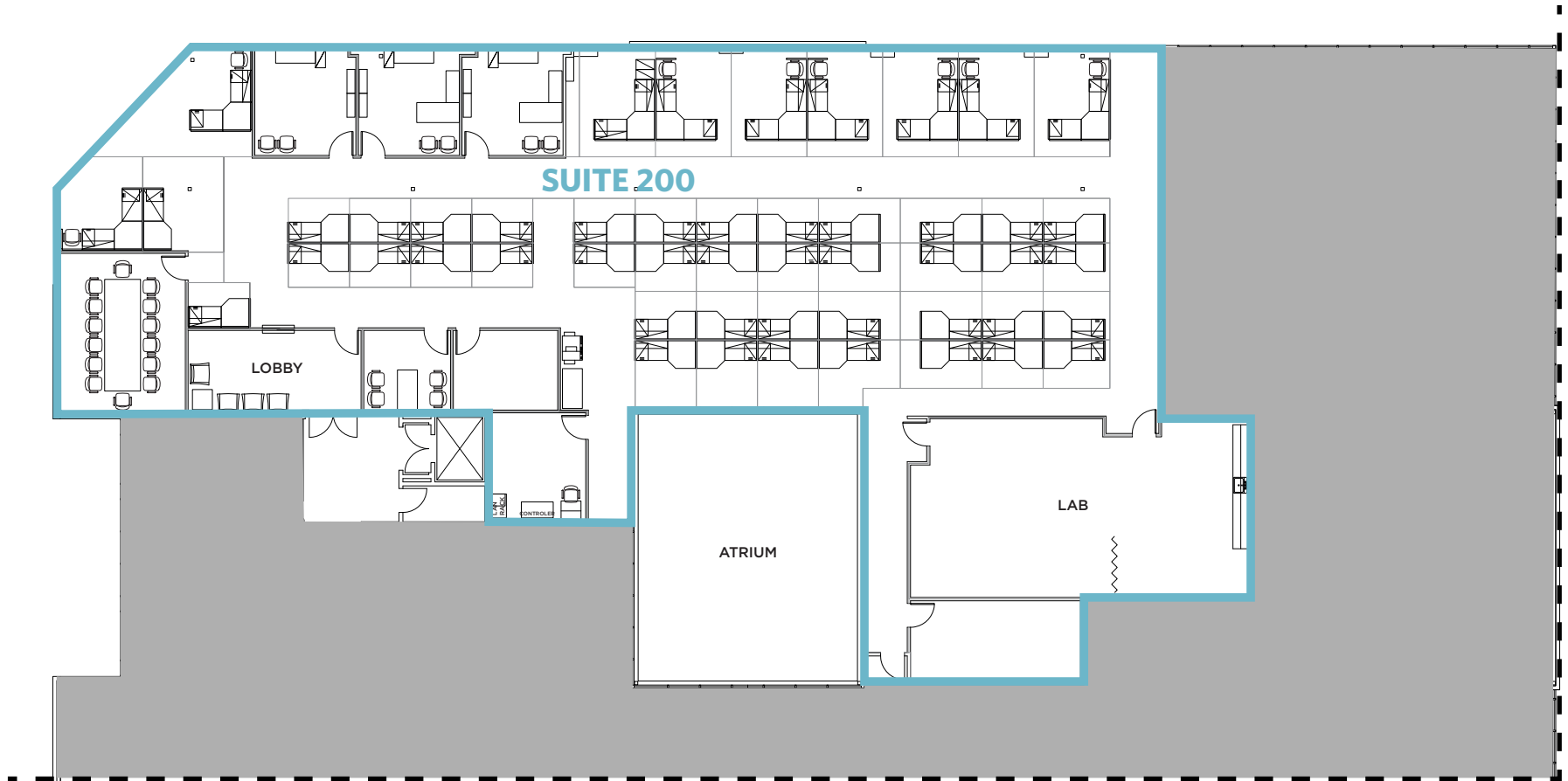


1190 SARATOGA AVENUE

SUITE 200 | ±9,204 SF

SECOND FLOOR

HYPOTHETICAL FURNITURE LAYOUT

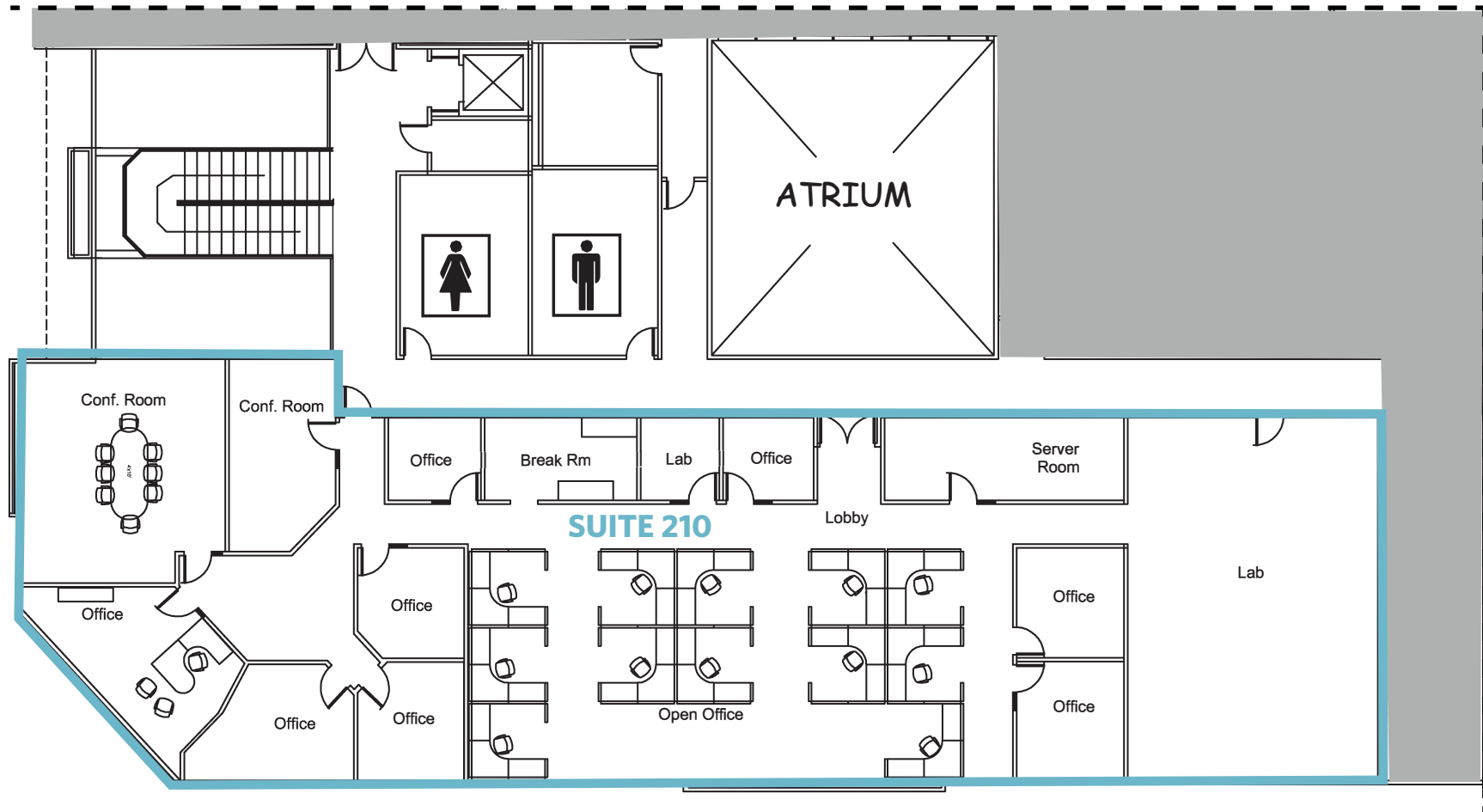


1190 SARATOGA AVENUE

SUITE 210 | ±6,893 SF

SECOND FLOOR

FURNISHED OFFICE & LABS



1190 SARATOGA AVENUE

±3,529 SF - ±9,204 SF

PHOTOS

