

85 SECOND

## 9,736 SQ FEET | 5TH FLOOR FOR SUBLEASE

- HIGH-END CREATIVE BUILDOUT
- PLUG & PLAY WITH 68 SIT-STAND WORKSTATIONS IN PLACE
- THROUGH JUNE 30, 2024

### JIM CHESLER

+1 415 677 0426  
jim.chesler@cushwake.com  
Lic. 01274224

### CHARLIE MOORE

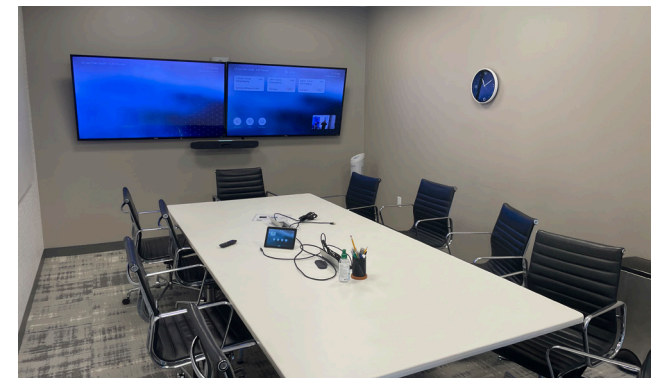
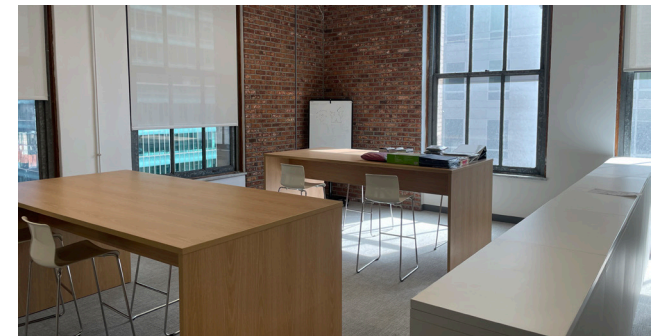
+1 415 677 0438  
charlie.moore@cushwake.com  
Lic. 01893023



# SUITE HIGHLIGHTS

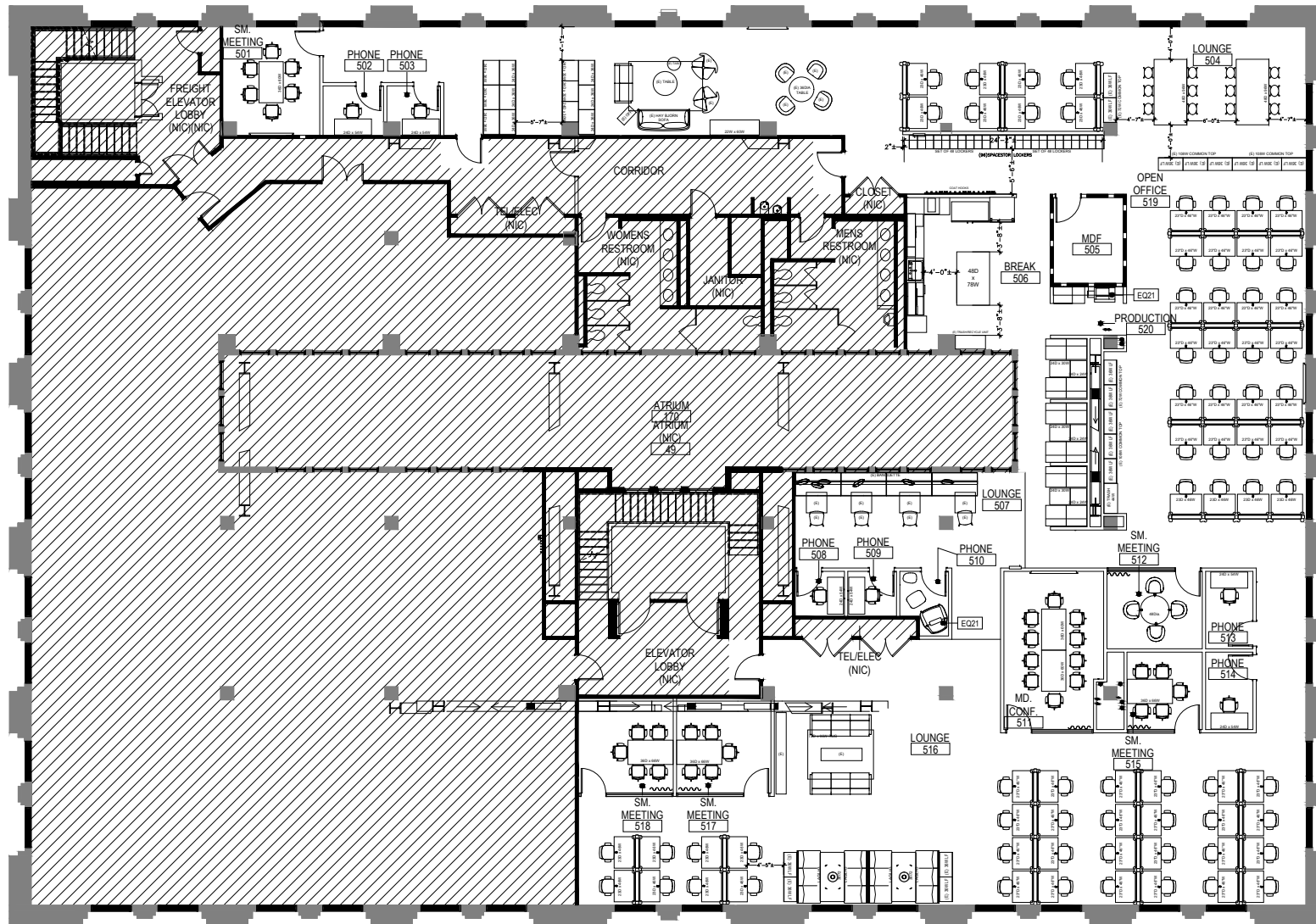
85 SECOND

- 68 Workstations
- 5 Small / Medium Conference Rooms
- 6 Phone Rooms
- 1 Board Room
- Wellness Room
- Kitchen / Break Area
- Multiple Collaboration Areas
- HVAC and Operable Windows
- Great Natural Light
- Available: Now
- Term: Through June 30, 2024
- *\* Longer Term Available - Through August 31, 2026*

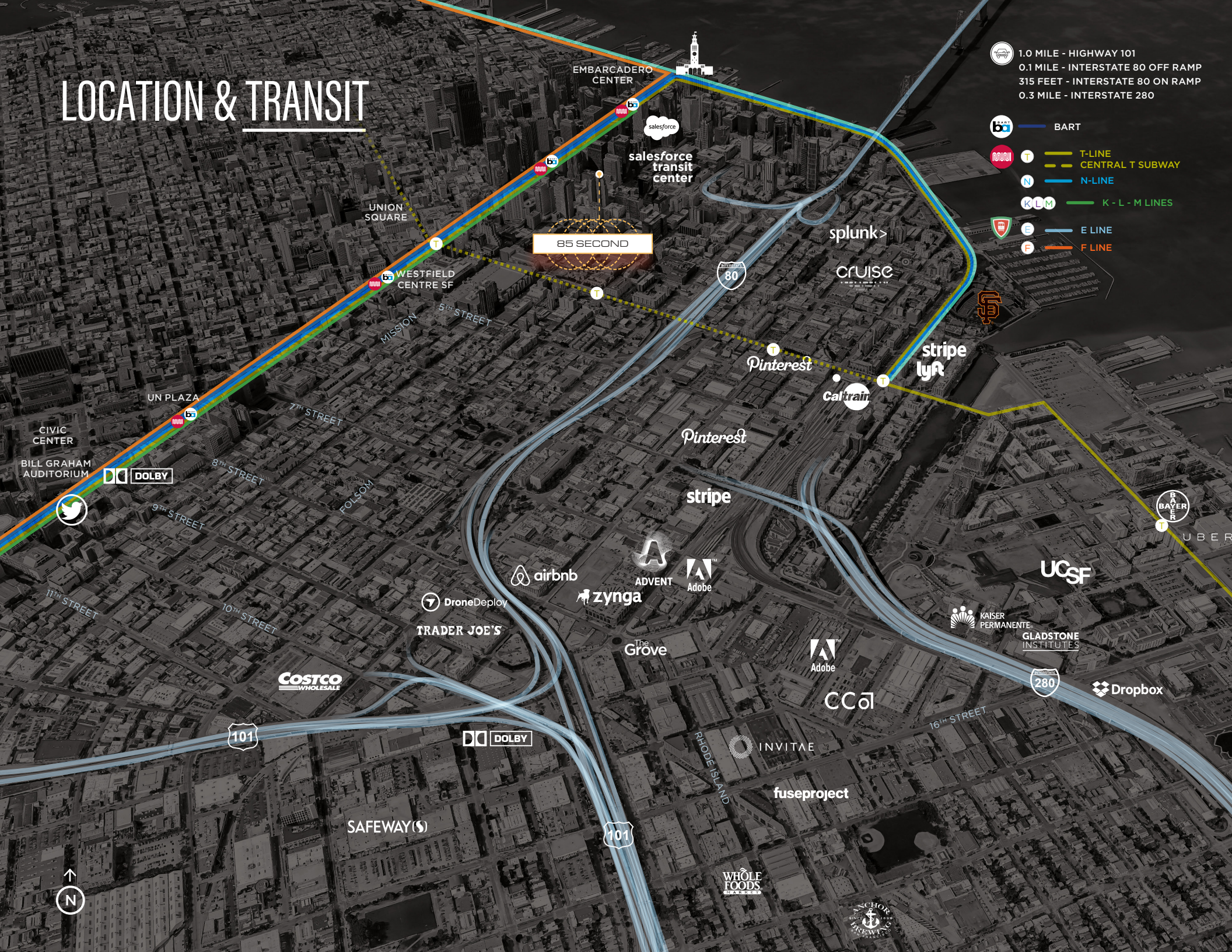


# FLOOR PLAN | 9,736 RSF

85 SECOND



# LOCATION & TRANSIT



- 1.0 MILE - HIGHWAY 101
- 0.1 MILE - INTERSTATE 80 OFF RAMP
- 315 FEET - INTERSTATE 80 ON RAMP
- 0.3 MILE - INTERSTATE 280

- BART
- T-LINE
- CENTRAL T SUBWAY
- N-LINE
- K - L - M LINES
- E LINE
- F LINE

85 SECOND

BILL GRAHAM AUDITORIUM

UN PLAZA

UNION SQUARE

WESTFIELD CENTRE SF

EMBARCADERO CENTER

salesforce transit center

splunk

CRUISE

Pinterest

stripe lyft

Caltrain

Pinterest

stripe

airbnb

zynga

ADVENT

Adobe

DroneDeploy

TRADER JOE'S

The Grove

Adobe

CCO

UCSF

KAISER PERMANENTE

GLADSTONE INSTITUTES

Dropbox

COSTCO WHOLESALE

DOLBY

INVITAE

fuseproject

SAFeway(S)

WHOLE FOODS

SCHOR BREWING





85 SECOND

**JIM CHESLER**

+1 415 677 0426  
jim.chesler@cushwake.com  
Lic. 01274224

**CHARLIE MOORE**

+1 415 677 0438  
charlie.moore@cushwake.com  
Lic. 01893023

