

11,523 SF AVAILABLE  
**466-488 DIENS DRIVE**  
UNIT 476 | WHEELING IL



**UNDER NEW OWNERSHIP**

## PROPERTY HIGHLIGHTS



Lease Rate: \$12.00 PSF Modified Gross



Available September 1st

### PROPERTY FEATURES

Building Size: 57,283 SF

Space Available: 11,523 SF

Year Built: 1987

Clear Height: 17'

Exterior Docks: 2 (Shared)

Drive-in Door: 1

Parking: 22 Cars

Marc Samuels  
Director  
+1 847 720 1368  
marc.samuels@cushwake.com

Keith Puritz  
Vice Chair  
+1 847 720 1366  
keith.puritz@cushwake.com

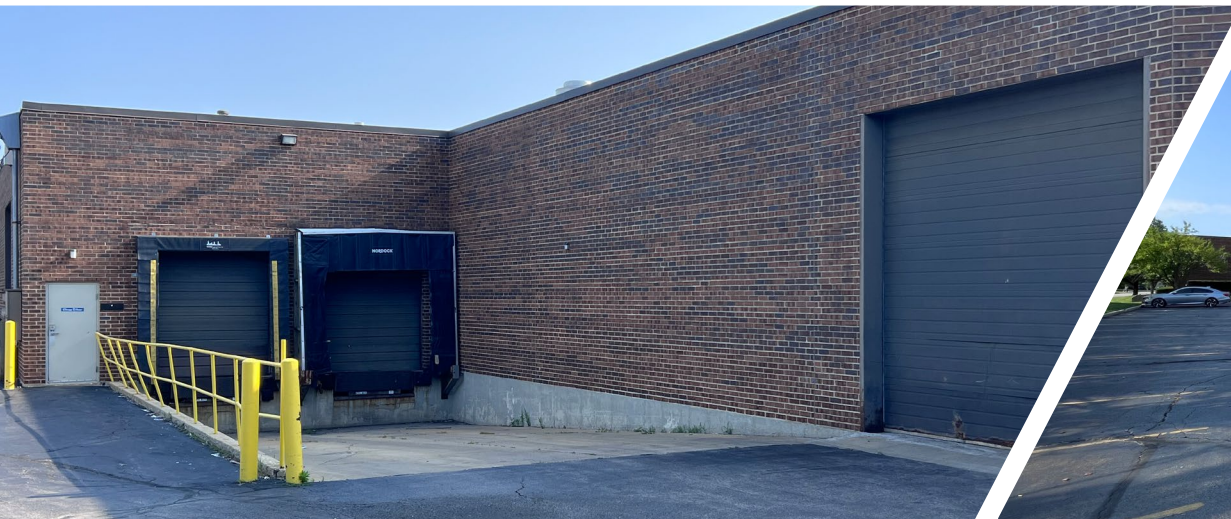
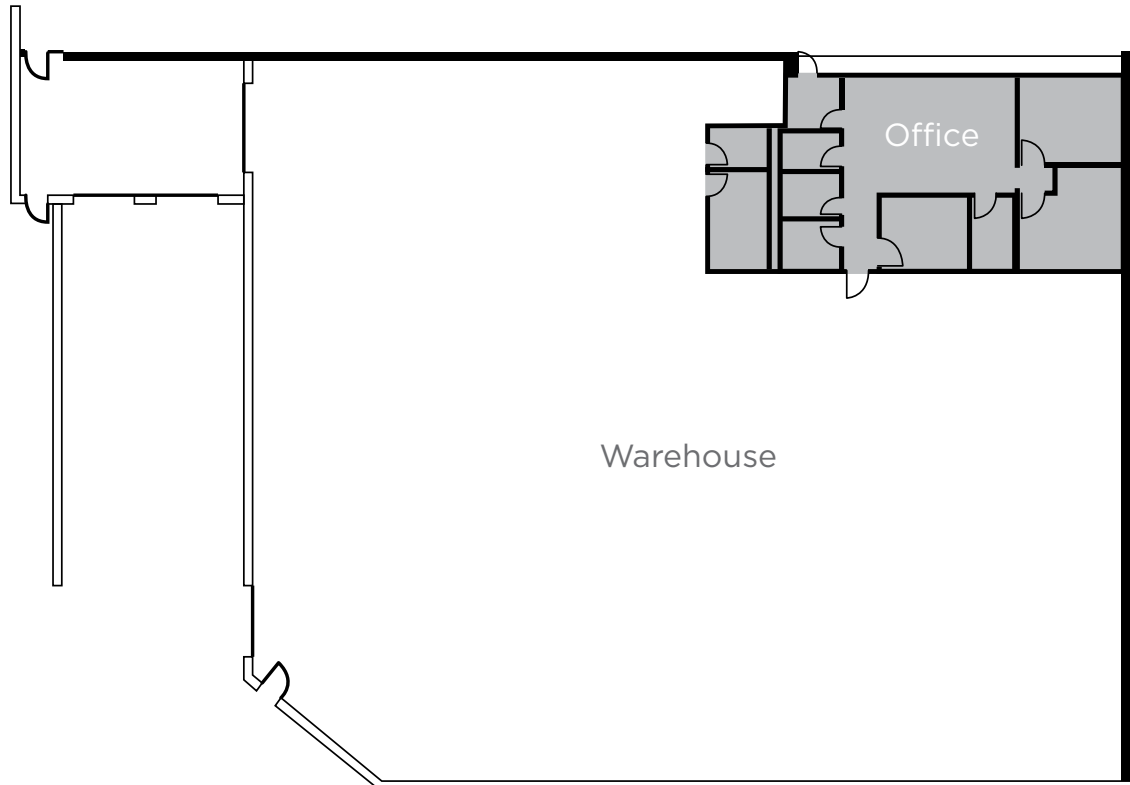
Brett Kroner  
Vice Chair  
+1 847 720 1367  
brett.kroner@cushwake.com

Eric Fischer  
Executive Managing Director  
+1 847 720 1369  
eric.fischer@cushwake.com

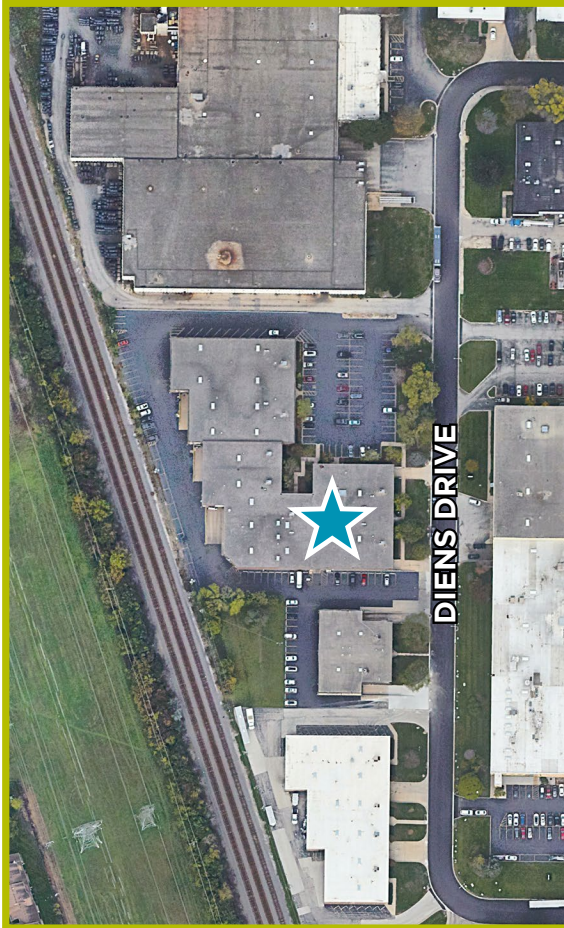
# 466-488 DIENS DRIVE WHEELING IL



**SITE  
PLAN**



# 466-488 DIENS DRIVE WHEELING IL



**Marc Samuels**  
Director  
+1 847 720 1368  
[marc.samuels@cushwake.com](mailto:marc.samuels@cushwake.com)

**Keith Puritz**  
Vice Chair  
+1 847 720 1366  
[keith.puritz@cushwake.com](mailto:keith.puritz@cushwake.com)

**Brett Kroner**  
Vice Chair  
+1 847 720 1367  
[brett.kroner@cushwake.com](mailto:brett.kroner@cushwake.com)

**Eric Fischer**  
Executive Managing Director  
+1 847 720 1369  
[eric.fischer@cushwake.com](mailto:eric.fischer@cushwake.com)