



 meridian

FOR SUBLEASE

266,001 SF
AVAILABLE

ONE CAMPUS MARTIUS

ONE CAMPUS MARTIUS
DETROIT, MI 48226

BUILDING HIGHLIGHTS

- 266,001 SF (Floors 6,7,14,15)
- Furniture negotiable
- Sublease term through 12/31/24
- \$18.50/SF full-service gross

EXPOSURE

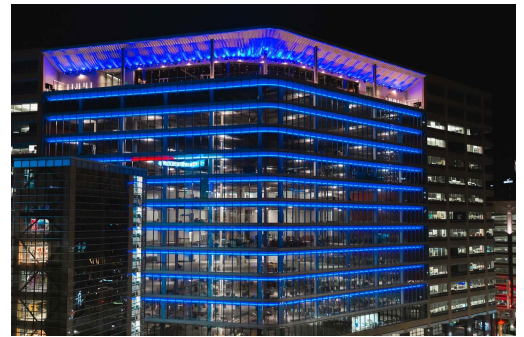
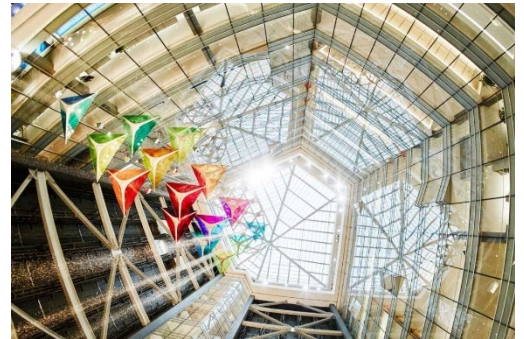
Excellent visibility and access via Jefferson Ave, Woodward Ave, M-10, & I-75

ONSITE AMENITIES

Including 1st floor dining options, adjacent parking deck, fitness facilities, the world's largest indoor waterfall, and more

LIVE, WORK, PLAY

Walkable to entertainment, food, high end retail shopping, upscale apartments, and more

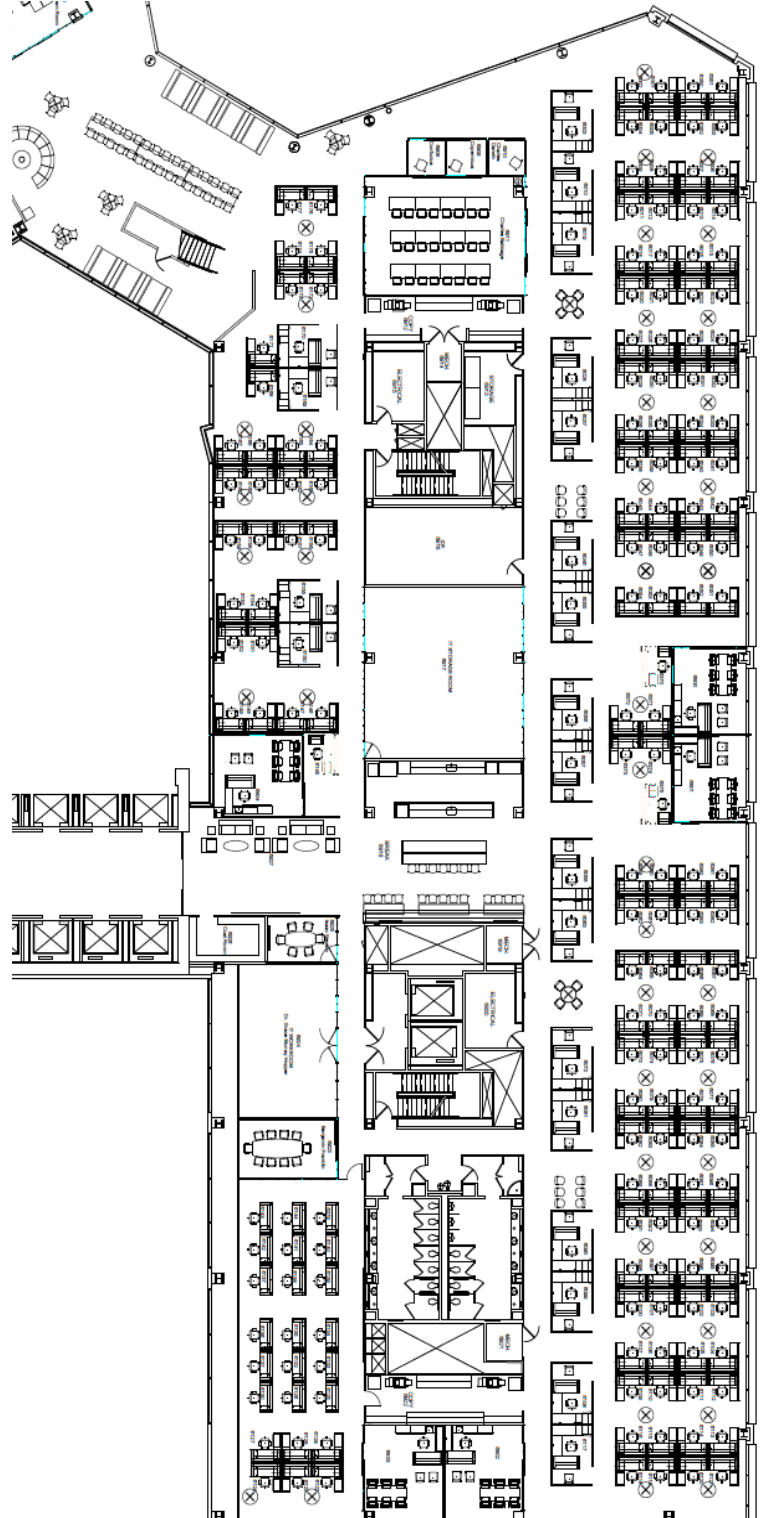
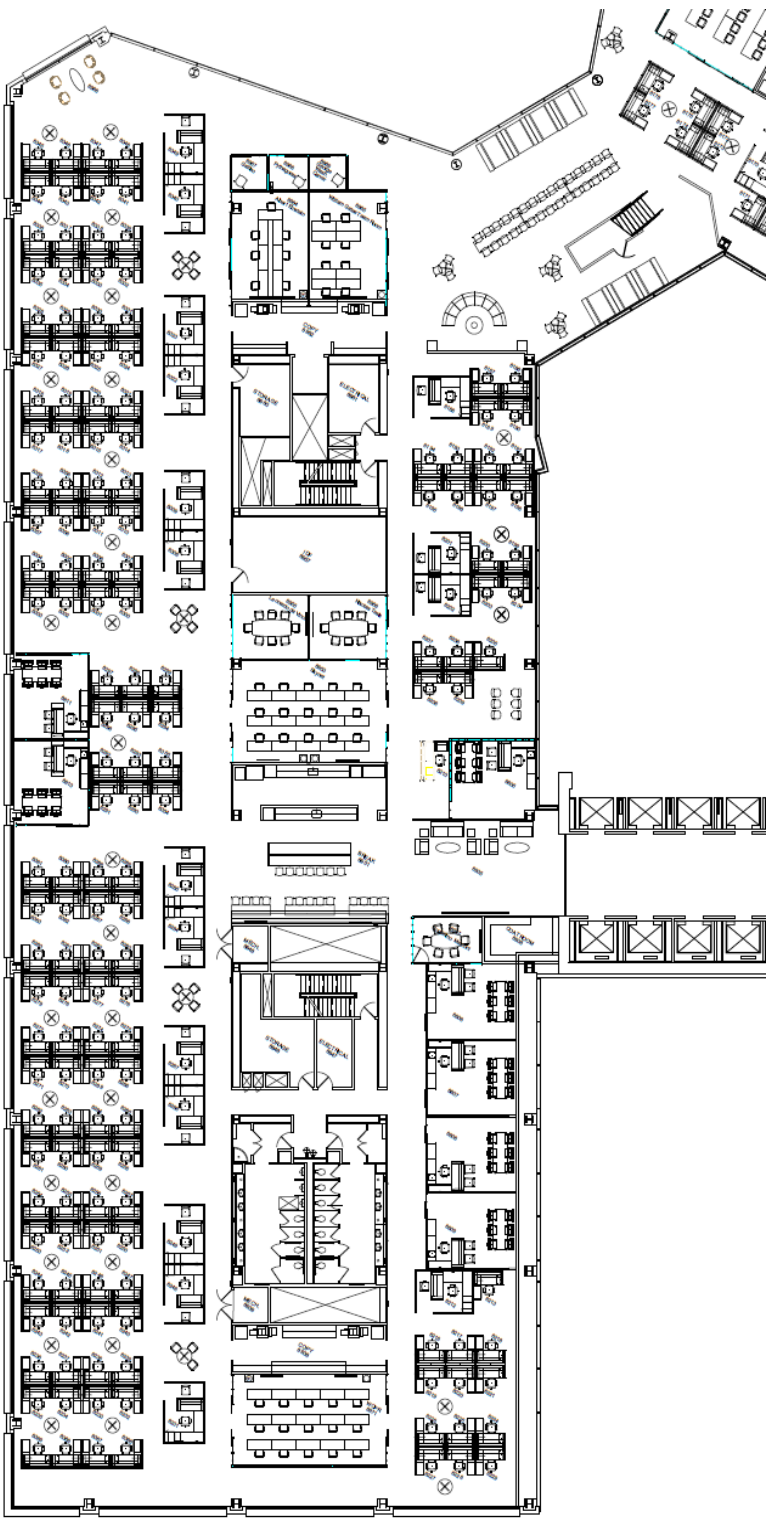


LOCATION



One Campus
Martius

6TH FLOOR MONROE

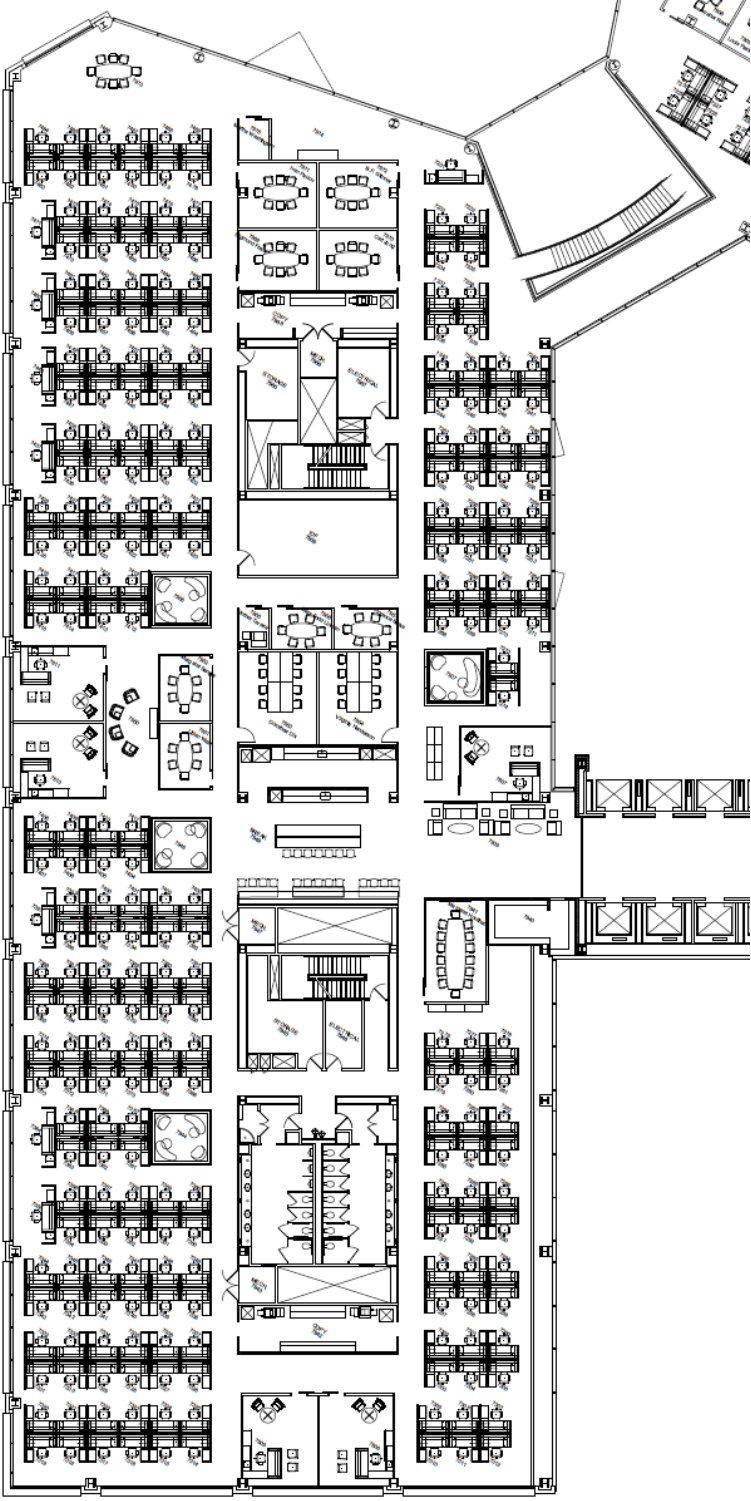


6TH FLOOR WOODWARD

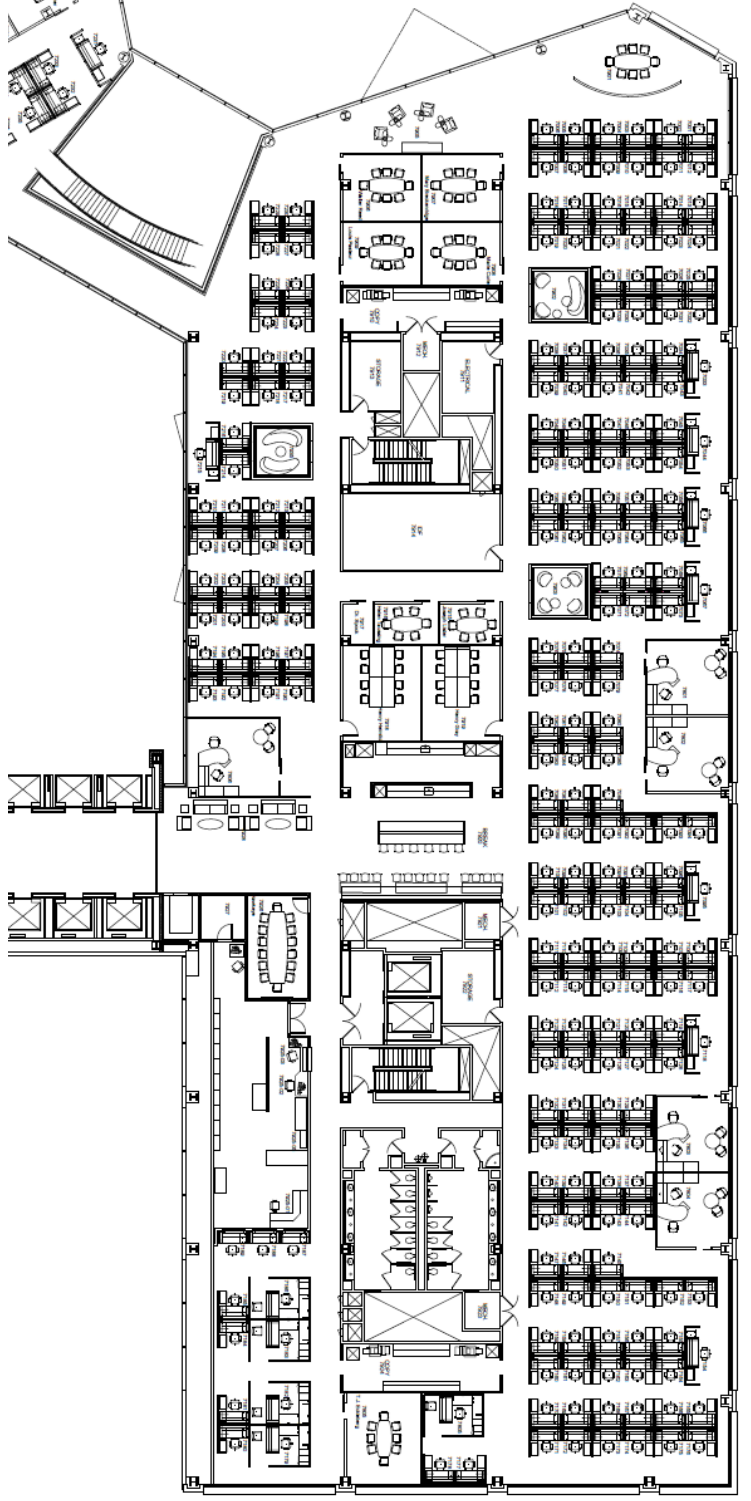
6 MONROE

6 WOODWARD

7TH FLOOR MONROE



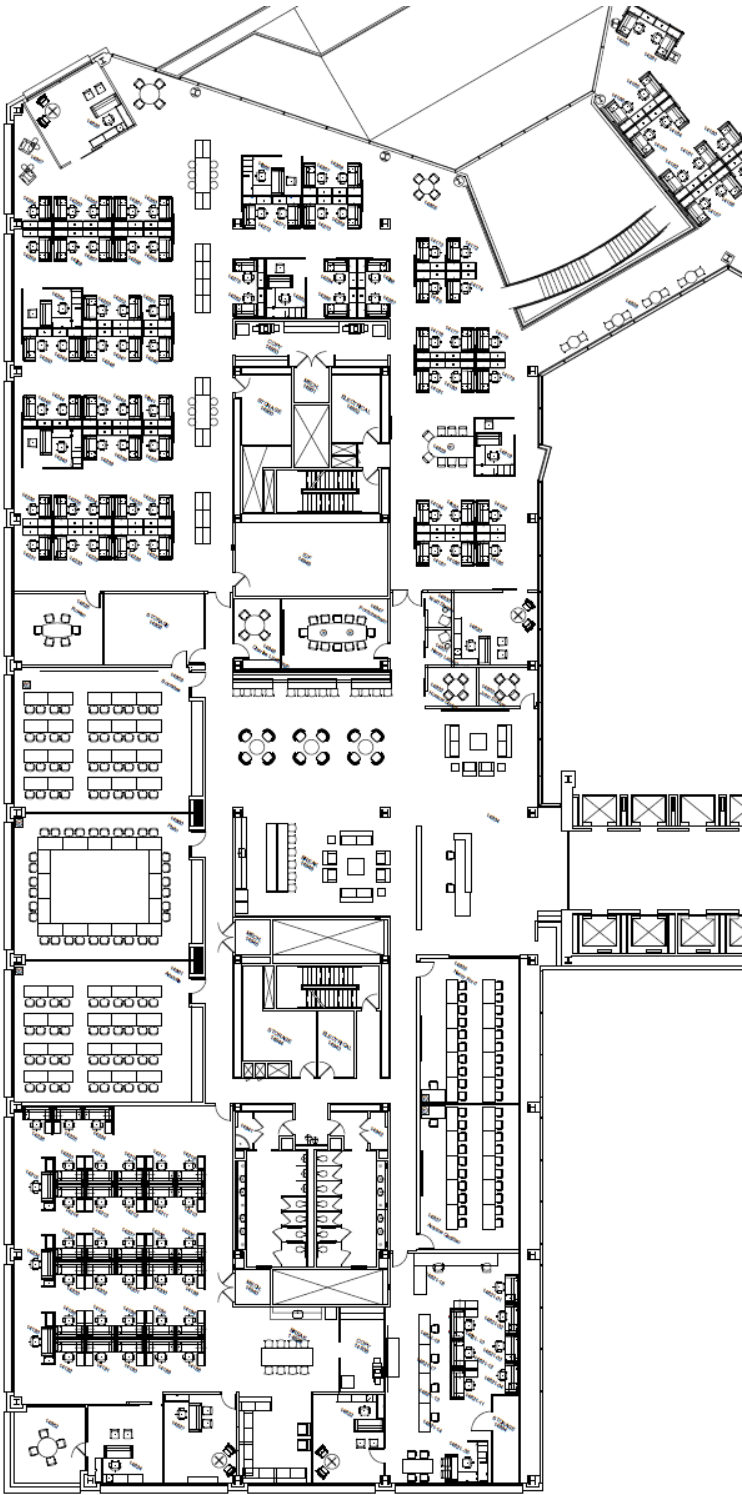
7 MONROE



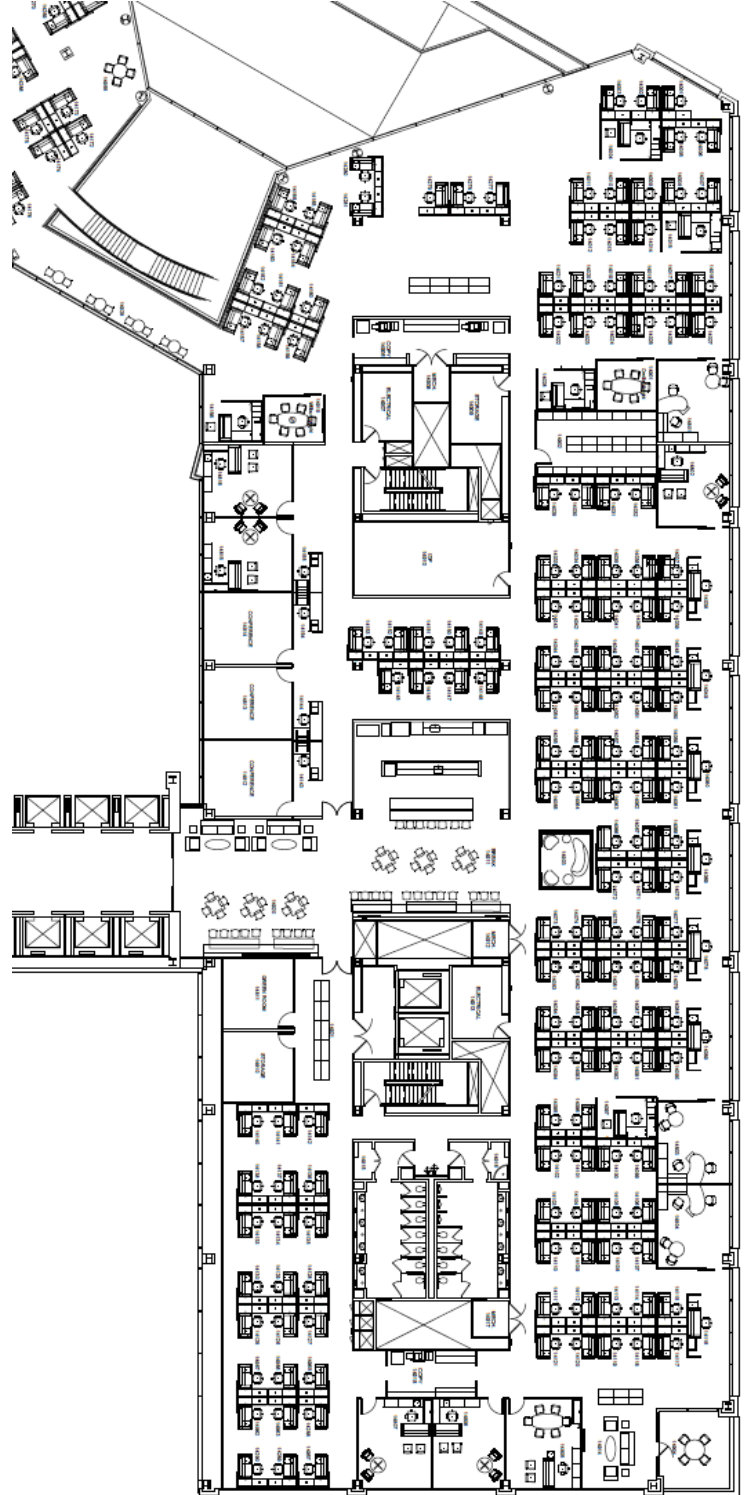
7 WOODWARD

7TH FLOOR WOODWARD

14TH FLOOR MONROE



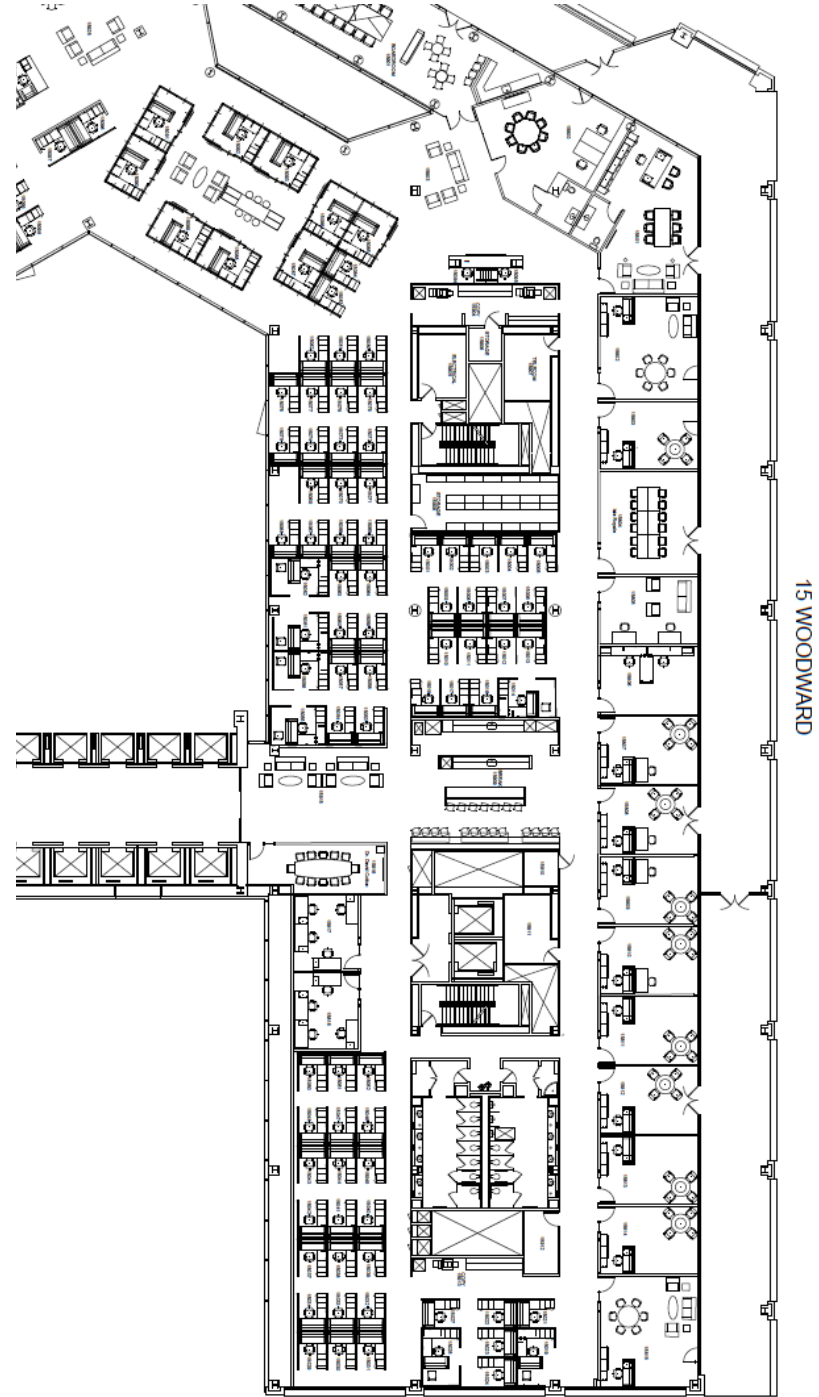
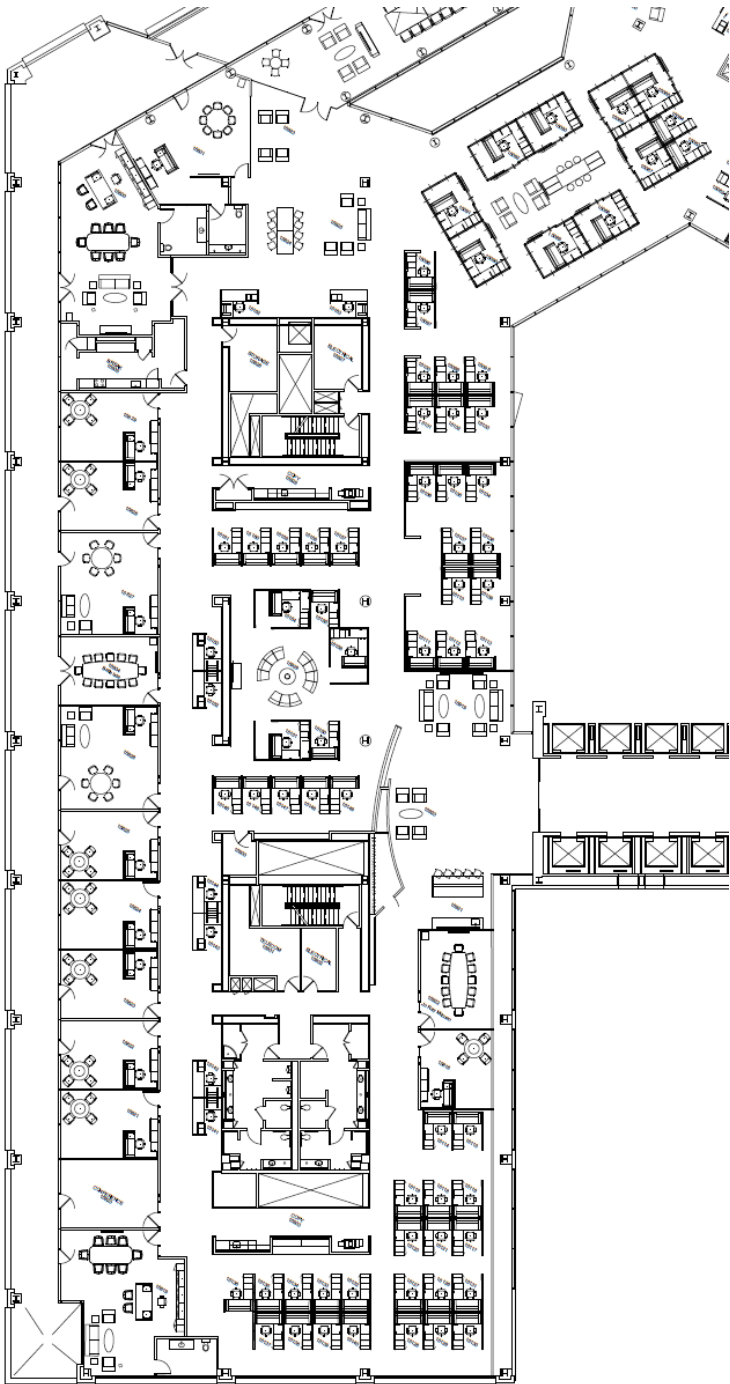
14 MONROE



14 WOODWARD

14TH FLOOR WOODWARD

15TH FLOOR MONROE



15TH FLOOR WOODWARD



John VanNoord

Senior Associate

+1 248 358 6116

john.vannoord@cushwake.com

Garret Keais, SIOR

Executive Managing Director

+1 248 358 6112

garrett.keais@cushwake.com