



# CAMINO SANTA FE BUSINESS PARK

8320, 8340, 8360, 8375, 8380, 8395, 8445  
Camino Santa Fe, San Diego, CA 92121







# CAMINO SANTA FE BUSINESS PARK

8320, 8340, 8360, 8375, 8380, 8395, 8445  
Camino Santa Fe, San Diego, CA 92121



172,743 SQ FT  
RENTABLE AREA



DOCK / GRADE  
LOADING



16' - 22'  
CLEAR HEIGHT



WESTERN MIRAMAR  
LOCATION



**BRANT ABERG, SIOR**  
direct: 858.546.5464  
mobile: 858.413.5600  
brant.aberg@cushwake.com  
CA Lic. 01773573

**RYAN DOWNING, SIOR**  
direct: 858.546.5416  
mobile: 760.840.1164  
ryan.downing@cushwake.com  
CA Lic. 01955032

**JACK TICE**  
direct: 619.500.7626  
mobile: 619.368.9358  
jack.tice@cushwake.com  
CA Lic. 02161178

 **CUSHMAN &  
WAKEFIELD**  
12830 El Camino Real, Suite 100 | San Diego, CA 92130  
858.452.6500 | 858.630.6320 | [cushmanwakefield.com](http://cushmanwakefield.com)



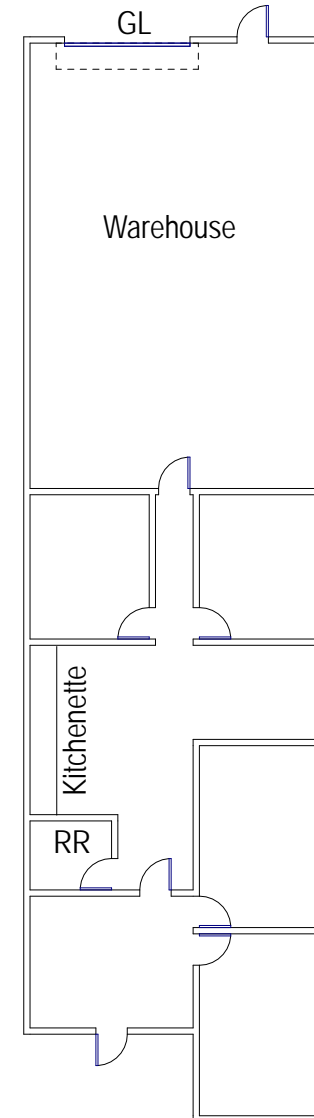
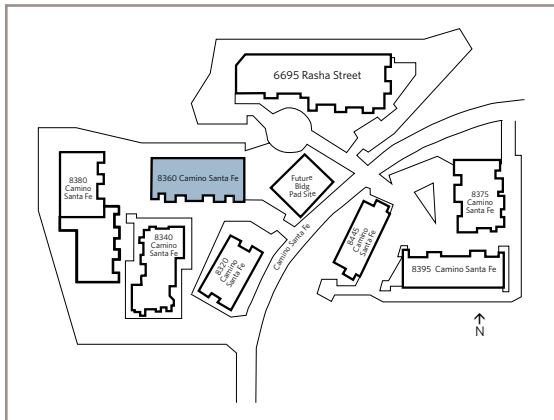
# CAMINO SANTA FE BUSINESS PARK

8320, 8340, 8360, 8375, 8380, 8395, 8445  
Camino Santa Fe, San Diego, CA 92121

## Available Suite

**8360 CAMINO SANTA FE  
SUITE E | 2,192 SF**

- 60% office / 40% warehouse
- (1) grade level loading door
- Lease Rate: Negotiable
- NNNs = \$0.51 PSF/Month



*\*Floorplan to be Verified*

**BRANT ABERG, SIOR**

direct: 858.546.5464

mobile: 858.413.5600

brant.aberg@cushwake.com

CA Lic. 01773573

**RYAN DOWNING, SIOR**

direct: 858.546.5416

mobile: 760.840.1164

ryan.downing@cushwake.com

CA Lic. 01955032

**JACK TICE**

direct: 619.500.7626

mobile: 619.368.9358

jack.tice@cushwake.com

CA Lic. 02161178



**CUSHMAN &  
WAKEFIELD**

12830 El Camino Real, Suite 100 | San Diego, CA 92130  
858.452.6500 | 858.630.6320 | [cushmanwakefield.com](http://cushmanwakefield.com)



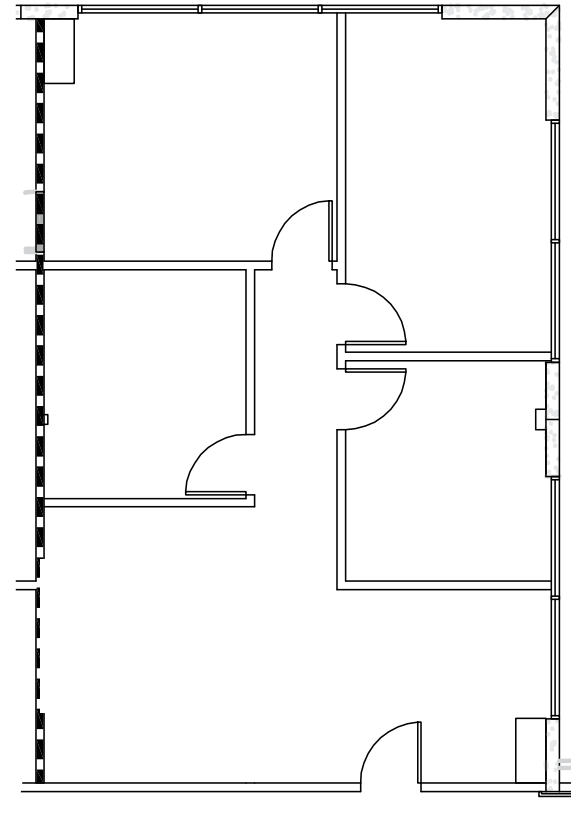
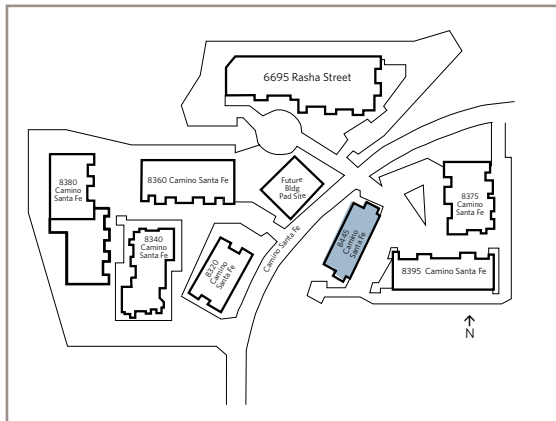
# CAMINO SANTA FE BUSINESS PARK

8320, 8340, 8360, 8375, 8380, 8395, 8445  
Camino Santa Fe, San Diego, CA 92121

## Available Suite

### 8445 CAMINO SANTA FE SUITE 201 | 1,145 SF

- Month-to-month and short term leases will be considered
- Reception area
- 4 Private offices
- Lease Rate: \$1,947/month + Electric



*\*Floorplan to be Verified*

#### BRANT ABERG, SIOR

direct: 858.546.5464

mobile: 858.413.5600

brant.aberg@cushwake.com

CA Lic. 01773573

#### RYAN DOWNING, SIOR

direct: 858.546.5416

mobile: 760.840.1164

ryan.downing@cushwake.com

CA Lic. 01955032

#### JACK TICE

direct: 619.500.7626

mobile: 619.368.9358

jack.tice@cushwake.com

CA Lic. 02161178



12830 El Camino Real, Suite 100 | San Diego, CA 92130  
858.452.6500 | 858.630.6320 | [cushmanwakefield.com](http://cushmanwakefield.com)





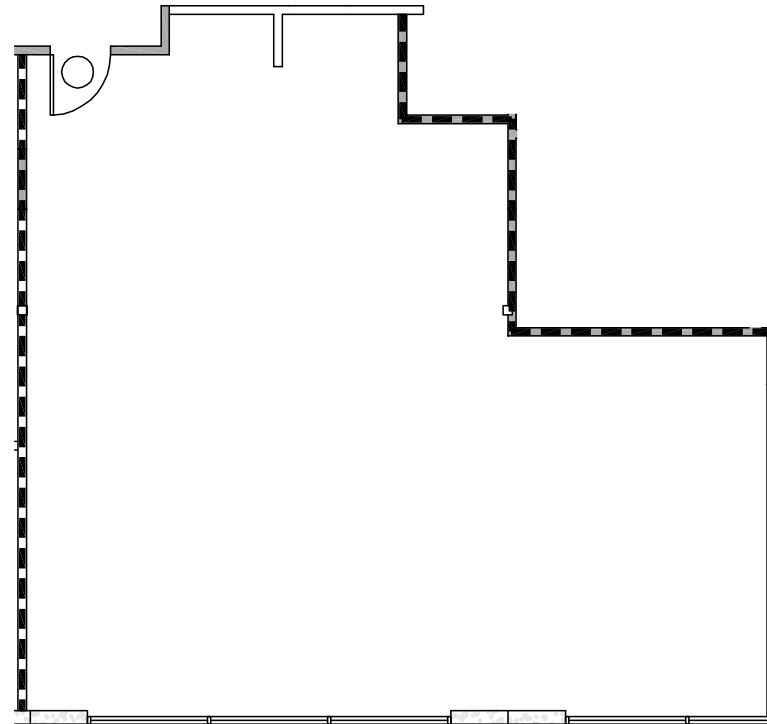
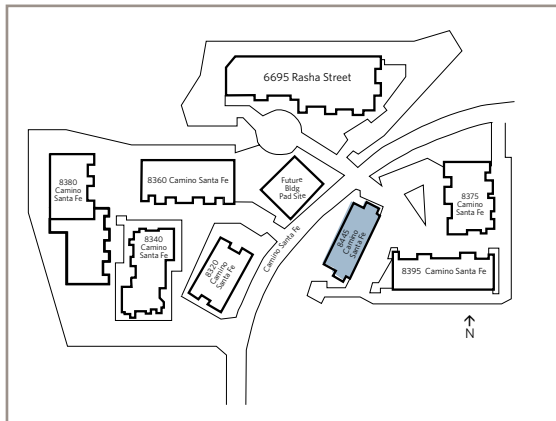
# CAMINO SANTA FE BUSINESS PARK

8320, 8340, 8360, 8375, 8380, 8395, 8445  
Camino Santa Fe, San Diego, CA 92121

## Available Suite

**8445 CAMINO SANTA FE  
SUITE 208 | 1,245 SF**

- Month-to-month and short term leases will be considered
- Open office
- Lease Rate: \$2,117/month + Electric



*\*Floorplan to be Verified*

**BRANT ABERG, SIOR**

direct: 858.546.5464

mobile: 858.413.5600

brant.aberg@cushwake.com

CA Lic. 01773573

**RYAN DOWNING, SIOR**

direct: 858.546.5416

mobile: 760.840.1164

ryan.downing@cushwake.com

CA Lic. 01955032

**JACK TICE**

direct: 619.500.7626

mobile: 619.368.9358

jack.tice@cushwake.com

CA Lic. 02161178



12830 El Camino Real, Suite 100 | San Diego, CA 92130  
858.452.6500 | 858.630.6320 | [cushmanwakefield.com](http://cushmanwakefield.com)





# CAMINO SANTA FE BUSINESS PARK

8320, 8340, 8360, 8375, 8380, 8395, 8445  
Camino Santa Fe, San Diego, CA 92121



©Cushman & Wakefield. All rights reserved. This information has been obtained from sources believed to be reliable but has not been verified. NO WARRANTY OR REPRESENTATION, EXPRESS OR IMPLIED, IS MADE AS TO THE CONDITION OF THE PROPERTY (OR PROPERTIES) REFERENCED HEREIN OR AS TO THE ACCURACY OR COMPLETENESS OF THE INFORMATION CONTAINED HEREIN, AND SAME IS SUBMITTED SUBJECT TO ERRORS, OMISSIONS, CHANGE OF PRICE, RENTAL OR OTHER CONDITIONS, WITHDRAWAL WITHOUT NOTICE, AND TO ANY SPECIAL LISTING CONDITIONS IMPOSED BY THE PROPERTY OWNER(S).

**BRANT ABERG, SIOR**

direct: 858.546.5464

mobile: 858.413.5600

brant.aberg@cushwake.com

CA Lic. 01773573

**RYAN DOWNING, SIOR**

direct: 858.546.5416

mobile: 760.840.1164

ryan.downing@cushwake.com

CA Lic. 01955032

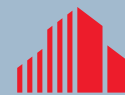
**JACK TICE**

direct: 619.500.7626

mobile: 619.368.9358

jack.tice@cushwake.com

CA Lic. 02161178



**CUSHMAN &  
WAKEFIELD**

12830 El Camino Real, Suite 100 | San Diego, CA 92130  
858.452.6500 | 858.630.6320 | [cushmanwakefield.com](http://cushmanwakefield.com)