

LOUISVILLE MEGA SPACE

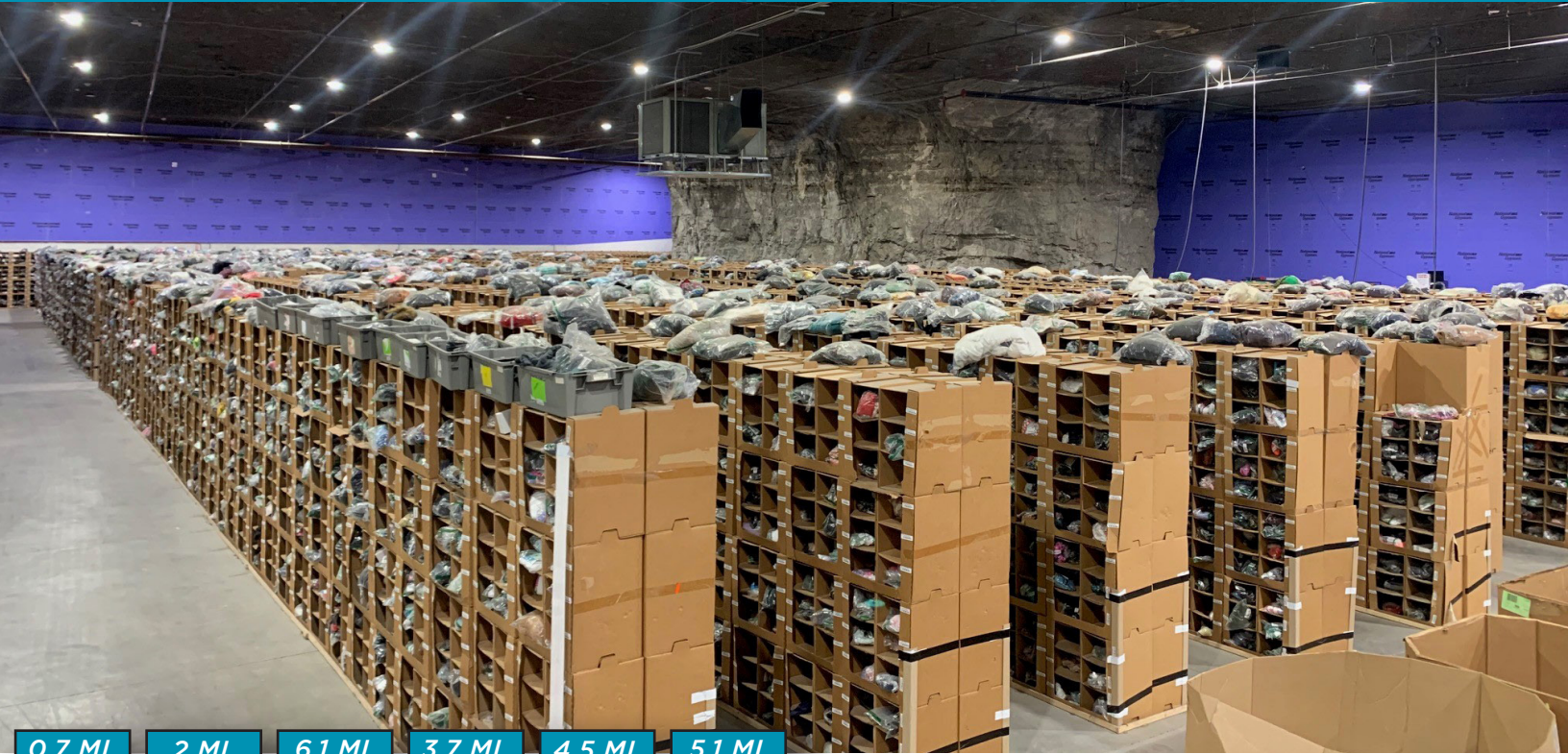
BUILDING 76 | 5,263 SF



Commercial Kentucky

LOUISVILLEMEGASPACE.COM

1841 TAYLOR AVENUE
LOUISVILLE, KY 40213



0.7 MI. TO INTERSTATE 264

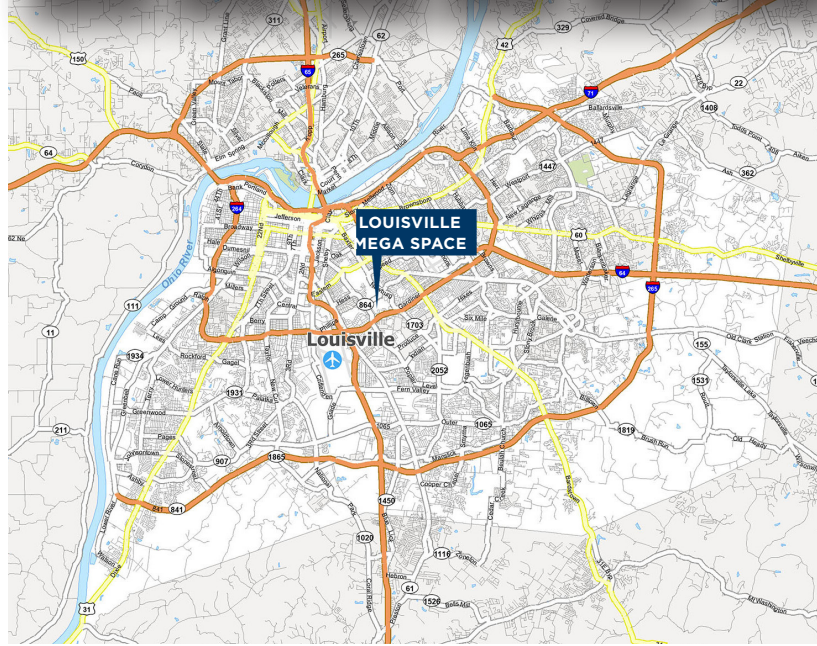
2 MI. TO INTERSTATE 65

6.1 MI. TO INTERSTATE 64

3.7 MI. TO AIRPORT

4.5 MI. TO UPS

5.1 MI. TO FORD



BUILDING SPECS

BUILDING SIZE	5,263 SF (MAX CONTIGUOUS OF 18,336 SF)
DOCK DOORS	1 COMMON DOCK (9' X 10')
DRIVE-IN DOORS	1 (12' X 16')
CEILING HEIGHT	28'
OFFICE SIZE	BTS
FIRE PROTECTION	ESFR
BUILDING LIGHTING	LED
POWER	480 V / 3-PHASE
ACCESS	24 HRS / 7 DAYS PER WEEK
SECURITY	SECURE GATED ENTRANCES
TEMPERATURE	NATURAL AMBIENT TEMPERATURE OF 63 - 68 DEGREES YEAR ROUND

BLAKE SCINTA, CCIM
Senior Associate
+1 502 719 3230
bscinta@commercialkentucky.com

JAKE MILLS
Senior Associate
+1 502 719 3252
jmills@commercialkentucky.com

STEPHAN F. GRAY, SIOR
Senior Director
+1 502 719 3256
sgray@commercialkentucky.com

LOUISVILLE MEGA SPACE

BUILDING 76 | 5,263 SF

LOUISVILLEMEGASPACE.COM
1841 TAYLOR AVENUE
LOUISVILLE, KY 40213



CAD LAYOUT
AVAILABLE
UPON REQUEST

BLAKE SCINTA, CCIM
Senior Associate
+1 502 719 3230
bscinta@commercialkentucky.com

JAKE MILLS
Senior Associate
+1 502 719 3252
jmills@commercialkentucky.com

STEPHAN F. GRAY, SIOR
Senior Director
+1 502 719 3256
sgray@commercialkentucky.com