

LOUISVILLE MEGA SPACE

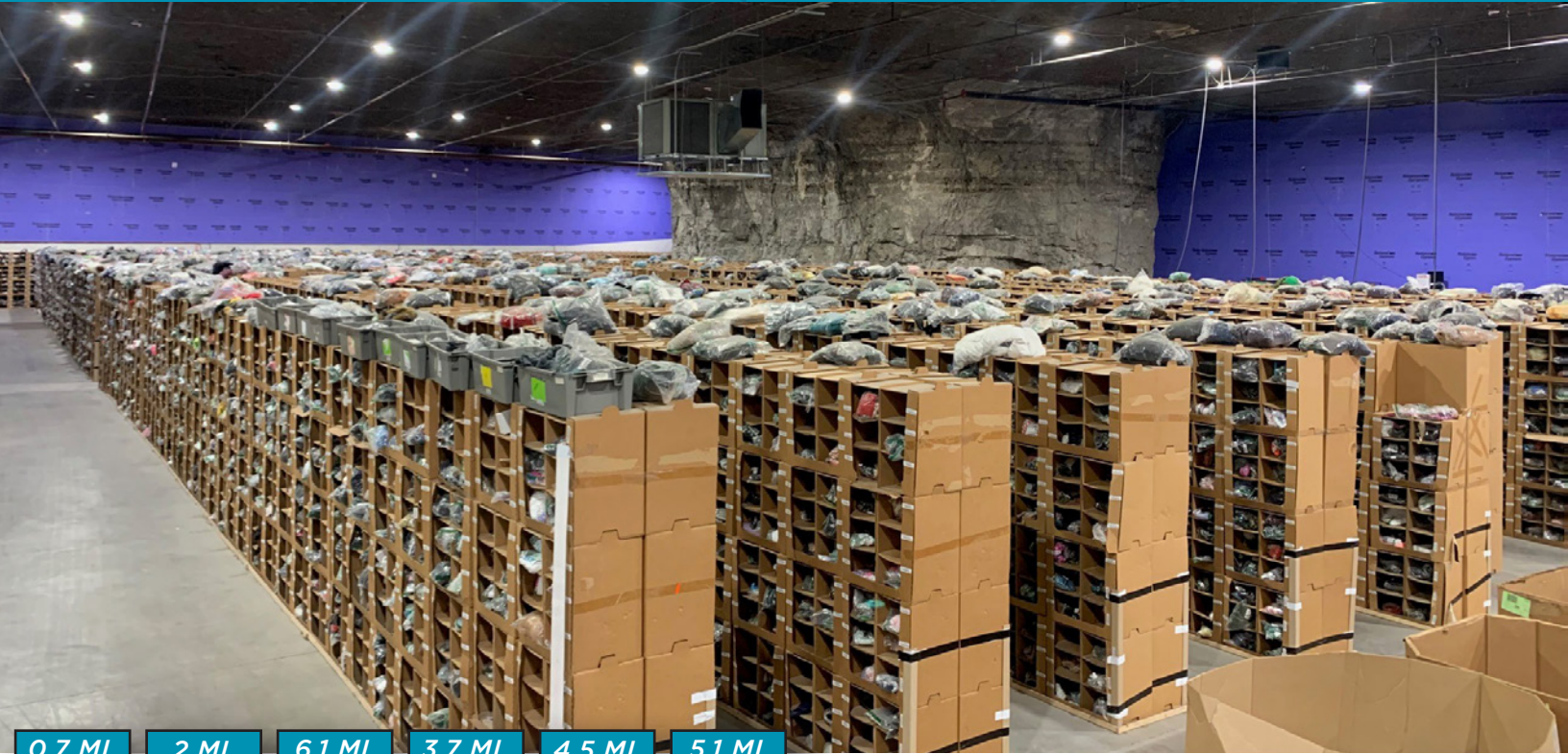
BUILDING 44 | 45,337 SF



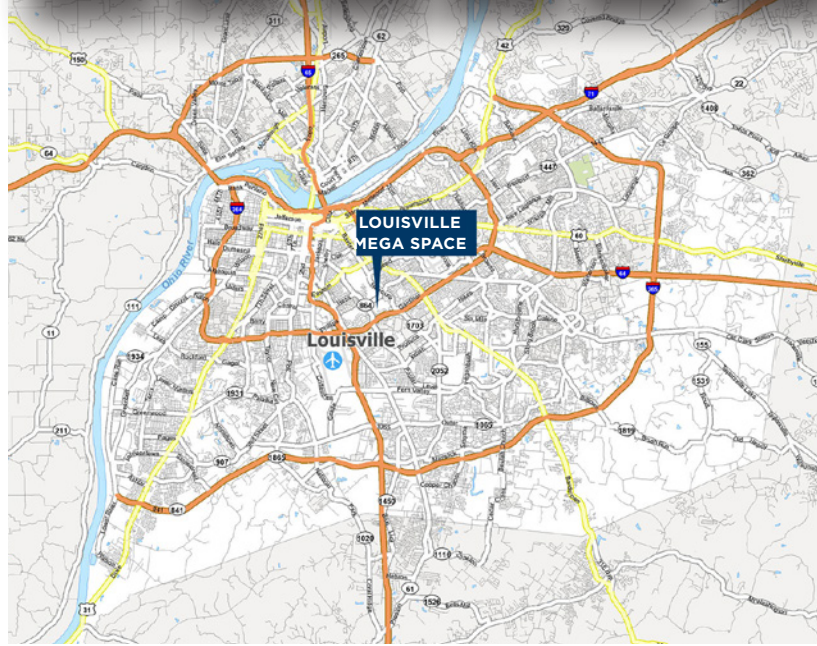
Commercial Kentucky

LOUISVILLEMEGASPACE.COM

1841 TAYLOR AVENUE
LOUISVILLE, KY 40213



0.7 MI. TO 2 MI. TO 6.1 MI. TO 3.7 MI. TO 4.5 MI. TO 5.1 MI. TO



BUILDING SPECS

| | |
|-------------------|---|
| BUILDING SIZE | 45,337 SF (MAX CONTIGUOUS OF 63,757 SF) |
| DOCK DOORS | 2 |
| DRIVE-IN DOORS | 1 (18' X 16') |
| CEILING HEIGHT | 22' - 24' |
| OFFICE SIZE | BTS |
| FIRE PROTECTION | ORDINARY WET |
| BUILDING LIGHTING | LED |
| POWER | 480 V / 3-PHASE |
| ACCESS | 24 HRS / 7 DAYS PER WEEK |
| SECURITY | SECURE GATED ENTRANCES |
| TEMPERATURE | NATURAL AMBIENT TEMPERATURE OF 63 - 68 DEGREES YEAR ROUND |

BLAKE SCINTA, CCIM
Senior Associate
+1 502 719 3230
bscinta@commercialkentucky.com

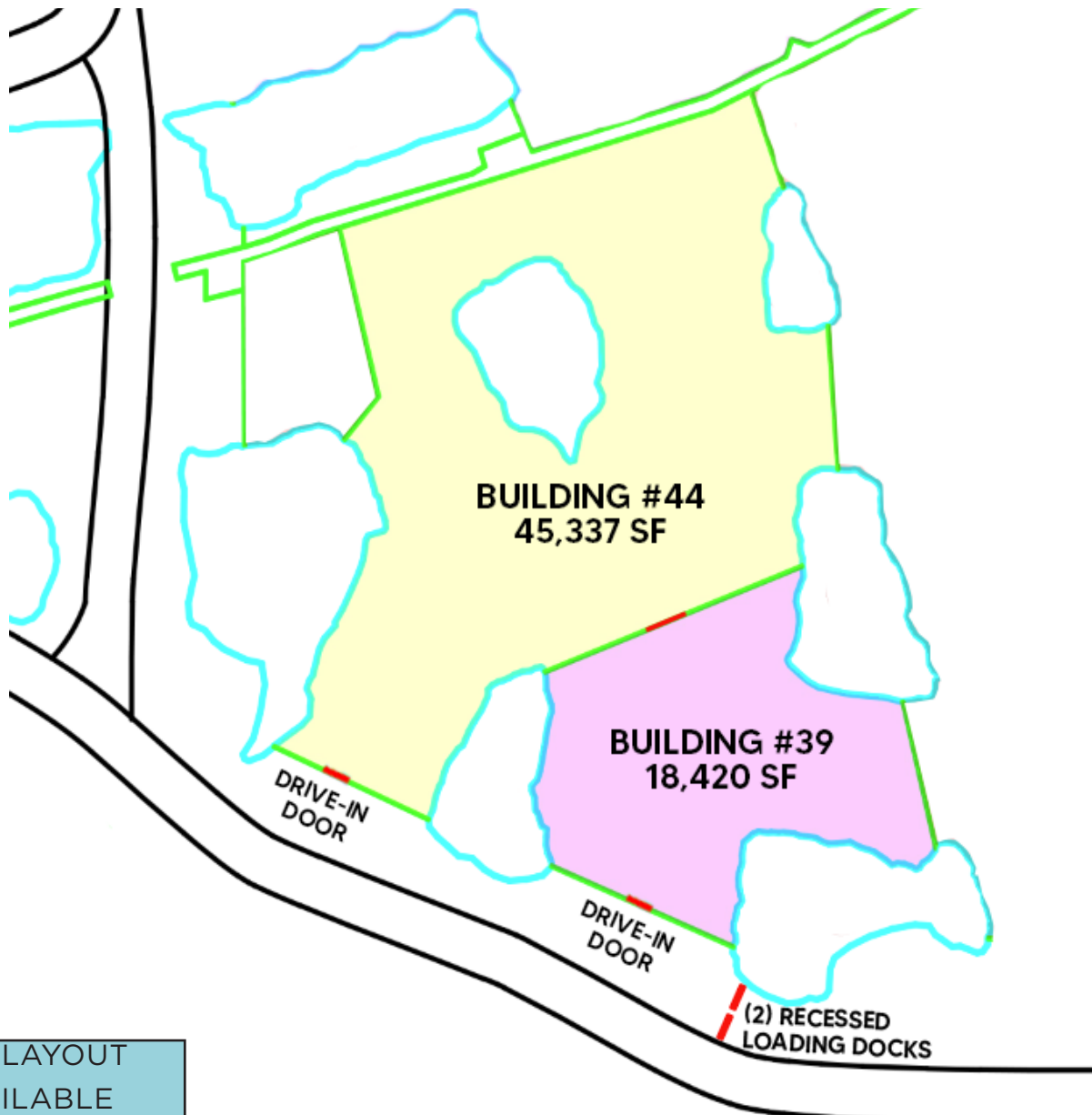
JAKE MILLS
Senior Associate
+1 502 719 3252
jmills@commercialkentucky.com

STEPHAN F. GRAY, SIOR
Senior Director
+1 502 719 3256
sgray@commercialkentucky.com

LOUISVILLE MEGA SPACE

BUILDING 44 | 45,337 SF

LOUISVILLEMEGASPACE.COM
1841 TAYLOR AVENUE
LOUISVILLE, KY 40213



CAD LAYOUT
AVAILABLE
UPON REQUEST

BLAKE SCINTA, CCIM
Senior Associate
+1 502 719 3230
bscinta@commercialkentucky.com

JAKE MILLS
Senior Associate
+1 502 719 3252
jmills@commercialkentucky.com

STEPHAN F. GRAY, SIOR
Senior Director
+1 502 719 3256
sgray@commercialkentucky.com