

# LOUISVILLE MEGA SPACE

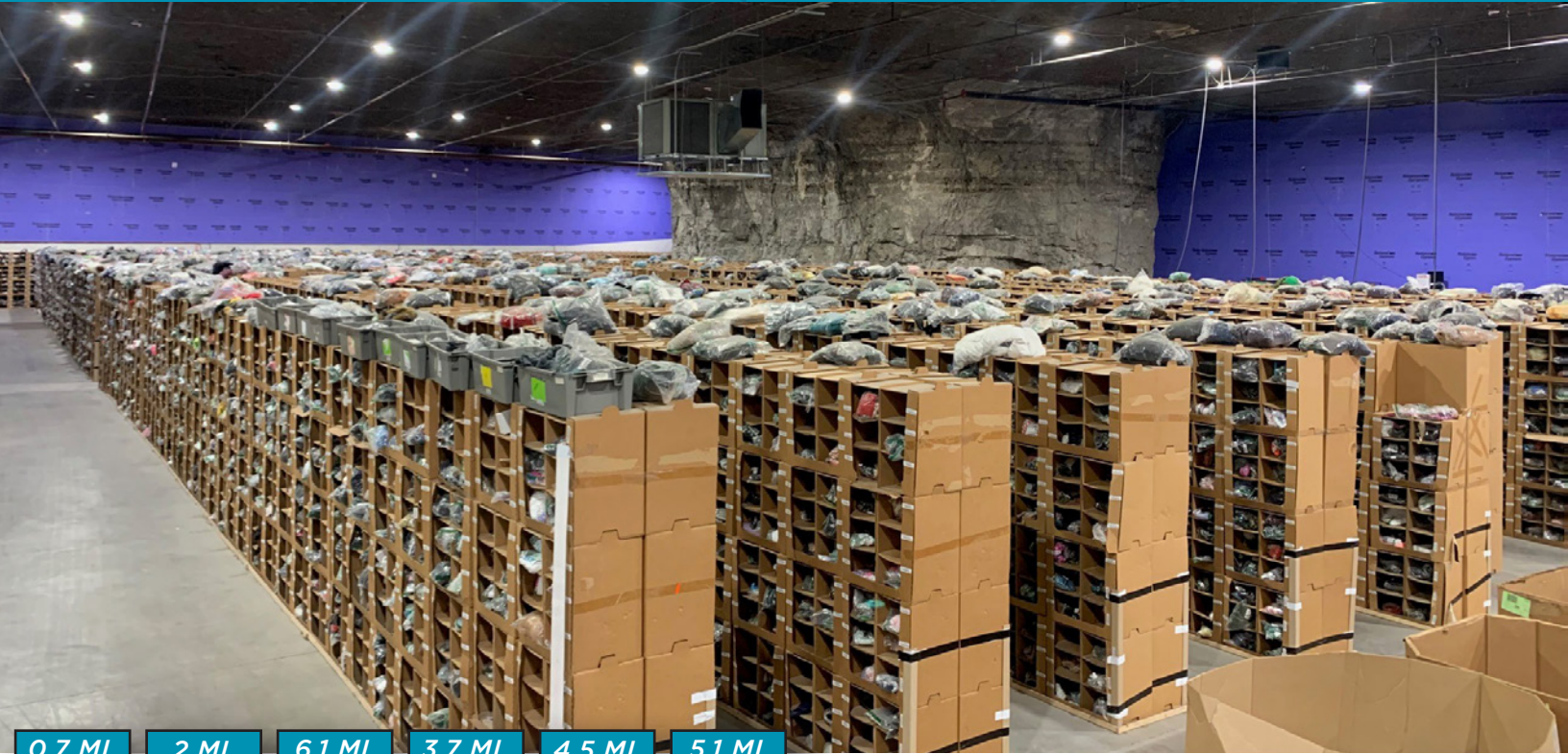
BUILDING 24 | 59,633 SF



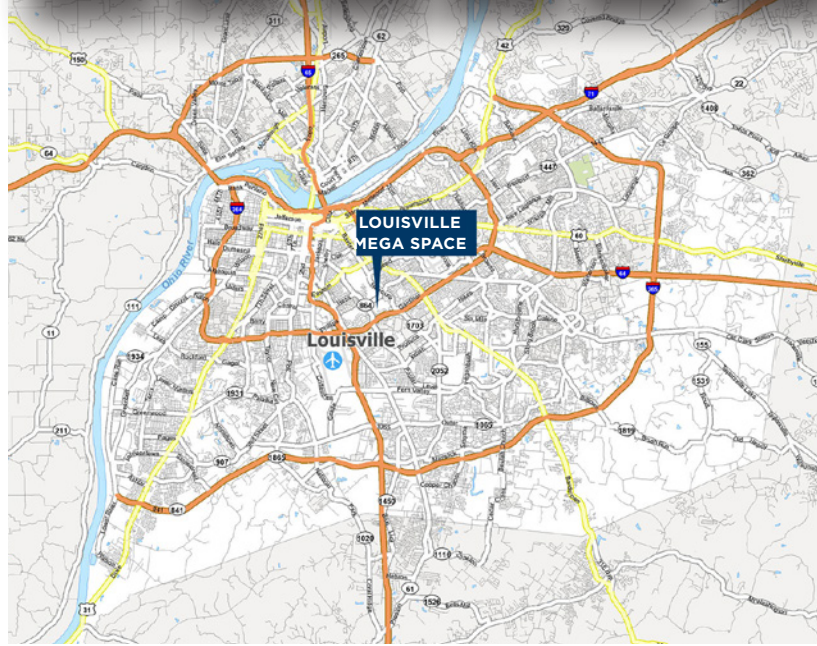
Commercial Kentucky

LOUISVILLEMEGASPACE.COM

1841 TAYLOR AVENUE  
LOUISVILLE, KY 40213



0.7 MI. TO 2 MI. TO 6.1 MI. TO 3.7 MI. TO 4.5 MI. TO 5.1 MI. TO



## BUILDING SPECS

BUILDING SIZE	59,633 SF
DOCK DOORS	7
DRIVE-IN DOORS	0 (2 CAN BE ADDED)
CEILING HEIGHT	23' - 26'
OFFICE SIZE	BTS
FIRE PROTECTION	ESFR
BUILDING LIGHTING	LED
POWER	480 V / 3-PHASE
ACCESS	24 HRS / 7 DAYS PER WEEK
SECURITY	SECURE GATED ENTRANCES
TEMPERATURE	NATURAL AMBIENT TEMPERATURE OF 63 - 68 DEGREES YEAR ROUND

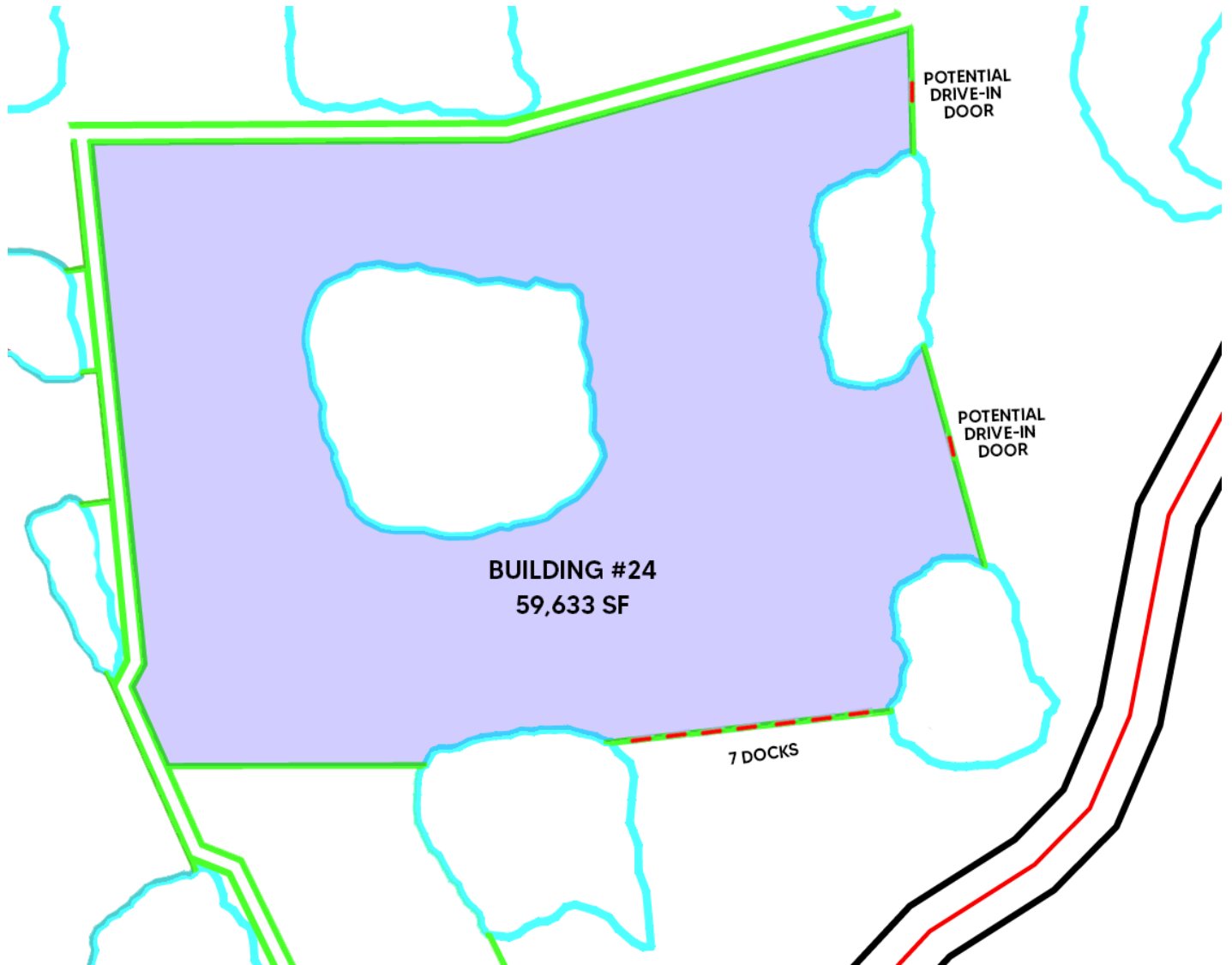
**BLAKE SCINTA, CCIM**  
Senior Associate  
+1 502 719 3230  
bscinta@commercialkentucky.com

**JAKE MILLS**  
Senior Associate  
+1 502 719 3252  
jmills@commercialkentucky.com

**STEPHAN F. GRAY, SIOR**  
Senior Director  
+1 502 719 3256  
sgray@commercialkentucky.com

# LOUISVILLE MEGA SPACE

BUILDING 24 | 59,663 SF



CAD LAYOUT  
AVAILABLE  
UPON REQUEST

**BLAKE SCINTA, CCIM**  
Senior Associate  
+1 502 719 3230  
bscinta@commercialkentucky.com

**JAKE MILLS**  
Senior Associate  
+1 502 719 3252  
jmills@commercialkentucky.com

**STEPHAN F. GRAY, SIOR**  
Senior Director  
+1 502 719 3256  
sgray@commercialkentucky.com