

LOUISVILLE MEGA SPACE

BUILDING 74 | 5,708 SF

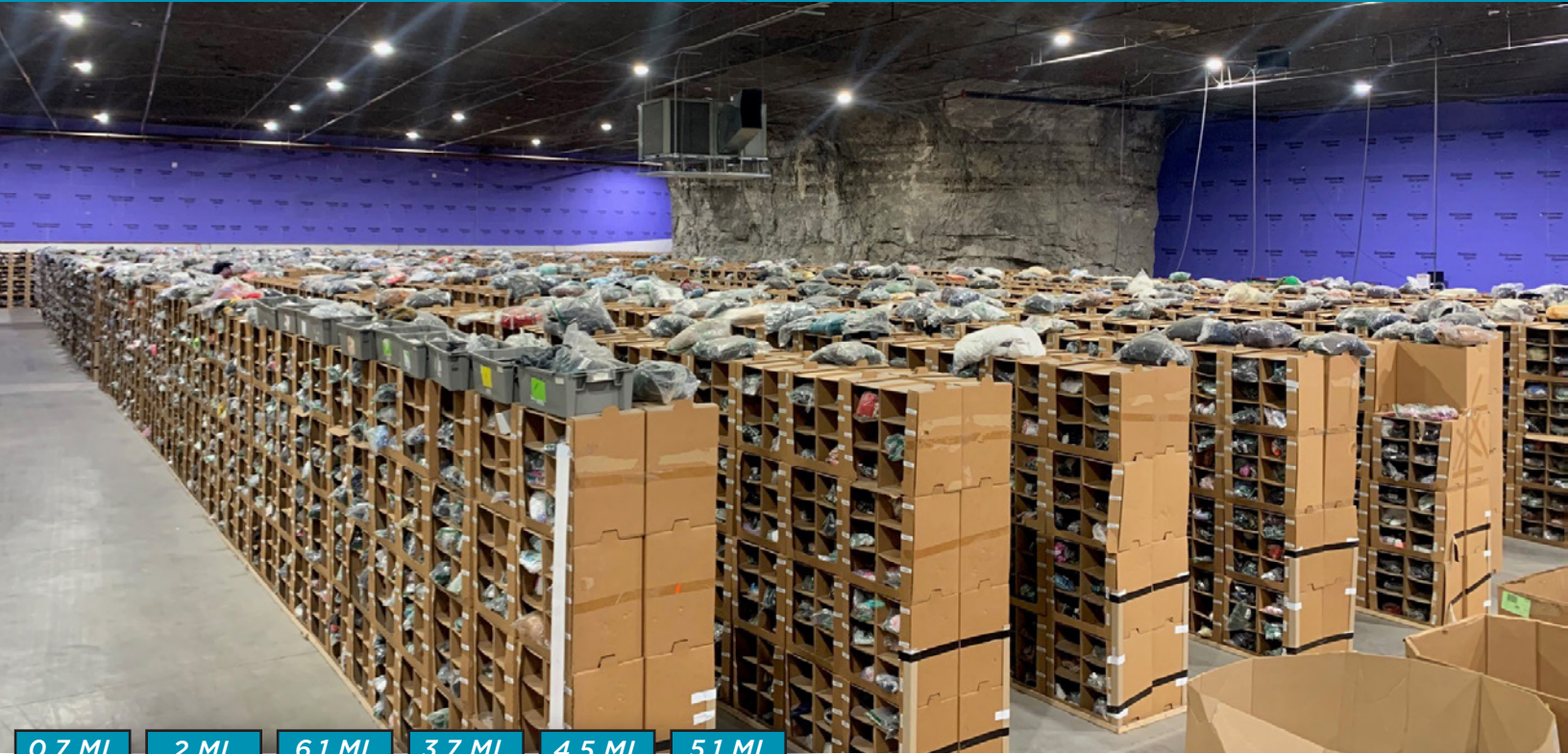


Commercial Kentucky

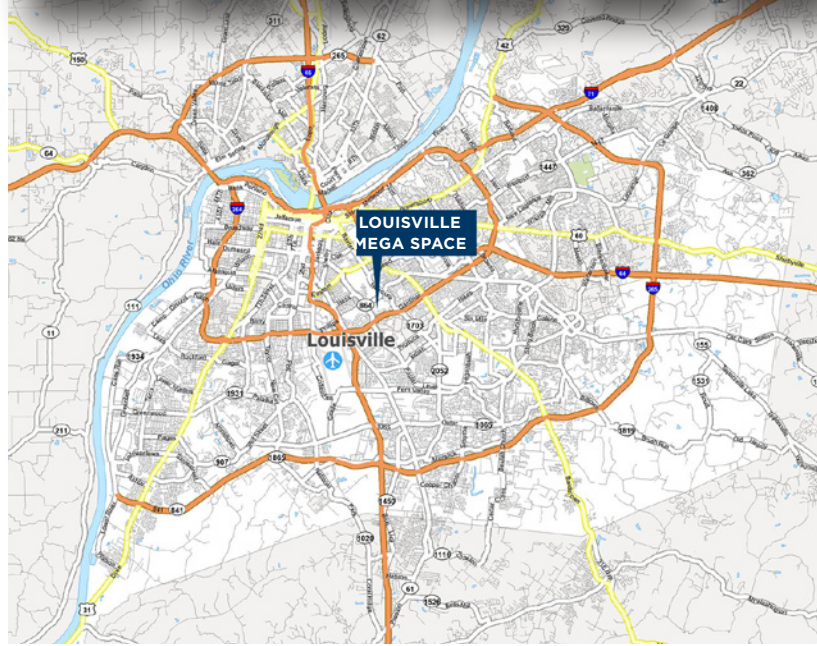
LOUISVILLEMEGASPACE.COM

1841 TAYLOR AVENUE

LOUISVILLE, KY 40213



0.7 MI. TO 	2 MI. TO 	6.1 MI. TO 	3.7 MI. TO 	4.5 MI. TO 	5.1 MI. TO
-------------------	-----------------	-------------------	-------------------	-------------------	-------------------



BUILDING SPECS

BUILDING SIZE	5,708 SF (MAX CONTIGUOUS OF 18,336 SF)
DOCK DOORS	1 COMMON DOCK (9' X 10')
DRIVE-IN DOORS	1 (12' X 16')
CEILING HEIGHT	26'
OFFICE SIZE	BTS
FIRE PROTECTION	ESFR
BUILDING LIGHTING	LED
POWER	480 V / 3-PHASE
ACCESS	24 HRS / 7 DAYS PER WEEK
SECURITY	SECURE GATED ENTRANCES
TEMPERATURE	NATURAL AMBIENT TEMPERATURE OF 63 - 68 DEGREES YEAR ROUND

STEPHAN F. GRAY, SIOR
Senior Director
+1 502 719 3256
sgray@commercialkentucky.com

JAKE MILLS
Senior Associate
+1 502 719 3252
jmills@commercialkentucky.com

LOUISVILLE MEGA SPACE

BUILDING 74 | 5,708 SF

LOUISVILLEMEGASPACE.COM
1841 TAYLOR AVENUE
LOUISVILLE, KY 40213



CAD LAYOUT
AVAILABLE
UPON REQUEST

STEPHAN F. GRAY, SIOR
Senior Director
+1 502 719 3256
sgray@commercialkentucky.com

JAKE MILLS
Senior Associate
+1 502 719 3252
jmills@commercialkentucky.com