

LOUISVILLE MEGA SPACE

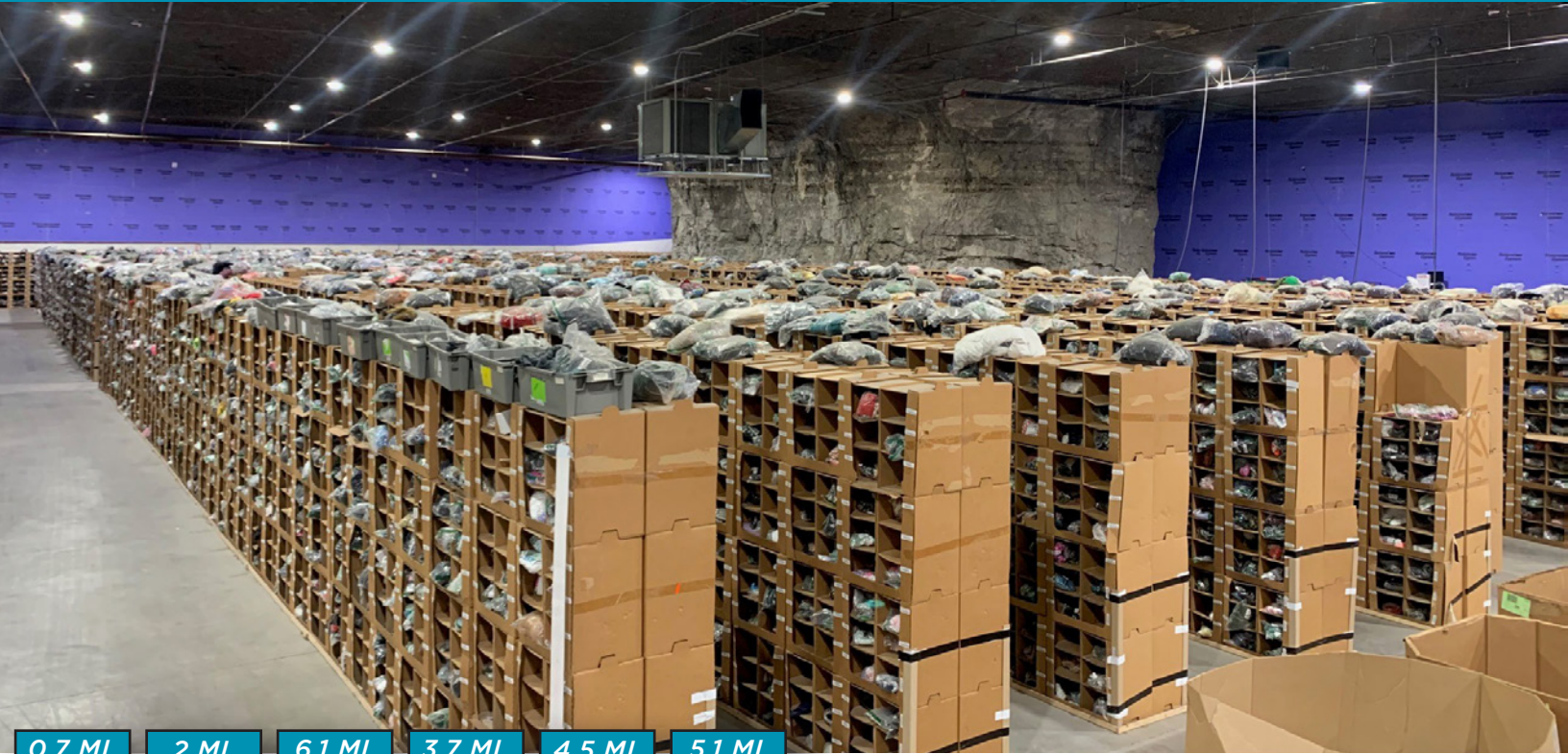
BUILDING 39 | 18,420 SF



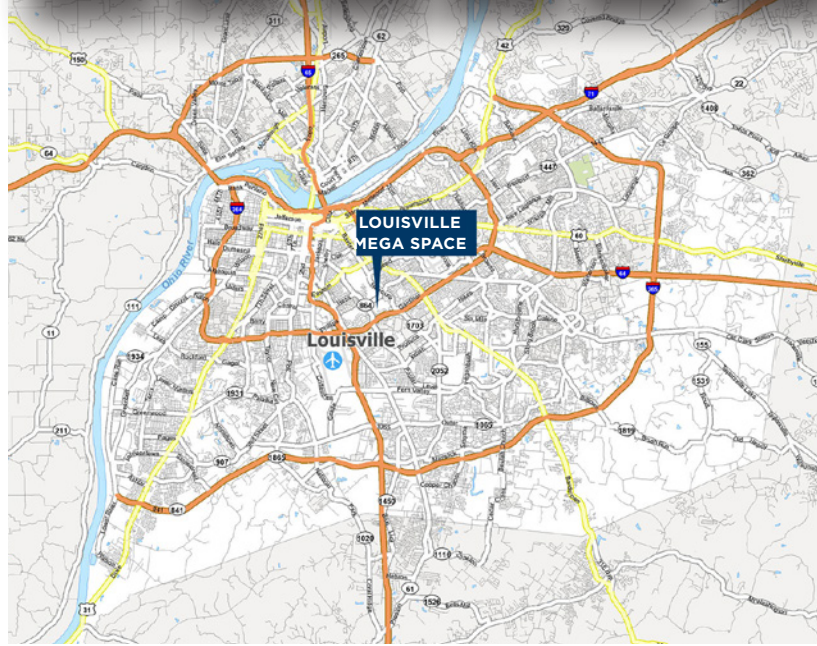
Commercial Kentucky

LOUISVILLEMEGASPACE.COM

1841 TAYLOR AVENUE
LOUISVILLE, KY 40213



0.7 MI. TO 2 MI. TO 6.1 MI. TO 3.7 MI. TO 4.5 MI. TO 5.1 MI. TO



BUILDING SPECS

BUILDING SIZE	18,420 SF (MAX CONTIGUOUS OF 63,757 SF)
DOCK DOORS	2
DRIVE-IN DOORS	1 (18' X 16')
CEILING HEIGHT	22' - 24'
OFFICE SIZE	BTS
FIRE PROTECTION	ORDINARY WET
BUILDING LIGHTING	LED
POWER	480 V / 3-PHASE
ACCESS	24 HRS / 7 DAYS PER WEEK
SECURITY	SECURE GATED ENTRANCES
TEMPERATURE	NATURAL AMBIENT TEMPERATURE OF 63 - 68 DEGREES YEAR ROUND

BLAKE SCINTA, CCIM
Senior Associate
+1 502 719 3230
bscinta@commercialkentucky.com

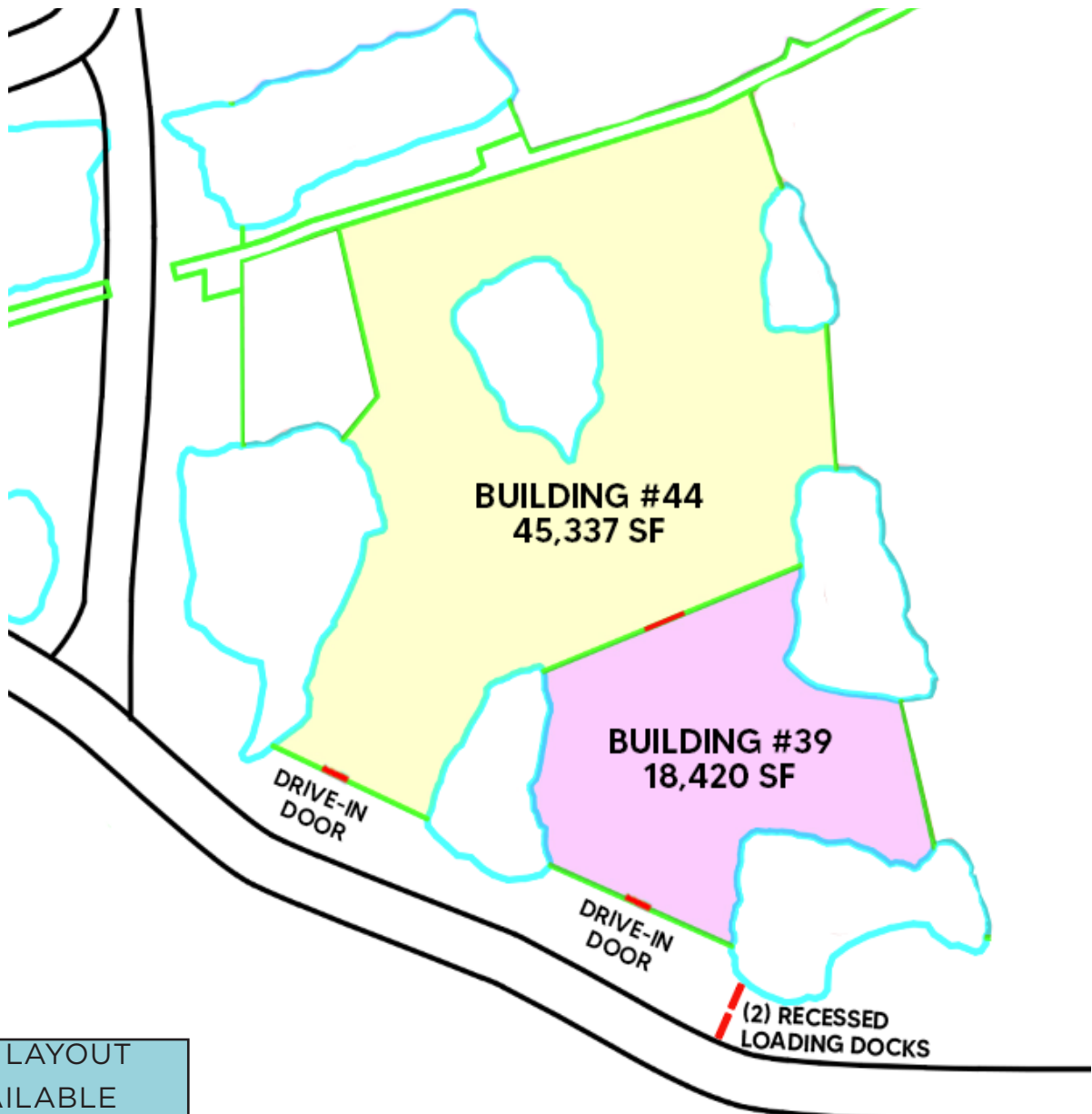
JAKE MILLS
Senior Associate
+1 502 719 3252
jmills@commercialkentucky.com

STEPHAN F. GRAY, SIOR
Senior Director
+1 502 719 3256
sgray@commercialkentucky.com

LOUISVILLE MEGA SPACE

BUILDING 39 | 18,420 SF

LOUISVILLEMEGASPACE.COM
1841 TAYLOR AVENUE
LOUISVILLE, KY 40213



CAD LAYOUT
AVAILABLE
UPON REQUEST

BLAKE SCINTA, CCIM
Senior Associate
+1 502 719 3230
bscinta@commercialkentucky.com

JAKE MILLS
Senior Associate
+1 502 719 3252
jmills@commercialkentucky.com

STEPHAN F. GRAY, SIOR
Senior Director
+1 502 719 3256
sgray@commercialkentucky.com