

# LOUISVILLE MEGA SPACE

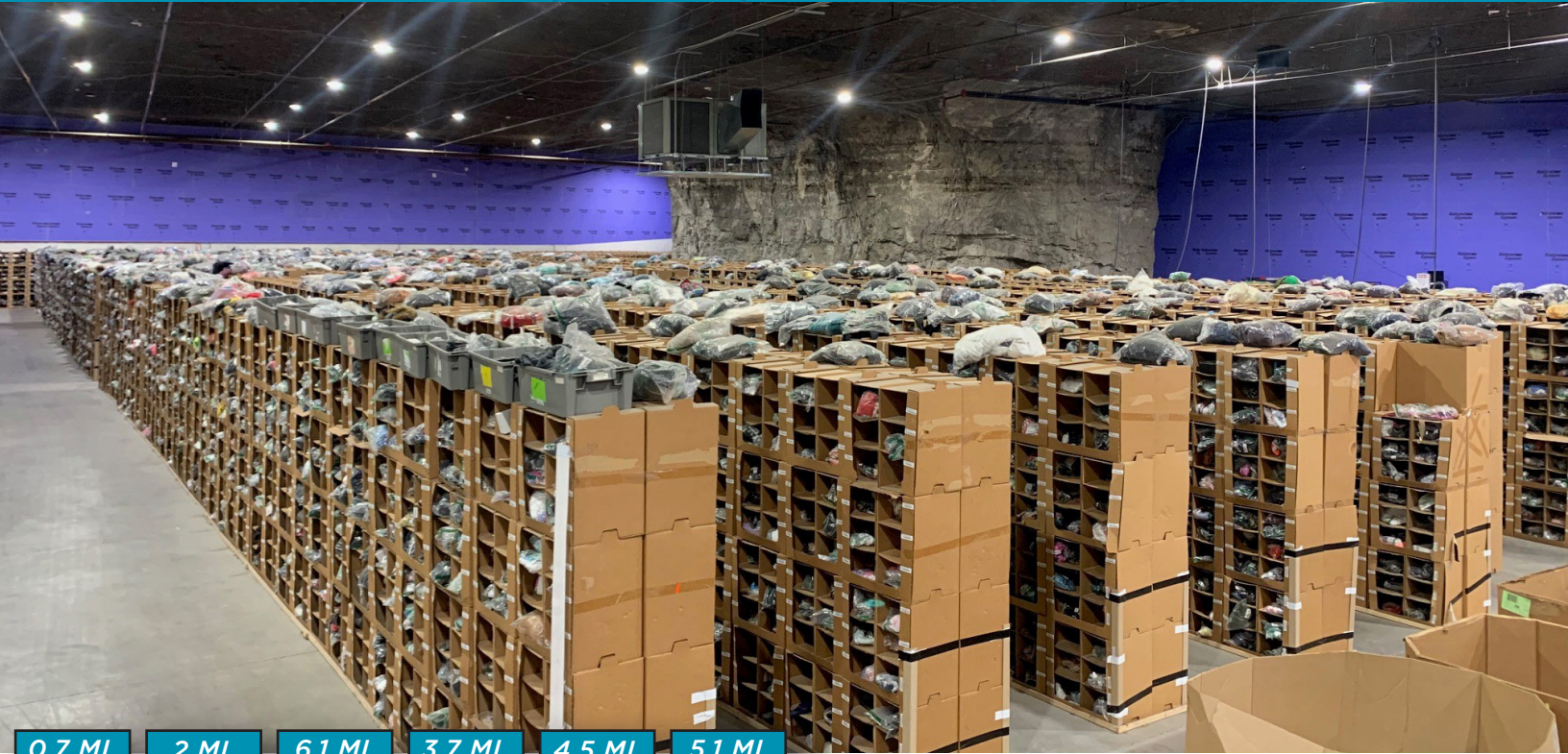
BUILDING 74 | 5,708 SF



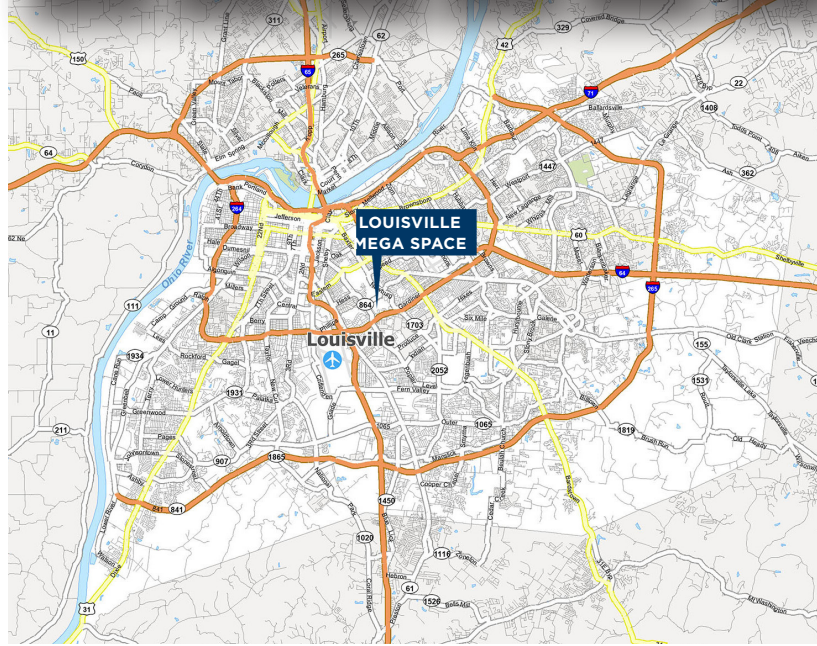
Commercial Kentucky

LOUISVILLEMEGASPACE.COM

1841 TAYLOR AVENUE  
LOUISVILLE, KY 40213



0.7 MI. TO 	2 MI. TO 	6.1 MI. TO 	3.7 MI. TO 	4.5 MI. TO 	5.1 MI. TO 
-------------------	-----------------	-------------------	-------------------	-------------------	-------------------



## BUILDING SPECS

BUILDING SIZE	5,708 SF (MAX CONTIGUOUS OF 18,336 SF)
DOCK DOORS	1 COMMON DOCK (9' X 10')
DRIVE-IN DOORS	1 (12' X 16')
CEILING HEIGHT	26'
OFFICE SIZE	BTS
FIRE PROTECTION	ESFR
BUILDING LIGHTING	LED
POWER	480 V / 3-PHASE
ACCESS	24 HRS / 7 DAYS PER WEEK
SECURITY	SECURE GATED ENTRANCES
TEMPERATURE	NATURAL AMBIENT TEMPERATURE OF 63 - 68 DEGREES YEAR ROUND

### BLAKE SCINTA, CCIM

Senior Associate  
+1 502 719 3230  
bscinta@commercialkentucky.com

### JAKE MILLS

Senior Associate  
+1 502 719 3252  
jmills@commercialkentucky.com

### STEPHAN F. GRAY, SIOR

Senior Director  
+1 502 719 3256  
sgray@commercialkentucky.com

# LOUISVILLE MEGA SPACE

BUILDING 74 | 5,708 SF



CAD LAYOUT  
AVAILABLE  
UPON REQUEST

**BLAKE SCINTA, CCIM**

Senior Associate  
+1 502 719 3230  
bscinta@commercialkentucky.com

**JAKE MILLS**

Senior Associate  
+1 502 719 3252  
jmills@commercialkentucky.com

**STEPHAN F. GRAY, SIOR**

Senior Director  
+1 502 719 3256  
sgray@commercialkentucky.com