

FOR LEASE  
**50 BROAD STREET**  
New York, NY



**For more information, please contact:**

**MITZI FLEXER**

Senior Director  
+1 718 307 6504  
mitzi.flexer@cushwake.com

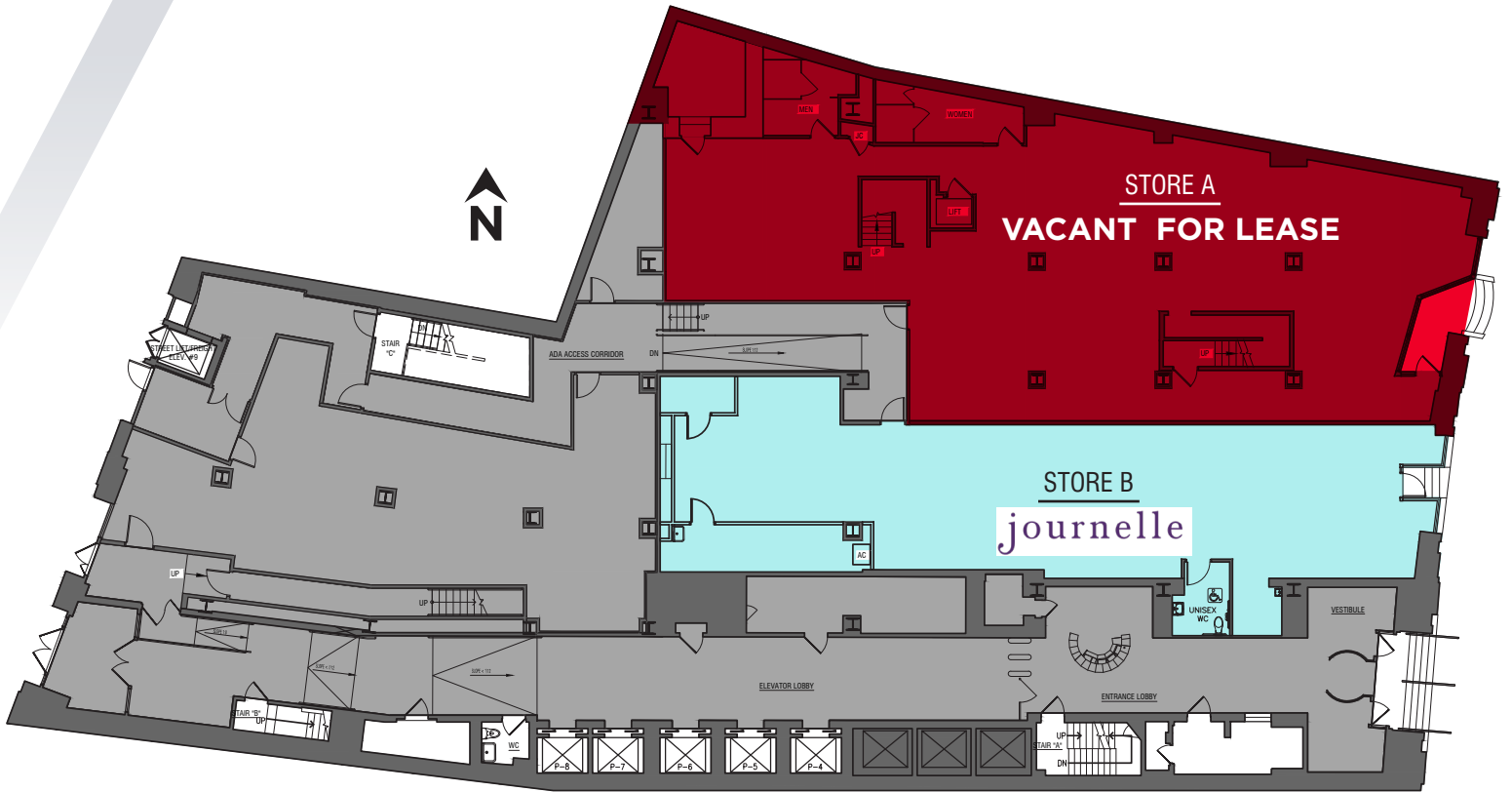
**JONATHAN FEIN**

Senior Director  
+1 212 709 0706  
jonathan.fein@cushwake.com

1290 Avenue of the Americas  
New York, NY 10104-6178  
+1 212 841 7500

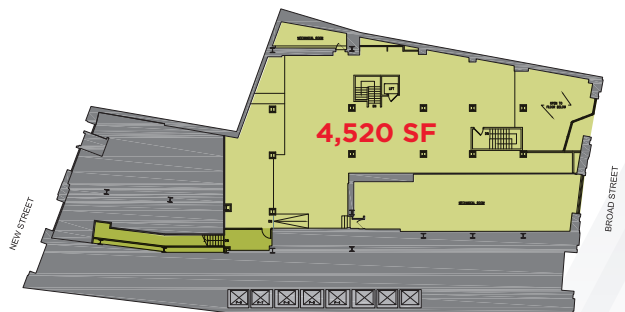
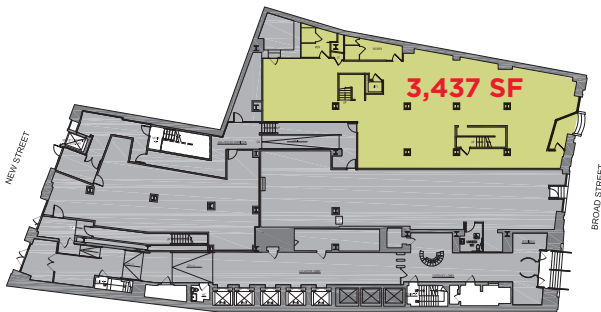
[cushmanwakefield.com](http://cushmanwakefield.com)

©2023 Cushman & Wakefield. All rights reserved. The information contained in this communication is strictly confidential. This information has been obtained from sources believed to be reliable but has not been verified. NO WARRANTY OR REPRESENTATION, EXPRESS OR IMPLIED, IS MADE AS TO THE CONDITION OF THE PROPERTY (OR PROPERTIES) REFERENCED HEREIN OR AS TO THE ACCURACY OR COMPLETENESS OF THE INFORMATION CONTAINED HEREIN, AND SAME IS SUBMITTED SUBJECT TO ERRORS, OMISSIONS, CHANGE OF PRICE, RENTAL OR OTHER CONDITIONS, WITHDRAWAL WITHOUT NOTICE, AND TO ANY SPECIAL LISTING CONDITIONS IMPOSED BY THE PROPERTY OWNER(S). ANY PROJECTIONS, OPINIONS OR ESTIMATES ARE SUBJECT TO UNCERTAINTY AND DO NOT SIGNIFY CURRENT OR FUTURE PROPERTY PERFORMANCE.



**GROUND FLOOR**

**MEZZANINE**



**SIZE** Ground 3,437 SF plus mezzanine  
**FRONTPAGE** 15 FT on Board Street  
**POSSESSION** Immediate

- COMMENTS**
- White Box delivery
  - Dedicated elevator in place connecting mezzanine with ground floor
  - Sprinkler and ADA complaint restrooms
  - At the base of office tower
  - No cooking on site









**62,000**

Residents

**\$6.5 BILLION**

Annual Spending Power

**6,313**

Hotel Rooms

**\$206,000**

Average Household Income

**6.7 MILLION**

SF of Retail Space

**14,200,000**

Visitors to Downtown

**87,979,022**

SF of Office Space

**496,584**

Daily Commuters

**12**

Subway Lines

**30**

Bus Routes

**25**

Citi Bike Stations

**For more information, please contact:**

**MITZI FLEXER**

Senior Director  
+1 718 307 6504  
mitzi.flexer@cushwake.com

**JONATHAN FEIN**

Senior Director  
+1 212 709 0706  
jonathan.fein@cushwake.com

1290 Avenue of the Americas  
New York, NY 10104-6178  
+1 212 841 7500

[cushmanwakefield.com](http://cushmanwakefield.com)

©2023 Cushman & Wakefield. All rights reserved. The information contained in this communication is strictly confidential. This information has been obtained from sources believed to be reliable but has not been verified. NO WARRANTY OR REPRESENTATION, EXPRESS OR IMPLIED, IS MADE AS TO THE CONDITION OF THE PROPERTY (OR PROPERTIES) REFERENCED HEREIN OR AS TO THE ACCURACY OR COMPLETENESS OF THE INFORMATION CONTAINED HEREIN, AND SAME IS SUBMITTED SUBJECT TO ERRORS, OMISSIONS, CHANGE OF PRICE, RENTAL OR OTHER CONDITIONS, WITHDRAWAL WITHOUT NOTICE, AND TO ANY SPECIAL LISTING CONDITIONS IMPOSED BY THE PROPERTY OWNER(S). ANY PROJECTIONS, OPINIONS OR ESTIMATES ARE SUBJECT TO UNCERTAINTY AND DO NOT SIGNIFY CURRENT OR FUTURE PROPERTY PERFORMANCE.