

FOR LEASE

Post Park Business Center

8719-8861 Boehning Lane, Indianapolis, IN 46219



PROPERTY HIGHLIGHTS

Excellent visibility; west building fronts I-70

Dock and drive-in access

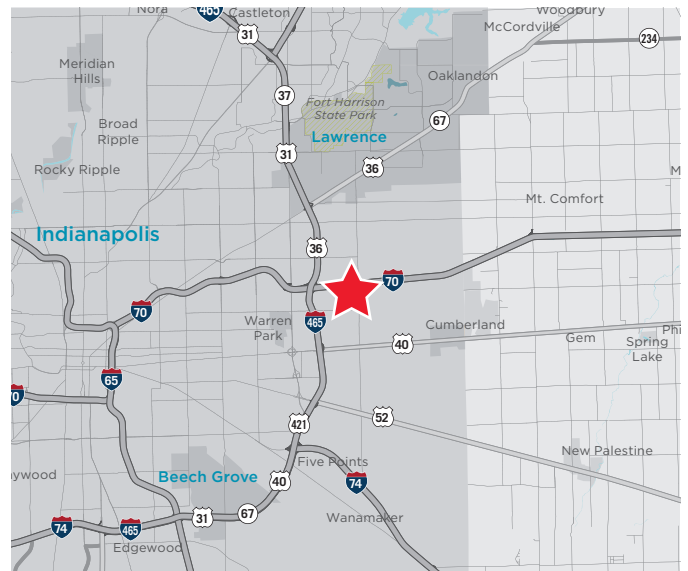
Clear height: 16' - 18'

Double row parking

Easy access to I-70 and I-465 via Post Road

Zoned CS

Wet sprinkler system



KEVIN W. ARCHER

Senior Director
+1 317 218 7217
kevin.archer@cushwake.com

TODD T. VANNATTA, SIOR

Executive Director
+1 317 639 0455
todd.vannatta@cushwake.com



**CUSHMAN &
WAKEFIELD**

cushmanwakefield.com

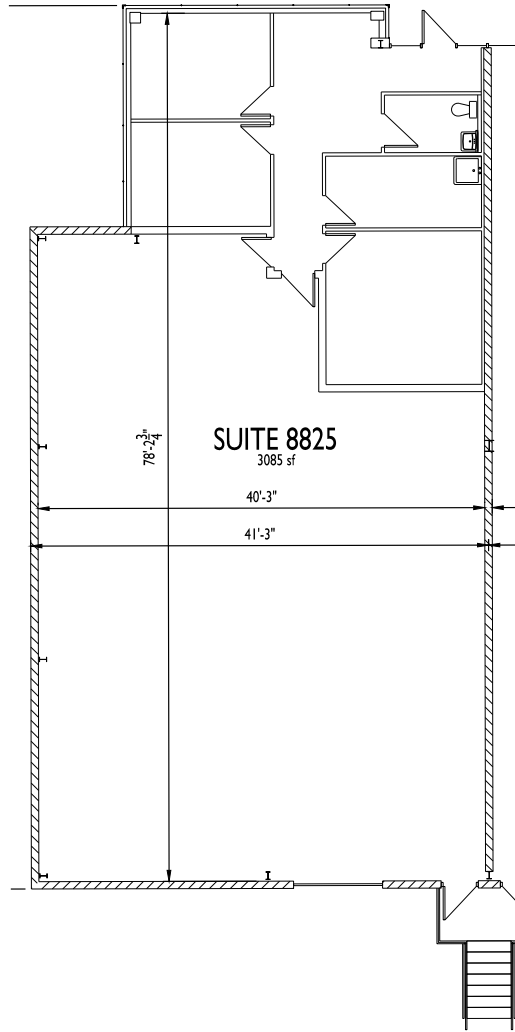
FOR LEASE

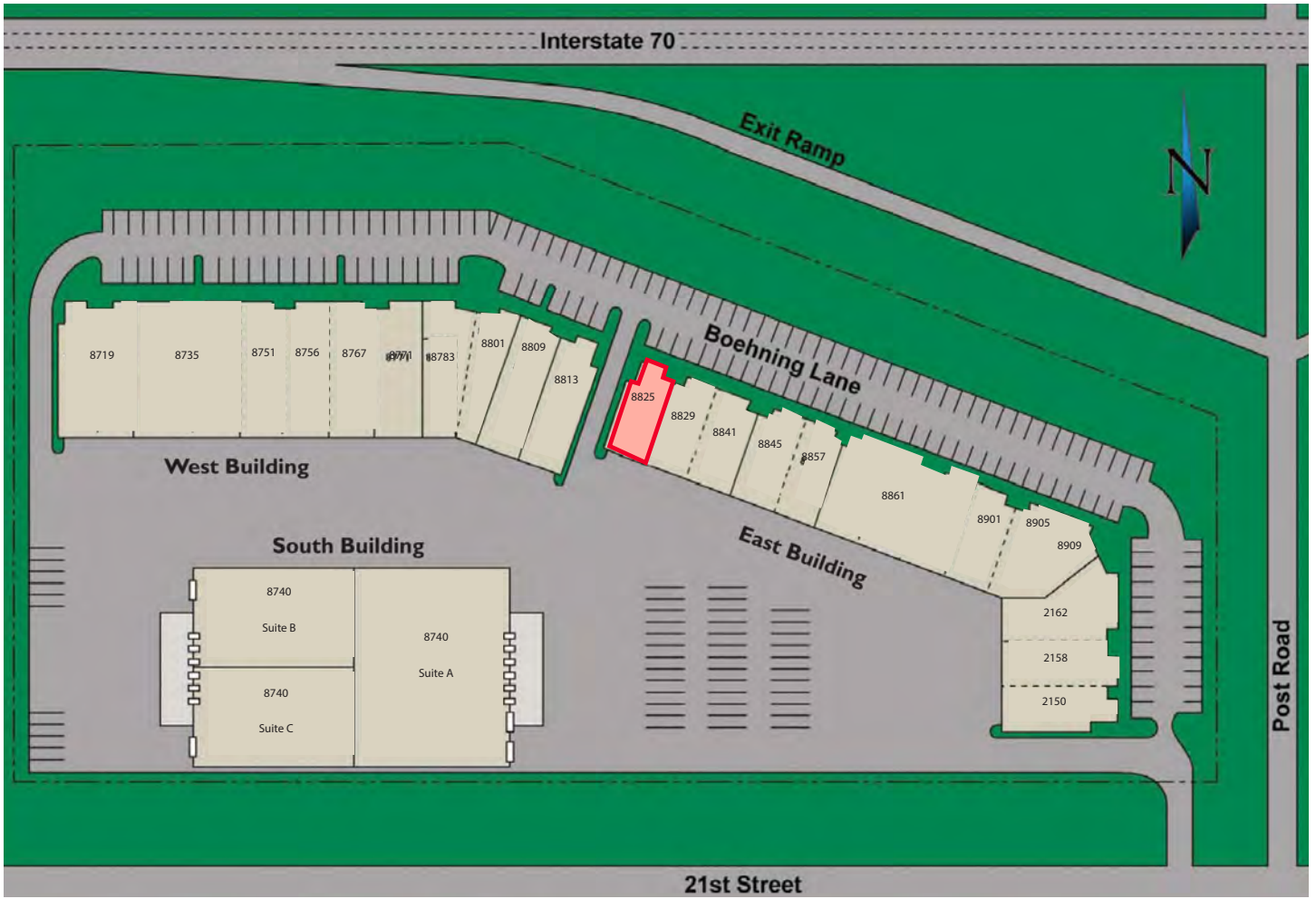
Post Park Business Center

8719-8861 Boehning Lane, Indianapolis, IN 46219

Suite 8825

3,085 SF





Space Available

Suite	Total SF	Office SF	Docks/D-I	Clear Ht	Base Rate/SF	OPEX	Mo. Rent
8825	3,085 SF	939 SF	1/0	16' - 18'	\$7.25	\$2.90	\$2,609.40

FOR LEASE

Post Park Business Center

8719-8861 Boehning Lane, Indianapolis, IN 46219



Aerial



KEVIN W. ARCHER

Senior Director
+1 317 218 7217
kevin.archer@cushwake.com

TODD T. VANNATTA, SIOR

Executive Director
+1 317 639 0455
todd.vannatta@cushwake.com

One American Square, Suite 1800
Indianapolis, IN 46282
Main +1 317 639 0515
Fax +1 317 639 0504
cushmanwakefield.com