

RETAIL SPACE FOR LEASE

150

CENTRAL PARK SOUTH

SOUTH BLOCK OF WEST 59TH STREET
BETWEEN AVENUE OF THE AMERICAS AND SEVENTH AVENUE



CUSHMAN &
WAKEFIELD

150 CENTRAL PARK SOUTH

**SOUTH BLOCK OF WEST 59TH STREET
BETWEEN AVENUE OF THE
AMERICAS AND SEVENTH AVENUE**

AVAILABILITY OVERVIEW:

GROUND FLOOR:	9,974 SF
LOWER LEVEL:	650 SF
TOTAL:	10,624 SF

FRONTAGE:

- APPROXIMATELY 55 FEET ON CENTRAL PARK SOUTH

POSSESSION:

- IMMEDIATE

TERM:

- LONG TERM

LEASE TYPE:

- DIRECT

ASKING RENT:

- UPON REQUEST

HIGHLIGHTS:

- Outstanding retail opportunity on Central Park South at the base of an exquisitely maintained and operated cooperative building
- All upscale uses considered – Ideal for personal services, medical and wellness operators
- Approximately 55 feet of frontage directly across from Central Park, spanning a double door entry and windows on West 59th Street
- Dedicated signage awning with three sides of visibility

CURRENT CONFIGURATION:

The offering is currently built as a high-end spa and wellness facility with recently renovated infrastructure. The existing configuration contains the following:

- Welcome area and lobby
- Upscale men's and women's locker room wings with showers, restrooms and changing areas
- Two expansive fitness studios
- Private treatment rooms with dedicated waiting area
- Storage and laundry facilities

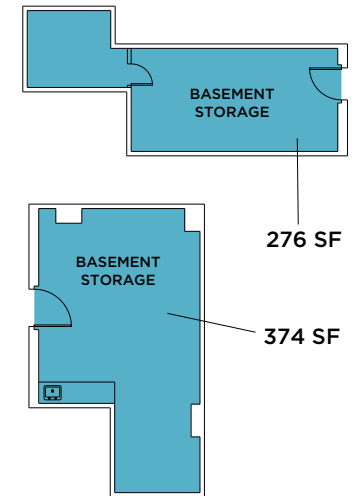
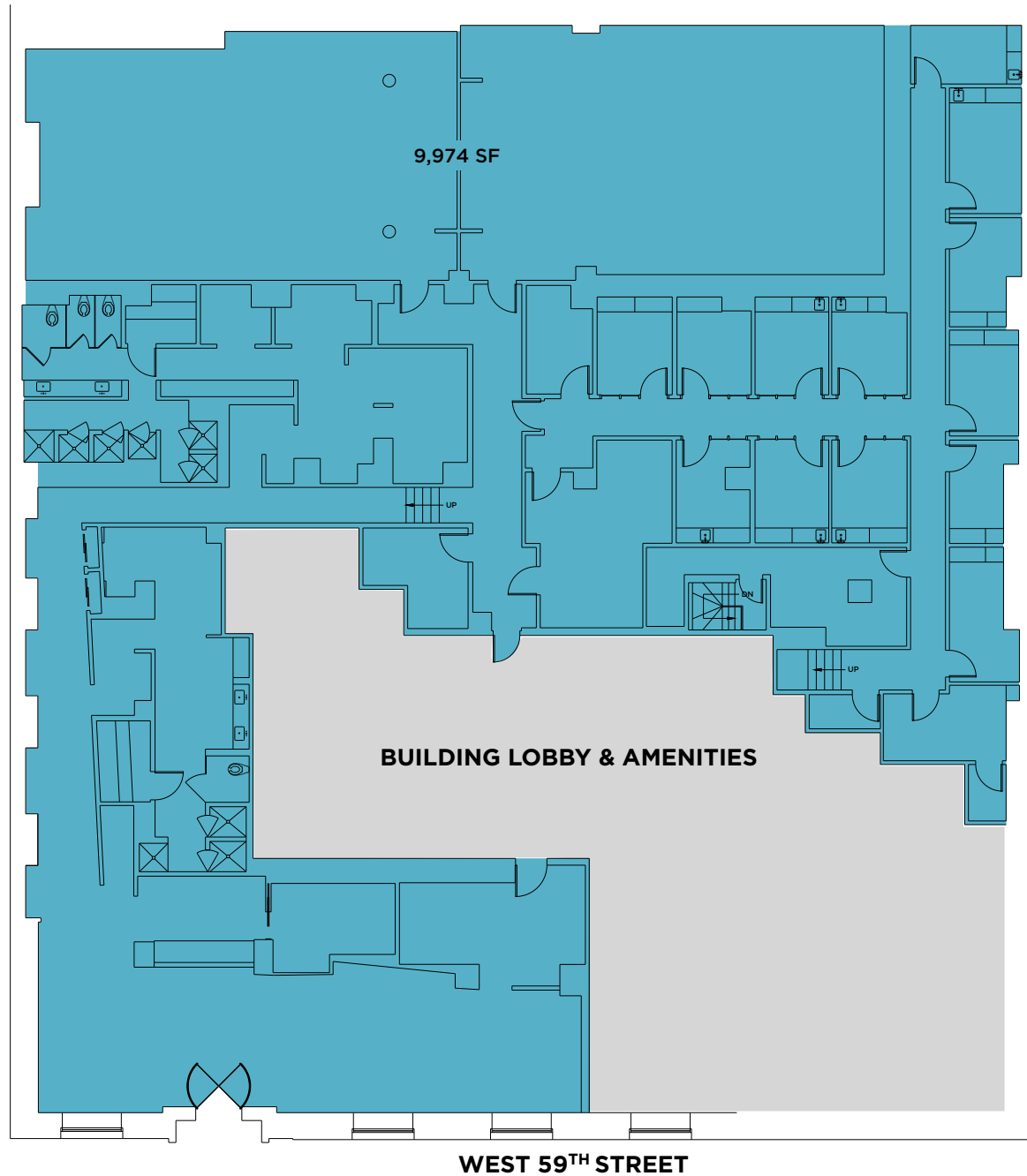


SIGNAGE

150 CENTRAL PARK SOUTH

GROUND FLOOR

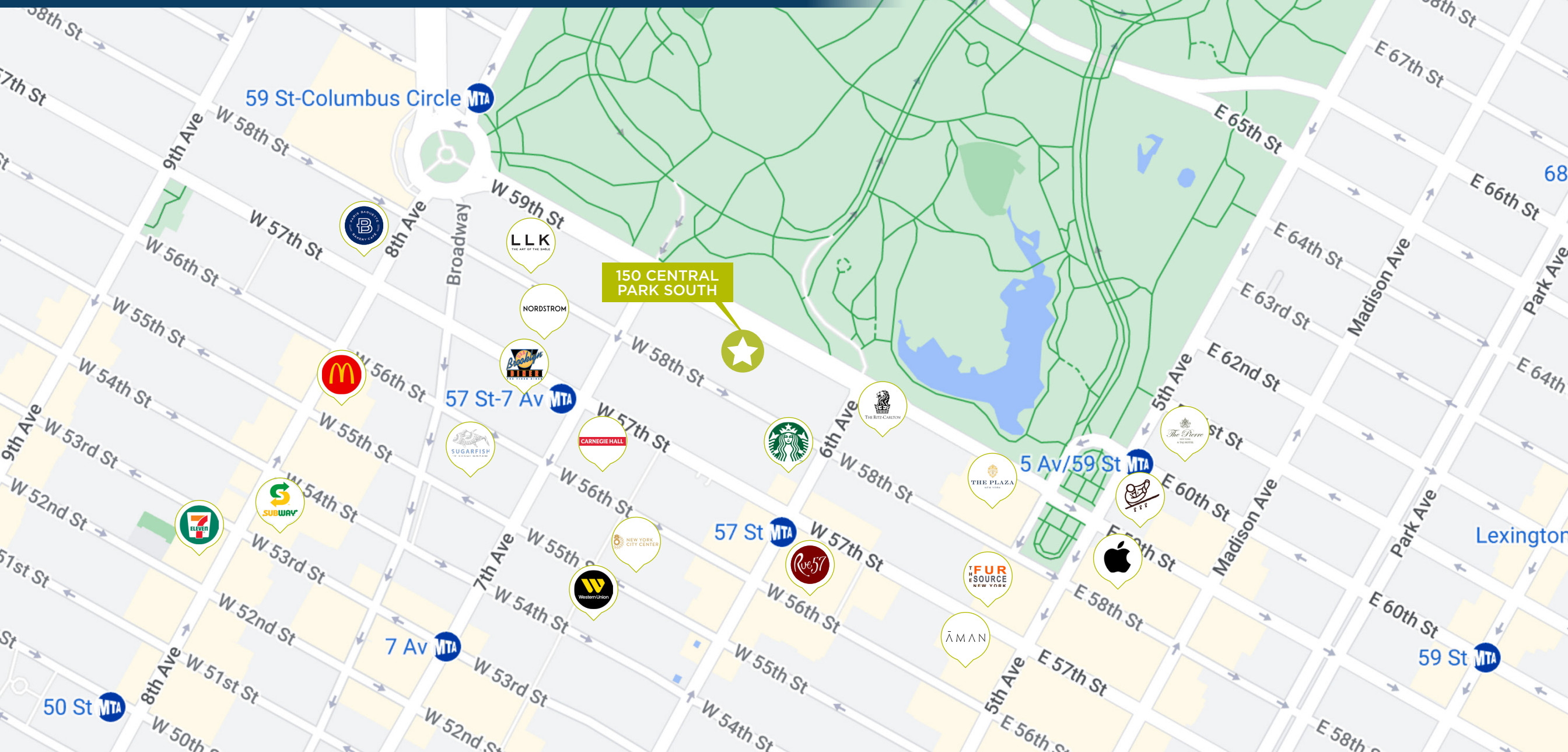
EXISTING CONFIGURATION



EXISTING INTERIOR CONDITION



150 CENTRAL PARK SOUTH NEIGHBORHOOD OVERVIEW



150
CENTRAL PARK SOUTH

SOUTH BLOCK OF WEST 59TH STREET
BETWEEN AVENUE OF THE AMERICAS AND SEVENTH AVENUE

SIGNAGE

CONTACT INFORMATION

Please contact us with leasing inquiries:

ALAN SCHMERZLER

+1 212 841 5930

alan.schmerzler@cushwake.com

SEAN MORAN

+1 212 841 7668

sean.moran@cushwake.com

PATRICK O'ROURKE

+1 212 660 7777

patrick.orourke@cushwake.com

CATHERINE MERCK

+1 212 698 2621

catherine.merck@cushwake.com

©2024 Cushman & Wakefield. All rights reserved. The information contained in this communication is strictly confidential. This information has been obtained from sources believed to be reliable but has not been verified. NO WARRANTY OR REPRESENTATION, EXPRESS OR IMPLIED, IS MADE AS TO THE CONDITION OF THE PROPERTY (OR PROPERTIES) REFERENCED HEREIN OR AS TO THE ACCURACY OR COMPLETENESS OF THE INFORMATION CONTAINED HEREIN, AND SAME IS SUBMITTED SUBJECT TO ERRORS, OMISSIONS, CHANGE OF PRICE, RENTAL OR OTHER CONDITIONS, WITHDRAWAL WITHOUT NOTICE, AND TO ANY SPECIAL LISTING CONDITIONS IMPOSED BY THE PROPERTY OWNER(S). ANY PROJECTIONS, OPINIONS OR ESTIMATES ARE SUBJECT TO UNCERTAINTY AND DO NOT SIGNIFY CURRENT OR FUTURE PROPERTY PERFORMANCE.