

FOR LEASE  
2200 SW 45<sup>th</sup> STREET  
Dania Beach, Florida



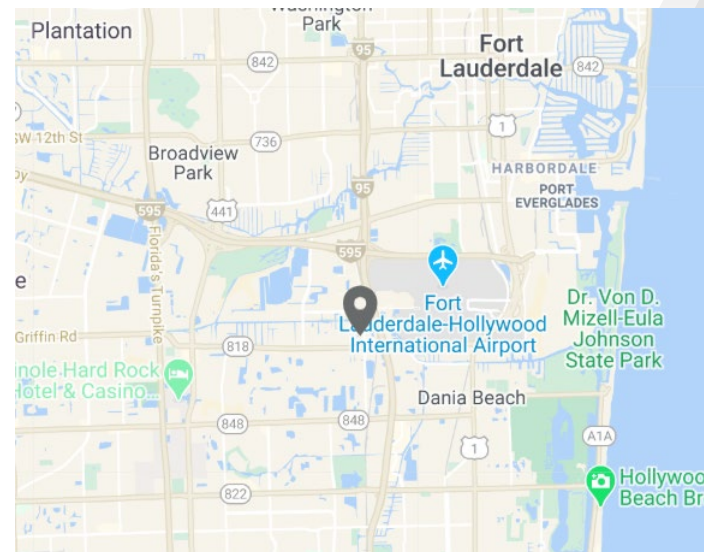
Two-Story Office Space for Lease



## 32,812 SF AVAILABLE

### Property Highlights

- Year Built: 1984
- 2-Story Office
- 12' Ceilings
- 285 Surface Parking Spaces
- Excellent location with immediate access to I-95, Griffin Road, DCOTA and Fort Lauderdale International Airport
- Virtual Tour: [Click Here](#)

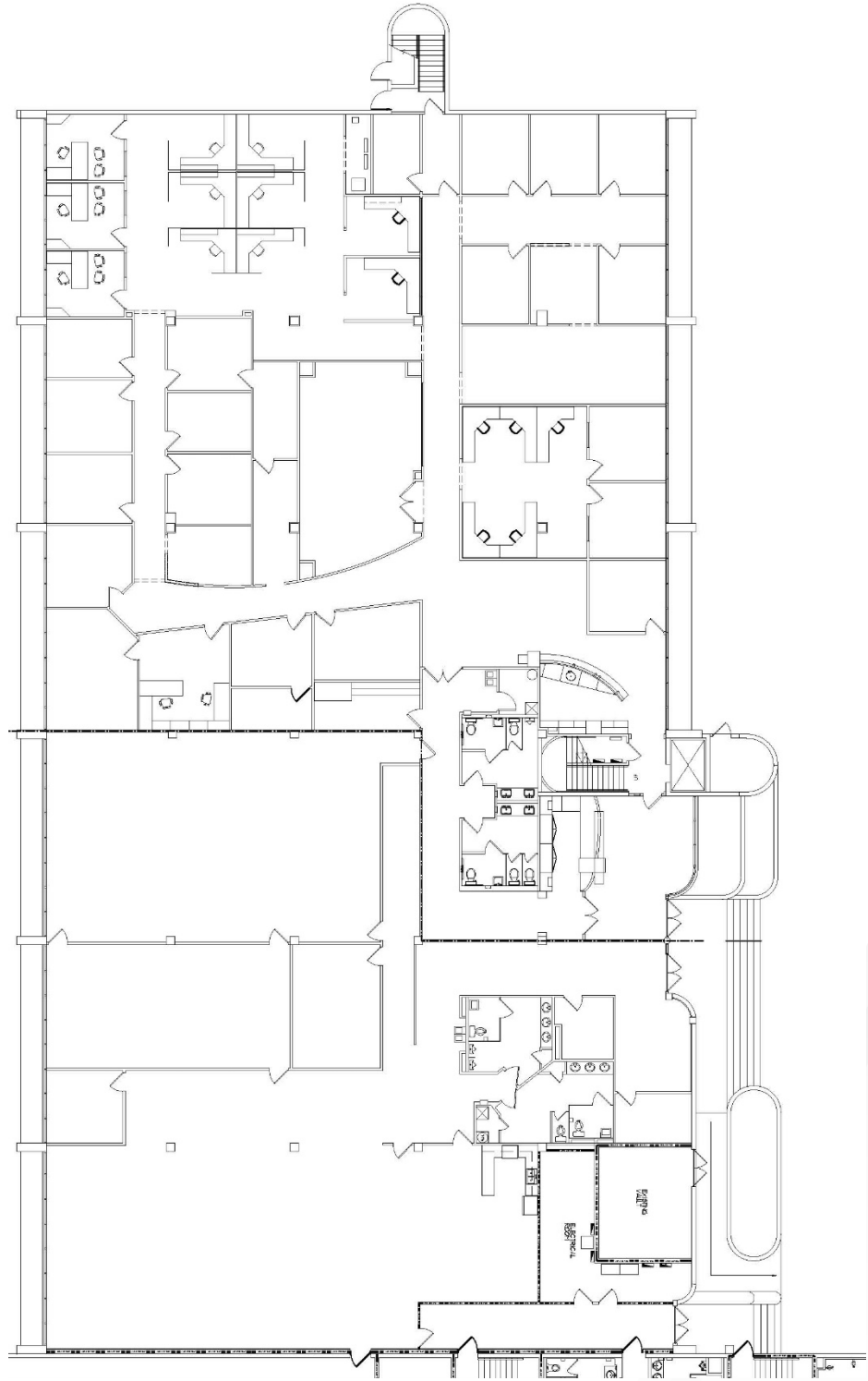


### Contact

**Matthew G. McAllister**  
Director  
+1 561 901 5216  
[matthew.mcallister@cushwake.com](mailto:matthew.mcallister@cushwake.com)

**Christopher Thomson, SIOR**  
Executive Director  
+1 561 301 2390  
[christopher.thomson@cushwake.com](mailto:christopher.thomson@cushwake.com)

First Floor:  
+/-11,936 SF

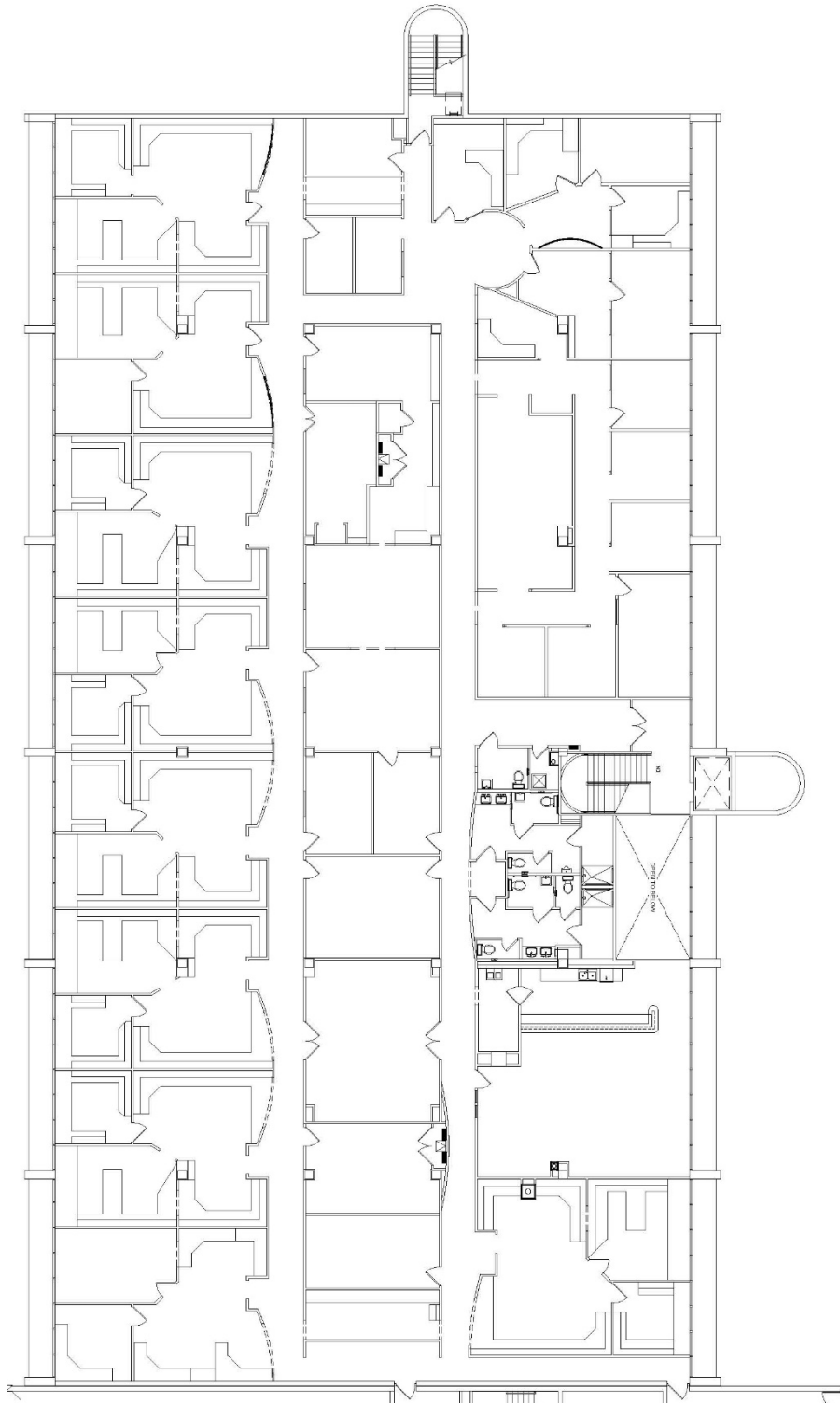


## Contact

**Matthew G. McAllister**  
Director  
+1 561 901 5216  
[matthew.mcallister@cushwake.com](mailto:matthew.mcallister@cushwake.com)

**Christopher Thomson, SIOR**  
Executive Director  
+1 561 301 2390  
[christopher.thomson@cushwake.com](mailto:christopher.thomson@cushwake.com)

Second Floor:  
+/-20,533 SF



## Contact

**Matthew G. McAllister**  
Director  
+1 561 901 5216  
[matthew.mcallister@cushwake.com](mailto:matthew.mcallister@cushwake.com)

**Christopher Thomson, SIOR**  
Executive Director  
+1 561 301 2390  
[christopher.thomson@cushwake.com](mailto:christopher.thomson@cushwake.com)