



# OFFICE SUBLEASE 3399 Peachtree

3399 Peachtree Road, Atlanta, GA 30326



**20,838 RSF**

**\$30.00/SF**

**3/31/2026**

**IMMEDIATE**

AVAILABLE ON  
8<sup>TH</sup> FLOOR

FULL-SERVICE  
QUOTED RATE

SUBLEASE  
EXPIRATION

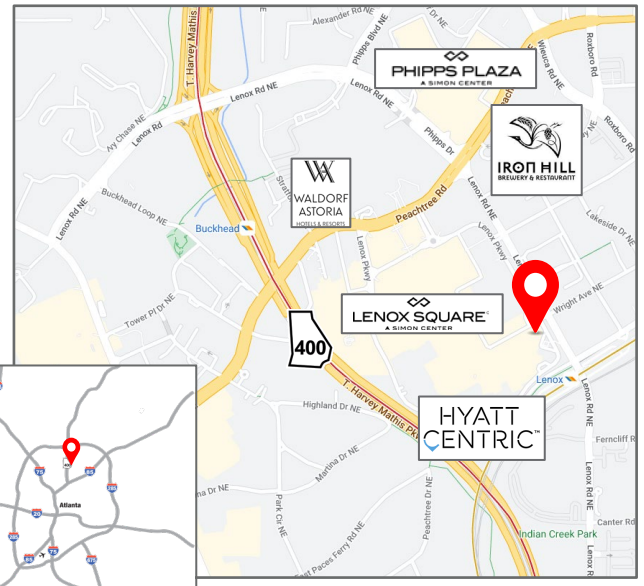
OCCUPANCY UPON  
SUBLEASE EXECUTION

## Space Features & Highlights

- *Highly upgraded and improved space with modern finishes and excellent Buckhead views*
- Elevator lobby exposure
- Furniture included
- Features reception, conference room, open area breakroom and game area, 160 workstations, 8 offices/huddle rooms and 4 quiet booths

## Excellent Amenities & Location

- New on-site café, health club, indoor/outdoor lounges and collaboration spaces
- Direct access to GA-400, MARTA and JW Marriott hotel
- Walkable to abundant hotels, restaurants and amenities



**APRIL PARRISH**  
Executive Director  
(404) 682 3413  
[april.parrish@cushwake.com](mailto:april.parrish@cushwake.com)  
License #301359

**ERIN SMITH**  
Managing Director  
(404) 682 3444  
[erin.smith@cushwake.com](mailto:erin.smith@cushwake.com)  
License #337500

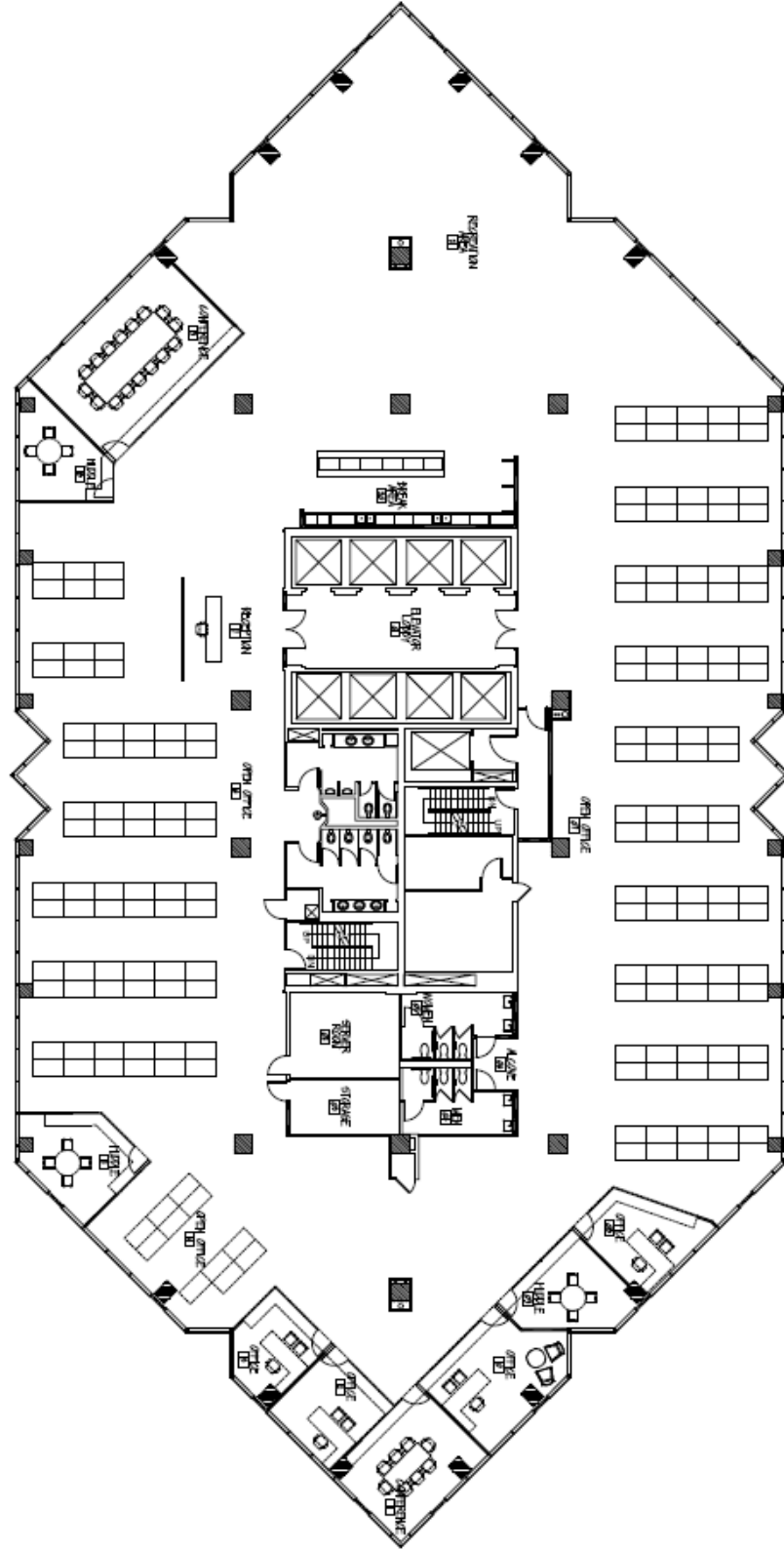
**CUSHMAN & WAKEFIELD, INC.**  
1180 Peachtree Street, NE, Suite 3100  
Atlanta, Georgia 30309  
[www.cushmanwakefield.com](http://www.cushmanwakefield.com)

The depiction in the included photograph of any person, entity, sign, logo or property, other than Cushman & Wakefield's (C&W) client and the property offered by C&W, is incidental only, and is not intended to connote any affiliation, connection, association, sponsorship or approval by or between that which is incidentally depicted and C&W or its client. This listing shall not be deemed an offer to lease, sublease or sell such property; and, in the event of any transaction for such property, no commission shall be earned by or payable to any cooperating broker except if otherwise provided pursuant to the express terms, rates and conditions of C&W's agreement with its principal, if, as and when such commission (if any) is actually received from such principal. (A copy of the rates and conditions referred to above with respect to this property is available upon request.)

# 20,838 SF FOR SUBLEASE

## Suite 800: 20,838 SF

- 174 workstations
- 5 conference rooms
- 4 offices
- Reception
- Break area



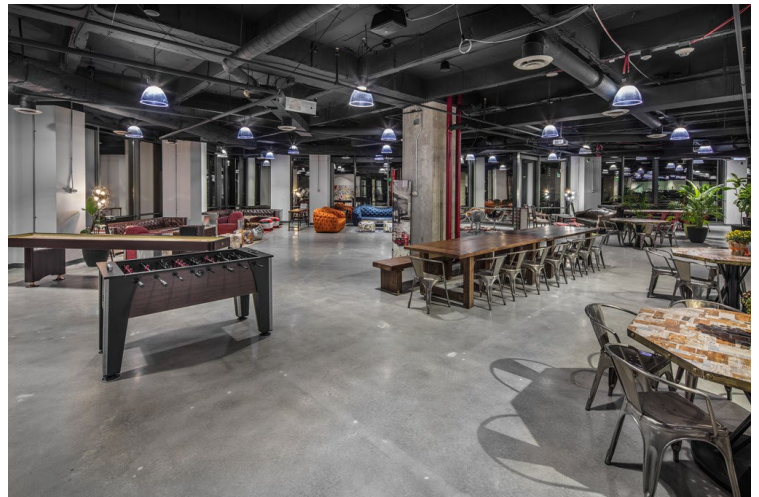
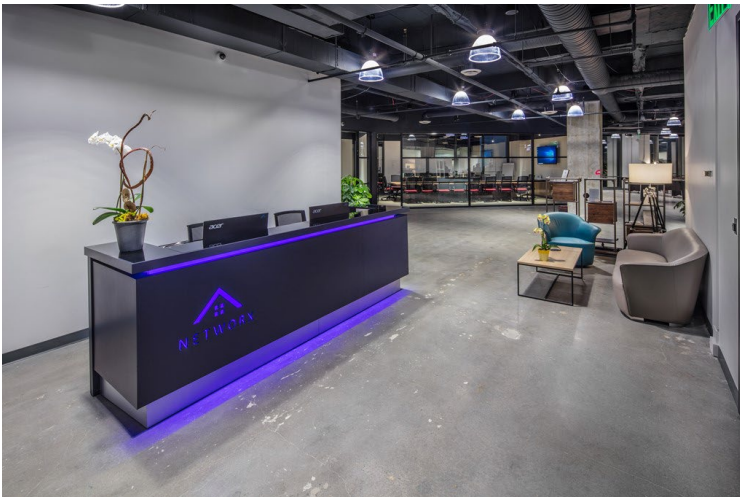
**APRIL PARRISH**  
Executive Director  
(404) 682 3413  
[april.parrish@cushwake.com](mailto:april.parrish@cushwake.com)  
License #301359

**ERIN SMITH**  
Managing Director  
(404) 682 3444  
[erin.smith@cushwake.com](mailto:erin.smith@cushwake.com)  
License #337500

**CUSHMAN & WAKEFIELD, INC.**  
1180 Peachtree Street, NE, Suite 3100  
Atlanta, Georgia 30309  
[www.cushmanwakefield.com](http://www.cushmanwakefield.com)



# 20,838 SF FOR SUBLEASE



**APRIL PARRISH**  
Executive Director  
(404) 682 3413  
[april.parrish@cushwake.com](mailto:april.parrish@cushwake.com)  
License #301359

**ERIN SMITH**  
Managing Director  
(404) 682 3444  
[erin.smith@cushwake.com](mailto:erin.smith@cushwake.com)  
License #337500

**CUSHMAN & WAKEFIELD, INC.**  
1180 Peachtree Street, NE, Suite 3100  
Atlanta, Georgia 30309  
[www.cushmanwakefield.com](http://www.cushmanwakefield.com)

The depiction in the included photograph of any person, entity, sign, logo or property, other than Cushman & Wakefield's (C&W) client and the property offered by C&W, is incidental only, and is not intended to connote any affiliation, connection, association, sponsorship or approval by or between that which is incidentally depicted and C&W or its client. This listing shall not be deemed an offer to lease, sublease or sell such property; and, in the event of any transaction for such property, no commission shall be earned by or payable to any cooperating broker except if otherwise provided pursuant to the express terms, rates and conditions of C&W's agreement with its principal, if, as and when such commission (if any) is actually received from such principal. (A copy of the rates and conditions referred to above with respect to this property is available upon request.)