

100 INTERNATIONAL DRIVE

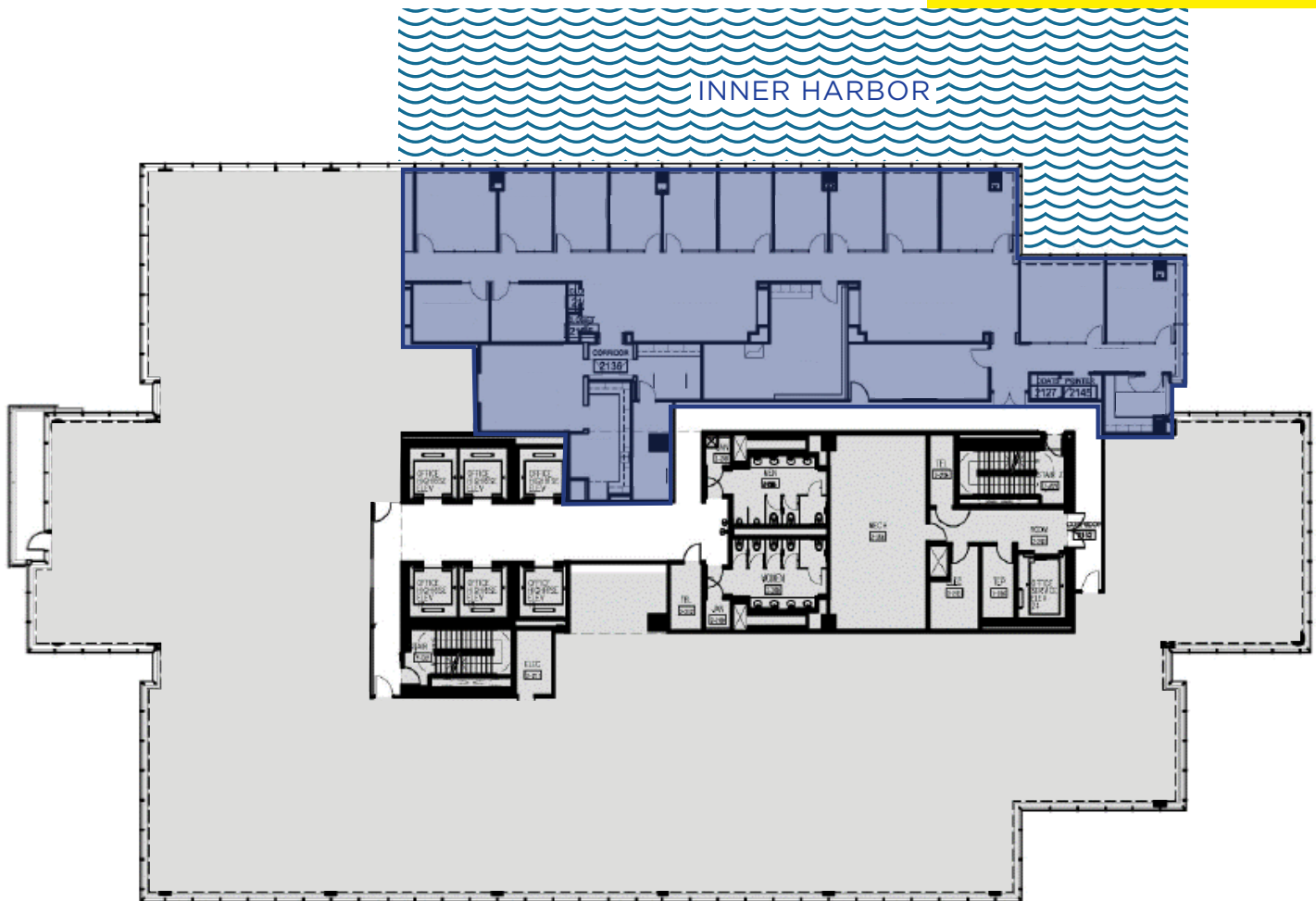


BUILDING FEATURES

24-STORY, 613,006 SF CLASS-A OFFICE BUILDING

- Garage entrance monitored by car mounted AVI-card system allowing employees immediate and seamless entry
- State-of-the-art destination dispatch elevator system reducing tenant wait and travel times
- 2-story atrium lobby
- 24-hour security staffing and electronic security system
- Full-service waterfront cafeteria providing high quality, price-sensitive dining and outdoor terrace
- 245 KW back-up generator capacity for tenants and redundant power with dual feeds from separate substations
- 1/1,000 in-building parking and 2/1,000 in various area garages for a total of 3/1,000
- In-building amenities include Under Armour Brand House, J.Crew, Johns Hopkins Carey Business School, Maximón, Cook Café, Anthropologie, Azumi and The Bygone
- BOMA 360 Designation

27,185 SF FLOOR PLATE



21 ST FLOOR
6,562 RSF



available space features

**SPECTACULAR
HARBOR VIEWS**

**RAISED-ACCESS
FLOORING**

**HIGH END
FINISH LEVEL**

**SUPER FINE-
LINE CEILING
SYSTEM**

Brian P. Wyatt
T: +1 410 347 7804
brian.wyatt@cushwake.com

Bronwyn LeGette
T: +1 410 347 7565
bronwyn.legette@cushwake.com

David J. Downey, Jr., CCIM
T: +1 410 347 7536
david.downey@cushwake.com