

CUSHMAN &  
WAKEFIELD

Ottawa

# The MacDonald Building

123 Slater Street

APPROX. 4,500 SF OF OFFICE SPACE FOR SUBLEASE



## Suite Highlights

- Open concept
- Collaborative work space
- Private offices
- Meeting rooms
- Kitchen
- Boardroom
- Waiting area

## Building Amenities

- Two Storey Lobby
- Fully Remodeled washrooms
- Property Manager on site
- Upgraded mechanical & electrical systems
- BOMA Best Certified

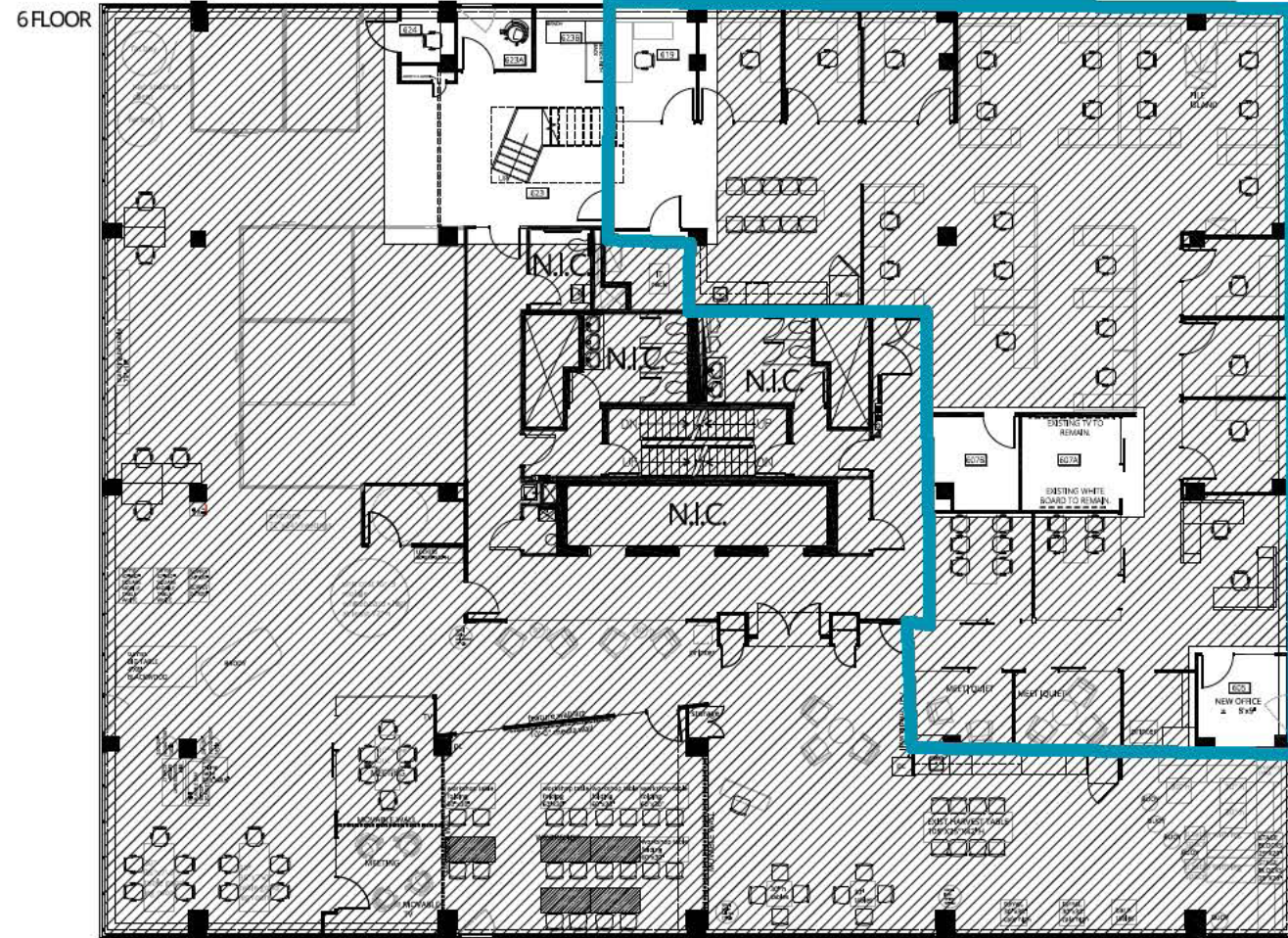


Excellent Central Business District Office Space

# Floorplan

6th Floor | Suite 600

APPROX. 4,500 SF



PRIVATE OFFICE



MEETING ROOM



BOARDROOM



KITCHEN



OPEN WORKSPACE



PRIVATE OFFICE



NET RENT: CONTACT LISTING AGENT  
ADDITIONAL RENT: \$18.25 (2024)  
SUBLEASE EXPIRY: MARCH 31, 2027

# Area Amenities

WITHIN 1 KM

## RESTAURANTS

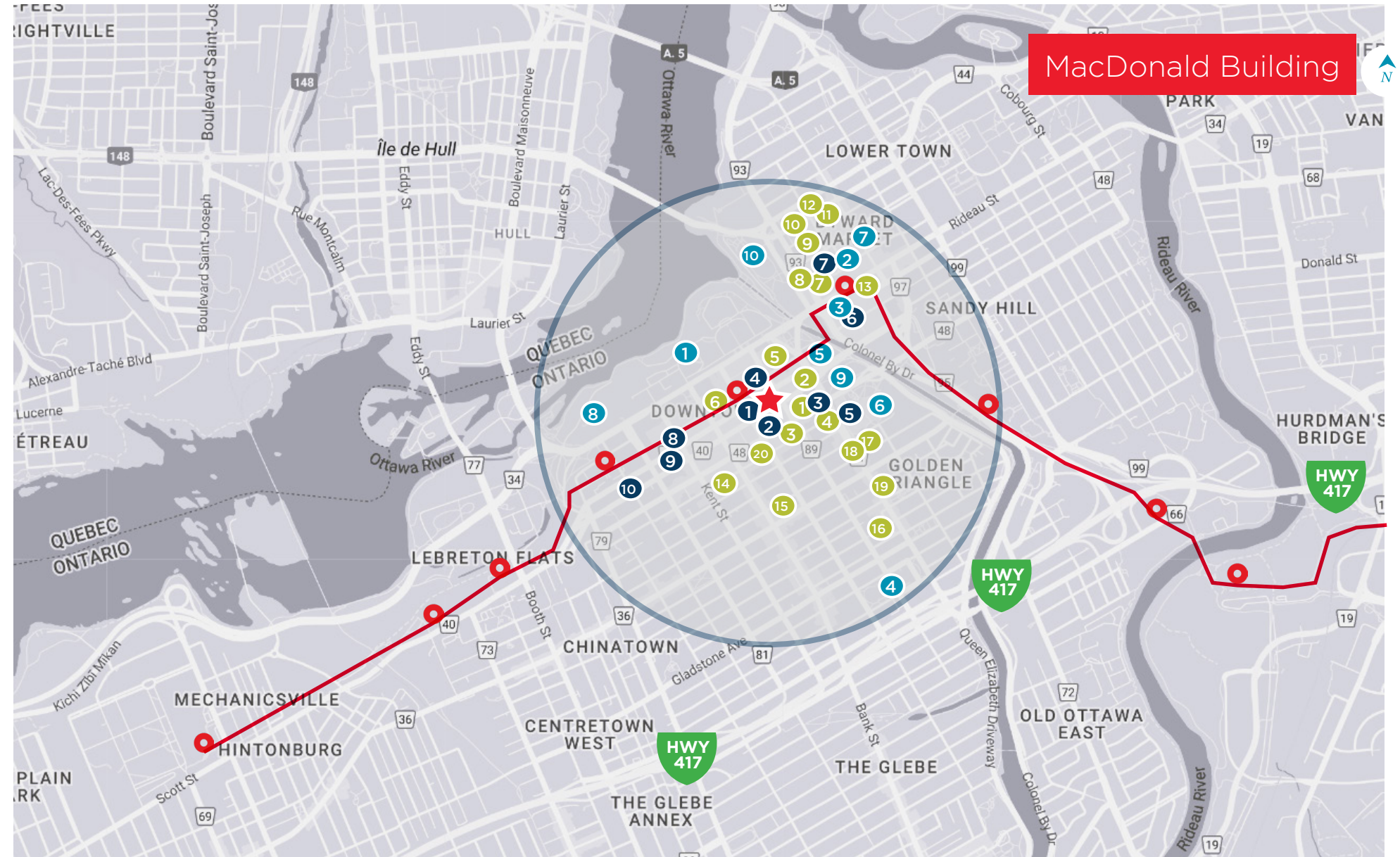
- |                       |                        |
|-----------------------|------------------------|
| 1. COCOTTE BISTRO     | 11. KEG STEAKHOUSE     |
| 2. GRILL 41           | 12. HEART & CROWN      |
| 3. GROUNDED KITCHEN   | 13. JOEY RIDEAU        |
| 4. BROWNS SOCIALHOUSE | 14. NORTH & NAVY       |
| 5. RIVIERA OTTAWA     | 15. MAMMA TERESA       |
| 6. RABBITHOLE         | 16. PURE KITCHEN       |
| 7. METROPOLITAIN      | 17. THE WHALESBONE     |
| 8. MILESTONES         | 18. JOHNNY FARINA      |
| 9. SOCIAL LOUNGE      | 19. HARMONS STEAKHOUSE |
| 10. PLAY FOOD & WINE  | 20. TOSCA RISTORANTE   |

## LANDMARKS /SHOPPING

- |                              |                            |
|------------------------------|----------------------------|
| 1. PARLIAMENT HILL           | 6. CITY HALL               |
| 2. RIDEAU CENTRE             | 7. BYWARD MARKET           |
| 3. SHAW CENTRE               | 8. SUPREME COURT OF CANADA |
| 4. CANADIAN MUSEUM OF NATURE | 9. CONFEDERATION PARK      |
| 5. NATIONAL ARTS CENTRE      | 10. MAJOR'S HILL PARK      |

## HOTELS

- |                    |                     |
|--------------------|---------------------|
| 1. SHERATON OTTAWA | 6. THE WESTIN       |
| 2. ARC THE HOTEL   | 7. FAIRMONT CHATEAU |
| 3. METCALFE HOTEL  | 8. OTTAWA MARRIOTT  |
| 4. RESTAYS LUXURY  | 9. DELTA HOTELS     |
| 5. LORD ELGIN      | 10. HOLIDAY INN     |



Area Demographics  
Within 1 KM

5,970  
POPULATION

36.4  
MEDIAN AGE

70,000  
AVG HOUSEHOLD INCOME

100  
WALK SCORE



## Contact

KIMBERLEY HALL  
Vice President  
Sales Representative  
+1 613 780 1585  
[khall@cwottawa.com](mailto:khall@cwottawa.com)



**CUSHMAN &  
WAKEFIELD**  
Ottawa