



Disponibilités

8148
Ronson Rd.

8170
Ronson Rd.

4818 & 4818.5
Ronson Ct.

8222 & 8224
Ronson Rd.

4819 & 4819.5
Ronson Ct.

8274 & 8276
Ronson Rd.

8254 & 8256
Ronson Rd.

8248 & 8250
Ronson Rd.

Fitness
Tenant Lounge &
Conference Space

8145
Ronson Rd.

8205
Ronson Rd.

Outdoor
People Space

8195
Ronson Rd.

8245
Ronson Rd.

Outdoor
People Space

8290
Vickers St.

8380
Vickers St.

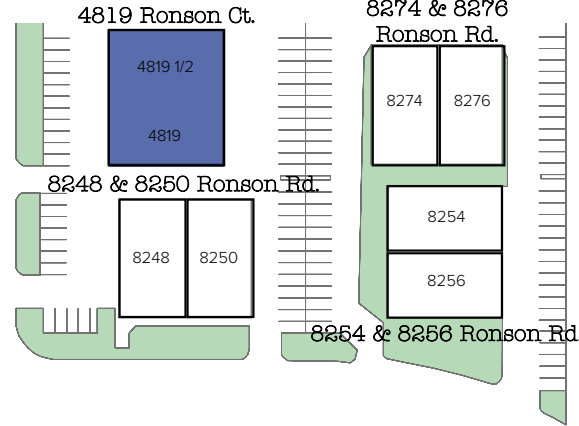
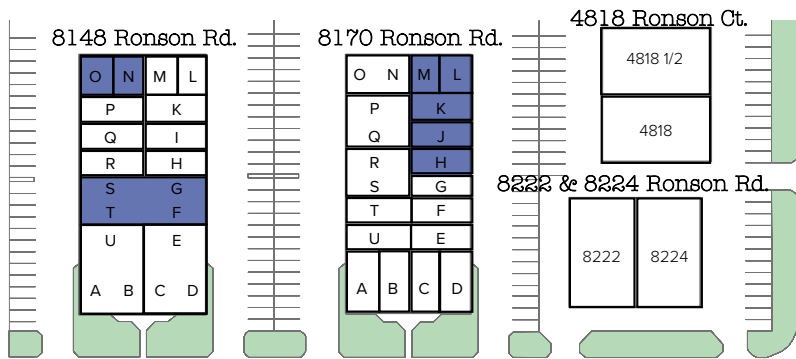
8340
Vickers St.

Outdoor
People Space

8250
Vickers St.

 Central

Availability



Industrial

1. 8148 Ronson Rd - F,G,S,T - 3,920 SF - available now
2. 8148 Ronson Rd - N,O - 1,520 SF - available december 2024
3. 8170 Ronson Rd - K,L,M - 2,500 SF - available january 2025
4. 8170 Ronson Rd - J - 980 SF - available january 2025
5. 8170 Ronson Rd - H - 980 SF - available january 2025
6. 8195 Ronson Rd - D - 1,620 SF - available september 2024
7. 8195 Ronson Rd - G - 1,620 SF - available september 2024
8. 8340 Vickers St - G - 1,620 SF - available now
9. 8380 Vickers St - H,I - 3,132 SF - available now
10. 4819 Ronson Ct - 10,400 SF - available now

Office

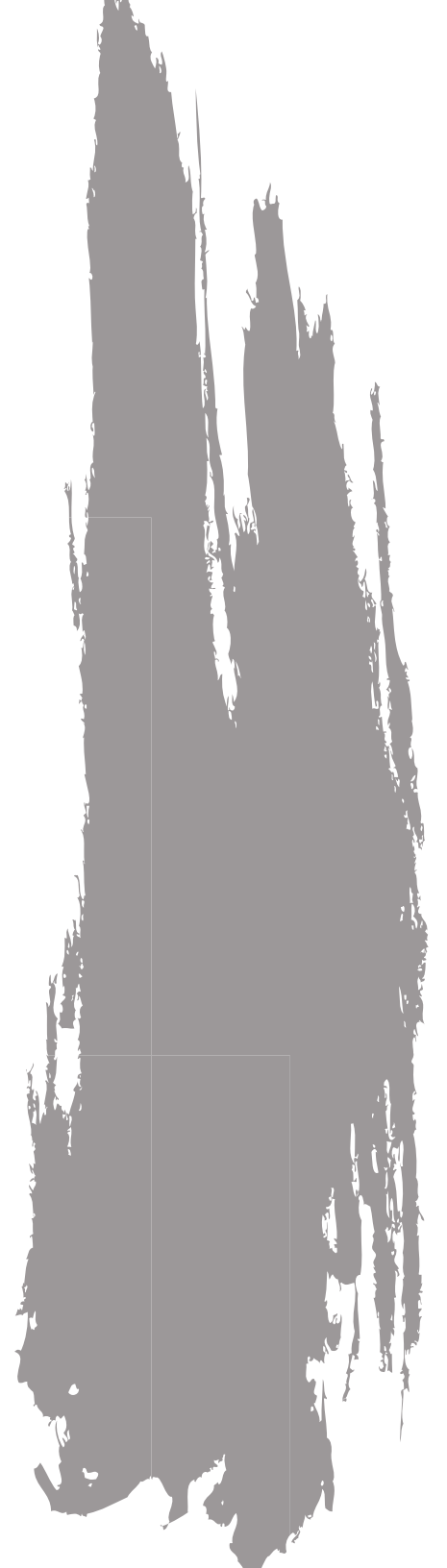
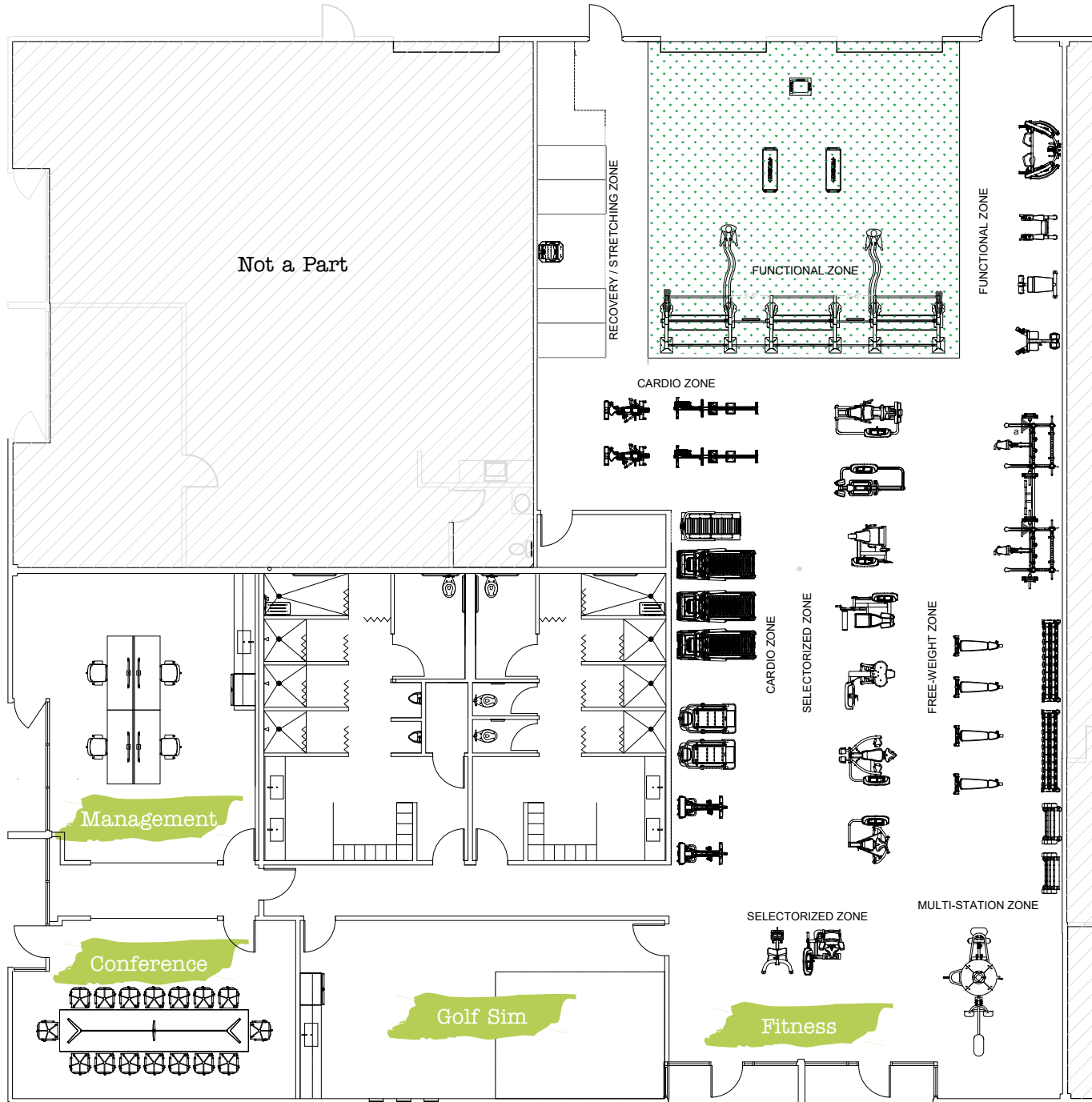
1. 8250 Vickers St - G - 880 SF - available now
2. 8340 Vickers St - A - 615 SF - available now

Flex

1. 8145 Ronson Rd - B,C,J,K,I - 4,701 SF - available now
2. 8205 Ronson Rd - C,D - 5,050 SF - available now
3. 8245 Ronson Rd - G - 1,620 SF - available now

NNNs = Approximately \$0.43 PSF

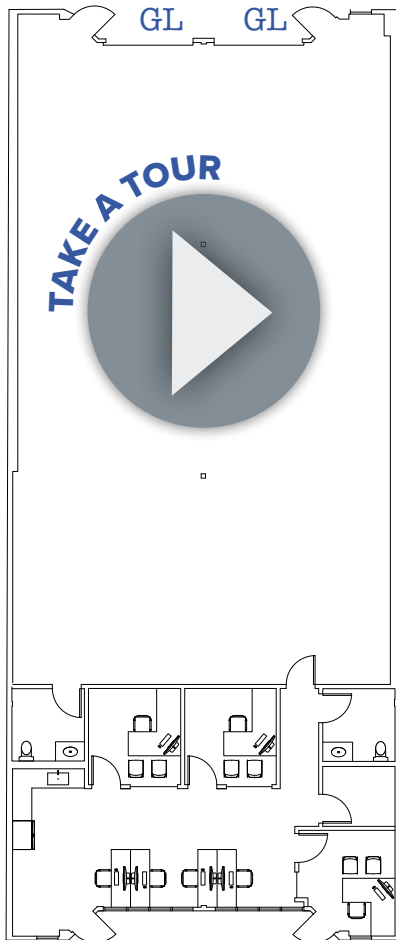
Amenities



8148 Ronson Rd Suite F,G,S,T

- Spec Plan Now Complete
- Available Now
- 3,920 SF

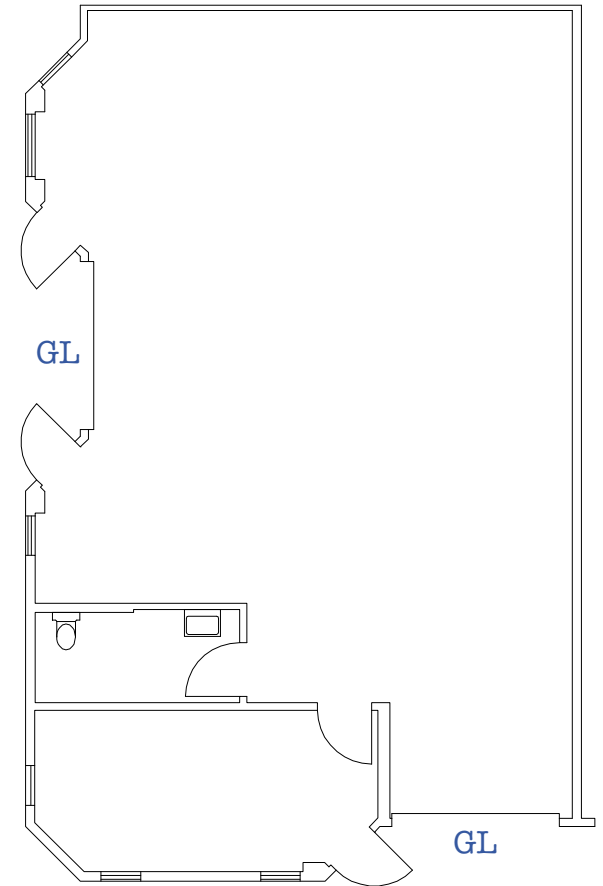
Spec Plan



8148 Ronson Rd Suite N/O

- Available December 2024
 - 1,520 SF

As-Is Plan



Industrial

8170 Ronson Rd Suite K,L,M

- Available January 2025
- 2,500 SF

(Floor plan pending)

8170 Ronson Rd Suite J

- Available January 2025
- 980 SF

(Floor plan pending)



Industrial

8170 Ronson Rd

Suite H

- Available January 2025
- 980 SF

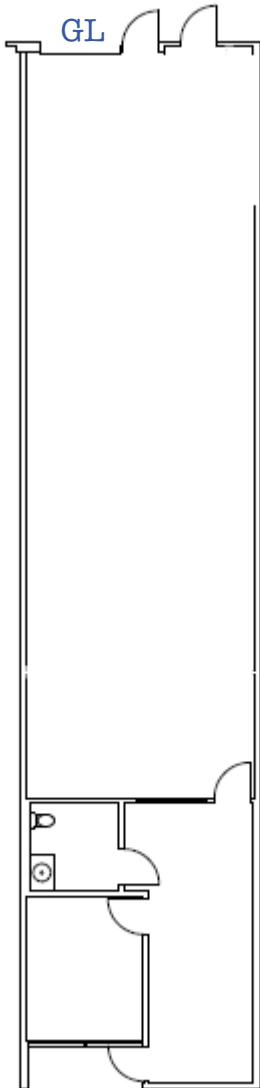
(Floor plan pending)

Industrial

8195 Ronson Rd Suite D

- Available September 2024
- 1,620 SF

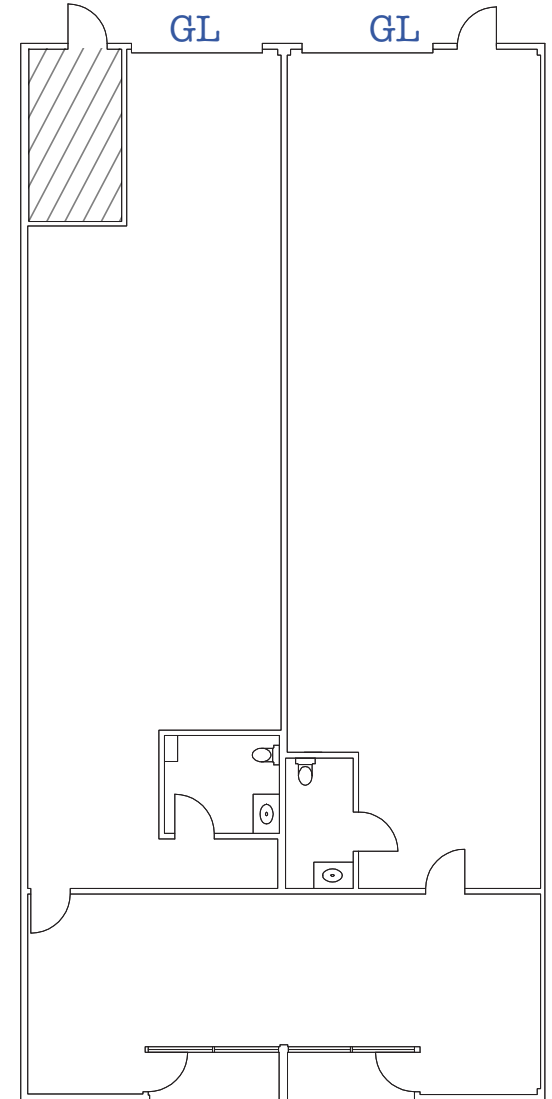
As-Is Plan



8380 Vickers St Suite H,I

- Available Now
- 3,132 SF

As-Is Plan

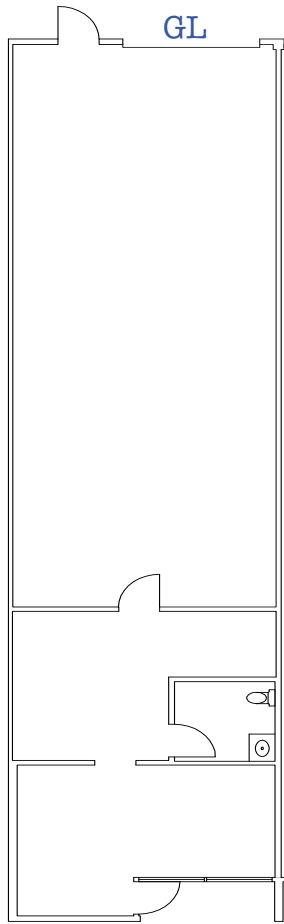


Industrial

8195 Ronson Rd Suite G

- Available September 2024
- 1,620 SF

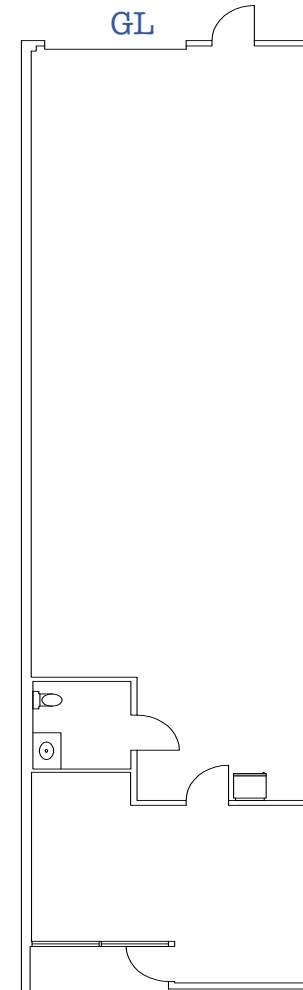
As-Is Plan



8340 Vickers St Suite G

- Available Now
- 1,620 SF

As-Is Plan

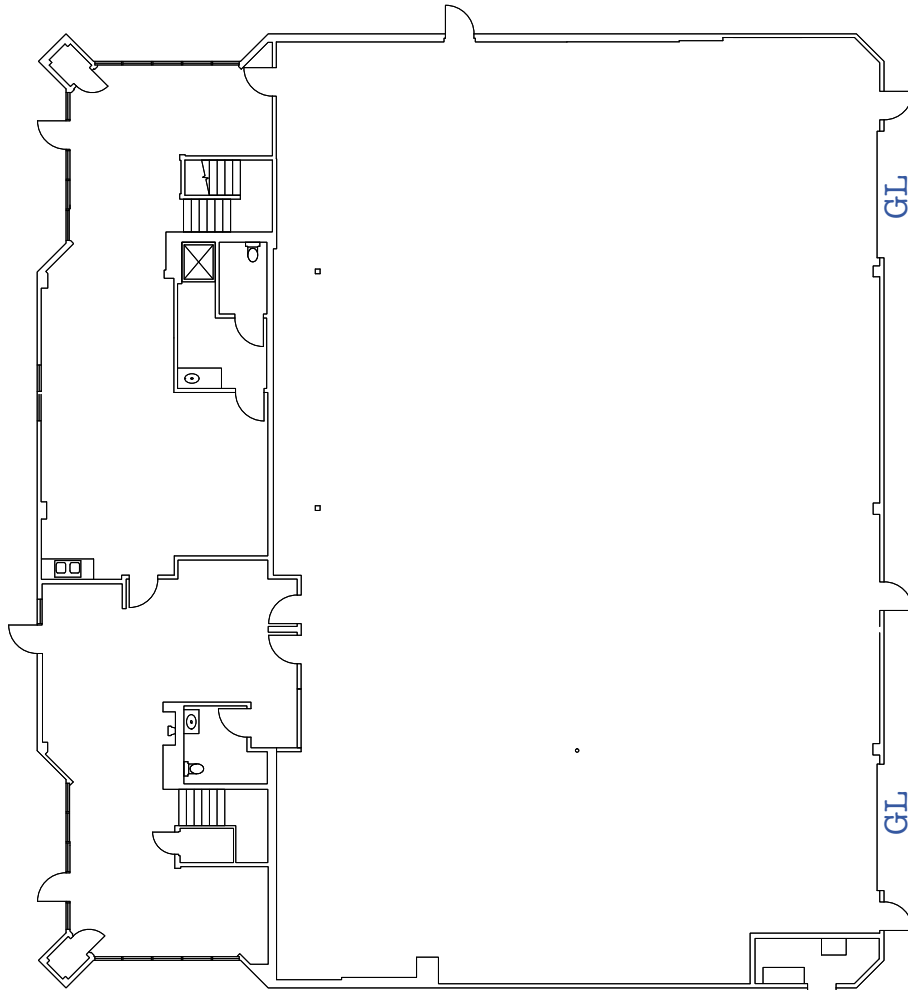


Industrial

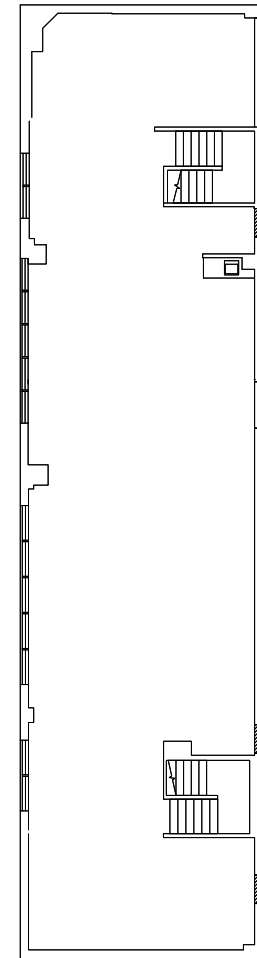
4819 Ronson Ct

- Available Now
- 10,400 SF

Spec Plan



1st Floor



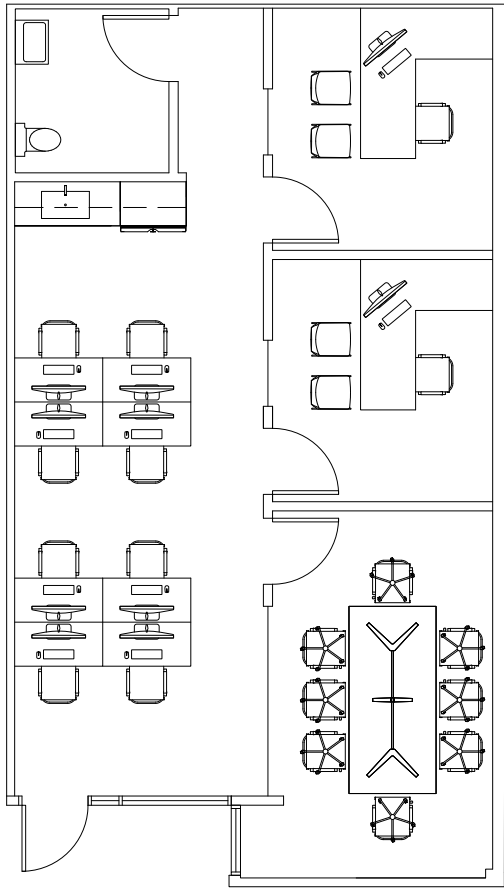
Mezzanine

Industrial

8250 Vickers St Suite G

- Available Now
- 880 SF

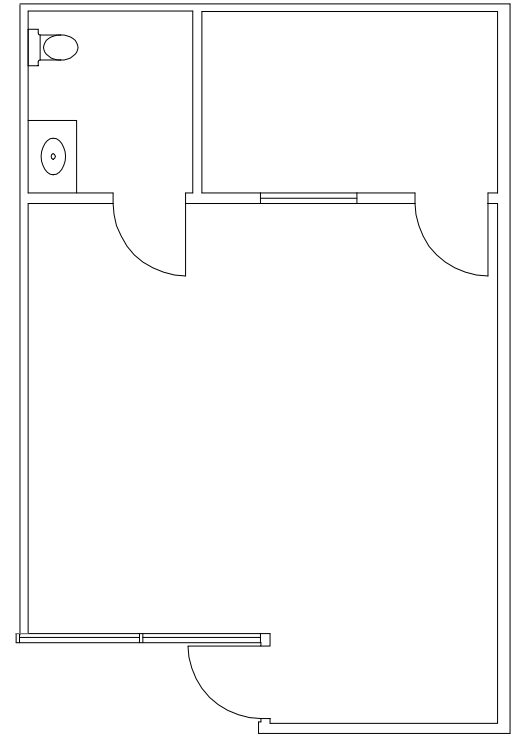
Hypothetical Plan



8340 Vickers St Suite A

- Available Now
- 615 SF

As-Is Plan

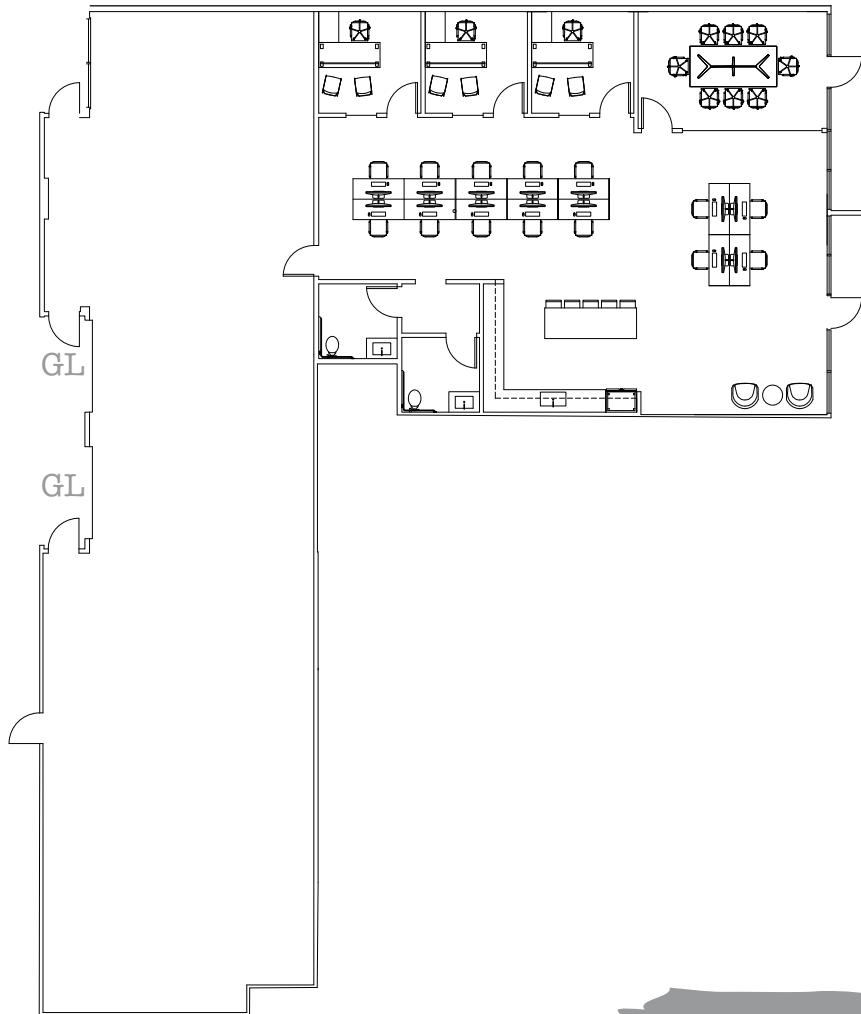


Office

8145 Ronson Rd Suite B,C,J,K,I

- Available Now
- 4,701 SF

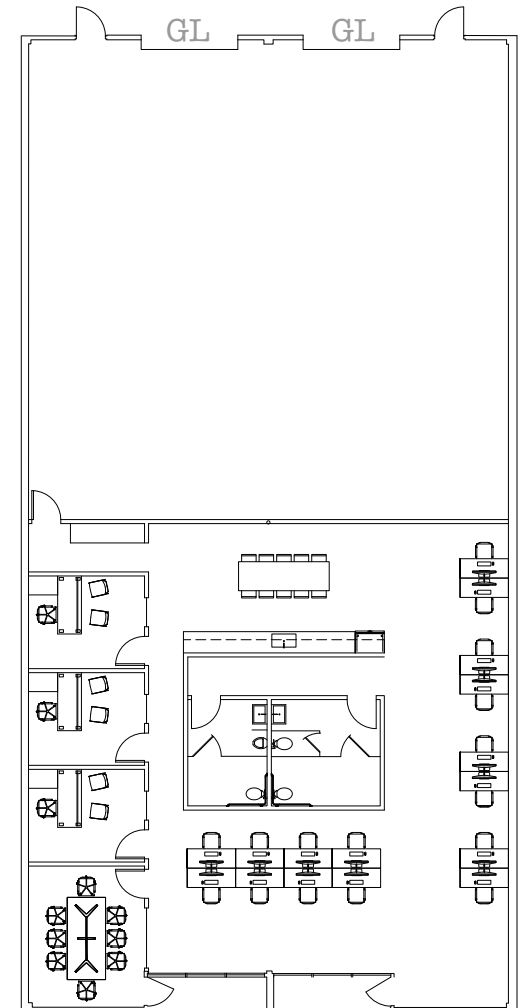
Spec Plan



8205 Ronson Rd Suite C,D

- Available Now
- 5,050 SF

Spec Plan



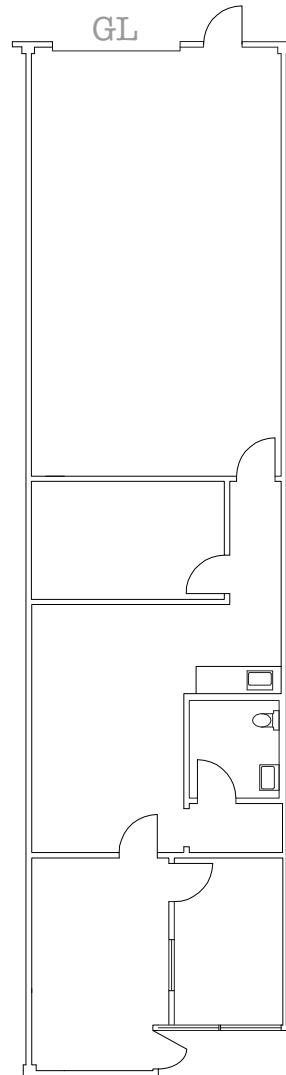
Flex

8245 Ronson Rd

Suite G

- Available Now
- 1,620 SF

As-Is Plan



Flex



RYAN DOWNING, SIOR
+1 858 546 5416
ryan.downing@cushwake.com
CA Lic 01955032

BRANT ABERG, SIOR
+1 858 546 5464
brant.aberg@cushwake.com
CA Lic 01773573

MICHAEL CASSOLATO
+1 858 546 5434
michael.cassolato@cushwake.com
CA Lic 01893847

©Cushman and Wakefield. All rights reserved. The information contained in this communication is strictly confidential. This information has been obtained from sources believed to be reliable but has not been verified. No warranty or representation, express or implied, is made as to the condition of the property (or properties) referenced herein or as to the accuracy or completeness of the information contained herein, and same is submitted subject to errors, omissions, change of price, rental or other conditions, withdrawal without notice, and any special listing conditions imposed by the property owner. Any projections, opinions or estimates are subject to uncertainty and do not signify current or future property performance.

CRUZAN

