

Crosstown Place

THE NEW UPGRADE TO
DON MILLS & EGLINTON



1176 EGLINTON AVENUE EAST, TORONTO
32,400 sf Full Floor Sublease Available



WELCOME TO CROSTOWN PLACE™

A New Master-Planned Community With 60 Acres of Space to Live, Work, Play & Thrive.

This exclusive sublet opportunity offers up to 32,400 sf of under construction, premium office space at Crosstown Place, part of the highly anticipated, master-planned, Crosstown Community. Located at Don Mills and Eglinton, 1176 Eglinton Avenue East, is a connected, innovative and sustainable workplace solution. Crosstown Place offers direct access to the brand-new Eglinton Crosstown LRT, a new 5-acre community park with numerous walking/bike trails and many area amenities.

Opportunity Details

Sublet Availability

~~9th Floor - Leased~~
~~8th Floor - Leased~~
7th Floor: 32,400 sf - Available

Available

December 2023
(subject final construction)

Term

To November 30th, 2034

Net Rent

Negotiable - speak to listing agents

Additional Rent

Not yet assessed

Inducement Allowance

Available

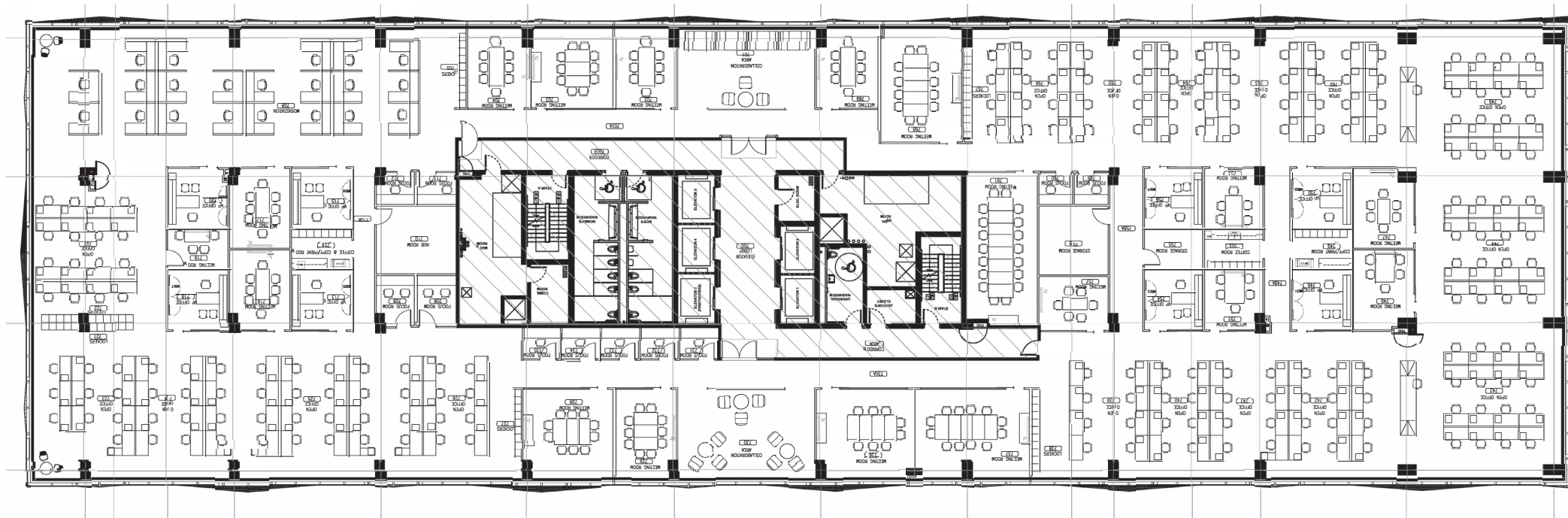
Direct Landlord Availability

Additional 147,000 sf

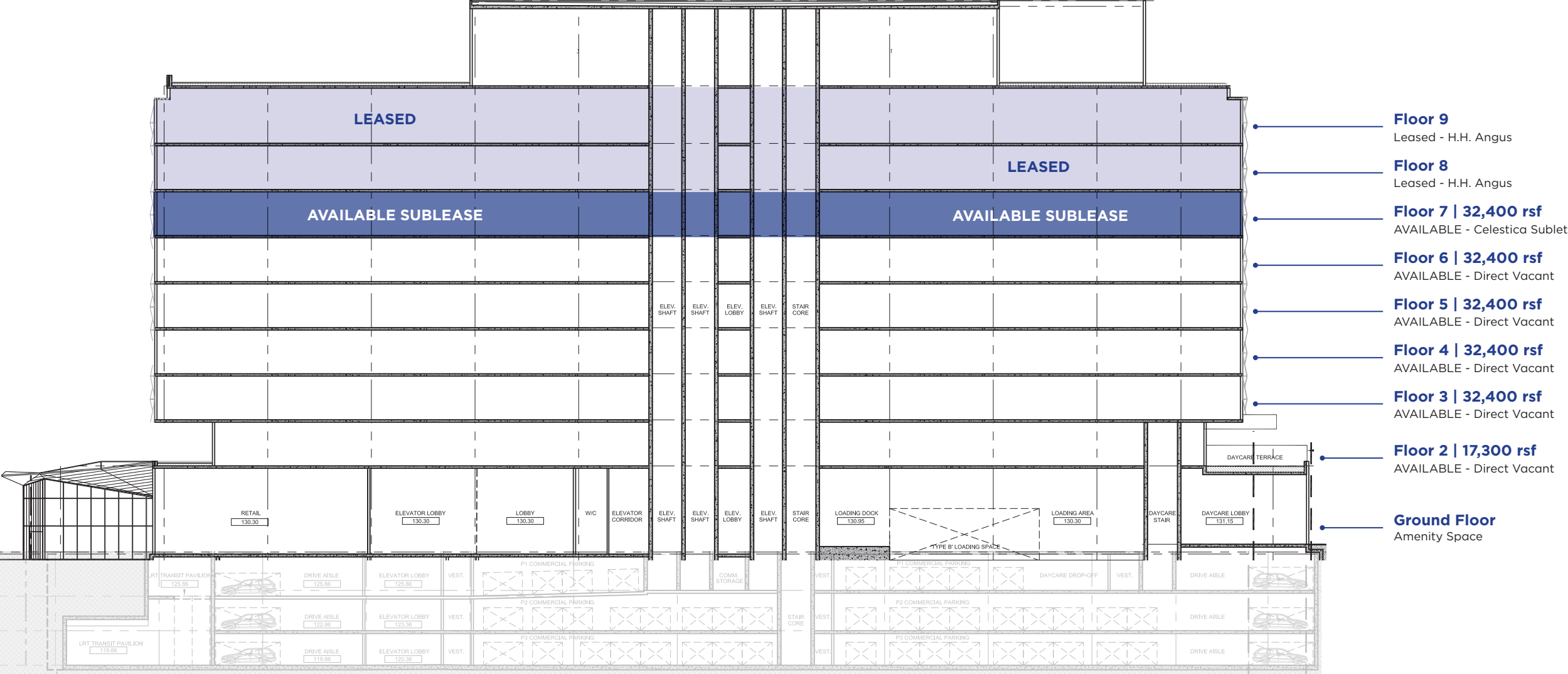




Sample Floor Plan



The Building



- Floor 9**
Leased - H.H. Angus
- Floor 8**
Leased - H.H. Angus
- Floor 7 | 32,400 rsf**
AVAILABLE - Celestica Sublet
- Floor 6 | 32,400 rsf**
AVAILABLE - Direct Vacant
- Floor 5 | 32,400 rsf**
AVAILABLE - Direct Vacant
- Floor 4 | 32,400 rsf**
AVAILABLE - Direct Vacant
- Floor 3 | 32,400 rsf**
AVAILABLE - Direct Vacant
- Floor 2 | 17,300 rsf**
AVAILABLE - Direct Vacant
- Ground Floor**
Amenity Space

Connected Location

Situated in the heart of the new Crosstown Community at Don Mills & Eglinton, Crosstown Place is located directly on the new Eglinton Crosstown LRT transit line, providing direct access to all areas of the GTA via transit. For drivers, Crosstown Place is directly off the Don Valley Parkway and is in close proximity to Highway 401.



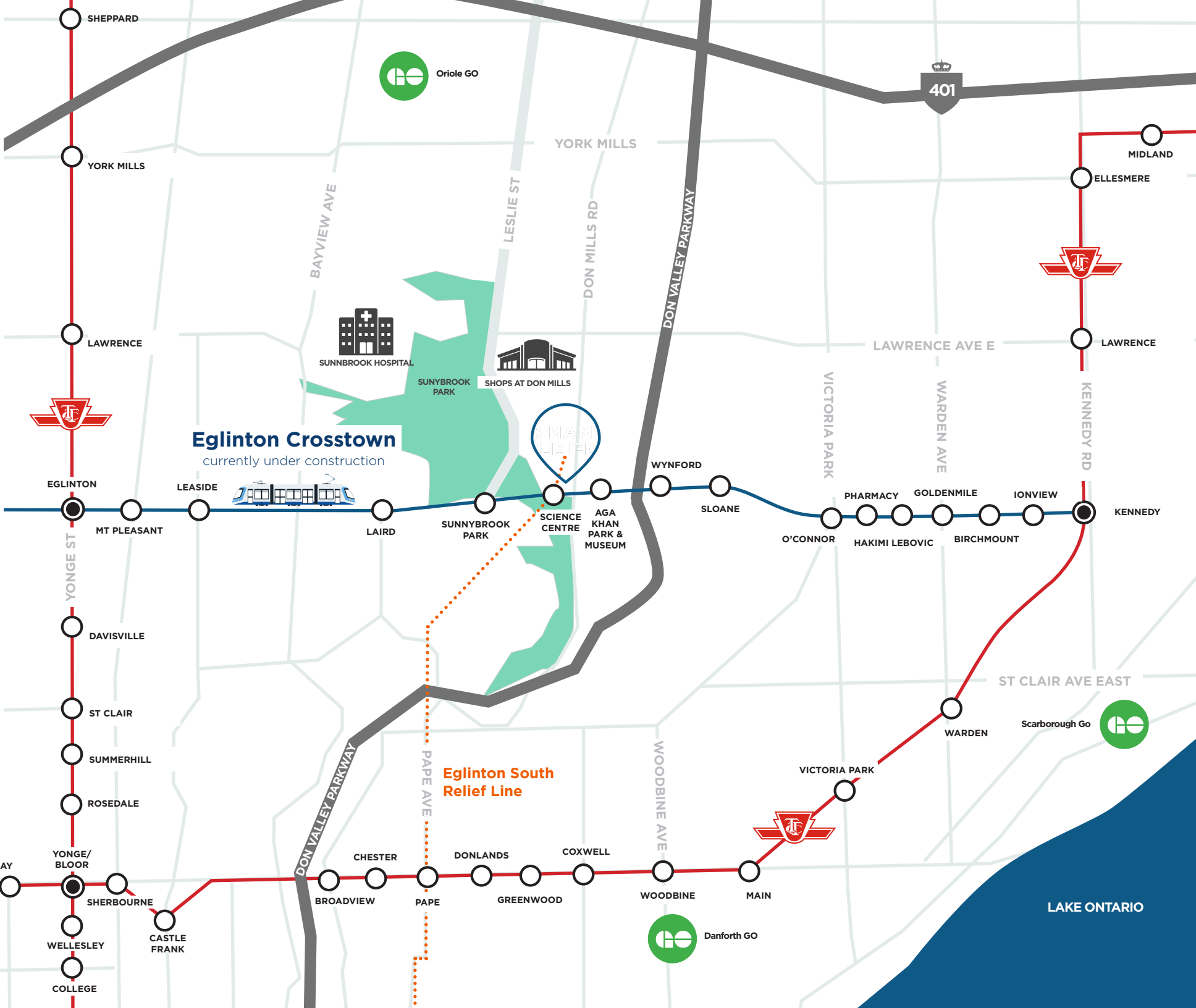
Car

- to the DVP** 1 minute
- To CF Shops @ Don Mills** 4 minutes
- To the 401** 9 minutes
- To Harbourfront** 15 minutes



Transit

- to Yonge & Eglinton** 5 stops
- To Bay & Bloor** 10 stops
- To Yonge & Dundas** 13 stops
- To Union** 16 stops



Contact



Cushman & Wakefield ULC
1100-3100 Steeles Avenue East
Markham, Ontario L3R 8T3
www.cushmanwakefield.ca

GLEN MOORE*
Senior Vice President
416 756 5432
glen.moore@cushwake.com

KEN KARULAS*
Vice President
416 756 5406
ken.karulas@cushwake.com

©2023 Cushman & Wakefield ULC, Brokerage. All rights reserved. The information contained in this communication is strictly confidential. This information has been obtained from sources believed to be reliable but has not been verified. NO WARRANTY OR REPRESENTATION, EXPRESS OR IMPLIED, IS MADE AS TO THE CONDITION OF THE PROPERTY (OR PROPERTIES) REFERENCED HEREIN OR AS TO THE ACCURACY OR COMPLETENESS OF THE INFORMATION CONTAINED HEREIN, AND SAME IS SUBMITTED SUBJECT TO ERRORS, OMISSIONS, CHANGE OF PRICE, RENTAL OR OTHER CONDITIONS, WITHDRAWAL WITHOUT NOTICE, AND TO ANY SPECIAL LISTING CONDITIONS IMPOSED BY THE PROPERTY OWNER(S). ANY PROJECTIONS, OPINIONS OR ESTIMATES ARE SUBJECT TO UNCERTAINTY AND DO NOT SIGNIFY CURRENT OR FUTURE PROPERTY PERFORMANCE. *Sales representative