

MERIDIAN PARK NORTH

BUILDING 4 : 14089 Meridian Parkway, Riverside, CA 92518



MERIDIAN
WHERE COMMERCE MEETS THE WORLD

±80,074 SF INDUSTRIAL BUILDING FOR SALE OR LEASE



Phil Lombardo
phil.lombardo@cushwake.com
+1 909 942 4678
CA License 00892477

Chuck Belden, SIOR
chuck.belden@cushwake.com
+1 909 942 4640
CA License 00844840

Andrew Starnes
andrew.starnes@cushwake.com
+1 909 942 4667
CA License 01799801

Joseph L. McKay
jmckay@lee-assoc.com
+1 909 373 2914
CA License 00894360

Michael Fine
mfine@lee-assoc.com
+1 909 373 2917
CA License 01735854



A QUALITY PROJECT BY:



PROPERTY FEATURES



±80,074 SF Industrial Building



32' Clear Height



±3,020 SF High End Office Space



15 Dock High Doors (9'w x 10'h)
(4 Doors w/ Dock Packages)



1 Grade Level Ramp (12'w x 15'h)



141' Secured Yard Area w/ 12' Concrete
Screen Wall



100 Car Parking Spaces



ESFR Sprinkler System



1,200 Amp, 277/480v Electrical



25 FC LED Lighting



A QUALITY PROJECT BY:

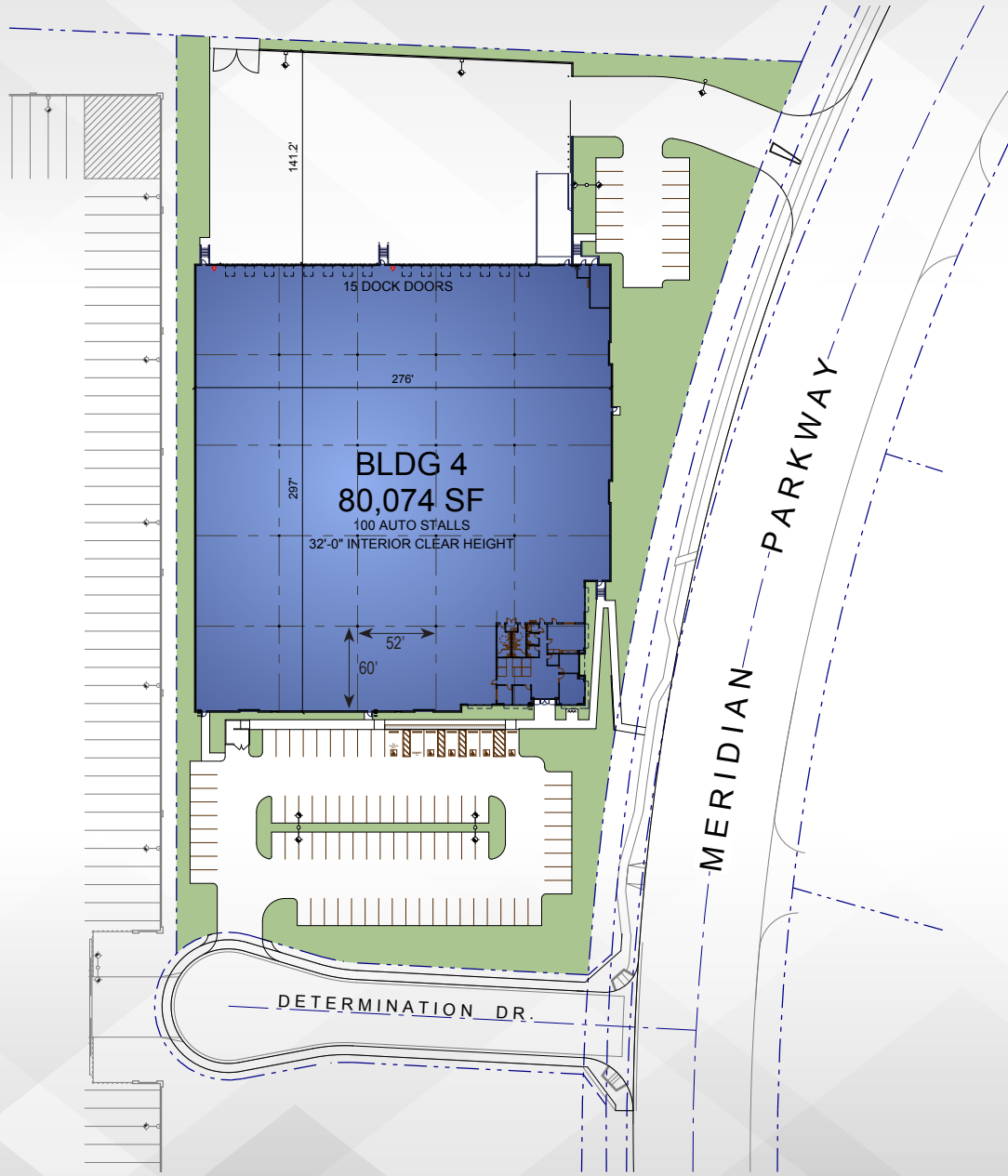


CROW HOLDINGS
CAPITAL



14089 Meridian Parkway, Riverside, CA 92518

FOR SALE OR LEASE : ±80,074 SF

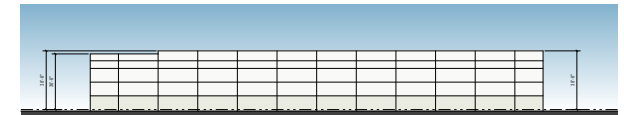


MERIDIAN
WHERE COMMERCE MEETS THE WORLD

TYP



NORTH ELEVATION



WEST ELEVATION



SOUTH ELEVATION



EAST ELEVATION

A QUALITY PROJECT BY:

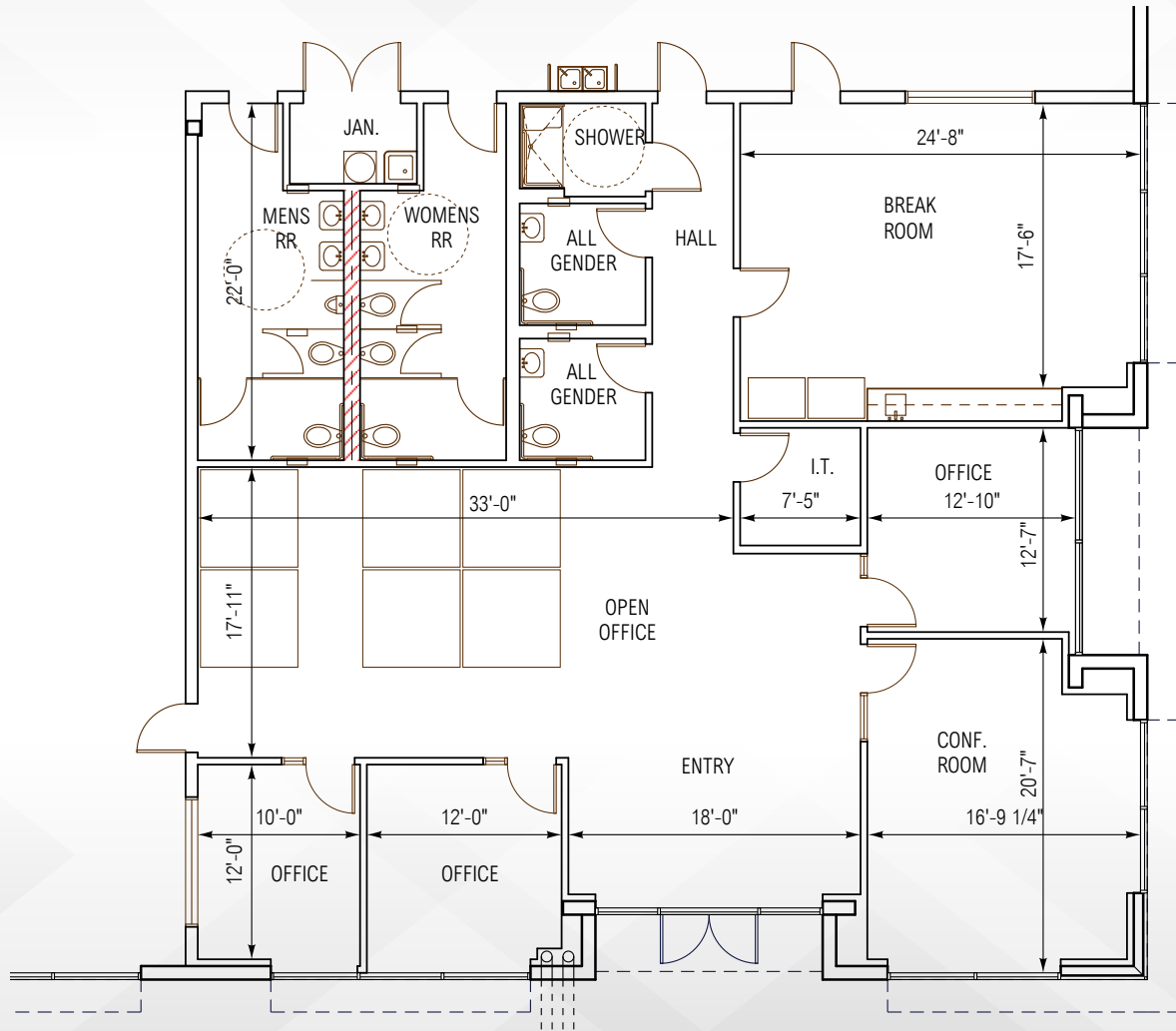


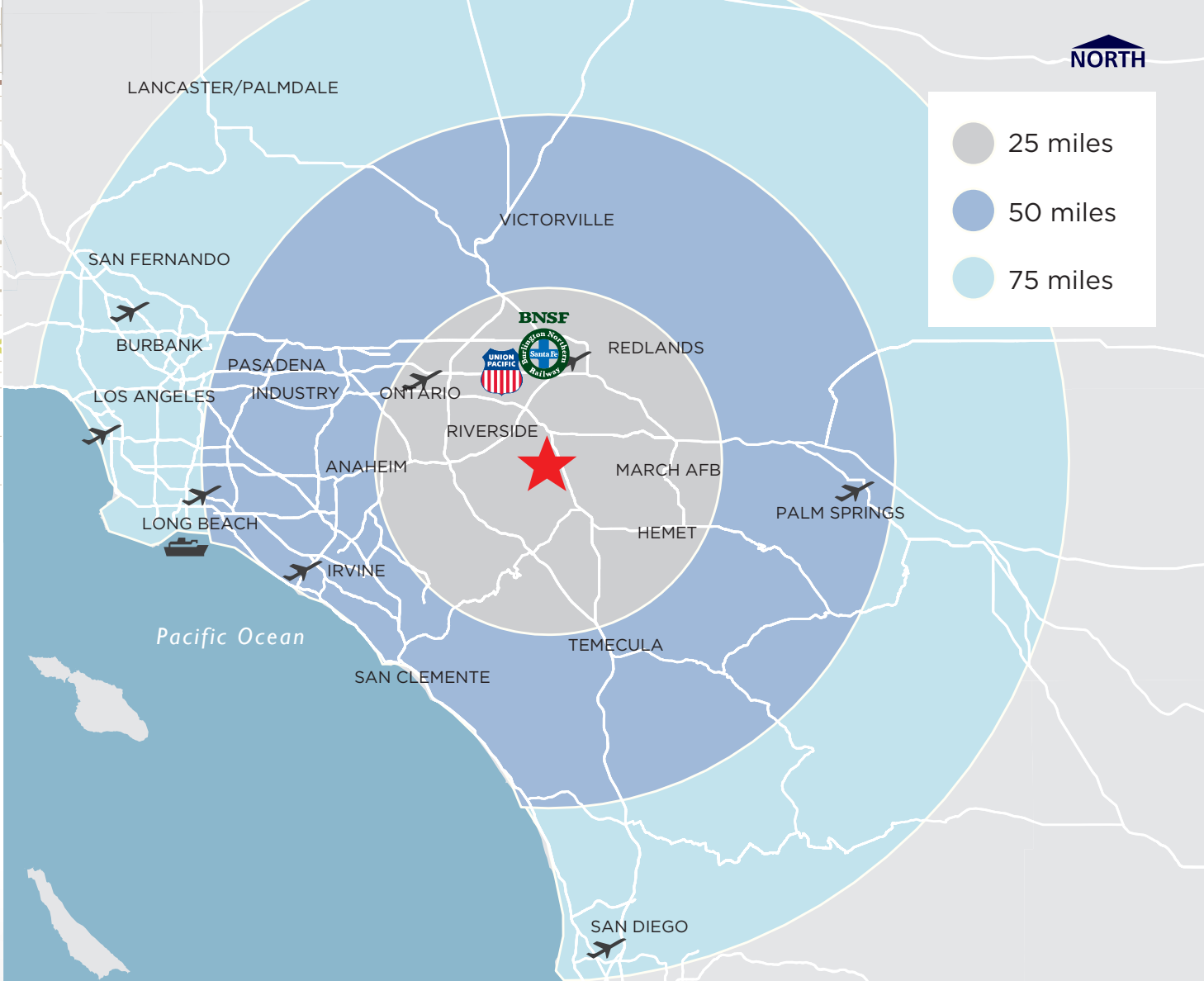
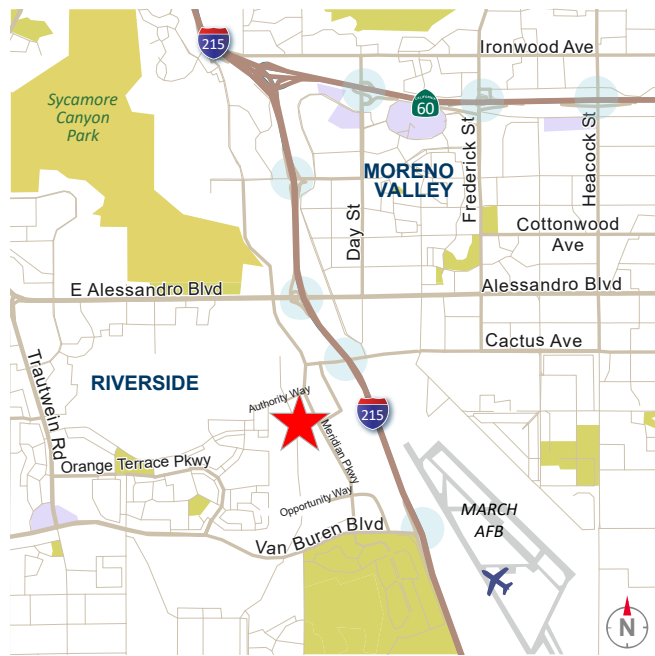
CROW HOLDINGS
CAPITAL





3,020 SF OFFICE AREA





NORTH

- 25 miles
- 50 miles
- 75 miles

 **26 MILES**
to Ontario International Airport

 **74 MILES**
to the Ports of Los Angeles & Long Beach

 **77 MILES**
to Los Angeles International Airport (LAX)

 **89 MILES**
to San Diego

Phil Lombardo
phil.lombardo@cushwake.com
+1 909 942 4678
CA License 00892477

Chuck Belden, SIOR
chuck.belden@cushwake.com
+1 909 942 4640
CA License 00844840

Andrew Starnes
andrew.starnes@cushwake.com
+1 909 942 4667
CA License 01799801

Joseph L. McKay
jmckay@lee-assoc.com
+1 909 373 2914
CA License 00894360

Michael Fine
mfine@lee-assoc.com
+1 909 373 2917
CA License 01735854



MERIDIAN
WHERE COMMERCE MEETS THE WORLD

A QUALITY PROJECT BY:

