

FOR SUBLEASE

# CITYCENTRE FOUR

840 W Sam Houston Parkway N, Houston, TX 77024

5,222 RSF



## SPACE DETAILS

### Premises

5,222 RSF; Suite 420

### Term

Through 12/31/2026

### “Net” Rate

Negotiable

### OPEX

\$18.78/RSF

### Parking

3.00/1,000 RSF

\$40.00 UNR; \$85.00 RES

Prestigious location in heart of Memorial at  
I-10 & Beltway 8

•••••

500,000 SF of upscale retail & restaurants

•••••

Hotel Sorella

•••••

LifeTime Fitness

•••••

LEED Silver

•••••

Dedicated office tenant parking spaces

•••••

24/7 security

## BUILDING NOTES



**CUSHMAN &  
WAKEFIELD**

cushmanwakefield.com

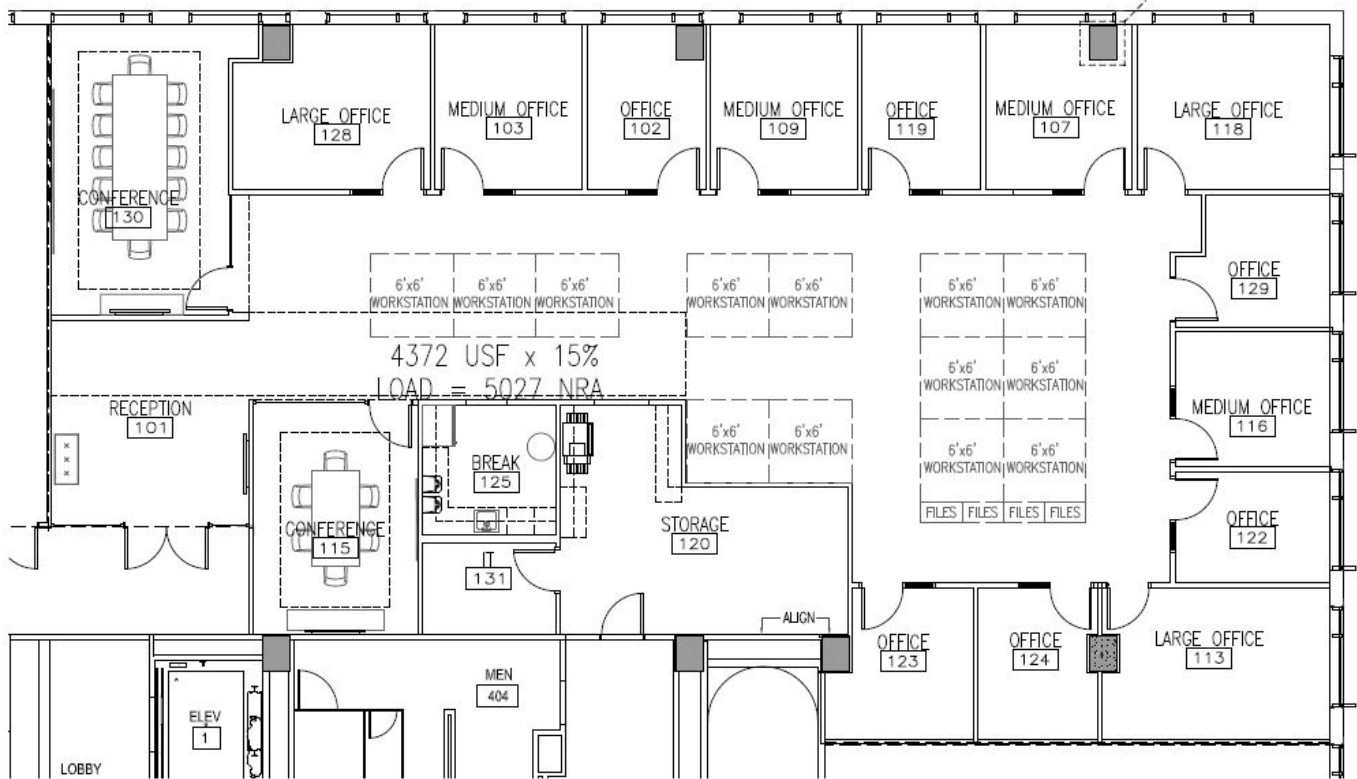
# CITYCENTRE FOUR

840 W Sam Houston Parkway N, Houston, TX 77024

5,222 RSF

FOR SUBLEASE

## FLOOR PLAN



### JOE RAMBIN

Director  
+1 713 963 2820  
joe.rambin@cushwake.com

1330 Post Oak Blvd, Suite 2700  
Houston, Texas  
Main +1 713 877 1700  
cushmanwakefield.com

