



CUSHMAN &  
WAKEFIELD

**FOR LEASE**

**550 EAST SOUTH TEMPLE  
SALT LAKE CITY, UT**

**NEVER-BEFORE OFFERED  
SOUTH TEMPLE OFFICE SPACE**

**FULL EAST BUILDING UP TO  
±63,790 RSF AVAILABLE**

**ABLE TO DEMISE TO FULL FLOORS;  
RANGING FROM 11,576 RSF TO 21,452 RSF**

**\$21.00/RSF, Full-Service**

**Contact**

**Mike Richmond**

Executive Managing Director  
+1 801 303 5434  
mike.richmond@cushwake.com

**Dana Baird, ccim**

Executive Managing Director  
+1 801 303 5526  
dana.baird@cushwake.com

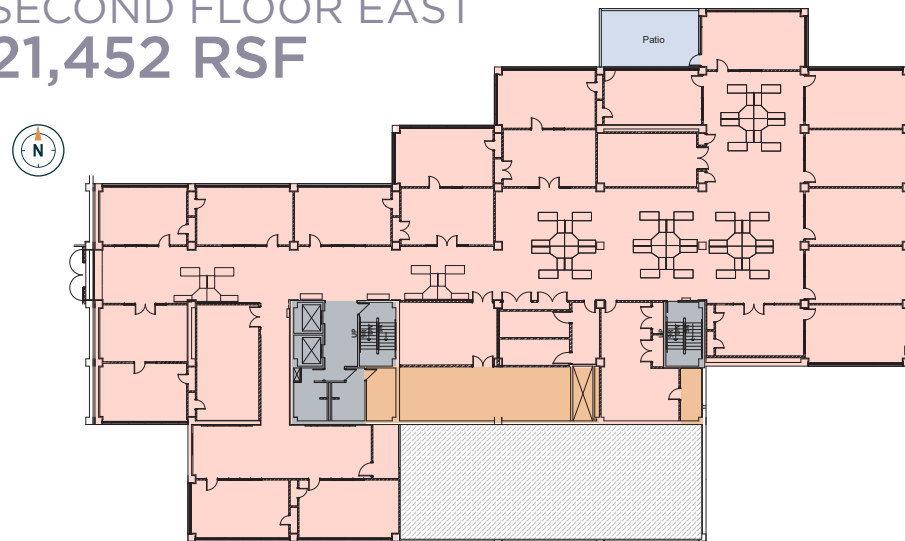


**PRESTIGIOUS SOUTH TEMPLE LOCATION  
NEARLY 65,000 RSF AVAILABLE**

**FIRST FLOOR EAST  
16,577 RSF**



**SECOND FLOOR EAST  
21,452 RSF**



**Key Features:**

- Outdoor patios and balconies
- Covered/structured parking
- Shared fitness facility with lockers and showers
- Shared conference rooms and training spaces
- On-site dining/cafeteria
- Secured building access with camera monitoring
- Furniture available



LANDSCAPED GROUNDS



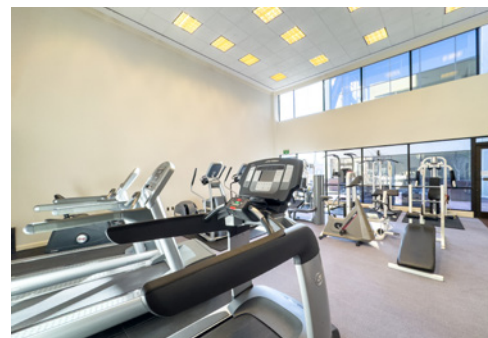
SHARED CONFERENCE ROOM



PRIVATE OFFICE



SHARED BUILDING LOBBY



FITNESS CENTER



LOCKER ROOMS WITH SHOWERS

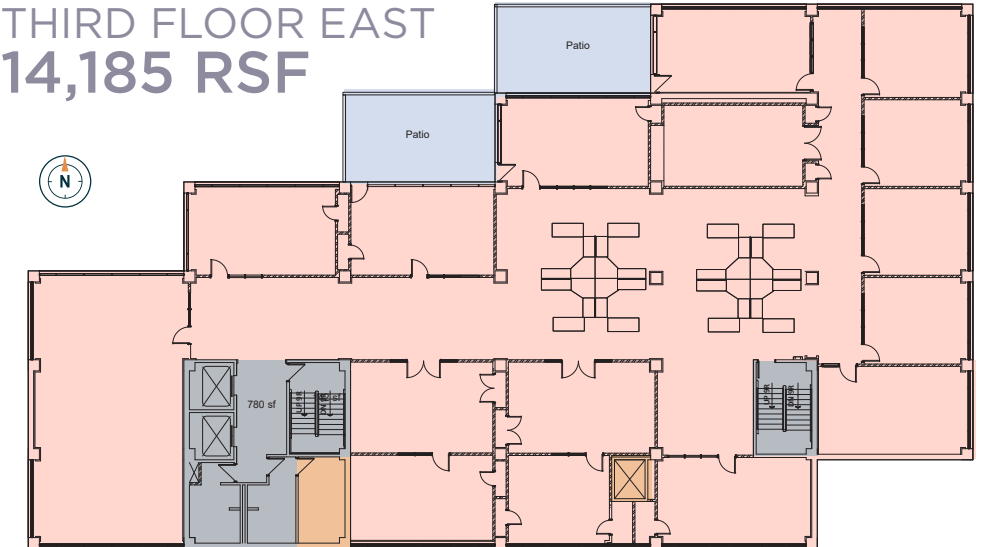


UNDERGROUND PARKING

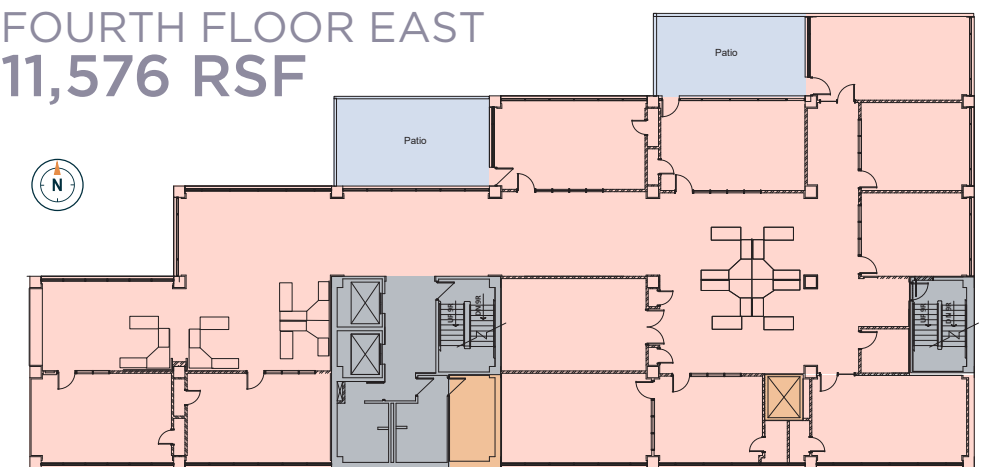


ON-SITE DINING/CAFETERIA

**THIRD FLOOR EAST  
14,185 RSF**



**FOURTH FLOOR EAST  
11,576 RSF**



**LEGEND**

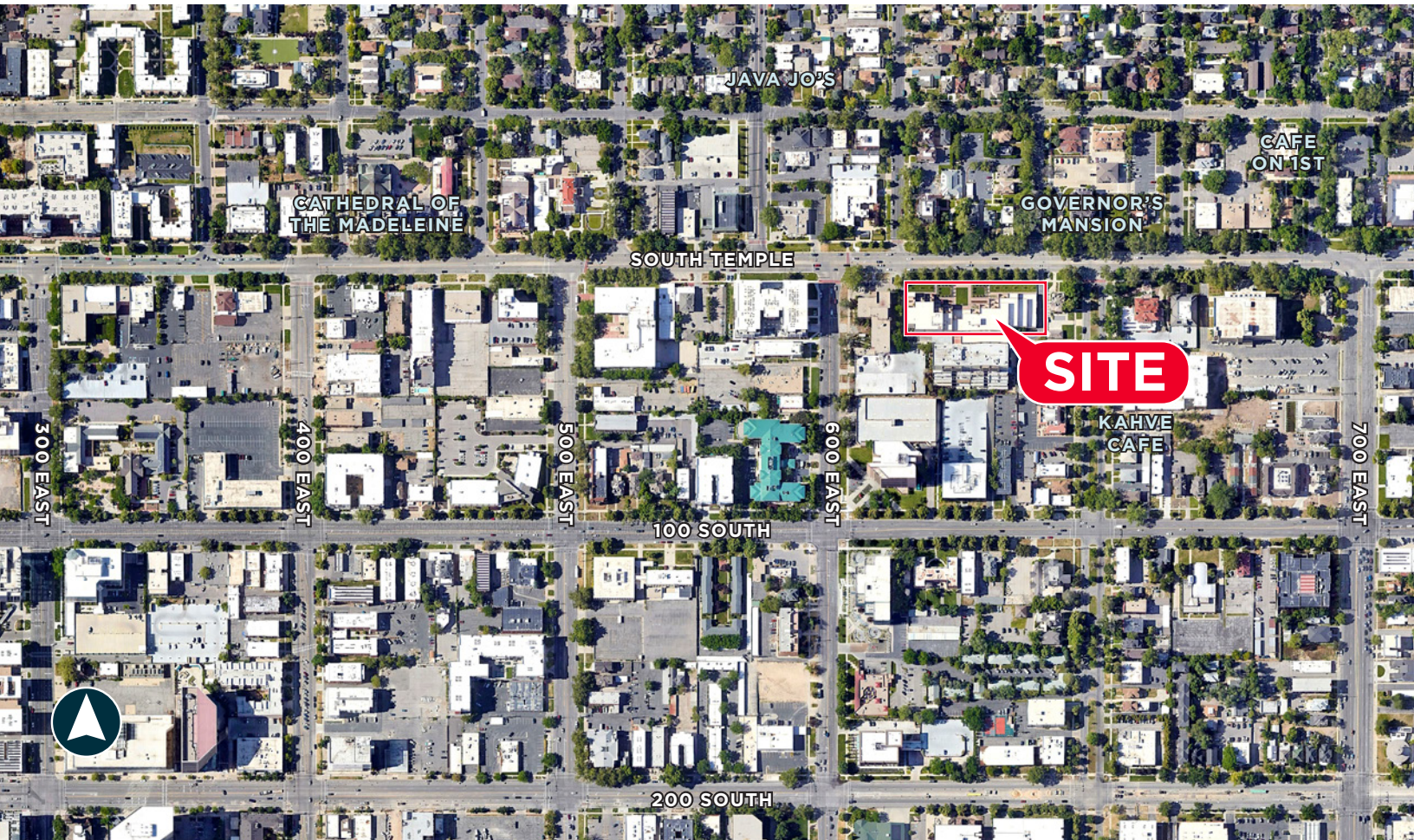
- Shared Tenant Amenities
- Leaseable Tenant Space
- Electrical/Mechanical Space
- Building Services
- Tenant Balconies

**CONTACT**

**Mike Richmond**  
Executive Managing Director  
+1 801 303 5434  
mike.richmond@cushwake.com

**Dana Baird, ccim**  
Executive Managing Director  
+1 801 303 5526  
dana.baird@cushwake.com

**FOR LEASE**  
550 EAST SOUTH TEMPLE  
SALT LAKE CITY, UT



## Contact

**Mike Richmond**  
Executive Managing Director  
+1 801 303 5434  
mike.richmond@cushwake.com

**Dana Baird, ccim**  
Executive Managing Director  
+1 801 303 5526  
dana.baird@cushwake.com

170 South Main Street  
Suite 1600  
Salt Lake City, UT 84101  
+1 801 322 2000  
[cushmanwakefield.com](http://cushmanwakefield.com)

Cushman & Wakefield Copyright 2019. No warranty or representation, express or implied, is made to the accuracy or completeness of the information contained herein, and same is submitted subject to errors, omissions, change of price, rental or other conditions, withdrawal without notice, and to any special listing conditions imposed by the property owner(s). As applicable, we make no representation as to the condition of the property (or properties) in question.  
(path: G:\UT\SL1\Shared\Apps\Gigas\1 - Projects\Richmond, Mike\1 - Flyers\550EastSouthTemple)