

1655
SOUTHGATE
DALY CITY, CA

NEW CLASS A OFFICE/MEDICAL
±1,569 RSF AVAILABLE
ON 1ST FLOOR (DIVISIBLE)



John Barsocchini
Director
+1 650 401 2111
john.barsocchini@cushwake.com
LIC #00893147

Karen Chin
Director
+1 650 401 2132
karen.chin@cushwake.com
LIC #01036169



PROPERTY HIGHLIGHTS

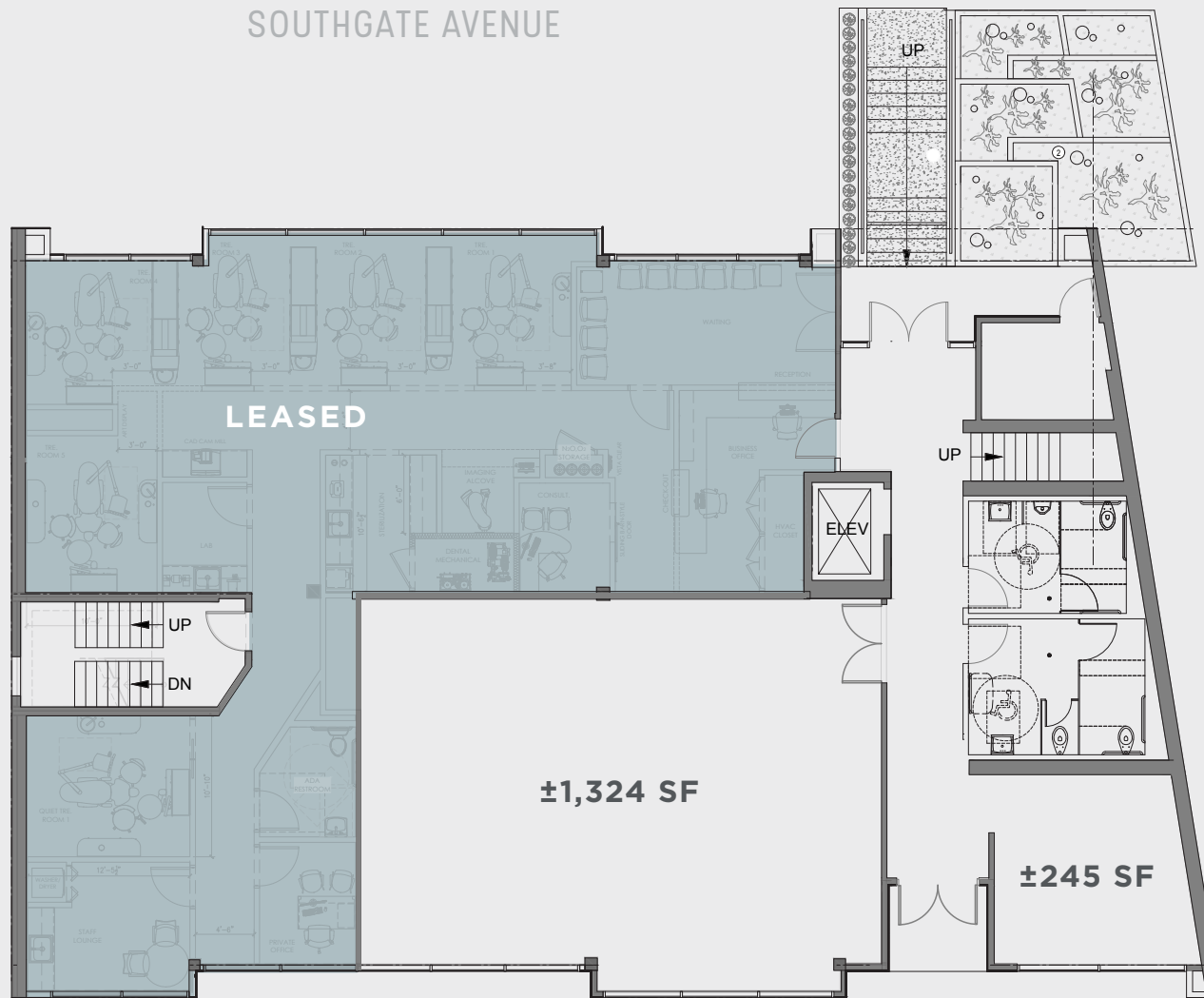
- Across from Serramonte shopping mall
- ±1,569 rentable square feet on 1st floor
- Covered dedicated parking
- Monument signage available
- Easy freeway access
- Close to BART
- 10 minutes to SFO Airport

PENINSULA CENTER
DENTAL IMPLANTS & ORAL SURGERY

John Barsocchini
Director
+1 650 401 2111
john.barsocchini@cushwake.com
LIC #00893147

Karen Chin
Director
+1 650 401 2132
karen.chin@cushwake.com
LIC #01036169

FLOOR PLAN

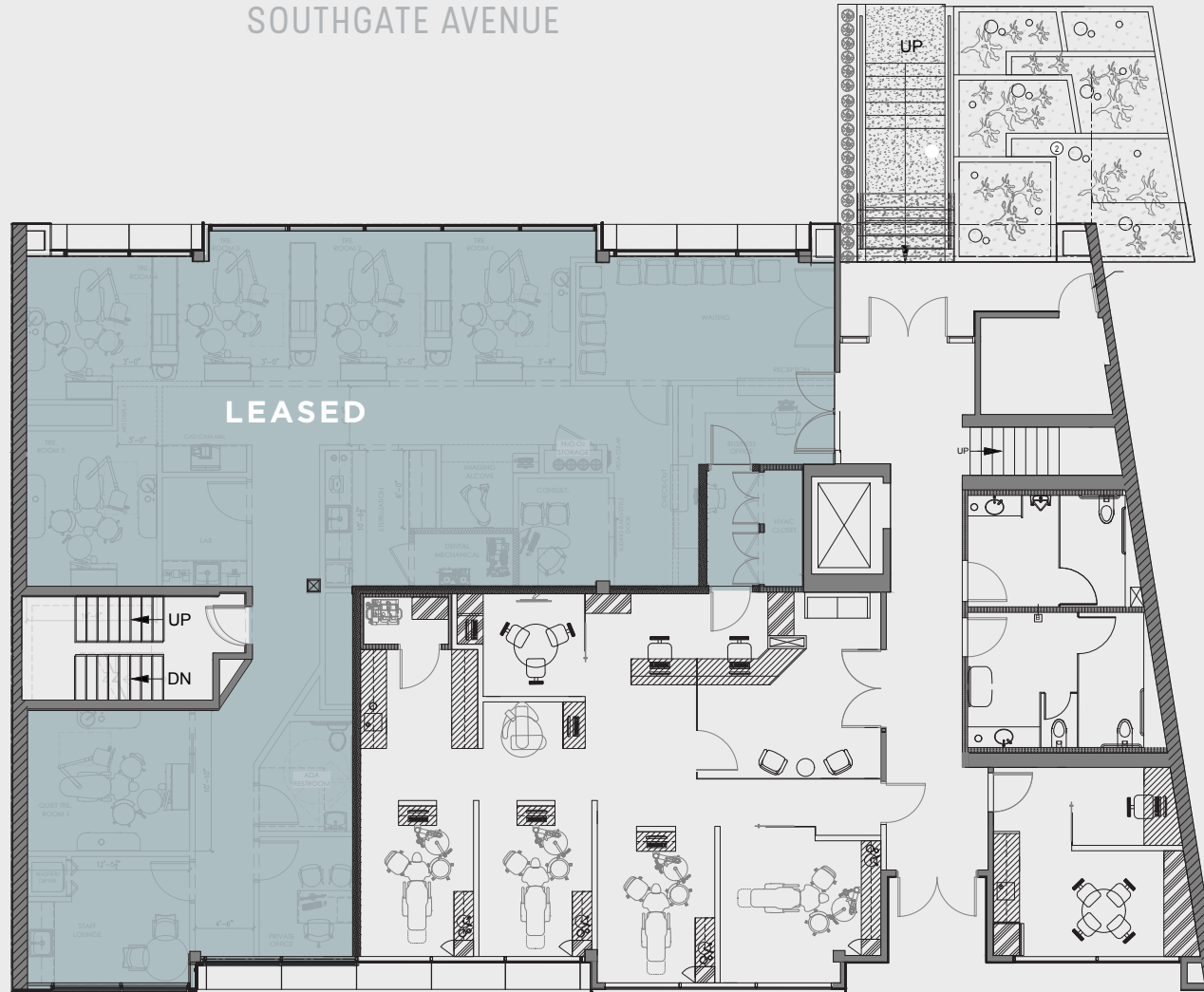


John Barsocchini
Director
+1 650 401 2111
john.barsocchini@cushwake.com
LIC #00893147

Karen Chin
Director
+1 650 401 2132
karen.chin@cushwake.com
LIC #01036169

HYPOTHETICAL FLOOR PLAN

SOUTHGATE AVENUE



John Barsocchini
Director
+1 650 401 2111
john.barsocchini@cushwake.com
LIC #00893147

Karen Chin
Director
+1 650 401 2132
karen.chin@cushwake.com
LIC #01036169

AMENITIES



CVS
pharmacy

Seton
Medical Center



- Old Navy
- Nordstrom Rack
- Ross
- Home Depot
- Pier 1 imports



- Dave & Buster's (New)
- Cineplex (New)
- Buffalo Wild Wings
- Rubio's
- Starbucks
- Footlocker
- H&M
- Victoria's Secret



★ **macy's**

EVERY SEASON STARTS AT
DICK'S
SPORTING GOODS

TARGET

- Target
- Michaels
- BevMo!
- GameStop
- Fresh Choice
- Aaron Brothers
- Starbucks
- Popeyes

CVS
pharmacy

- Habit Burger
- Celia's
- Starbucks
- Koi Palace
- Moonstar
- In-N-Out (New)
- Panera
- Bed Bath & Beyond
- Ross



John Barsocchini
Director
+1 650 401 2111
john.barsocchini@cushwake.com
LIC #00893147

Karen Chin
Director
+1 650 401 2132
karen.chin@cushwake.com
LIC #01036169