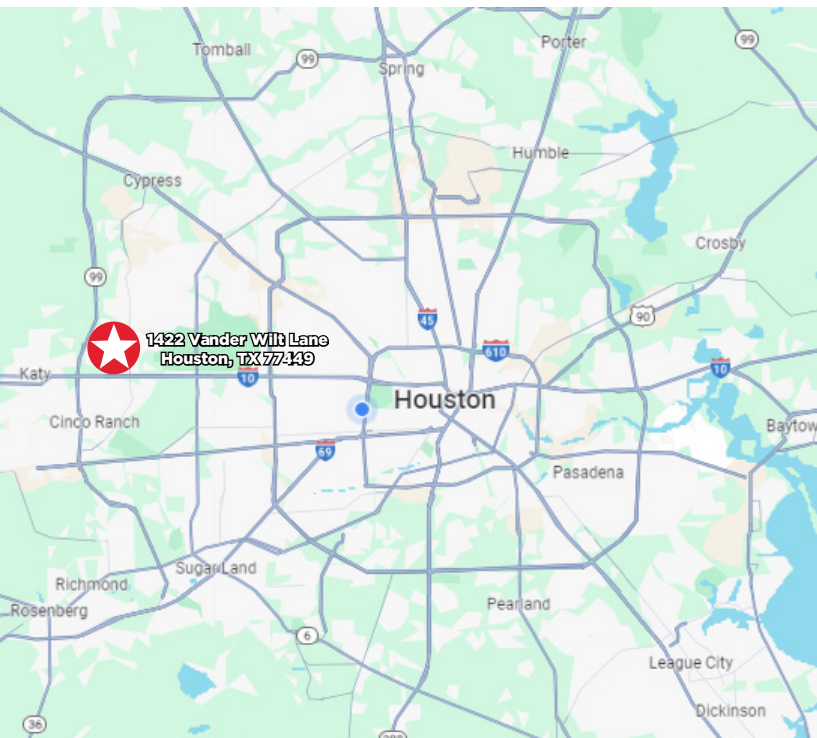




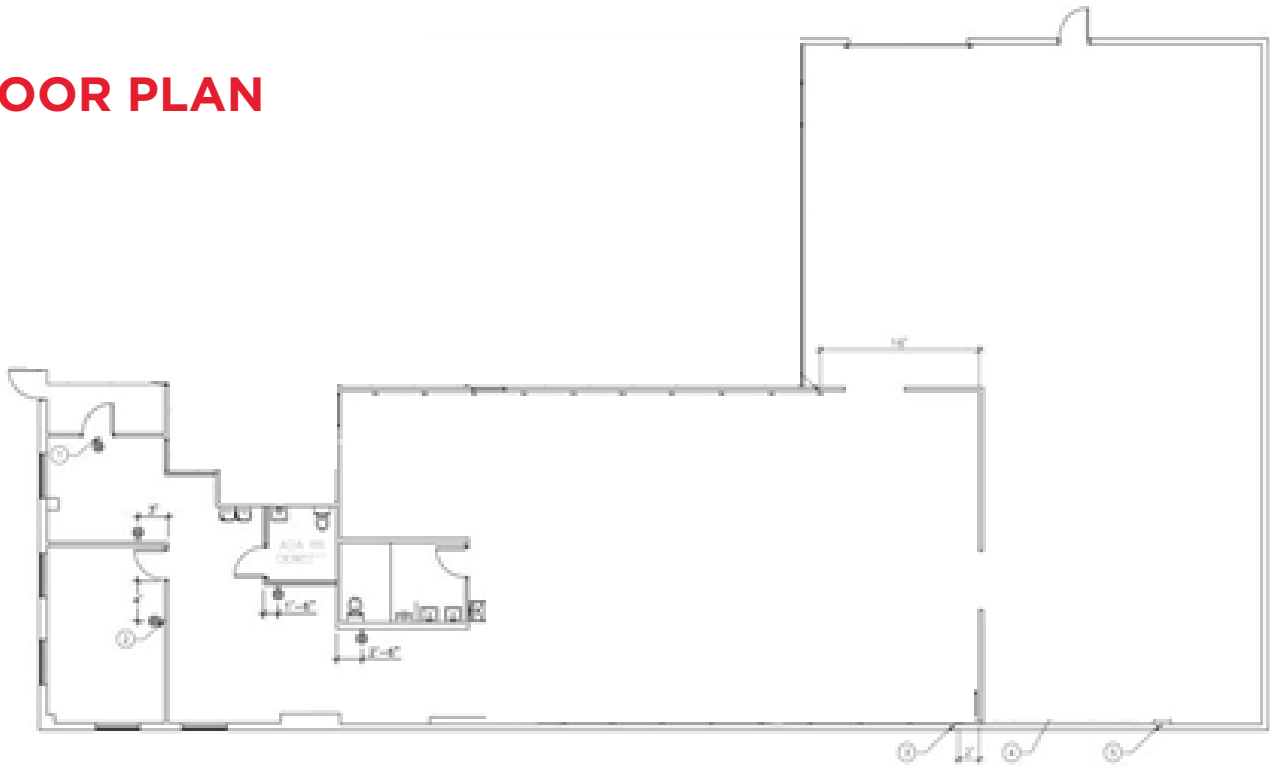
**±5,660 SF AVAILABLE**



## PROPERTY HIGHLIGHTS

- 5,660 SF Available
- ±1,980 SF Warehouse
- ±3,680 SF Office Area
- One (1) grade level overhead door
- 100% HVAC
- 18' Eave Height
- Excellent access to I-10

## FLOOR PLAN



## AERIAL MAP



### For more information, please contact:

**Carter Holmes**  
Senior Associate  
Direct: +1 281 688 9274  
Mobile: +1 713 417 5447  
[carter.holmes@cushwake.com](mailto:carter.holmes@cushwake.com)

**Kelly A. Landwermeyer**  
Managing Director  
Mobile: +1 713 249 4295  
[kelly.landwermeyer@cushwake.com](mailto:kelly.landwermeyer@cushwake.com)

1330 Post Oak Boulevard  
Suite 2700 | Houston, TX 77056  
Main: +1 713 877 1700