



Shell Space Perfect for Life Science, Manufacturing, or Office/Warehouse Uses

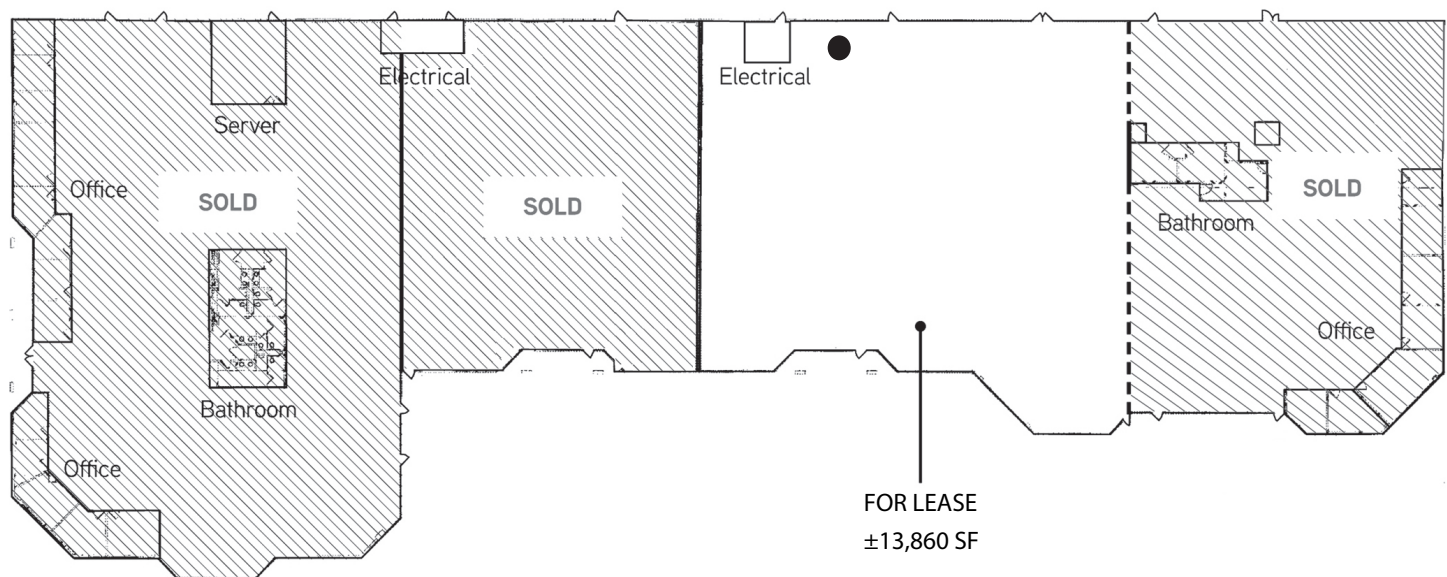
Property Highlights

- ±13,860 SF Available
- Extensive Plumbing with Floor Drains Throughout
- Common Dock-High Loading Alongside Building
- One (1) Grade Level Loading Door
- 4/1,000 Parking
- ±18' Clear Height, Sprinklered, Ample Power
- Extensive Glass Line and Numerous Skylights
- Close Proximity to Hilltop Mall and Many Amenities
- Easy access to I-80, San Rafael Bridge, Berkeley and Emeryville



Jeffrey Leenhouts
Managing Director
510.267.6014
jeffrey.leenhouts@cushwake.com
LIC #01063048

555 12th Street, Suite 100
Oakland, CA 94607
T: 510.465.8000
F: 510.465.1350



[Visit Site Specific COVID-19 Prevention Plan](#)

Jeffrey Leenhouts
Managing Director
510.267.6014
jeffrey.leenhouts@cushwake.com
LIC #01063048

555 12th Street, Suite 100
Oakland, CA 94607
T: 510.465.8000
F: 510.465.1350