



FORD POINT

3.3 MW OF IMMEDIATE POWER AVAILABLE
ADDITIONAL 4,000A UPGRADE UNDERWAY

**A LEGACY OF
INNOVATION.**

AN ARCHITECTURAL ICON AT THE WATER'S EDGE.



Located on the Richmond waterfront, Ford Point is a historic landmark reinvented at the intersection of sustainability and accessibility.

- > HEAVY POWER
 - > 1,800 AMPS @ 480V, 3 PHASE
 - > 1,400 AMPS @ 208V, 3 PHASE
- > SPECTACULAR WATERFRONT VIEWS OF THE BAY AND SAN FRANCISCO
- > SF FERRY STOP RIGHT IN FRONT OF BUILDING
- > HIGH CEILINGS WITH ENORMOUS SKYLIGHTS AND OPERABLE WINDOWS FOR INCREDIBLE NATURAL LIGHT AND FRESH AIR

226,071 SF AVAILABLE FOR INNOVATION.

Ford Point is a community for big ideas—
a place for innovators, creators, collaborators,
leaders, and disruptors.

- > FLEXIBLE ZONING FOR R&D, MANUFACTURING, FLEX OFFICE, AND RETAIL
- > AVAILABILITY ACROSS 1ST AND 2ND FLOORS
- > PRIVATE BOAT DOCK ACCESS AVAILABLE
- > DRIVE-IN LOADING DOCKS AVAILABLE
- > HEAVY POWER

DESIGNED FOR INDUSTRY.



Conceived by renowned industrial architect Albert Kahn, Ford Point is a stunning example of his revolutionary “daylight factory” design, featuring unobstructed interiors and an exposed concrete frame allowing for abundant windows and skylights admitting light and air.



Originally constructed in 1930 as the Ford Motor Company Assembly Building, extensively restored and seismically retrofitted in 2004, Ford Point is a unique mixed-use property with expansive floor plates, high ceilings, and spectacular waterfront views of the bay and San Francisco.

BUILT
1930

TOTAL SF
461,615 SF

ZONING
R&D, manufacturing
and distribution,
advanced manufacturing,
flex office, and retail

**ARCHITECTURAL
FEATURES**
Abundant windows
and skylights

GREEN BUILDING
LED lighting,
rooftop solar panels

PARKING
961-space parking lot
with 17 electric vehicle
charging stations

SECURITY & MAINTENANCE
24-hour manned security,
on-site engineer and
maintenance team

BUILDING ENTRANCES
Individual tenant entrances

ACCESS
24/7

ELEVATORS
3 elevators

LOADING
14 dock high doors and
8 grade-level doors

ELECTRIC CAPACITY
10,500 amps

FLOOR LOADS
200 pounds psf on 1st floor and
150 pounds psf on 2nd floor

CEILING HEIGHT
16' – 18'

PUBLIC TRANSPORTATION
Richmond Ferry Terminal
and BART shuttle

MANAGEMENT
Institutional owner/operator
and national property manager

AMENITIES
Restaurant, event space,
waterfront walk way and
ferry stop

BUILT FOR PRODUCTIVITY.



1930

Renowned architect Albert Kahn designs the Ford Motor Company Assembly Plant, the largest auto plant on the West Coast.

1942

The plant joins WWII production efforts, assembling jeeps, tanks and military combat vehicles, and becomes known as the “Richmond Tank Depot”. After building 49,000 jeeps and 91,000 other military vehicles, the plant reverts back to auto manufacturing

1953

Last Ford is assembled.

1956

The plant closes and remains largely unused for almost 50 years.



1975

University of California sells building to Richmond after using it for book storage.

1988

The building added to the National Register of Historic Places.

1989

The building sustains significant damage after the Loma Prieta earthquake.

2000

The Rosie the Riveter National Historical Park is established to tell stories of home-front efforts at the plant, including women entering the work force for the first time.



2009

The property undergoes a 3-year redevelopment plan that includes a complete seismic upgrade. The fully renovated mixed-use property, renamed Ford Point, houses businesses, a restaurant, light industrial, an entertainment space called the Craneway Pavilion, and the Rosie the Riveter WWII Home Front Visitor Center.

2011

The Ford Point redevelopment wins the American Institute of Architects National Honor Award in 2011.

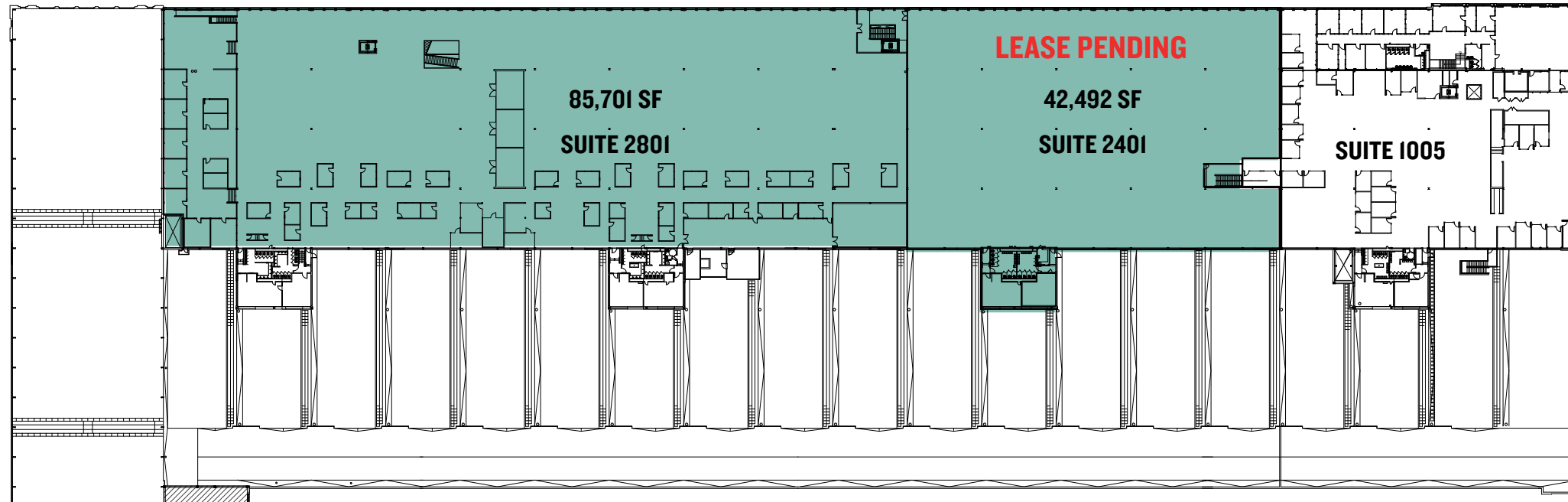
TODAY

Ford Point is home to R&D, manufacturing and distribution, advanced manufacturing, flex office and retail—fulfilling its legacy of innovation.



A HISTORIC ICON RESTORED.

FLOOR 2

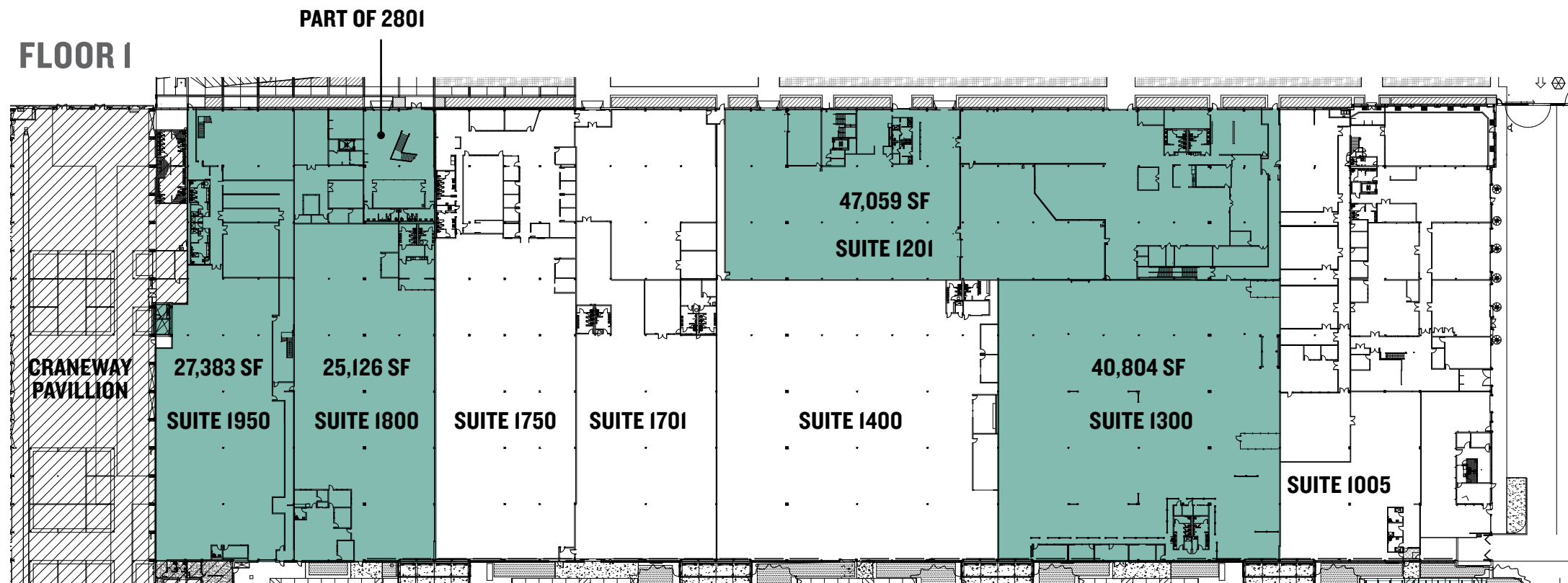


HEAVY POWER.

Suite-by-Suite Power Breakdown

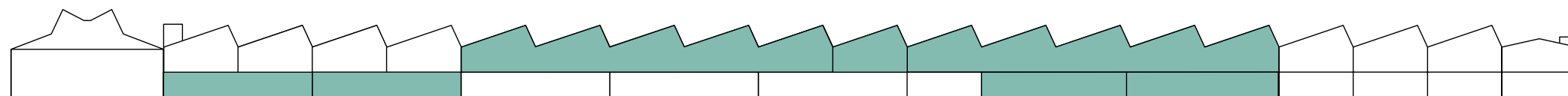
- > 2801 (85,700 SF) - 909 AMPS @ 480V, 3 PHASE + 606 AMPS @ 208V, 3 PHASE
- > 1950 (27,383 SF) - 291 AMPS @ 480V, 3 PHASE + 194 AMPS @ 208V, 3 PHASE
- > 1800 (25,126 SF) - 600 AMPS @ 208V, 3 PHASE
- > 1201 (47,059 SF) - 800 AMPS @ 208V, 3 PHASE
- > 1300 (40,803 SF) - 600 AMPS @ 480V, 3 PHASE

FLOOR 1



Total 226,071 SF available

- > 2-STORY DIVISIBLE SUITES
- > FLEXIBLE ZONING CATERING TO A WIDE RANGE OF USES
- > 16' - 18' CEILING HEIGHTS
- > DOCK HIGH DOORS AND GRADE-LEVEL DOORS
- > EXPANSIVE FLOOR PLATES
- > HEAVY POWER
 - > 1,800 AMPS @ 480V, 3 PHASE
 - > 1,400 AMPS @ 208V, 3 PHASE

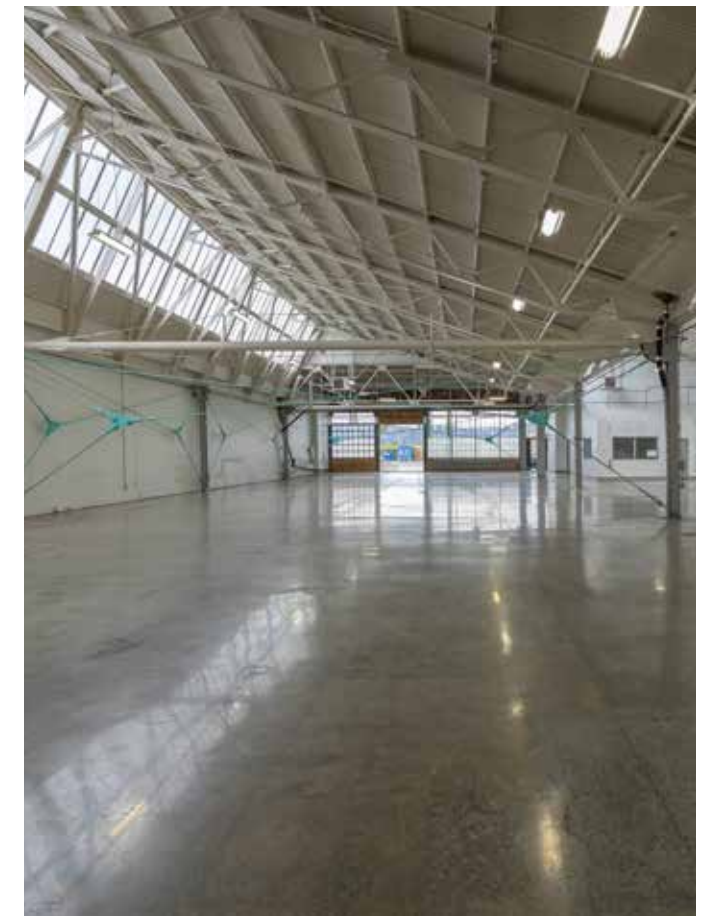
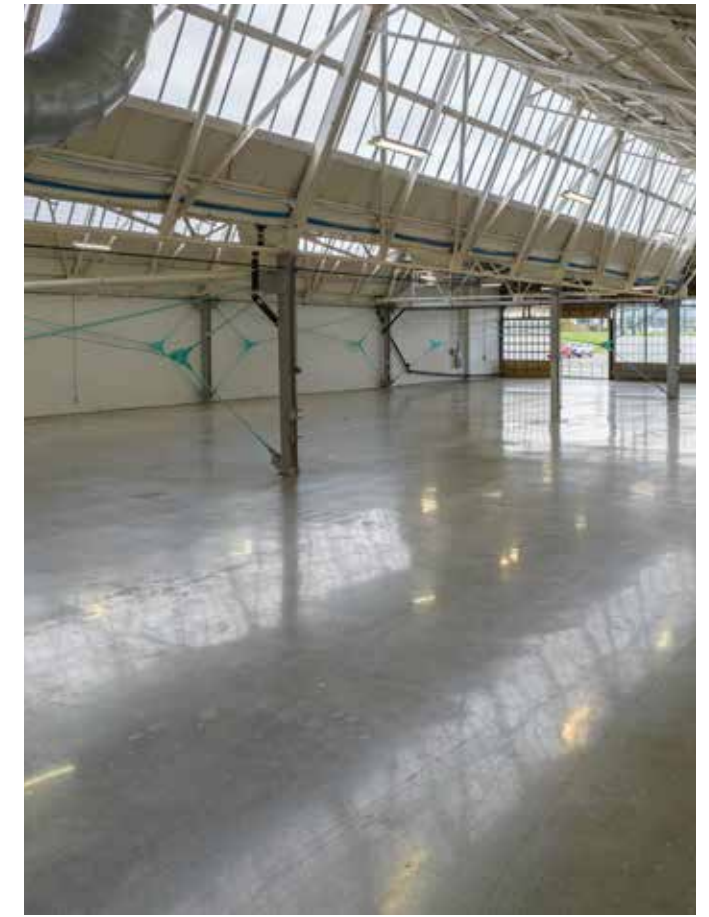


A BIRD'S EYE VIEW.



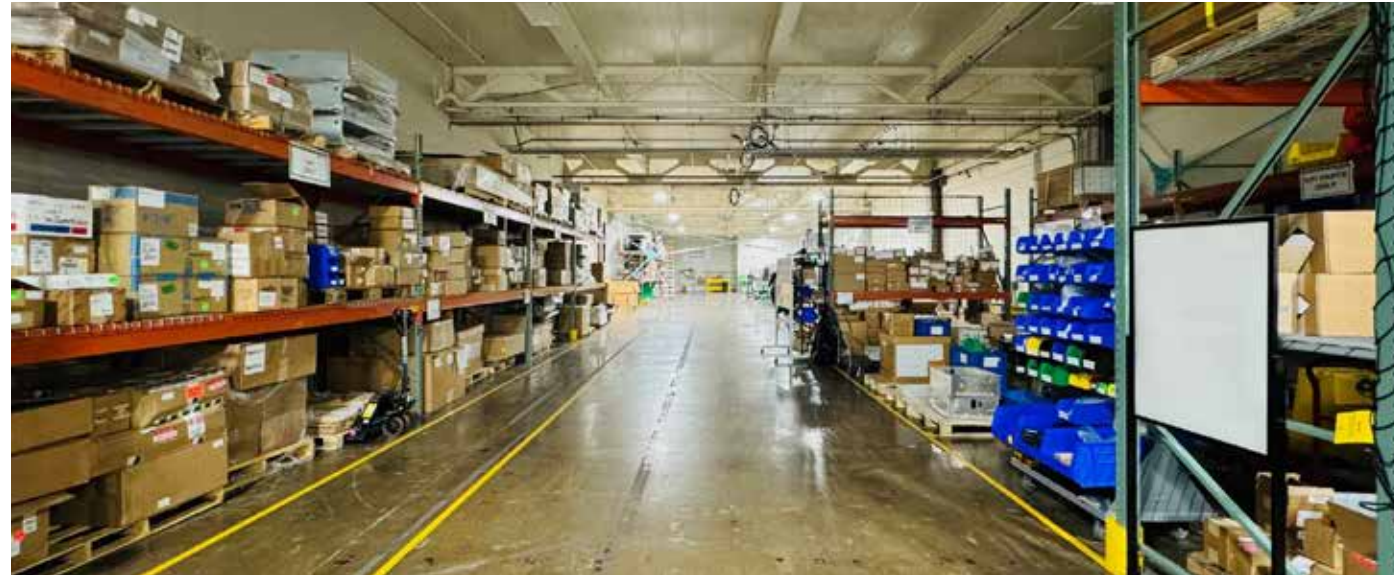
SUITE 1800.

25,126 SF available



SUITE 1201/1300.

87,863 SF available



SUITE 2801.

85,701 SF available



SUITE 1950.

27,383 SF available



SUITE 2401.

42,492 SF available **LEASE PENDING**

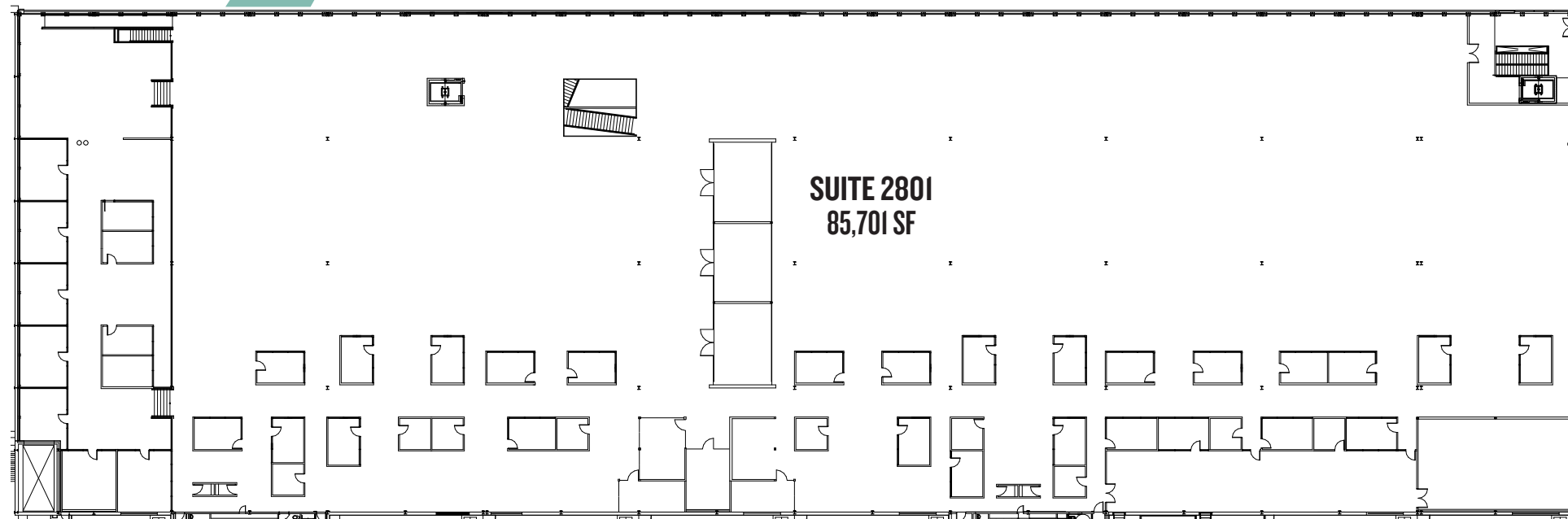
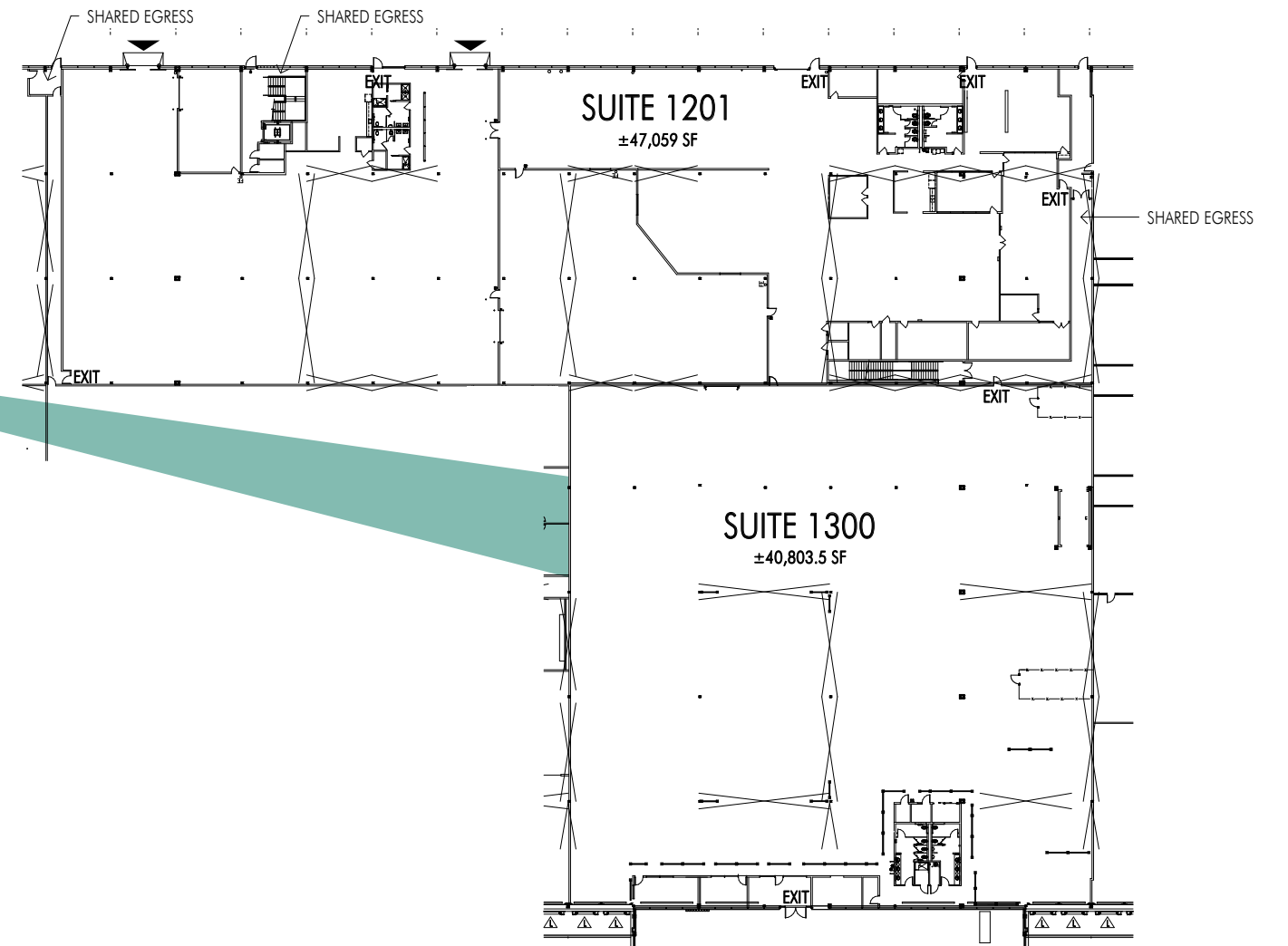
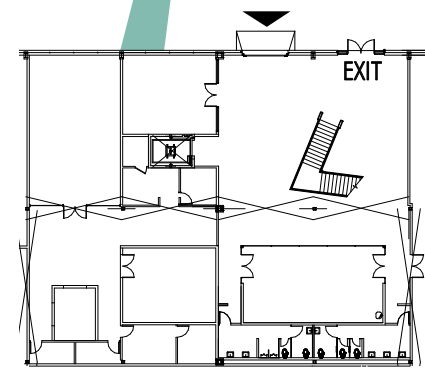
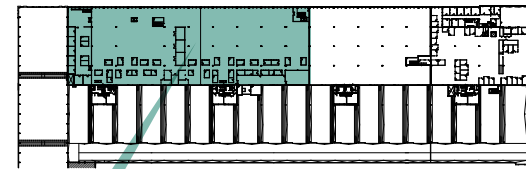


CONNECTED LARGE SUITE SOLUTIONS.

Suites 2801 + 1201 + 1300

173,564 RSF available

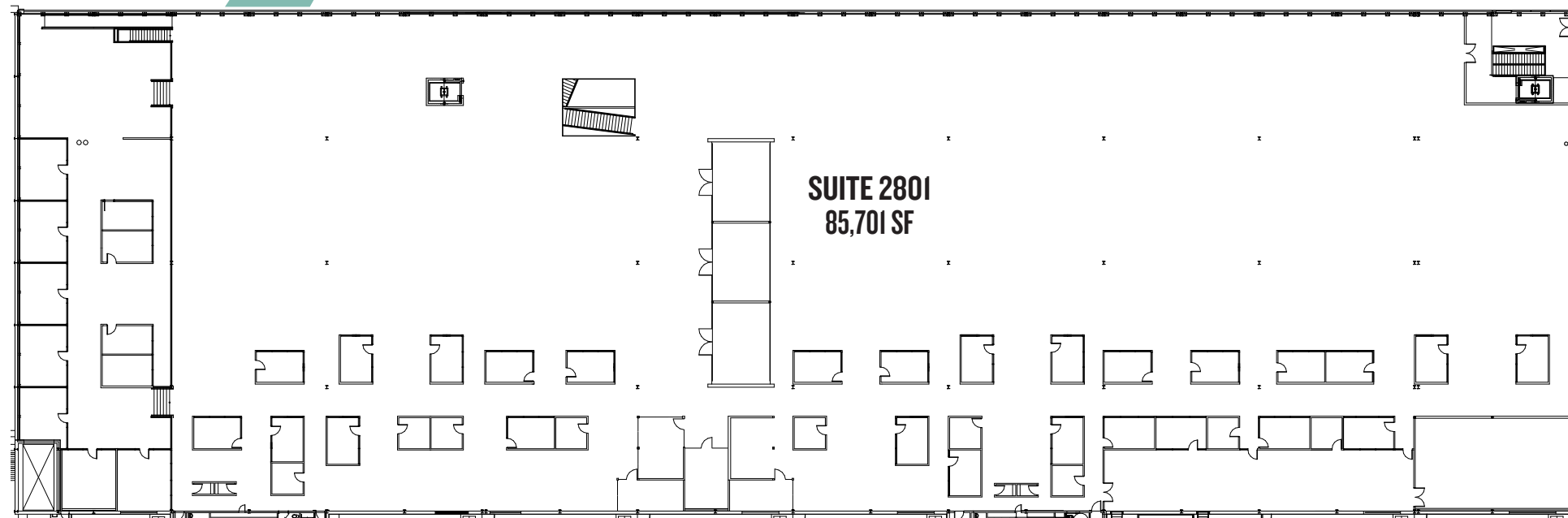
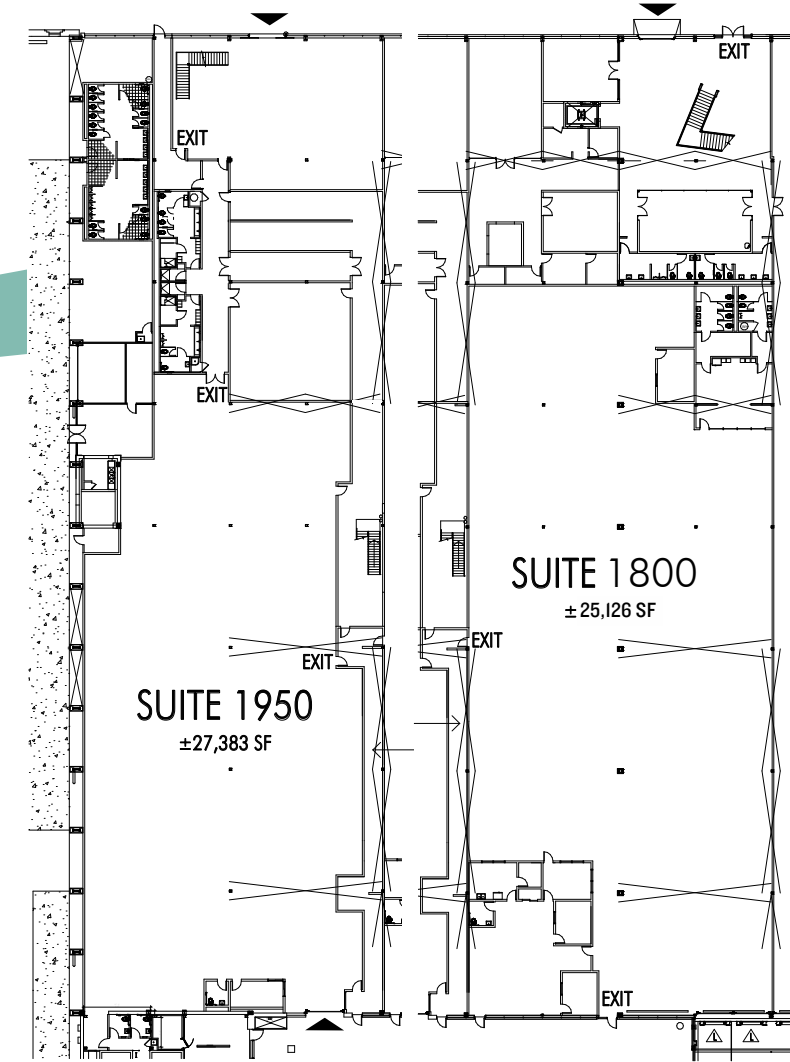
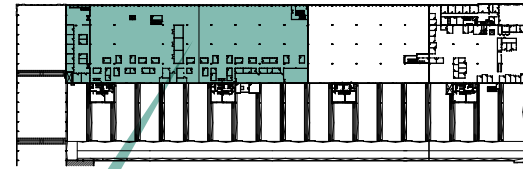
PLUG & PLAY WITH EXISTING FF&E INCLUDED



CONNECTED LARGE SUITE SOLUTIONS.

Suites 2801 + 1950 + 1800

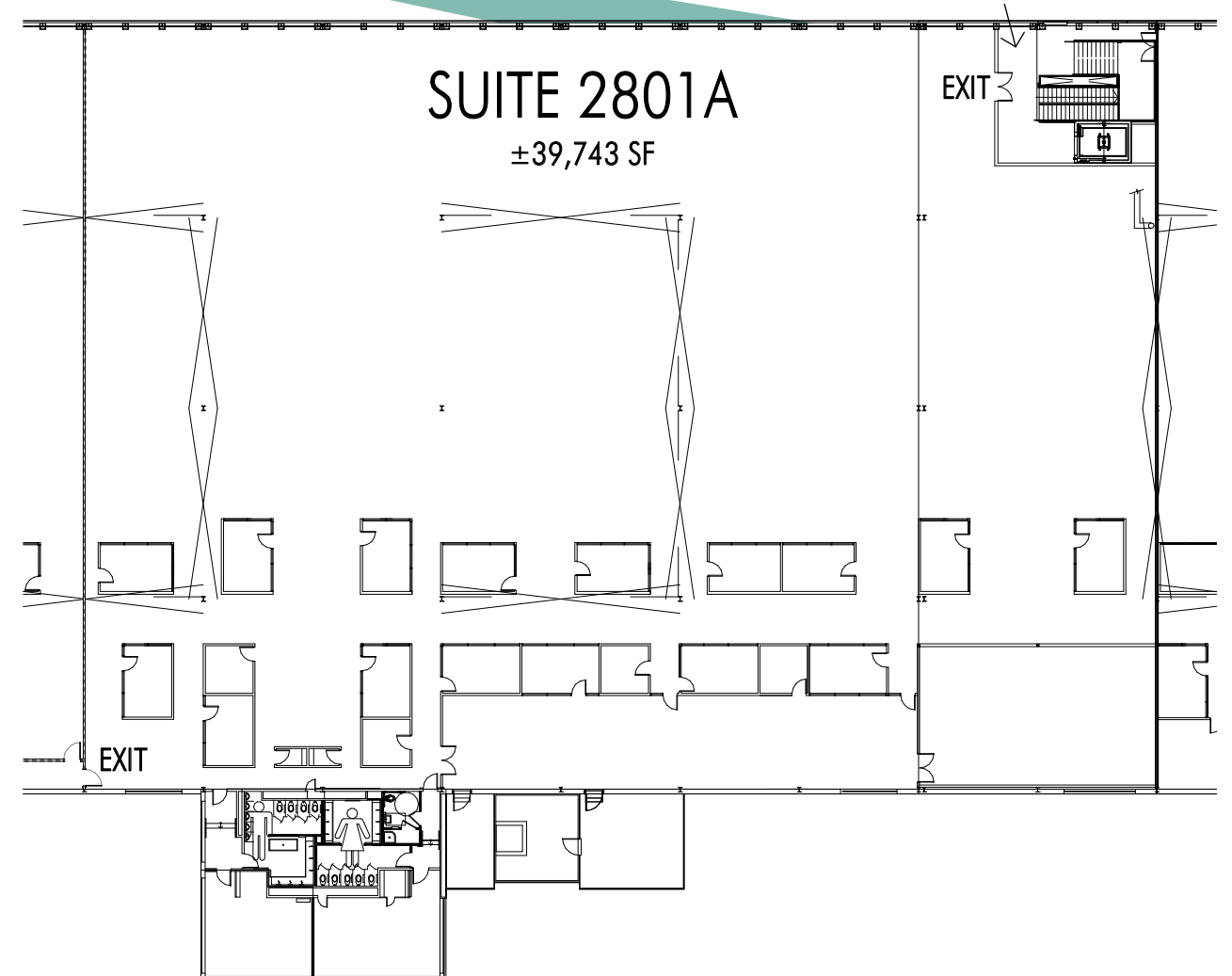
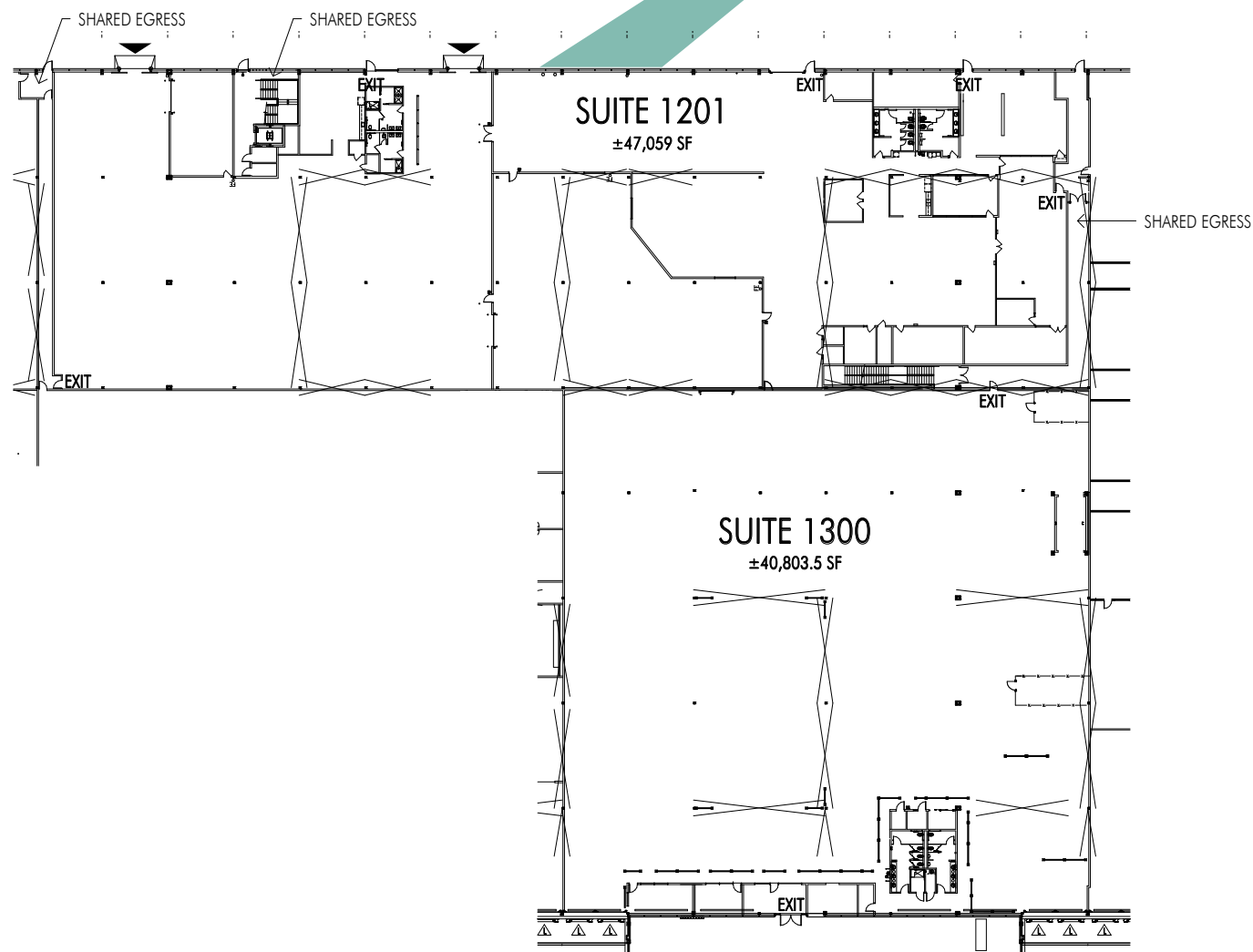
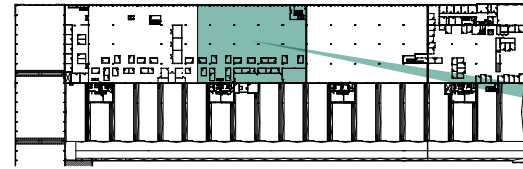
138,210 RSF available



CONNECTED LARGE SUITE SOLUTIONS.

Suites 2801A + 1201 + 1300

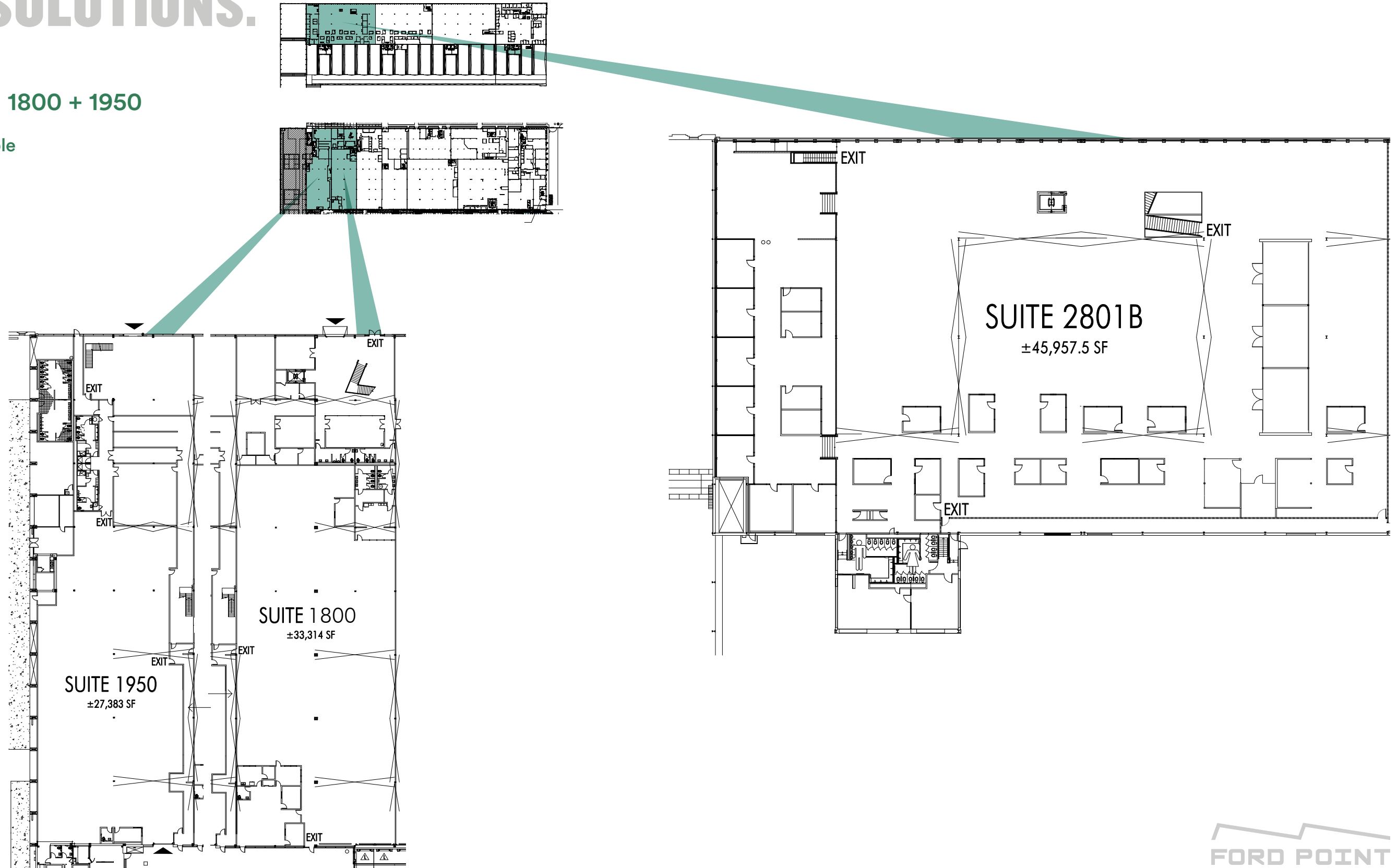
127,606 RSF available



CONNECTED LARGE SUITE SOLUTIONS.

Suites 2801B + 1800 + 1950

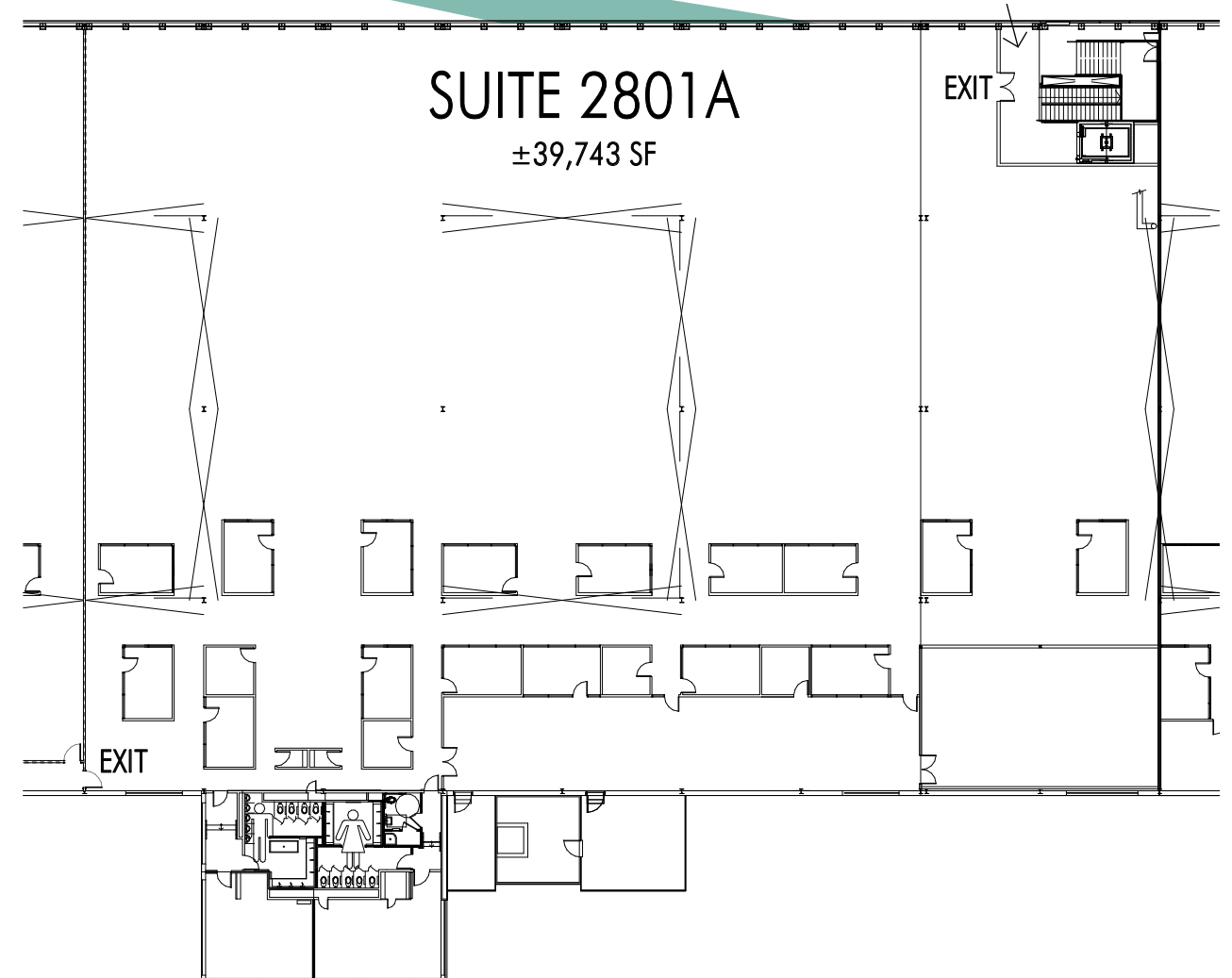
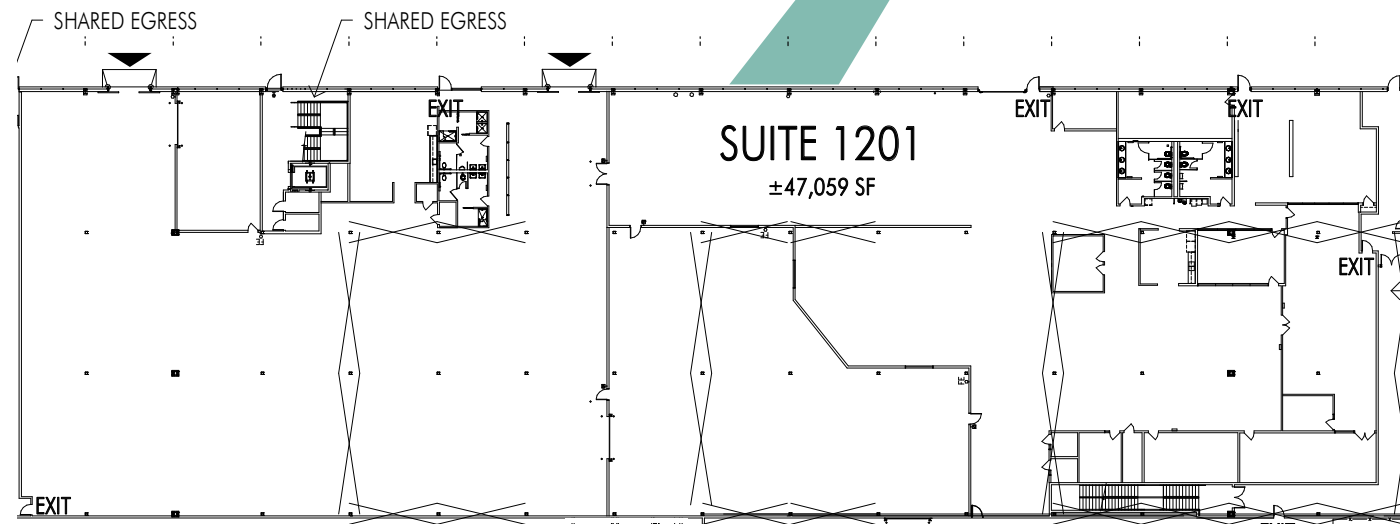
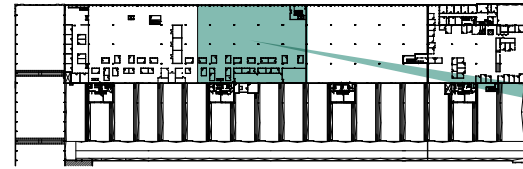
106,655 RSF available



CONNECTED LARGE SUITE SOLUTIONS.

Suites 2801A + 1201

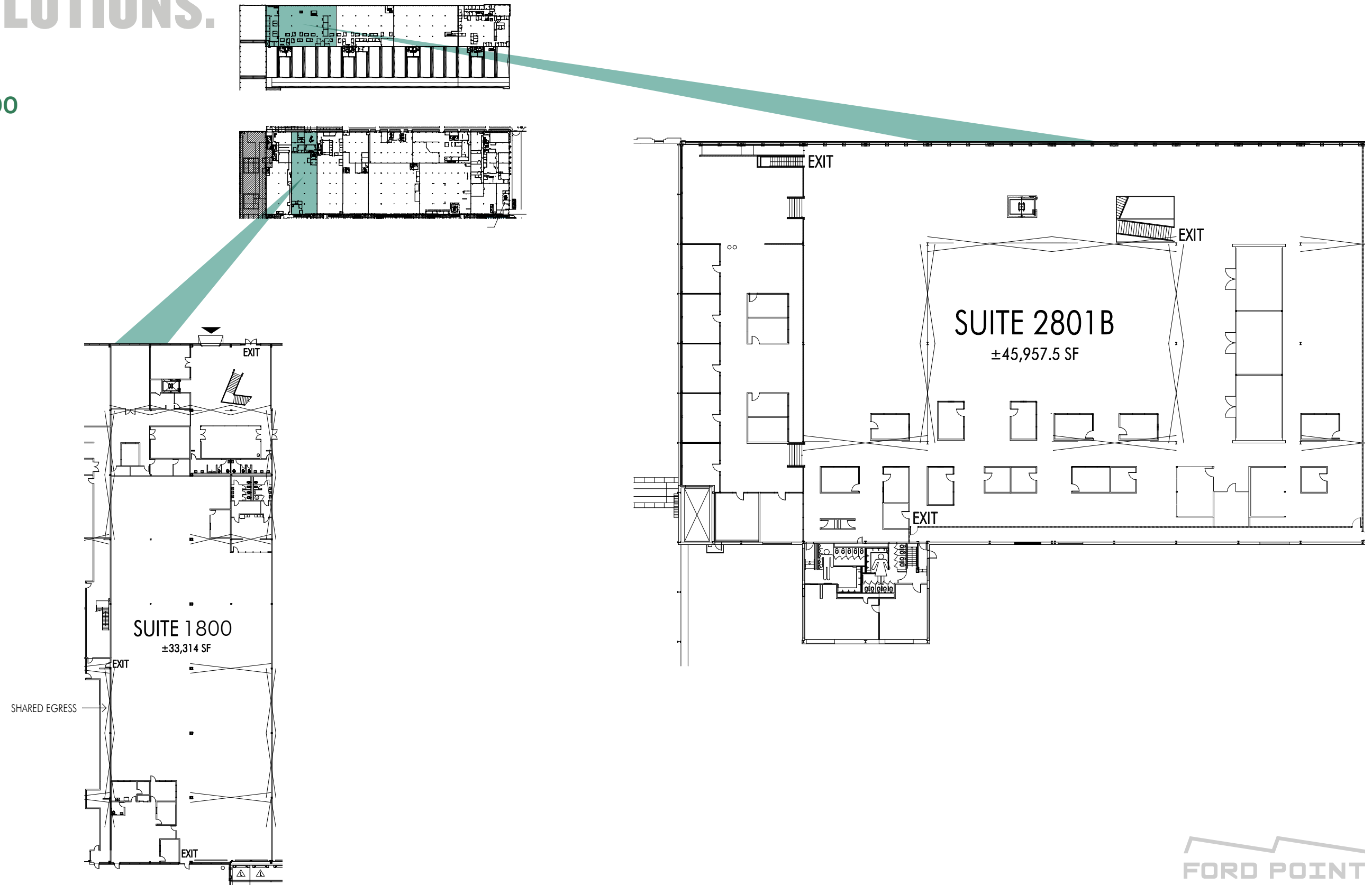
86,802 RSF available



CONNECTED LARGE SUITE SOLUTIONS.

Suites 2801B + 1800

79,272 RSF available



SPACE FOR CREATIVITY.

Our tenants leverage intelligent building features to promote collaborative workplaces, inspired teams, and the well-being of individuals. Ford Point offers the luxury of space for creativity.

- > MIXED USE ZONING FOR MANUFACTURING, DISTRIBUTION, R+D, RETAIL AND OFFICE
- > EXPANSIVE FLOOR PLATES AND UNOBSTRUCTED INTERIORS FOR MAXIMUM FLEXIBILITY AND PRODUCTIVITY
- > 16-18' CEILING HEIGHTS FOR UNINHIBITED SPACES

- > LARGE WINDOWS AND SKYLIGHTS FOR SUPERIOR NATURAL LIGHT AND AIR QUALITY
- > WATERFRONT VIEWS OF SAN FRANCISCO AND THE BAY

A COMMUNITY OF DOERS.

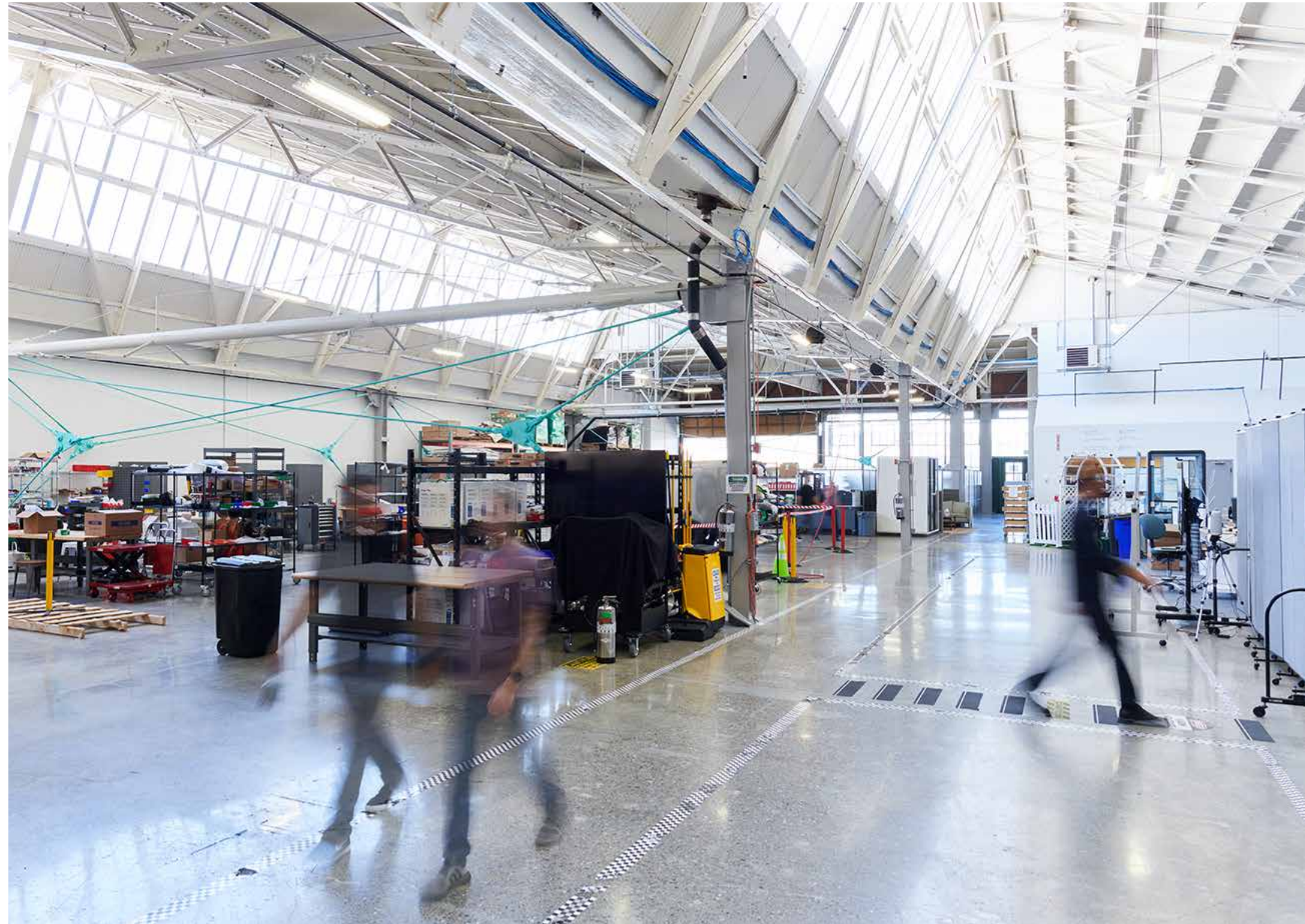
Ford Point is home to visionary companies moving us toward a more sustainable future. Our tenants represent the innovative spirit at the heart of the Ford Point community.

CALIFORNIA
CLOSETS®

MOUNTAIN
HARD
WEAR 

monvera
Glass Decoration

CRANEWAY
PAVILION





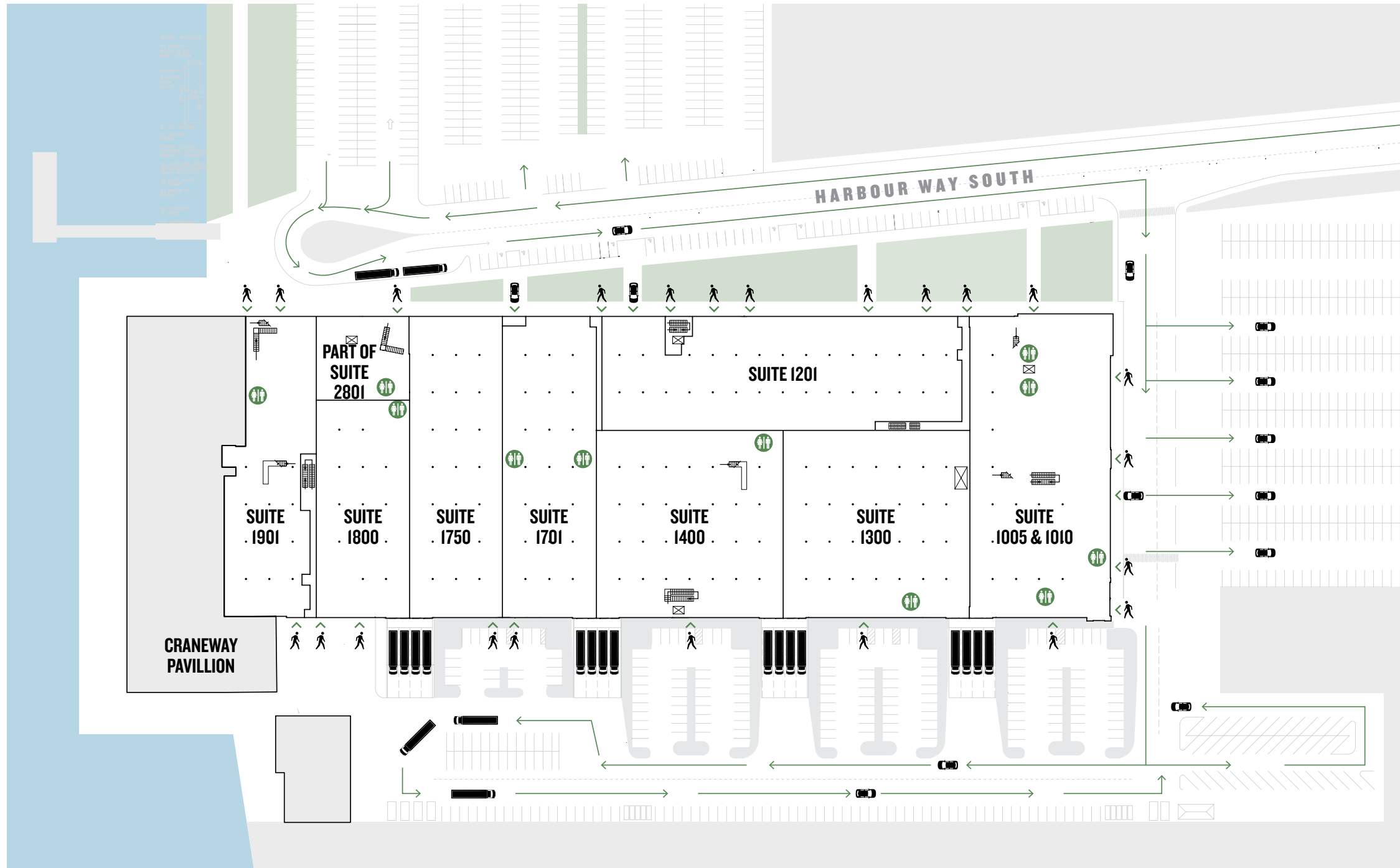
Ford Point offers an ecosystem of practices to arrest climate change.

- > ROOFTOP SOLAR PANELS
- > RESTORED USING GREEN BUILDING PRACTICES
- > RECYCLING AND WASTE DIVERSION PROGRAM
- > HIGH-EFFICIENCY LED LIGHTING
- > ELECTRIC CAR-CHARGING STATIONS
- > EASY ACCESS TO PUBLIC TRANSPORTATION



A MODEL OF SUSTAINABILITY.





Exclusive access to each suite.

Available suite includes loading docks.

- > INDIVIDUAL TENANT ENTRANCES
- > 3 ELEVATORS
- > 24/7 ACCESS
- > 24-HOUR MANNED SECURITY

- > 961 PARKING SPACES
- > 17 CHARGING STATIONS
- > 14 DOCK HIGH DOORS
- > 8 GRADE LEVEL DOORS

EFFICIENT ACCESS.



FUNCTIONAL NOSTALGIC DESIGN.



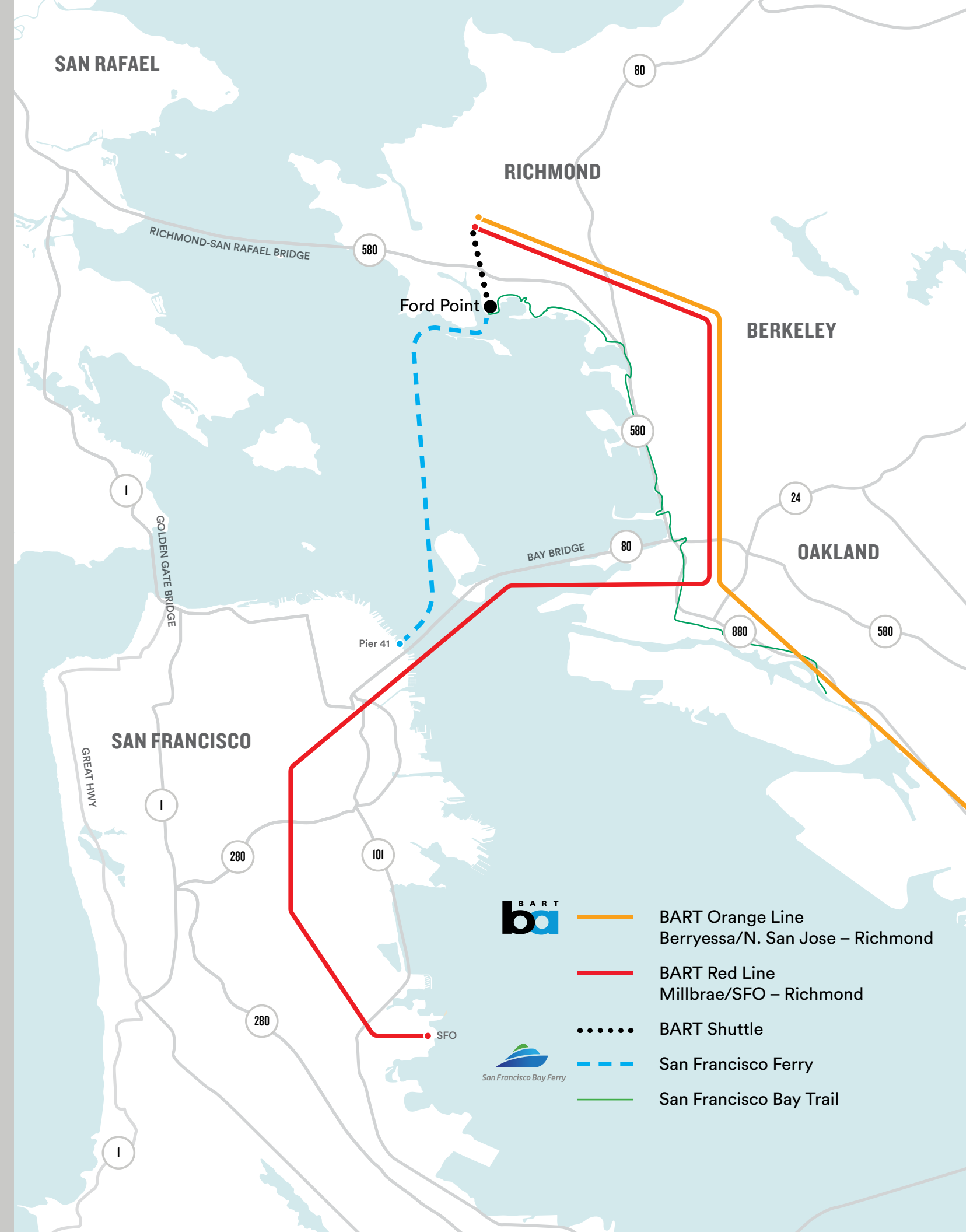
Architectural details infuse the Ford Point property with unique character—a blend of industrial efficiency and functional design, an inspirational interplay of legacy and vision celebrating what brought us here and where we'll go.



CLOSER THAN YOU THINK.

- > 10 MINUTES FROM BERKELEY
- > 15 MINUTES FROM EMERYVILLE
- > 20 MINUTES FROM OAKLAND OR SAN RAFAEL
- > 25 MINUTES FROM MILL VALLEY OR DOWNTOWN SAN FRANCISCO
- > 35-MINUTE FERRY RIDE FROM SAN FRANCISCO

Note: travel times are non rush hour



MORE THAN YOU EXPECT.

- > ON-SITE RESTAURANTS AND ENTERTAINMENT VENUE
- > NEXT TO RICHMOND FERRY TERMINAL
- > ACCESS TO SAN FRANCISCO BAY TRAIL
- > NEARBY PARKS, RESTAURANTS, AND MUSEUMS



POINTS OF INTEREST

- 1** Craneway Pavilion
- 2** Golden State Model Railroad Museum
- 3** Rosie the Riveter Park and Visitor Center

RESTAURANTS

- 4** Anaviv's Table
- 5** Armistice Brewing
- 6** The Artisan Kitchen
- 7** Assemble Restaurant
Tommy's BBQ
- 8** Bubbaloo
- 9** East Brother Beer
- 10** The Far West Cider Co
- 11** Golden Gate Bistro
- 12** La Lupita Mexican Eatery
- 13** Lara's Fine Dining
- 14** Tacos Las Palmas
- 15** Starbucks

GET IN TOUCH.

LEASING TEAM

Ted J. Anderson
510 289 0876 cell
ted.anderson@cushwake.com

Ryan Hattersley
925 286 2536 cell
ryan.hattersley@cushwake.com

Andrew Schmieder
510 891 5834 office
andrew.schmieder@cushwake.com

OWNERSHIP TEAM

John Clote
212 759 8746
jclote@mcapny.com

Chase Hagen
212 759 8989
ch@mcapny.com



FORD POINT 1414 HARBOUR WAY SOUTH, RICHMOND, CA 94804 FORD-POINT.COM

